

SEPTEMBER 2023



CAMBODIAN ROCK BAND

THE
FIFTH
AVENUE
THEATRE

CT
CONTEMPORARY
THEATRE

SEPTEMBER 29 -
NOVEMBER 5, 2023

encore

encore+®

The future is in your hand.

Encore+ digital programs
are available from these
performing arts organizations:

Greater Seattle Area

A Contemporary Theatre, The 5th Avenue Theatre, Intiman Theatre, Meany Center for the Performing Arts, Seattle Children's Theatre, Seattle Opera, Seattle Rep, Seattle Theatre Group, Seattle Shakespeare Company, Taproot Theatre Company, Village Theatre

San Francisco Bay Area

American Conservatory Theater, Berkeley Rep, Cal Shakes, San Francisco Opera, San Francisco Gay Men's Chorus, San Francisco Symphony



encore

2023/24 | Volume 20, No. 3



To access this program on your phone, scan the
QR code above. Plus, be sure to register to save
your digital program.

PAUL HEPPNER

President & Publisher

BRIANNA HANSEN

Vice President of Sales

SHAUN SWICK

Brand & Creative Manager

CIARA CAYA

Marketing & Communications Manager

GENAY GENEREUX

Accounting & Office Manager

CALEB AGEE

Design & Publications Manager

LIZELLE DIN

Production Designer

JAMES SCHRECK

Account Executive

KALLINS MEDIA SALES

Marilyn Kallins, Bay Area Representative

JACQUI DZIAK

Regional Sales Representative

Encore Media Group

1631 15th Ave W.

Suite 219

Seattle, WA 98119-2796

206.443.0445

info@encoremidiagroup.com

encoremidiagroup.com

Encore—Connecting Arts, Culture and Community.

Encore Media Group acknowledges that we are on the lands of the Duwamish People, and their other Coast Salish relations—past and present. We recognize that these lands are unceded and we support the Duwamish Tribe in their struggle to gain Federal Tribal Recognition. We honor with gratitude the land itself. This acknowledgement does not take the place of authentic relationships with Indigenous communities, which we seek to build. We hope that this step of honoring these lands, and the First People of Seattle who remain their stewards, will help us become better neighbors to the Duwamish Tribe and all the people who have called the Pacific Northwest home since time immemorial.

2023/24 SEASON

1776

August 2 – 6, 2023

DISNEY'S THE LITTLE MERMAID

September 8 – October 8, 2023

CAMBODIAN ROCK BAND

September 29 – November 5, 2023

IRVING BERLIN'S WHITE CHRISTMAS

November 25 – December 27, 2023

SOMETHING'S AFOOT

March 1 – 24, 2024

SPRING AWAKENING

June 7 – 30, 2024

CLUE

July 9 – 21, 2024

2023/24 SEASON

CAMBODIAN ROCK BAND

September 29 – November 5, 2023

NEW WORKS NORTHWEST FESTIVAL

October 27 – 29, 2023

A CHRISTMAS CAROL

November 24 – December 24, 2023

DINA MARTINA

December 4 – 24, 2023

A CASE FOR THE EXISTENCE OF GOD

February 2 – 18, 2024

STEW

March 15 – 31, 2024

THE LEHMAN TRILOGY

April 26 – May 12, 2024

CONTENTS

- 4 Letter from the Artistic Directors
- 7 Cast
- 9 Who's Who
- 16 5th Avenue Theatre Supporters
- 25 Executive Leadership
- 26 ACT Board of Directors
- 28 ACT Staff
- 29 5th Avenue Theatre Board of Directors
- 30 5th Avenue Theatre Staff

THE 5TH AVENUE THEATRE
SEASON SPONSOR



ARTS FUND

THE 5TH AVENUE THEATRE
SEASON RESTAURANT SPONSOR

purple

CAFE AND WINE BAR

ACT SEASON SPONSORS



ARTS FUND

NESHOLM FAMILY
FOUNDATION

SHUBERT
FOUNDATION INC.

TRIAL &
ERROR
PRODUCTIONS

LAND ACKNOWLEDGEMENT

ACT and The 5th Avenue Theatre acknowledge that the land on which this theatre stands on is the ancestral homelands of the **Muckleshoot, Suquamish, Duwamish, Snoqualmie and Tulalip** peoples, along the waterways of the **Salish Sea**. We honor the **29 federally recognized sovereign tribal nations** within the state of Washington.

As we gather and strive to share stories of our world with joy and clarity, **we honor with gratitude the original stewards and storytellers of these lands—past, present and future**. We value the immense and often unrecognized contributions, sacrifices and resilience of

Indigenous people here, and acknowledge the profound multigenerational impact that colonization has adversely had on Native people everywhere, including ongoing disparities, racism and political and social invisibility. **To heal, we need truth and understanding that everyone actively participates in, together.**

This land acknowledgement is one small act in recognizing the importance of continuing to care for the land and our important relationship with the original people of this place we all call home, who are still here. **We are all in relationship to each other.**

LETTER FROM THE ARTISTIC DIRECTORS



BILL BERRY PHOTO BY MARK KITAOKA



JOHN LANGS PHOTO BY TRUMAN BUFFETT

A ROCKIN' COLLABORATION

It is our immense pleasure to welcome you to *Cambodian Rock Band*. The unique and wonderful show you are about to witness is the 11th product of the years-long collaboration between ACT and The 5th Avenue Theatre. Our partnership endeavors to bring novel musical visions to life, creating exciting new classics in the musical theater canon. As such, it is nothing short of an honor to welcome Lauren Yee back to ACT Contemporary Theatre with her modern epic. ACT has been fortunate to have a front row seat to Lauren's artistry, having workshopped and produced other works from the Yee canon, including *King of the Yees*. And The 5th can't wait to introduce it's audience to this prolific contributor to American theater for the first time.

Cambodian Rock Band is truly event theatre at its finest. This stunning production is equal parts rock concert, historical excavation, and familial revelation, told with the brash wit and theatrical daring that is the trademark of this great storyteller, Yee. To see this show bursting at the seams in this incredible dual theater collaboration in this intimate space is a wildly unique experience. It is a story we are especially honored to share with our Seattle Khmer community, and we promise you won't soon forget it.

Supporting new work is at the heart of, and happily shared by ACT Contemporary Theatre and The 5th Avenue Theatre. With our combined resources and creative efforts, we enthusiastically present the magic you are about to witness. We also want to give a special thanks to you, our theatre-goers, for supporting locally produced musical theater in downtown Seattle. Enjoy the show!

Bill Berry
Producing Artistic Director
The 5th Avenue Theatre

John Langs
Artistic Director
ACT Contemporary Theatre

THE 5TH AVENUE THEATRE

Producing Artistic Director
BILL BERRY

Managing Director
KATIE MALTAIS

AND

ACT CONTEMPORARY THEATRE

Artistic Director
JOHN LANGS

Managing Director
ANITA SHAH

In association with
ALLEY THEATRE, BERKELEY REPERTORY THEATRE, and ARENA STAGE

Present the
Signature Theatre Production of

CAMBODIAN ROCK BAND

By **LAUREN YEE**

Featuring songs by **DENGUE FEVER**

Featuring

KELSEY ANGEL BAEHRENS BROOKE ISHIBASHI ABRAHAM KIM TIM LIU
JANE LUI ALEX LYDON JOE NGO VI TRAN PHIL WONG

Scenic Designer
TAKESHI KATA

Costume Designer
LINDA CHO

Lighting Designer
DAVID WEINER

Projection Designer
**LUKE NORBY WITH FIVE
OHM PRODUCTIONS**

Wig Designer
TOM WATSON

Co-Sound Designers
**MIKHAIL FIKSEL &
MEGUMI KATAYAMA**

Associate Director
GRAHAM SCHMIDT

Associate Lighting Designer
DAVID SHOCKET

Associate Sound Designer
**BEN TRUPPIN-
BROWN**

Associate Scenic Designer
ROBIN VEST

Fight Director
ALDO URIBE

Stage Manager
**MERRICK A.B.
WILLIAMS**

Assistant Stage Manager
QUY TON

Production Assistant
MAX ZAMORANO

Khmer Vocal Coach
SOKUNTHARY SVAY

Music Supervisor & Co-Music Director
JANE LUI

Music Supervisor & Co-Music Director
MATT MACNELLY

Director
CHAY YEW

New York Premiere produced by Signature Theatre, New York City
Paige Evans, Artistic Director; Harold Wolpert, Executive Director

CAMBODIAN ROCK BAND was commissioned and first produced by South
Coast Repertory with support from the Time Warner Foundation.

This play is a recipient of the Edgerton Foundation New American Play Award.

Developed with support from The Ground Floor at Berkeley Repertory Theatre, Berkeley, CA.

Produced by special arrangement with Broadway & Beyond Theatricals.

CAMBODIAN ROCK BAND is presented by arrangement with Concord Theatricals on behalf of Samuel French, Inc.
www.concordtheatricals.com

THE 5TH AVENUE THEATRE PRODUCING PARTNER

Marleen and Kenny Alhadeff

THE 5TH AVENUE THEATRE RESTAURANT SPONSORS





SCAN QR CODE!

THE
FIFTH AVENUE
THEATRE

206.625.1900 | 5THAVENUE.ORG

2023/24 SEASON SPONSOR

ARTSFUND



2023/24 RESTAURANT SPONSOR
AND PRODUCTION SPONSOR

purple
CAFÉ AND WINE BAR

CAST

(in alphabetical order by last name)

| | |
|----------------------|------------------|
| Neary/Sothea | BROOKE ISHIBASHI |
| Rom/Journalist | ABRAHAM KIM |
| Ted/Cadre/Leng | TIM LIU |
| Pou/S-21 Guard | JANE LUI |
| Chum | JOE NGO |
| Duch | PHIL WONG |

UNDERSTUDIES

Understudies never substitute for listed players unless a specific announcement for their appearance is made at the time of the performance.

Neary/Sothea/Pou/S-21 Guard—KELSEY ANGEL BAEHRENS

Ted/Cadre/Leng/Rom/Journalist—ALEX LYDON

Duch/Chum—VI TRAN

STAGE MANAGEMENT

Stage Manager

MERRICK A.B. WILLIAMS

Assistant Stage Manager

QUY TON



The actors and stage managers are members of Actors Equity Association, the Union of Professional Actors and Stage Managers in the United States.

FOR THIS PRODUCTION

| | |
|-----------------------------------|--------------------------------|
| Associate Costume Designer | HERIN KAPUTKIN |
| Associate Lighting Designer | DAVID SHOCKET |
| Assistant Lighting Designer | CASEY PRICE |
| Associate Sound Designer | BEN TRUPPIN-BROWN |
| Production Consultant | CHARLES M. TURNER III |
| Production Assistant | MAX ZAMORANO |
| Carpenters | MEGHAN BOYLE, ROBIN LOGERSTADT |
| Electricians | KAITLYN LAWRENZ, DAVE MISNER |
| A1 | VALERIE TUROS |
| Sound Engineer | ROBERT "MAX" LANGLEY |
| Dressers | IMELDA DARANGIANG, K.D. SCHILL |
| Stagehands | ROBIN LOGERSTADT, MARTIN SISK |

MUSICAL CREDITS

“Uku,” “Family Business,” “One Thousand Tears of a Tarantula,” “Cement Slippers,” “Sni Bong,” and “Tooth and Nail” all written by Dengue Fever.

All Dengue Fever songs administered by Ellipsis Music Corp. (ASCAP) and Pentagon Lipservices (BMI) on behalf of CHHOM CHIMNEY • 1 ARMED CRAB PUB
FOOLISH MORTAL PUB • NOON KEY MUSIC • S W O P SONGS
TROLL UNDER THE BRIDGE

Dengue Fever music and information are available from denguefevermusic.com

“The Times They Are A-Changin’”

Written by Bob Dylan

Copyright © 1963, 1964 by Warner Bros. Inc.; renewed 1991, 1992 by Special Rider Music
Used by permission. All rights reserved.

JEAS CYCLO by Yol Aularong;

TODAY I LEARN TO DRINK, OLD POT STILL COOKS TASTY

RICE, I AM SIXTEEN by Ros Serey Sothea; and

CHAMPA BATTAMBANG by Sinn Sisamouth

All used by arrangement with Minky Records, Inc.

Additional Arrangements by Matthew MacNelly and Jane Lui.

THE
FIFTH AVENUE
THEATRE

The Sheri and Les
Billler Family Foundation

RISING STAR PROJECT

SOMETHING'S AFOOT

APPLICATIONS NOW OPEN!

The Rising Star Project is a professional mentorship program giving Washington State Students, ages 14-19, the opportunity to produce the student version of one of our main stage productions. Student participants will work in every aspect of the theatrical process supporting performance, technical, creative, and administrative teams, all while working alongside industry professionals.

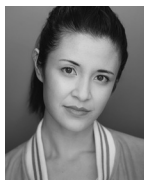


Application Deadline is
October 15 for select positions.

APPLY TODAY!



WHO'S WHO



KELSEY ANGEL BAEHTRENS

(u/s Neary, Sothea, Pou, S21 Guard) is honored to join the *Cambodian Rock Band* family. Fave regional creds: *Cambodian Rock Band* (HI); *Lizzie, the Musical* (Playhouse Square, OH); *Wild Swimming* (HI); *Henry IV*, part 1 (HI Shakes Fest). Tour: *The Magic School Bus: Lost in the Solar System* (Theaterworks USA). Directing creds: Kate Hamill's *Pride & Prejudice* at KOA Theater, HI, associate to Erin Ortman on *Jeannette*, a new musical about the right to vote, associate to Jess McLeod on the NYCLU's "Sing Out For Freedom." Education: Baldwin Wallace University, Mid-Pacific School of the Arts. Mahalo nui loa to everyone who said yes, to the ohana, pamilya, and bong. IG: @kelsey-angelb. kelseyangelbaehtrens.com.



BROOKE ISHIBASHI she/her

(Neary, Sothea) recently appeared as Florinda in the celebrated revival of *Into the Woods* (Broadway, City Center Encores, National Tour). After originating and developing the roles of Neary

and Sothea (South Coast Repertory, Oregon Shakespeare Festival, La Jolla Playhouse, Arena Stage), Brooke is proud to be returning to her bandmates, The Cyclos. She is a former Actors' Equity Association national councilor, Fair Wage Onstage core member, NYCLU ambassador, and Be An #ArtsHero/Arts Workers United cofounder. Arts & culture contributes \$919 billion+ to the U.S. economy, employing 5.2 million+ arts workers. There is no American economic recovery without a robust arts & culture recovery. Our fates are intrinsically tied together. BeAnArtsHero.com



ABRAHAM KIM (Rom,

Journalist) Regional: Originated the role of Rom in *Cambodian Rock Band* (Signature Theatre Company, Pacific Playwrights Festival, South Coast Repertory, Oregon Shakespeare

Festival, La Jolla Playhouse); Son in *LA Riots* (Cafe-Club Fais Do Do). Music: National and International tours with Run River North, DANakaDAN and Magnetic North & Taiyo Na. Drummer on Magnetic North & Taiyo Na's album, *Home: Word*. Music band affiliations: IXS, Monroe St., The Blazing Rays of the Sun, Former Faces, Fyke, Ruth + the Library, Priska, Surrija. Music Producer: Priska (*State Change*),

SGLA (*Be Thou My Vision*). TV/Film: *Good Sessions* (CBS pilot). *Jasyn's Theme* (YouTube). Education: Craig Kupka, Daniel Yoo, Angelica Thompson. Instagram: @0abrahamkim0.



TIM LIU (Ted, Cadre, Leng)

was born and raised in NJ. He most recently performed Off-Broadway in the world premiere of *Good Enemy* directed by Chay Yew for Audible Theatre. Additional theatre credits include

Off-Broadway performances with the Pearl Theatre Company (*A Midsummer Night's Dream*, dir. Eric Tucker), Pan Asian Repertory Theatre, HERE Arts Center, and other NYC Theaters. Regionally he has worked with Hudson Valley Shakespeare Festival, B Street Theatre, Capital Repertory Theatre, The Shakespeare Theatre of NJ, and Centenary Stage Company. Recent TV and Film credits include: *Pam and Tommy* (HULU), *The Endgame* (NBC), *New Amsterdam* (NBC), *Girls on the Bus* (HBO), *A Father's Son* (w/ Ronny Chieng and Tzi Ma), *Knock at the Cabin* (M Night Shyamalan). Special thanks to RG.



JANE LUI (Music Supervisor & Co-Music Director/Pou, S21

Guard) Singer, songwriter, keyboardist, percussionist. Recent credits include "Opera Evelyn" vocal contributions to the soundtrack of *Everything Everywhere All At Once*

(A24), Arranger/Pou in *Cambodian Rock Band* (Off-Broadway Signature Theatre, La Jolla Playhouse, Oregon Shakespeare Festival, South Coast Repertory). Huang in *Vietgone* (East West Players), Original compositions in *All's Well That Ends Well* (OSF), Composer and Music Director in *Secret In The Wings* (Coeurage Theatre Co). Her electro project, SURRIJA, departs from her past work, exploring glitch and warm electronic design. The album earned a nomination for Best Pop Album at San Diego Music Awards 2021. Her music video "Southern Winds" earned Best Music Video at Dublin Web Fest 2017. She has worked with Matt Chamberlain, Son Lux, Felicia Day, CDZA, and toured internationally. @surrija // Surrija.com.



ALEX LYDON (*u/s Ted, Cadre, Leng, Rom, Journalist*) is thrilled to be joining The Cyclos for their national tour! Previous credits include *As You Like It* (Quest Players), *Such Things As Vampires* (People's Light), *It Can't*

Happen Here (Berkeley Rep), *Sisters Matsumoto* (CenterREP), and the Ground Floor workshop of *Cambodian Rock Band*. Many thanks to Lauren Yee, Chay Yew, and the rest of the Cyclos.



JOE NGO (*Chum*) is an Obie Award-winning actor, writer, and musician who most notably originated and developed the role of Chum in Lauren Yee's *Cambodian Rock Band* (Directed by Chay Yew, Music by Dengue

Fever), with productions at South Coast Repertory, La Jolla Playhouse, Oregon Shakespeare Festival, Off-Broadway at the Signature Theatre in NYC; and was elated to make his debut at the Alley Theatre. Regional: *Mlima's Tale* (Repertory Theatre of St. Louis), *White Snake* (Center Stage/Baltimore), *King of the Yees* (ACT/Seattle, Center Stage/Baltimore), *Vietgone* (Studio Theatre, DC) TV: *Crashing* (HBO) V/O: *Funan* (gKids) Education: MFA (UW Seattle) Joe-Ngo.com.



VI TRAN (*u/s Chum, Duch*) Born in the shadow of Sai Gon, Vietnam and raised in the cattle country of southwestern Kansas, Vi Tran is equal parts sea salt and wheat fields. Creator of *The Butcher's Son*, an autobio-

graphical refugee folk musical about his family's escape from Vietnam, their capture by the Khmer Rouge, and their resettlement in the meatpacking country of America. *The Butcher's Son* was nominated for 8 awards at the 2018 Chicago Musical Theatre Festival and winner of Most Promising Musical and Best Leading Performer (Tran). Watch and listen at [YouTube.com/vitranmusic](https://www.youtube.com/vitranmusic). Credits: *Vietgone* (Unicorn Theatre, American Stage); *Miss Saigon* (Paramount, Western Playhouse); *M Butterfly* (Metropolitan Ensemble Theatre); *Bloody Bloody Andrew Jackson* (Unicorn); *Lucy and Charlie's Honeymoon* (Our Perspective/Steppenwolf/Lookout); *Take Me Out* (Unicorn, Playhouse on the Square); *Molière's The Pests* (Kansas City Actors Theatre); *King Henry V* (Heart of America Shakespeare Festival).



PHIL WONG he/him (*Duch*) is a theatre artist from Oakland, CA. He recently performed in Oregon Shakespeare Festival's 2022 Season as Louis in *Revenge Song* and Stephano (*u/s*) in *The Tempest* and is excited to be

continuing his theatrical adventures in the Pacific Northwest! Phil has been a part of the San Francisco Bay Area Theater Community since he was very young and his work there includes credits with American Conservatory Theater, California Shakespeare Theater, Berkeley Rep, TheatreWorks Silicon Valley, The San Francisco Shakespeare Festival, ZSpace & Word for Word, and Shotgun Players. As a rapper, musician, and improviser, Phil has been a guest artist with the Tony Award-winning National Tour of *Freestyle Love Supreme* and is a member of the first Bay Area #BARS Cohort. He also co-founded Bay Area Theatre Cypher, a collective of hip-hop theatre artists who channel the cypher for empathetic and revolutionary storytelling. @phillywongsteak @bayareatheatreacypher

LAUREN YEE (*Playwright*) *Cambodian Rock Band* premiered at South Coast Repertory, with subsequent productions at Oregon Shakespeare Festival, La Jolla Playhouse, City Theatre, Merrimack Rep, Signature Theatre, Victory Gardens, and Jungle Theatre/Theater Mu. Her play *The Great Leap* has been produced at the Denver Center, Steppenwolf, Seattle Rep, Atlantic Theatre, the Guthrie Theatre, American Conservatory Theatre, Arts Club, InterAct Theatre, Portland Center Stage, and Asolo Rep. Honors include the Doris Duke Artists Award, Whiting Award, Steinberg/ATCA Award, American Academy of Arts and Letters Literature Award, Horton Foote Prize, Kesselring Prize, Primus Prize, a Hodder Fellowship at Princeton, and the #1 and #2 plays on the 2017 Kilroys List. She's a Residency 5 playwright at Signature Theatre, New Dramatists member, Ma-Yi Writers' Lab member, and Playwrights Realm alumni playwright. Current commissions include Arena Stage/Second Stage, Geffen Playhouse, South Coast Repertory. TV credits: *Pachinko* (Apple), *Soundtrack* (Netflix), *Interior Chinatown* (Hulu), *Billions* (Showtime), *The Sterling Affairs* (FX). She is currently developing pilots for Netflix and Apple. BA: Yale. MFA: UCSD. [laurenyee.com](https://www.laurenyee.com).

CHAY YEW (*Director*) His New York credits include the Public Theater, Playwrights Horizon, New York Theatre Workshop, Signature Theatre, Playwrights Realm, Audible Theatre, Rattlestick, Ensemble Studio Theatre, National Asian American Theatre, and Ma Yi. Regionally, he directed for the Humana Festival, Goodman

Christmas Carol

acttheatre.org



November 24 -
December 24



The Dina Martina Christmas Show

musical director Chris Jeffries

acttheatre.org



December 8 thru 24



"Funny"

Theatre, Kennedy Center, American Conservatory Theatre, Berkeley Rep, Hartford Stage, La Jolla Playhouse, South Coast Repertory, Huntington Theatre, Oregon Shakespeare Festival, Seattle Rep, Woolly Mammoth, Center Theatre Group, Long Wharf, Alley Theatre, Hartford Stage, Denver Theatre Center, Portland Center Stage, Round House Theatre, Singapore Repertory Theatre, amongst others. His opera credits include the world premieres of Osvaldo Golijov's and David Henry Hwang's *Ainadamar* (co-production with Tanglewood Music Center, Lincoln Center for the Performing Arts and Los Angeles Philharmonic) and Rob Zuidam's *Rage D'Amors* (Tanglewood). He is a recipient of the OBIE Award for Direction. From 2011 to 2020, he was the Artistic Director of Victory Gardens Theatre in Chicago. chayyew.com.

MATT MACNELLY (*Music Supervisor & Co-Music Director*) is a musician and actor living in Los Angeles. He co-arranged *Cambodian Rock Band* and has worked as Music Supervisor on many previous productions, including Signature Theater (NYC), the Oregon Shakespeare Festival, South Coast Repertory, and Victory Gardens in Chicago, among others. He's been playing guitar and singing for over 20 years. Matt has a BA in Theater and Performance Studies from Georgetown University, and an MFA in Acting from the University of California, San Diego.

TAKESHI KATA (*Scenic Design*) Alley Theatre: *Quixote Nuevo*, *Grounded*, *A Few Good Men*, *Other Desert Cities*, *Red*, *The Farnsworth Invention*, *Subject to Fits*, and *Orson's Shadow*. Broadway: *Clyde's*, *Derren Brown: Secret*. Off-Broadway: *Office Hour* (Public); *Man from Nebraska* (Second Stage); *The Great Leap*, *Through a Glass Darkly*, *The Intelligent Design of Jenny Chow* (Atlantic); *Until the Flood* (Rattlestick). Regional: American Players Theatre, Berkeley Rep, Central City Opera, Dallas Theater Center, Denver Theatre for the Performing Arts, Ford's Theatre, Geffen Playhouse, Goodman, Hartford Stage, Huntington Theater, La Jolla Playhouse, Long Wharf, Mark Taper Forum, Nashville Opera, Old Globe, Portland Center Stage, Steppenwolf, Williamstown and Yale Rep. Kata has been the recipient of Michael Merrit, Drama Desk, Obie and Jeff Awards and has been nominated for Ovation, San Francisco Critics Circle, Elliot Norton, TBA and Barrymore Awards. Kata is an Associate Professor at University of Southern California, School of Dramatic Arts.

LINDA CHO (*Costume Design*) Broadway: *POTUS*, *Summer 1976*, *Take Me Out*, *Grand Horizons*, *Anastasia* (Tony®, Drama Desk, Outer Critics Award nominations), *The Great Society*, *A Gentleman's Guide...* (Tony® and Henry Hewes Awards), *Lifespan of a Fact*,

Velocity of Autumn. Selected credits: *Samson and Delilah*, MET Opera, Michelle Dorrance at ABT City Center, Advisory Committee of the American Theatre Wing. MFA: Yale School of Drama. lindacho.com.

DAVID WEINER (*Lighting Design*) is thrilled to continue bringing Chay Yew's production of Lauren Yee's *Cambodian Rock Band* to audiences since its world premiere at South Coast Repertory in 2018. The Alley: *Cleo*, *Leading Ladies*. Broadway: *The Great Society*, *The Price*, *Misery*, *Romeo and Juliet*, *Dead Accounts*, *Grace*, *Godspell*, *The Normal Heart* (Tony – Best Revival, Play), *Reasons to Be Pretty*, *Butley*, *The Real Thing* (Tony – Best Revival, Play), *Dinner at Eight*, *Betrayal*. Off-Broadway: The Public Theater, Manhattan Theatre Club, Second Stage Theatre, Playwrights Horizons, Manhattan Class Company, New York Theatre Workshop, Theatre for a New Audience, Vineyard Theatre, Atlantic Theater Company. Regional: Oregon Shakespeare Festival, Steppenwolf, Goodman, CTG, La Jolla Playhouse, McCarter, Huntington, American Repertory Theater, Williamstown. Theme Park: *Frozen* at Hyperion Theater, Disney California Adventure Park. Architecture: numerous projects including NYC Michelin Star Award Winning restaurants Al Coro, Saga, Crown Shy, and Cote. DavidWeinerDesign.com.

MIKHAIL FIKSEL he/him (*Co-Sound Design*) is a Tony Award-winning designer, composer, audio producer, and DJ working in theatre, dance, film and audio-forward media. Besides numerous productions of *Cambodian Rock Band*, other projects include collaborations with Playwrights Horizons, The Public, Goodman Theatre, Steppenwolf, Chicago Shakespeare, La Jolla Playhouse, Oregon Shakespeare Festival, Victory Gardens, Albany Park Theatre Project, Audible Originals, and Make Believe Association (where he serves as the Director of Audio Production and with whom he just released a new audio drama series "Lake Song" featured at Tribeca Audio Premieres). Film credits include original scores for *Glitch*, *The Wise Kids*, and *In Memoriam*. Other awards include three Lucille Lortel Awards, multiple Jeff Awards, 2020 Obie Award for Sound Design. Fiksel is on the faculty at Columbia College Chicago and is a proud member of USA and TSDCA.

MEGUMI KATAYAMA (*Co-Sound Design*) is a NY-based sound designer. Her design credits include New York: *The Nosebleed* (Lincoln Center Theatre LCT3), *The Life* (City Center Encores!), for *colored girls who have considered suicide/when the rainbow is enuf* (The Public), *Our Brother's Son* (Signature), *Generation Rise* (Ping Chong and Company/ New Victory), *The Gett* (Rattlestick). Regional:

72 Miles to Go... (Alley Theatre), *My Body No Choice* (Arena Stage), *Dinner and Cake*, *The Skin of Our Teeth*, *An Almost Holy Picture* (Everyman Theatre), *Sister Act* (Geva Theatre Center), *Pride and Prejudice* (Long Wharf), *El Huracán* (Yale Rep/The Sol Project), *Pass Over* (Studio Theatre), *Rooted* (Cincinnati Playhouse in the Park), *Mary's Wedding* (Kansas City Rep), Two River Theater, Virginia Stage Company, Dorset Theatre Festival, Chautauqua Theater Company, Skylight Music Theatre, and more. MFA: Yale School of Drama. Member of IATSE USA 829.

TOM WATSON (*Wig Design*) Originally from N. Ireland, headed the wig/makeup department at the Metropolitan Opera for 17 years. He has designed more than 100 Broadway productions: *Wicked*, *Rock of Ages*, *The King & I*, *Fiddler on the Roof*, *Oslo*, *Falsettos*, *The Little Foxes*, *Junk*, *My Fair Lady*, *King Kong*, *All My Sons*, *Great Society*, and *Plaza Suite*.

FIVE OHM PRODUCTIONS (*Projection Design*) is a New York City-based production company specializing in theatrical and experiential audio and video applications. Five OHM has employed hundreds of design and technical artists and has an ever expanding roster of technicians and venues in New York City and beyond. Notable design credits include Video Design with Tal Yarden for the Apollos original production of Ta- Nehisi Coates' *Between the World and Me*, performed at the Apollo and Kennedy Center, and the eventual subject of an HBO documentary of the same name. Other notable credits include: New York Times Dealbook Conference with Jazz at Lincoln Center, Original Animations and Design for *Fahrenheit 451* at the Hippodrome, and *Cambodian Rock Band* Video Design with Luke Norby at Signature Theatre. Special thanks to Luke and Scott on the Seattle team.

GRAHAM SCHMIDT (*Associate Director*) is a Brooklyn-based theater director. Graham has directed and developed work at the Orchard Project, Ensemble Studio Theatre, the Lark Theatre, the Wild Project, the National Winter Playwrights' Retreat, Salvage Vanguard Theater, Aye Defy, the Blue Theater, the Off Center, NYU Grad Acting, Fordham University, the American Academy of Dramatic Arts, and UT-Austin. Graham teaches acting in BFA programs at Pace University and Brooklyn College.

CHARLES M. TURNER III (*Production Consultant*) Broadway: *Death of a Salesman*, *The Skin of Our Teeth*, *The Parisian Woman*, *Hand to God*, *The Heidi Chronicles*, *The Performers*, *Golda's Balcony*, and *Metamorphoses*. Other credits include: 25 years of Off-Broadway, Regional, and International work.

Logical + Imaginative Intense + Verbal Observant + Hands-on

Gifted children exhibit these characteristics every day. Even so, many gifted students, especially children of color, remain overlooked in class. Not so at **Seattle Country Day School**. We offer our students an environment where they can ask questions, create, and grow intellectually and emotionally. **See if SCDS is right for your child.**



Seattle Country Day School

For gifted children, K-8

Rooted in inquiry. Dedicated to equity.

seattlecountryday.org/admissions

MERRICK A.B. WILLIAMS (*Stage Manager*) Broadway: *The Book of Mormon*, *Frankie and Johnny in the Clair de Lune*. NY City Center: *Call Me Madam* (Encores). Off-Broadway: *Sanctuary City*, *Othello*, *Dreaming Zenzile*, *An Ordinary Muslim* (NYTW); *Good Enemy* (Minetta Lane); *Somebody's Daughter*, *The Layover*, *Invisible Thread*, *The Other Thing* (Second Stage); *Gently Down The Stream*, *Sweat Mobile National*, *Measure for Measure Mobile* (The Public); *Daphne's Dive* (Signature). Regional: *Seder* (Hartford Stage); *10x10 2016* (Barrington Stage); *On the Town* (Boston Pops).

QUY TON (*Assistant Stage Manager*) is ecstatic to reunite with *Cambodian Rock Band* in Seattle. Prior highlights include: *Here Lies Love* at Seattle Repertory Theatre. *The Three Musketeers*, *Where We Belong*, *Cambodian Rock Band*, and *Destiny of Desire* at OSF. Disney's *The Little Mermaid* (2017) at The 5th.

MAX ZAMORANO he/they (*Production Assistant*) is ecstatic to be back at ACT, and thrilled to be a part of this wonderful production! Recent credits include: *King Lear*, *Just Deserts*, *The Tempest* (Santa Cruz Shakespeare), *Lydia and The Troll*, *Metamorphoses*, *Mr. Dickens and His Carol* (Seattle Rep), and *Every Brilliant Thing* (ACT Theatre). Much love to all who make this crazy life possible!

ACTORS' EQUITY ASSOCIATION ("Equity"), founded in 1913, represents more than 51,000 professional Actors and Stage Managers nationwide. Equity seeks to foster the art of live theater as an essential component of society and advances the careers of its members by negotiating wages, improving working conditions, and providing a wide range of benefits, including health and pension plans. Equity is a member of the AFL-CIO and is affiliated with FIA, an international organization of performing arts unions. #EquityWorks

SIGNATURE THEATRE celebrates playwrights and gives them an artistic home. Signature makes an extended commitment to a playwright's body of work, producing several plays by each resident writer and delivering an intimate and immersive journey into the playwright's singular vision. Founded in 1991 by the late James Houghton, the Tony Award®-winning Signature Theatre is now led by Artistic Director Paige Evans and Executive Director Harold Wolpert. Signature fosters a cultural community within our permanent home on West 42nd Street, the Frank Gehry-designed Pershing Square Signature Center, which boasts three theatres and two rehearsal rooms, including The Ford Studio, a flexible space that can be converted into a 99-seat theatre.

ALLEY THEATRE, one of America's leading nonprofit theatres, is a nationally recognized performing arts company led by Artistic Director Rob Melrose and Managing Director Dean R. Gladden. The Alley is committed to developing and producing theatre that is as diverse as the Houston community. The Theatre produces up to 16 plays and nearly 500 performances each season, ranging from the best current work and re-invigorated classic plays to new plays by contemporary writers. Home to a fulltime resident company of actors, the Alley engages theatre artists of every discipline—actors, directors, designers, composers, playwrights—who work on individual productions throughout each season as visiting artists. The Alley is comprised of two state-of-the-art theatres: the 774-seat Hubbard Theatre and the 296-seat Neuhaus Theatre. The Alley reaches over 200,000 people each year through its performance, education, and community engagement programs. Its audience enrichment programs include pre-show and postperformance talks, events, and workshops for audience members of all ages.

BERKELEY REPERTORY THEATRE has grown from a storefront stage to an international leader in innovative theatre. Known for its ambition, relevance, and excellence, as well as its adventurous audience, the nonprofit has provided a welcoming home

for emerging and established artists since 1968. Over 5.5 million people have enjoyed nearly 500 shows at Berkeley Rep, which have gone on to win six Tony Awards, seven Obie Awards, nine Drama Desk Awards, one Grammy Award, one Pulitzer Prize, and many other honors. Berkeley Rep received the Tony Award for Outstanding Regional Theatre in 1997. To formalize, enhance, and expand the processes by which Berkeley Rep makes theatre, The Ground Floor: Berkeley Rep's Center for the Creation and Development of New Work was launched in 2012. The Berkeley Rep School of Theatre engages and educates some 20,000 people a year and helps build the audiences of tomorrow with its nationally recognized teen programs. Berkeley Rep's bustling facilities—which also include the 400-seat Peet's Theatre, the 600-seat Roda Theatre, and a spacious campus in West Berkeley—are helping revitalize a renowned city. Learn more at berkeleyrep.org.

ARENA STAGE at the Mead Center for American Theater, under the leadership of Artistic Director Molly Smith and Executive Producer Edgar Dobie, is a national center dedicated to American voices and artists. Arena Stage produces plays of all that is passionate, profound, deep and dangerous in the American spirit, and presents diverse and ground-breaking work from some of the best artists around the country. Arena Stage is committed to commissioning and developing new plays and impacting the lives of over 10,000 students annually through its work in community engagement. Now in its eighth decade, Arena Stage serves a diverse annual audience of more than 300,000. arenastage.org



The 5th Avenue Theatre and ACT Contemporary Theatre are members of the League of Residential Theatres (LORT), a nationwide association for not-for-profit theaters.



The actors and stage managers employed in this production are members of Actors' Equity Association, the union of professional actors and stage managers in the United States.



The Director and Choreographer are members of the STAGE DIRECTORS AND CHOREOGRAPHERS SOCIETY, a national theatrical labor union.



Backstage employees are represented by the International Alliance of Theatrical Stage Employees (or IATSE) Local #15 and IATSE Local #488. Costume shop and Wardrobe staff are represented by IATSE Local #887. Hair and Makeup staff and scenic painters are represented by IATSE Local #488.



All the musicians playing in the orchestra for this performance are represented by the American Federation of Musicians of the United States and Canada, Local 76-483, AFL-CIO.



The scenic, costume, lighting, and sound designers in LORT theaters are represented by United Scenic Artists local USA-829 of the IATSE.

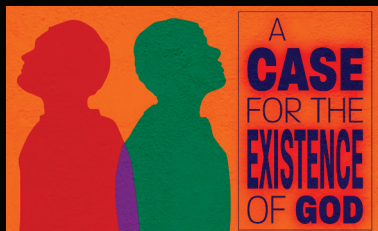


The 5th Avenue Theatre is a member of the National Alliance for Musical Theatre. Founded in 1985, NAMT is a national service organization dedicated exclusively to musical theatre. Members, located throughout 34 states and abroad, are some of the leading producers of musical theatre in the world, and include theatres, presenting organizations, higher education programs, and individual producers.



Welcome to a season of

INTIMATE EPICS



By Samuel D. Hunter
Directed by John Langs
February 2 - 18



By Zora Howard
Directed by Claudine
Mboligikpelani Nako
March 15 - 31



By Stefano Massini,
adapted by Ben Power
Directed by John Langs
April 26 - May 12

**SUBSCRIBE
TODAY AND
SAVE 20%
ON 3 MORE
POWERFUL
THEATRICAL
EXPERIENCES.**

aottheatre.org





NW² NEW WORKS NORTHWEST

5 NEW WORKS. 3 DAYS.
5 SEATTLE PLAYWRIGHTS.

October 27 - 29, 2023

Get tickets now at acttheatre.org



A GARDEN PARTY FOR **THE FIFTH AVENUE** THEATRE

ANNUAL GALA & AUCTION

SAVE THE DATE

MAY

FRIDAY **03** AT 6 PM

2024



MARQUEE SOCIETY

We gratefully acknowledge the following individuals and organizations who have committed \$1 million or more through their lifetime annual and capital gifts to support The 5th's dedication to artistic excellence, our service to children and families, and our development of new musicals.

Marleen and Kenny Alhadeff
ArtsFund
Renée and Carl Behnke
The Sheri and Les Biller Family
Foundation
Christabel Gough
The Estate of Marian Lackovich
The Norcliffe Foundation

Ann Ramsay-Jenkins
Paula and Steve Reynolds
The Herman and Faye Sarkowsky
Charitable Foundation
Seattle Foundation
Bonnie and Jim Towne
1 Anonymous

ANNUAL GIVING

We would like to say thank you to the following donors who provided support at the \$600 level and above as of September 11, 2023. Through their annual and fund-a-need gifts, donors become partners in our commitment to artistic excellence, community engagement, education, and expanding the canon of musical theater. For more information on how you can support The 5th, please contact the Philanthropy office at 206.971.7903.

VISIONARIES

ArtsFund
Renée and Carl Behnke
The Sheri and Les Biller Family
Foundation
Cascade Asset Management Company
Margaret Clapp
Tom and Susan Handley
The Estate of Marilyn Lee Huey
The Norcliffe Foundation
John and Deanna Oppenheimer /
Columbia Hospitality
Ann Ramsay-Jenkins
Steve Reynolds
The Herman and Faye Sarkowsky
Charitable Foundation
Washington State Arts Commission

U.S. Bank
Karla and Gary Waterman
Becca and Bill Wertz

EXECUTIVE PRODUCER'S CIRCLE

Marleen and Kenny Alhadeff
Geoffrey Antos
Lauren and William Bartholomew
Michael Bauer
Howard and Lynn Behar
Marisa Behnke
Steven and Theresa Binger
The Boeing Company
Bobbe and Jon Bridge
Ed and Pam Bridge
Debbie Brown
The Capital Grille+
Debby Carter
Davis Property & Investment+
Brian and Laura DeNault
Elevation Cellars+
Ethan Stowell Restaurants+
Helen Fanucci and Christopher Beall
Freestone Capital Management
Jean Gardner
The Greco Family
Joshua Green Foundation
Matt Griffin and Evelyn Rozner
Marilyn Gustafson
Wanda J. Herndon
Hirayama and McKnight Families
Margaret Holsinger
HomeStreet Bank
Nina Jennings
Lisa Jones
Robert Kakiuchi | Keela Williams
Michele and Nick Keller
SaSa and Ken Kirkpatrick
Kyle Levine and Craig Pepin
Myron and Shirley Lindberg
Loeb Family Charitable Foundation
Debbie Loop
Jim and Elizabeth Lund
Ed Manley
Jolene McCaw Family Foundation
Estate of Robert McQuigg
Rick Meadows and Brent Boylan
Bob and Abby Mellon
Microsoft Philanthropies

Morgan Stanley
Beth Moursund
National Endowment for the Arts
Nancy S. Nordhoff
Larry and Valorie Osterman
John Payes and Cameron Crutcher
Patti Payne
Potelco
Joe and Linnet Roberts
Mary See Foundation
Rob and Jan Sexton
Bob Simpson
Thomas E. and Nita F. Sitterley
John W. Song and Courtney E. Riecan
Cynthia Strum
Helen R. Stusser
Gary and Elizabeth Sundem
Bruce and Peggy Wanta
Wells Fargo
Eileen Glasser Wesley and Mark Wesley
Jacqueline and Daniel Widdis
Allen and Janice Wiesen
Wild Ginger +
Elle Williams
Mary Williams
Rosemary and Ken Willman
Sterling and Melinda Wilson
Michelle and Mike Yurka
1 Anonymous

INVESTORS

Patrick Kennedy and Melissa Ries
M. J. Murdock Charitable Trust
Judy Pigott
Buzz and Beth Porter
Premera Blue Cross
Regence BlueShield
Susie Stoller
Unico Properties+
1 Anonymous

CREATORS

4Culture/King County Lodging Tax
Alaska Airlines
Bank of America
Erin and Greg Coomer
Dawkins Charitable Trust
DCG ONE+
Dennis and Deborah DeYoung
David and Cheryl Hadley
Karen L. Koon
Marie Lamfrom Charitable Foundation
Mary Ann and John* Mangels
Martin Nelson & Co., Inc.
Puget Sound Business Journal+
Seattle Foundation
Jeanne Sheldon and Marvin Parsons
Jean Sheridan
Catherine and David Skinner
Peter and Jane-Ashley Skinner
Kathy Surace-Smith and Brad Smith

DIRECTOR'S CIRCLE

Michael Amend
Keith and Kerry Ash
Banner Bank
Andrew and Shayna Begun
Eric Blom and Min Park
Lindsay Bosch
Catherine Boshaw and Doug Edlund
The Boydston Foundation
Robert R. Braun, Jr.
Grant and Emilie Castle
Jeffrey Christianson
City of Seattle Office of Arts & Culture
Debbie and Jason Clark
Kim and Perry Clarke
Clark Nuber PS +
Janet and Robert Coe
Elise and Thomas Constantine
Marilyn Covey

Barbara Crowe
 Davis Wright Tremaine
 Martha Dawson
 Stephen Dwoskin and Janet Donelson
 Cassie and Alan Finkelstein
 Jeffrey and Eleanor Freeman
 Ken, Angela and Chris Freeman
 Gary J. Fuller and Randy L. Everett
 Christy and Travis Gagnier
 Gerry and Linda Gallagher
 Jennifer and Alan Heuberger
 Mindy and Brady Hill
 Suzanne Hittman
 Hal and Donna Howard
 Tami Hurwitz
 Marlene and William Jenkins
 Brad Jones
 Estate of H. David Kaplan
 Lee Keller
 KPMG
 Laird Norton Company
 The Latimer Family
 Lott Foundation
 Judith Lybecker
 Carmen Mayo
 Peter and Susan McClung
 Alex McMillan Family Foundation
 The Morgan Fund at Seattle Foundation
 Claudia and Bob Nelson
 Gregory and Marta Oberg
 Mary and D. Pat Patterson
 Paul G. Allen Foundation
 Paul and Dina Pigott
 PNC Bank
 Tiia-Mai Redditt
 Tony Repanich and Julie Florida
 Retail Management Solutions
 Matt and Melitta Riley
 Ansel Rognlie and David Steindl
 Lucille Rohrs
 SAFECO Insurance
 Skip Sampelayo
 Jim and Bet Schuler
 Sound Community Bank
 Ed and Kathy Sterner
 Laurie Stewart
 Terri Thomsen
 Bonnie and Jim Towne
 Keith and Katie Traverse
 John and Darlene Wilczynski
 Tom and Jackie Wilkinson
 Bruce and Lisa Wiseman
 Wright Runstad & Company
 5 Anonymous

ARTIST'S CIRCLE

Albert Lee Appliance
 Megan and Chris Anderson
 Rita and Stephen Anderson
 Susan and Heather Anstead
 ArtsFund – Williams/Bauer Fund
 Ash Family Foundation
 Keith and Sheri Bankston
 Don and Carrie Beaty
 Ted and Florence Begun
 Xerxes Beharry and Shannon Quinn
 Rebecca Benaroya
 Theodore and Marci Boe
 Daniel and Janet Bolong
 Richard and Margaret Bossi
 Herbert and Jerri Brod
 Michael and Janelle Brookman
 Alice M. Brown
 Yelena and Tom Button
 Steve and Georgene Camp
 The Casey Family
 Judi Chapman
 Kathleen and Bill Collins
 Patrick and Karen Crumb
 Matthew and Victoria Ellis
 C. Jeanne and Jack Fankhauser
 Richard and Maude Ferry
 Mrs. Dorothy Fluke

Michele and Dean Frerker
 Prateek Garg and Ravija Amlani
 Scott and Melissa Gue
 Brian Guy
 Bart and Toni Heath
 Mary and Tom Herche
 Joan and Patrick Hogan
 Carolyn and George Hubman
 Shawn Hurley
 Jim and Meredith Hutchins
 Mindy Jones
 Karol and Leyton Jump
 Travis and Suzanne Keeler
 Kathy and Mark Keithly
 Jeffrey and Barbara King
 Randall and Martha Kintner
 Sarah Korkowski
 Kimberly Kuresman
 Jim Ladd
 Robert Land and Renee McCormick
 Lawson Sarkowsky Family
 Mark Levine and John Keppeler
 Carol Lewis and Andrew Pearson
 Ken and Darlene Lowe
 Twyla and Tom Lucas
 Brian Matthew
 Terry McCarthy
 Chie Mitsui
 Gregg and Judy Nelson
 Nancy and William Nichols
 Nancy Nishimori
 Jake and Gretchen Olsen-Jacobsen
 Karen E. Phillips
 Mary Pigott
 Eleonore Pottenger
 Richard and Gail Pyle
 Ken Ragsdale
 Dennis Reichenbach
 Rachel and Dave Robert
 John Roos
 Michelle Ullick Rosenthal
 Scott Schade and Lisa Kjaer-Schade
 Stephanie Schuster and Chris Tezak
 Darren and Anne Shakib
 Kathryn M. Shields
 Eric Smith
 Peggy and Greg Smith
 Marilyn and Doug Southern
 Mary Stevens
 Jeffrey Sutherland and Ben Aguiluz
 Rose Tatlow and Neil Roseman
 Constance Thayer
 Jim and Kathy Tune
 Jean B. Viereck
 Karen and Mark Weber
 Amy Whittenburg and Stephen Rattner
 Madeline Wiley and Bob Smithing
 Adrienne Wu
 Ken and Julie Young
 4 Anonymous

PRODUCER'S CIRCLE

Kathy Aaron
 Monica Adams
 Tyler and Georgia Addington
 Carol and Ray Airone
 Ann and Joe Ardizzone
 Edith and Ray Aspire
 ArtsFund – Peter F. Donnelly Merit Fund
 Dave and Leigh Baer
 Jack and Bea Baker
 Amy Banovich
 Melissa Barrett
 Doug and Maria Bayer
 Rick and Linda Beck
 Ronald L. Berenstein
 Bill Berry
 Glen and Sherri Bodman
 Neal and Katherine Booth
 Brandon Bray
 Sue Anne Brent
 Howard and Kay Burton
 Mike and Lynne Bush

Karen Caldwell
 Edward and Nancy Callaway
 Karen Cameron
 Mary Cameron
 Arthur and Kristine Carre
 Ed and Kelly Clark
 Marilee and Nile Clarke
 David Coons
 Sheila and Michael Cory
 Sandra Cox
 Diana Cretoll
 Dayle and Lisa Crockett
 Kevin Custer
 Christina Cyr and Alan Page
 Walton Dabney
 Dorcee and Bob Davenport
 Greg Davis and Larry Besk
 The DeVinc Family
 Beth and Chad Devries
 Wende Doohan
 Ellen Duernberger
 Tambara Dugaw
 Mark Durfee
 Robert Ehrlich
 Craig and LeAnn Elkins
 Vicki Fabre
 Jennifer and Michael Faddis
 Sophy and John Fan
 Fielder Family
 Charles Fink and Leonard Jones
 Mary Forno
 Fred Fox
 Steve Freimuth
 Richard and Barrie Galanti
 Carver and Carmen Gayton
 Sarah Giese
 Kathy and Kelly Graffis
 Brian and Rebecca Grant
 Jennifer Guild
 Marie and Brad Gunn
 Mike Hackett and Cherie Lenz-Hackett
 Catherine Hall
 Eric and Merle Hamada
 Chuck and Kathy Hamilton
 Beth Hammonds
 Helen and Adam Harnetz
 John and Katherine Harnish
 Deb, Tod, Jasmine, and Eliana Harrick
 Deborah Haynes
 Pamela Hendrickson
 Tina and Randy Hodgins
 Christa Holmes
 Laurin C. Huffman II
 Alice Hurd Memorial Fund
 Marilyn Iverson
 Kathy and Michael Jackson
 Kenneth and Kathleen Jakobson
 Linda Jensen
 The Jezorek Family
 Dave and Rio Jones
 Judy and Jerry Karwhite
 Jan Kendle
 Konstantin and Kristi Komissarchik
 Teri Kopp and Walt Weber
 Bill and Michelle Krippaehne
 Quentin and Barbara Kuhrau
 Janet and Perry Kusakabe
 Patrick and Cheryl Layman
 Paulette Lee
 Ben Leifer
 The Lesser Family
 Brian Levitt and Stephen Lee
 Gary Locke
 Capt Michael Lockwood, USN ret., Mrs.
 Angelene Lockwood and Jeffrey
 Lockwood
 Davia Loren
 Floyd and Kim Lorenz
 Michael Maves and Jody Tedford
 Meredith McClurg and Jeffrey Krauss
 Kyle McEligot and Paul Brett
 Jim and Laura Mendoza
 Tami and Joe Micheletti

* DECEASED
 + IN-KIND

John and Wende Miller
 Kathy and John Moodie
 Jeffery C. Morris - The Happy Cooker
 Mitzi and John Morris
 Tiffany and Michael Murray
 Jeff and Bev Neher
 Ben and Denise Nelson
 Kevin Norman
 Laura and Mark Nudelma
 Steven and Victoria Odden
 Rick and Debbie Pabst
 David and Debbie Palmquist
 In Memory of Connie Parker
 Kimberly and Chris Pastega
 Amanda Paul
 Petra Charitable Foundation
 Suzanne and Lee Pintar
 Mary Power
 Sandi and Jim Reed
 Sally S. Renn
 David and Barbara Repanich
 Richard and Sharon Reuter
 Bob Rhodehamel and Dana Snyder
 Norman and Constance Rice
 Michal and Maureen Rimkus
 Marilyn and Patrick Roberts
 Sally Roberts
 Mimi G. Rosen
 Lori and Doug Rosencrans
 Pam Rosendahl
 Curtis and Myrna Rosler
 F Sakura
 John Scannell and Wendy Kelling
 E Schwab
 Edward and Kathleen Sherry
 Miriam Shirley and Lynne Keller
 David Showalter
 Bob and Pan Smith
 Sarah Sorensen
 Catherine Sreenivasan
 Todd and Pauli Stakset
 Colette Stallbaumer
 Anne and Mark Stanton
 Leigh and Susi Stevens
 Perry and Diana Stultz
 Chris and Lisa Swan
 Terrence and Victoria Sweeney
 Gene and Ruby Tanaka
 Gretchen and Ted Taylor
 Daniel Tebow
 Matthew and Catherine Coles Tedesco
 Paul and Helen Tharp
 Stephen and Terri Thomas
 Polly and Jason Thompson
 Ronald and Barb Thompson
 Chris and Lisa Thomsen
 Tracy and Michael Thornton
 Paul and Liz Thorpe
 Carole Tovar
 Eric and Julie Trott
 Helen Viae
 Bradaigh and Thor Wagner
 Christina and Mark Walker
 William H. Ward
 Thea Warner
 Curtis and Margo Wright
 Paul Yaros and Joel Young
 5 Anonymous

PATRON

Nance and Steve Adler
 Margaret Alston
 Susan Andersen
 Kim Anderson
 Reilly Anderson
 Richard and Dianne Arensberg Donor
 Advised Fund
 Pamela A. Baade
 Louisa Barash
 Jeff Barr

Patty and Jimmy Barrier
 Anne Louise Barry
 Corrin Bauer
 Merrill Behnke
 Jo Ann Berg
 SL Bolton
 Mary Bradley
 Sue Bradner
 Philip Brazil
 Larry and Donna Brooke
 Denise and David Brumbaugh
 Ted Bruya
 Nancy Cahill and David Given
 Virginia Cain
 Tom and Claudia Campanile
 Daryl Campbell
 Kathy Cartwright/Dimension Systems
 Doris and James Cassan
 Angela Chabot
 Hang Chen
 Andrew and Lorna Chin
 Christopher Cook and Sandra Salzer
 Matt Cook
 Brenda Cooper
 Gary and Consuelo Corbett
 Rick and Barbara Cordray
 Rodney P. Cornwall
 Jack Cousins
 Gretchen and Brad Covey
 Aaron Crawfis
 Julie Crudele
 Richard Cuthbert and
 Cheryl Redd-Cuthbert
 Amy Damerow
 Tom E. Deacon
 Mike and Maggie De Laurentis
 Cynthia Demeyere
 Thomas Desrochers and Erin Pfluer
 Ana Devage
 Gail and Bill Dewey
 Kristine Dorrain
 Sharon Ducey
 Donna Dupras
 Malaika Eaton
 Ellis Family Charitable Account
 Sandra L. English
 Robert Frankland
 Sharon Friel
 The Estate of Lowell Fritz
 SallyAnn Geiger
 Neil F. Gerth
 Cecile Greenway
 Seán and Bernadine Griffin
 Shelly Hall
 Wendy Halpin
 Alexandra Hamilton
 Tyler Hamilton
 Doug Hanhart
 Cathy and Larry Harger
 Cathi Hatch
 Richard and Marilyn Herzberg
 David Hill
 Sandy and Steve Hill
 The Hinnant Family
 Toni and Rod Hoffman
 Katy Hollenbaugh and Chris Carollo
 Wayne and Robbi Hollister
 Hannah Hoose
 Ronalyn and Clifford Huenergard
 Sharri and Jim Humphries
 Winifred and Peter Hussey
 Walter Jaccard and Bonni Sundberg
 David Jensen
 Kristi E. Jones
 Randy Karr
 Lee Kearns
 Marilynn Ketcherside
 Dave and Deb Kreidler
 Kerry Kuenzi
 Nicole Kupchik

Edwin C. "Ned" Laird
 John Laks
 Oscar Lara and Stephanie Decker
 Trevor Lastuka
 Lucy Lauterbach
 Henry Lee
 Randy M. Lee and Mari Hooten Lee
 Sandy Lew-Hailer
 Allan Lipstein
 Becky Loeb
 Angela Loney
 Christina and Brad Mace
 Patrick and Polly Madden
 Tina Magpayo
 Ceci and Joe Mano
 Blythe Manson
 Patrick Margherio
 Cat and Cliff Martin
 Carolyn McClurkan
 Liz and James McDaniel
 Allison McGinnis
 Mike Meagher
 Georgene Mellom
 Aaron Merrill
 Shane Mitchell
 Shelley Moffatt
 Lonnie and Elinor Montgomery
 Jeff Myrter
 Roger Nyhus
 Kerry P. O'Keefe
 Fran Olson
 Brandon Paddock
 Elisa and Chad Parry
 Catherine Pitcher
 PM - Lindquist Family
 Wendy and Mike Popke
 Fra Na and Bill Ready
 Marilyn and Dennis Reid
 Victoria Ries and Sam Saracino
 Lisa and Bradley Rinker
 Betty and Wayne Robertson
 Nancy Robinson
 Dale and Karmen Rolf
 Margaret Rottsoik
 Philip Rueker
 Lene Russell
 Stephen Schenzel
 Briana Schiavone
 Jasper Schneider
 Susan Shanafelt
 Maria Shearer
 Dan Shih and Ted MacGovern
 Neal and Linda Shulman
 Chad Shurtz
 Helen Sing
 Michael and Edie Smith
 Sallie Snyder
 Jamie Spivey
 Lisa and John Stewart
 Gail Stone
 Melissa and Jeremy Stone
 Jill and Paul Strohmeier
 Michael and Dominique Stuck
 Jeffrey Sullivan and Jenny Pang
 Michelle Terry
 Ann Vandeman
 Sylvia Van der Weide
 Ken Wade
 Kathy Wagner
 Louis Wagner, Jr
 Jan Wanamaker
 Hank and Yoko Weaver
 Rochelle and Scott Whelan
 Wendy and Jeffrey Woolsey
 H.S. Wright III and Kate Janeway
 Jasmine Yeh
 Grace Yuan
 3 Anonymous

SEASON SPONSOR

ARTSFUND 

SEASON RESTAURANT SPONSOR

purple

CAFÉ AND WINE BAR

MAJOR SPONSORS



THE NORCLIFFE
FOUNDATION



**Dawkins
Charitable Trust**



**Jolene
McCaw Family
Foundation**



**Loeb Family
Charitable
Foundation**



SPONSORS

Freestone



Morgan Stanley
THE AISTEAR GROUP
AT MORGAN STANLEY

**Mary See
Foundation**



Banner Bank, Davis Wright Tremaine, Wright Runstad & Company, and Morgan Fund at Seattle Foundation.

PARTNERS

(In-kind support)

Puget Sound Business Journal, DCG One, The Capital Grille, Davis Property & Investment, Ethan Stowell Restaurants, Fonté, and Enterprise.

WHAT'S ON STAGE IN SEATTLE?



eSe Teatro presents:

TWO BIG BLACK BAGS

a play written & directed by
JULIETA VITULLO

Sept 21 - Oct 14,
West of Lenin

WEST
of
LENIN

Shunpike
PRODUCTION AND BUSINESS GROUP



Pork Filled Productions in association with Theatre Off Jackson presents



Bloodletting

Oct. 19 - Nov. 4

7:30 PM Thursday - Saturday

2:00 PM Sunday

7:30 PM Monday Oct. 30

Theatre Off Jackson

**409 7th Ave. S.
Seattle, WA**

A play by **Boni B. Alvarez**

Directed by **Zenaida R. Smith**

PORK-FILLED.TICKETLEAP.COM/BLOODLETTING



POWER NEW WORKS, INTIMATE EPICS, AND LOCAL ARTISTS.

Donate today and help ACT challenge how stories are told through our coming season of inquisitive, heartfelt, and adventurous productions.

Donors who contribute \$100 or more annually join our Partner Circles and enjoy access to engaging opportunities and behind-the-scenes events. Donors at the Activist level will be invited to a reception at the New Works Northwest Festival in October.

DONATE



TODAY

Falls Legacy Circle

**Do you love ACT Contemporary Theatre?
Power the future!**

You can help the curtain stay up! It's simple – name ACT as a beneficiary of your retirement plan, life insurance policy, or other account.

We will include you in the Falls Legacy Circle when you let us know you've named ACT as the beneficiary of an account or in your estate plans.



For more information or to inform us of your plans, please contact Director of Development Jill Robinson at jill.robinson@acttheatre.org.



DID YOU KNOW THAT MANY COMPANIES MATCH THEIR EMPLOYEES' CHARITABLE GIVING?

**We are honored to partner with
dozens of employers who match
employees' donations to ACT.**

Since March 2020, over 10% of corporate support comes from employee matches – we're grateful to our donors and partners at Adobe, Bill & Melinda Gates Foundation, The Boeing Company, Coca-Cola, Google, Microsoft, Nordstrom, and more.

Check with your HR manager or supervisor to see if your gift can be matched and watch your impact grow!





THANK YOU!

ACT Contemporary Theatre is home to a luminescent Community of Creators including writers, actors, directors, designers, technicians, and supporters.

Donors are a central part of this Community, and we are so grateful for your support.

ACT is proud to recognize all donors of \$1 and more in alphabetical order



THE 5TH AVENUE THEATRE EXECUTIVE BIOS



BILL BERRY he/him (*Producing Artistic Director*) served as The 5th Avenue Theatre's Associate Producing Artistic Director and Casting Director from 2002-2009, when he became the Producing Artistic

Director. He's directed *West Side Story* (Seattle Times Footlight Award, 2007), *Wonderful Town* (Seattle Times Footlight Award), *Wizard of Oz*, and *Smokey Joe's Café* at The 5th; *Beatsville* (Asolo Rep), *On the Town* (Paper Mill Playhouse), and *Cabaret* (The 5th, Ordway Center, American Musical Theatre, and Theatre Under the Stars); and made his Broadway directorial debut in 2014 with *First Date* (Longacre Theatre). From 2002-2009, he was also the Producing Director for The 5th's education and outreach programs, for which he spearheaded Fridays @ The 5th and The 5th Avenue Theatre Awards: Honoring High School Musicals, and substantially increased the reach of the Educational Touring Company, which, combined, now serves nearly 30,000 students annually throughout the Northwest. He serves on the board of NAMT is a proud SDC member.



KATIE MALTAIS she/her (*Managing Director*) was recently appointed as the new Managing Director for The 5th Avenue Theatre. She is a values-driven leader who centers teamwork, transparency, and striving towards

an anti-oppressive world. Katie recently served as Managing Director of Stages in Houston; there, she oversaw all business aspects and revenue areas of the regional theater, in addition to navigating the return to live performance and in-person operations post-Covid. During her tenure, Stages had its highest revenue season in history, produced 12 world premieres, and welcomed its youngest and most racially diverse audience ever. Katie spearheaded the creation of the Houston Theater Training Coalition, a citywide initiative to cultivate and support emerging theater-makers. Prior to joining Stages, Katie served as Managing Director at Curious Theatre Company in Denver, where she created "The Loyalty Target," a progressive model of arts administration that has been adopted by arts organizations across the United States and Europe. She previously worked for the international consulting firm TRG Arts, where Katie oversaw the client services team as well as personally worked with such notable organizations as Nederlander Alliances, Center Theatre Group, Goodman Theatre, and Arts Club Theatre Company.

ACT CONTEMPORARY THEATRE EXECUTIVE BIOS



JOHN LANGS (*Artistic Director*) has served as Artistic Director since 2016. He joined ACT in 2013 as Associate Artistic Director. Langs' 16-year freelance career afforded him the opportunity to work with many prestigious

theater companies across the country. He has directed productions at Playwrights Horizons NY, Ensemble Studio Theater NY, Milwaukee Repertory Theatre, Lookingglass Theater Company in Chicago, Circle X in Los Angeles, The Resident Ensemble, New Century Theatre Company, Washington Ensemble Theatre, and Seattle Shakespeare Company. Some of his favorite directing credits include *The Shaggs Philosophy of the World* (Los Angeles Drama Critic Circle Award for Best Original Musical and Nominated NY Drama Desk and Lucille Lortel Award), *Brothers Karamazov* (seven LADCC Awards, including Best Production of the Year and Best Direction), and directing Kurt Beattie in *King Lear*. Langs received the first annual Seattle Gregory Award honoring excellence in direction for *The Adding Machine*. As a dedicated fan of original work, Langs has shepherded over a dozen projects to their premiere production. Langs received his directing degree from the University of North Carolina School of the Arts.



ANITA SHAH (*Managing Director*) is an accomplished arts and entertainment executive with 25+ years of experience in the arts, entertainment, and events industry. Anita hails from New York City, where she worked with

organizations such as Lincoln Center, Cedar Lake Contemporary Ballet, Good Morning America, New York Live Arts, Blue Man Group, and numerous Broadway productions, such as the Tony Award-winning productions *Once* and *Clybourne Park*. Anita has had a long career in the theater, beginning as a technician and designer, then transitioning into production management, venue management, producing, and executive organizational leadership. Anita has stewarded productions across the nation and internationally. This unique perspective of insight at numerous areas of our industry informs her work in creating more supportive and equitable work spaces in the pursuit of making transformative theatrical experiences. Anita is a strong advocate of the arts with a proven track record of accomplishments, including the ability to generate and implement vision and strategy on all levels of an organization while prioritizing team leadership. Anita received her BFA from Emerson College.

ACT CONTEMPORARY THEATRE LEADERSHIP

BOARD OF TRUSTEES

Cynthia Huffman – Chair
Erika Nesholm – Secretary
Gary Houlahan – Treasurer
Bill Kuhn
John Langs*
Al Roundtree
Anita Shah*

Ben Spicer
Hana Tadesse
Bob Wright**

*Ex-Officio

**Non-voting

ADVISORY COUNCIL

Sheena Aebig
Kermit Anderson
Joan Dee Barokas
Kurt Beattie*
Laurie Besteman
Jeannie M. Falls
John H. Faris
Charles Fitzgerald
Brad Fowler
Katharyn Alvord Gerlich
Carolyn H. Grinstein
Sara Comings Hoppin
C. David Hughbanks
Kate Janeway
Jonathan D. Klein
Diane Lind
Jane W. Lyons
Nadine H. Murray
Douglas E. Norberg

Dr. George Ojemann
Kristin G. Olson
Eric Pettigrew
Pamela Powers
Katherine L. Raff
Suzanne Ragen
Catherine Roach
Jo Anne Rosen
Faye Sarkowsky
Carlo Scandiuzzi
Susan Trapnell
Brian Turner
George V. Willoughby

Richard C. Clotfelter
Esther Schoenfeld
Emeritus Council

*Artistic Director Emeritus

FOUNDATION BOARD

Kermit Anderson
President

Brad Fowler
Vice President

Gary Houlahan
Treasurer

Jim Minorchio
Secretary

Eric Bennett
Trevor Cobb
Rachel McCracken
Sheila Smith



SAVE THE DATE

Party at ACT



Friday, April 19, 2024

An inspiring night to raise money supporting vital contemporary theatre!

Tickets start at \$150.

For advance tickets, contact

Kristine Haroldson, Stewardship & Events Coordinator,
kristine.haroldson@acttheatre.org.

EXECUTIVE

John Langs
Artistic Director
Anita Shah
Managing Director

ARTISTIC

Shana Bestock
Artistic Associate, Education
Margaret Layne
Casting

DEVELOPMENT

Kristine Haroldson
Stewardship and Events Coordinator
Joceline Hitchcox-Lain
Development Assistant
Katie McKenna
*Development Officer for
Institutional Partnerships*
Jill Robinson
Director of Development

FINANCE

Lesley Fox
Interim Director of Finance
Kevin Peterson
Staff Accountant
Summer Stack
Finance Department Assistant

HUMAN RESOURCES

Margaret Henning, 501 Commons
HR Consultant

MARKETING, SALES, AND COMMUNICATIONS

Tess Berger
Design and Communications Manager
Colleen Flanigan
Interim Director of Marketing
Amber Granger
Marketing Associate
Paige Lee
Digital Media Manager
Nathaniel Pulse
Sales and Marketing Analyst
Michelle Sanders Communications
Public Relations

OPERATIONS

Charlie Warden
Director of Facility Operations

PATRON SERVICES

Tanya Wanchena
Patron Services Manager

Box Office

Peter Hiebert
Box Office Manager
Jeremy Jackson
Box Office Assistant Manager
Ada Hoch-Schneider
Melodie Gorow
Amber Granger
Box Office Representatives
Christina Liburd
Box Office Lead

Patron Services Staff

Monica Axelsen

Dano Beal
Renee Boehlke
Talia Colten
Maria Durham
Natalia Elston
Karen Gillespie
Truxton Ivory
Coco Justino
Marlene Lahaise
Alfreda Lanier
Lynn Lambie
Mel Longley
Kwan Lui
Sarah Meltzer
Spencer Moore
Tracie Nettles
Maryann Palmer
Louis Paquette
Markus Rook
Sharen Spencer
Summer Stack
Erin Sutter
Katy Swensen
Carole Sykes
Haleigh Wanchena
Claudia Webb

PRODUCTION

Lisa Bellero
Head Scenic Painter
Zachary Burns
Head Audio Technician
Chandler Eichele
Stage Operations Swing Technician
Nick Farwell
Stage Operations Supervisor
Melissa Gomez
First Hand / Swing Dresser
Justine Halsey-Martin
Lead Props Artisan
Cal Hostetler
Lead Scenic Carpenter
Ada Karamanyan
Production Office Manager
Eric Koch
Technical Director
Sally Mellis
Head Dresser
Alyssa Montgomery
Senior Director of Production
Nick Murel
Associate Technical Director
James Nichols
Head Stage Carpenter
A G Quinn
Lead Scenic Carpenter
Jeff Scott
Scenic Charge Artist
Valerie Snyder
Head Draper
Logan Thomas
Head Electrician
Jason Tribby
Head Scenic Carpenter
Christine Tschirgi
Costume Shop Manager
Will Widick
Properties Shop Manager
Cedric Wright
Head Props Artisan

THE 5TH BOARD OF DIRECTORS

Beth Porter*

Chair

Richard Meadows*

President

Tom Handley*

Treasurer

Grace Yuan*

Secretary

Les Biller*

Immediate Past Chair

Kenny Alhadeff*
Marisa Behnke*
Randy Hodgins
Nina Jennings
Lee Keller
Patrick F. Kennedy

SaSa Kirkpatrick
Kyle Levine
Carmen Mayo*
John Oppenheimer*
John Payes*
Stephen P. Reynolds*
Emory Thomas, Jr.

Bonnie Towne
Gary Tucci
Becca Wert
Bill Wert*
Eileen Glasser Wesley
Kenneth Willman*

PAST CHAIRS OF THE BOARD

Les Biller 2021–2022
Bonnie Towne 2018–2021
Stephen P. Reynolds..... 2015–2018
Wanda J. Herndon 2013–2015
Barbara L. Crowe 2011–2013
Rob Sexton..... 2009–2011
Norman B. Rice 2007–2009
Kenny Alhadeff 2004–2007
William W. Krippaehne, Jr. 2002–2004
Bruce M. Pym..... 2000–2002

John F. Behnke 1998–2000
Faye Sarkowsky 1996–1998
Donald J. Covey 1994–1996
Kenneth L. Hatch..... 1992–1994
John D. Mangels 1990–1992
Robert F. Buck 1988–1990
Stanley M. Little, Jr. 1986–1988
R. Milton Trafton..... 1983–1986
W.J. Pennington..... 1981–1983
D.E. Ned Skinner..... 1979–1981

BOARD EMERITUS

Linda Anderson
Ann Ardizzzone
Clodagh Ash**
Carl Behnke
Les Biller*
Robert J. Braun
Debbie Brown
Steve Camp
Barbara L. Crowe
Gary Fuller

Wanda J. Herndon
Margaret Inouye
Bill Krippaehne
Anna Laszlo
Mark Levine
Gary Locke
Elizabeth Lund
John Mangels
Bill Nichols
Tom Norwalk

Bruce Pym
Ann Ramsay-Jenkins
Anthony Repanich
Norman B. Rice
Faye Sarkowsky
Rob Sexton
Eric Trott
Tom Walsh**
Sterling Wilson

Founding Managing Director
Marilynn Sheldon

Artistic Director Emeritus
David Armstrong

Managing Director Emeritus & Senior Advisor
Bernadine C. Griffin

*Denotes Member of the Executive Committee
**Deceased

Bill Berry

Producing Artistic Director

Katie Maltais

Managing Director

ARTISTIC

Jay Woods

Associate Artistic Director

James Rocco

Associate Producer

Neen Williams-Teramachi

Director of New Works

Matt Perri

Resident Music Supervisor

Brodrick Ryans

Resident Casting Associate & Artistic Liaison

Laura Karavitis

Company Manager

Gabrielle Norris

Assistant Company Manager

EXECUTIVE & ADMINISTRATION

Emiko Phillips

Temporary Executive Assistant

to Ms. Maltais & Mr. Berry

Chloe Starbird

Office Coordinator

**MARKETING, COMMUNICATIONS,
& GUEST SERVICES**

Becky Witmer

Director of Marketing & Guest Services

MARKETING & PUBLIC RELATIONS

Claire Koleske

Assistant Director of Marketing

Isaiah Custer

Senior Communications Manager

Kevin Calhoun

Graphic Designer

Simran Kaur

Digital Content Specialist

Becky Kelley

Senior Graphic Designer

Bri Little

Copywriter & Editor

Ann Reynolds

Public Relations Manager

GUEST SERVICES/TICKETING

Khajha Rogers

Senior Guest Services Manager

Morgan Picton

Guest Services Manager – Box Office

Amanda Green

Guest Services Assistant

Manager – Phone Center

Serena Hope Hohenstein

Guest Services Assistant Manager – Box Office

Chad Biesman

Corporate & Group Sales Manager

River Rodriguez

Group Sales Assistant

Dana Winter

Guest Services Lead – Box Office

Karli Bentley, Emi Faltinson, Antoinette

Lindo, Bobby Mañuva, Lena Pulve,

Melissa Rubio, Arwen Wagner

Guest Services Associates

FRONT OF HOUSE

Valerie Kouldukis

Front of House Manager

Ed Lammi

Assistant Front of House Manager

Lori Adler, Cassie Hohn, Anna

Larsen, Elizabeth Miller

Front of House Leads

Isabelle Allenton, Dano Beal, Sally Birks, Andrea

Black, Kathleen Bryant, Barbara Burch, Elizabeth

Campbell, Sarah Castaldo, Frank Chinn, Dayna

Cole, Margaret Connor, Mattie Crane, Barbie

Denend, Genna Dow, Jen Eatchel, Annie Griffin,

Karen Hall, Nancy Harris, Isaiah Hsu, Sarah

Hudson, Nina Kibria, Dyson Kilodavis, Sev

Krauss-McClurg, Josephina Labore, Malia Lapanja,

Mary McClary, Jane Muxen McCullough, Lillia

Nelson, Elaine Romano, Riley Stalker, Meadow

Swanson, Cami Taliaferro-Barber, Veva Young

Head Ushers

Andrea Black, Jon Deaux, Mack

McGee, Randy Yates

5th Avenue Theatre Security

PHILANTHROPY

Paula Tharp

Director of Philanthropy

Christine Johnson

Associate Director of Philanthropy

Desiree Sarapsi

Assistant Director of Philanthropic Operations

Jill Big Eagle

Assistant Director of Corporate

& Foundation Relations

Kendra Allen

Grant Writing Specialist

Matthew Bosley

Annual Giving & Marketing Coordinator

Olivia Brent-Fielding

Individual Giving Manager

Emily O'Leary-Wild

Philanthropic Operations Assistant

Andy Rowland

Individual Giving Manager

Kate Speck

Senior Philanthropy Manager

Thea Warner

Event Consultant

EDUCATION & ENGAGEMENT

Ariel Gomez Bradler

Director of Education & Engagement

Amberlee Joers

Associate Director of Education

Aviona Rodriguez Brown

Associate Director of Engagement

Jessica Ellison

Education & Engagement Programs Manager

Miranda Quintanilla

Education & Engagement Coordinator

Albert Evans

Dramaturg

Beth Pollack

Dramaturg & Curriculum Specialist

FINANCE

Rachel Robert

CFO

Keith Cousins

Controller

Gi Hara

Forensic Accountant

Brandi Sweet

Payroll Manager

Selby

Accountant

Lesley Fox
Federal Grant Reporting

HUMAN RESOURCES

Fabrizio Almeida
Director of Human Resources
Maggie Wegener
Human Resources Generalist

INFORMATION TECHNOLOGY

Jim Cornelson
Consulting CTO
Maryke VanBeuzekom
Director of IT
Nichole Mines
Associate Director of IT
Douglas Day
Systems Administrator
Anne Christensen
Helpdesk Associate

OPERATIONS

Gregory Martin
Director of Facility Operations
Alda Shepherd
Facilities Manager
Jessica Severance
Covid Safety Specialist
Monty Rozema
Covid Safety Coordinator
Karen Hall, Janel Hammar, Carrie Jarvis, Dean LaRoque, Bobby Mañuva, Mack McGee, Paco Ybarra
Stage Door Security Staff

PRODUCTION

Joan Toggenburger
Director of Production
Ryan Gastelum
Production Manager
Matthew Carleton
Technical Director
Mo Chapman
Associate Production Manager
Kyle Brisby
Production Administrator
Jacob Palmer
Associate Technical Director
Shannin Strom
Costume, Wardrobe, & Hair Director
Rachel Miller
Season Production Assistant

SETS & RIGGING

Laurel S. Horton
Head Carpenter
Ken Berg
Production Carpenter
Benjamin Baird
Assistant Carpenter
Forrest Rumbaugh
Assistant Carpenter/Driver
Dave McCawley
Head Flyman
Scot C. Allison
Head Rigger
C. Luke Mathis
Head Builder
Austin Smart
Shop Foreman
Brian "Chili" Culver
Builder

LIGHTING

Pamela Mulkern
Head Electrician
Sean Callahan
Production Electrician
Teri Cobourn
Assistant Electrician
Christina Hughes, John Small
Key Electricians
Mary Heffernan
Moving Lights Programmer

SOUND

Nathan Schilz
Head Sound Engineer
Jinnifer Lee, James Rudy
Assistant Sound Engineers
Kurt Conway
Swing Sound Engineer

PROPS

Catharine Case Lutes
Prop Head
Tristan E. Hansen
Production Prop Head
Nat Whitten
Prop Assistant

SCENIC ART

Gemma Kealy
Charge Artist

COSTUMES & WARDROBE

Christopher Moad
Costume Shop Floor Manager
Sarah Jarrell Wade
Wardrobe Head
Jim Westerland
Wardrobe Assistant
Shellie Moomey
Head Draper
Elizabeth Titus Baker
Head Cutter/Tailor
Jeanna Gomez
Head Crafts
Alice Cao, Teresa O'Leary, Kay Wiley
Staff First Hands
Ruthann Swanson
Draper
Cora Brown
Crafts Assistant
Kelly Caffey, Meagan Kirby, Alex McCoy
Stitchers

HAIR & MAKE-UP

Jason Goldsberry
Head Hair & Makeup
Glenna Williamson
Assistant Hair & Makeup

ATTORNEYS

For The 5th Avenue Theatre:
Levin Plotkin & Menin
Loren H. Plotkin and Susan Mindell
Lawton Penn
Sendorff & Baruch, LLP

SPECIAL THANKS

Ascii Interactive · Evergreen Fire and Safety
JTM Construction · Nyhus Communications PSR
Mechanical · Rainier Building Services
The University of Washington

Stephanie Saelee

Stephanie is a successful Real Estate Developer & Managing Broker in the Pacific Northwest where she has earned the trust and respect of discerning buyers, sellers and investors.

With over 20 years of sales, marketing and development experience. Stephanie is highly regarded for her business acumen, work ethic & ability to negotiate complex real estate transactions. Her integrity and professionalism makes her one of the top agents in the area.



**Contact Stephanie and her team
for a free consultation.**

ssaelee@remax.net | 206-795-8111



THE
RE/MAX
COLLECTION[®]

Fine Homes & Luxury Properties

RE/MAX
COMMERCIAL