

encore

FEBRUARY 2011

arts programs



Vanities

a new musical

2010 - 2011 SEASON

IN THE HEIGHTS SEPT 28 - OCT 17

A CHRISTMAS STORY: THE MUSICAL! NOV 26 - DEC 30

VANITIES FEB 4 - APR 3
AT ACT-A CONTEMPORARY THEATRE

NEXT TO NORMAL FEB 22 - MAR 13

9 TO 5: THE MUSICAL APR 5 - APR 24

GUYS & DOLLS MAY 12 - JUN 5

RODGERS & HAMMERSTEIN'S
OKLAHOMA! JUL 8 - AUG 6

THE **5TH** AVENUE
THEATRE
CELEBRATING 30 YEARS



A BROKEN HEART. A BOLD DECISION. A NEW FOUND LIFE.

ELSA OLIVA thought she had simply injured her back. But when she was admitted to the ER at Northwest Hospital & Medical Center, Elsa was having a heart attack. She required open-heart surgery – but in her weakened state it was simply too risky.

So together, Northwest Hospital cardiologist Dr. Gary Weeks and UW Medicine cardiac surgeon Dr. Gabriel Aldea made a decision that would ultimately save Elsa's life: Dr. Weeks performed an emergency angioplasty to open up her blocked coronary artery to stabilize her, and once her heart was strong enough, Dr. Aldea performed a successful quadruple bypass.

This sort of teamwork doesn't happen by chance. It's the result of a decade-long partnership between Northwest Hospital and UW Medicine's Regional Heart Center. A partnership that has enriched Northwest Hospital's cardiac program and has resulted in a lifetime of excellent care for every one of its patients. If you were to ask Elsa, she'd tell you there's no reason to go anywhere else.

UW Medicine
HEALTH SYSTEM

From here, we change the world.

HARBORVIEW MEDICAL CENTER | UW MEDICAL CENTER | NORTHWEST HOSPITAL & MEDICAL CENTER
UW NEIGHBORHOOD CLINICS | UW SCHOOL OF MEDICINE | UW PHYSICIANS | AIRLIFT NORTHWEST

FOR MORE STORIES, GO TO [UWMEDICINE.ORG/STORIES](https://uwmedicine.org/stories)

From the Artistic Directors



David Armstrong
Executive Producer and
Artistic Director
The 5th Avenue Theatre



Kurt Beattie
Artistic Director
ACT-A Contemporary Theatre

The production you are about to see is the result of a unique collaboration between two of Seattle's leading not-for-profit theater companies — ACT-A Contemporary Theatre and The 5th Avenue Theatre.

Over the past few years the Puget Sound region has seen a great deal of creative collaboration among our world class arts organizations, often with The 5th Avenue and ACT leading the way.

ACT has made partnering with dozens of area theater, dance and music groups a key part of its mission by showcasing them in its many beautiful theater spaces as part of its Central Heating Lab program. And The 5th Avenue has memorably partnered with Spectrum Dance Theater and the Seattle Men's Chorus on several productions and also spearheaded last spring's *Seattle Celebrates Bernstein* Festival with 22 local arts organizations participating.

So it is only seems natural that two organizations with a knack for collaboration and such close proximity would join forces to produce an exciting new musical. Theater fans with long memories know that this is not the first time the two organizations have partnered on a project — in 2001 our two theaters co-produced Stephen Sondheim's masterpiece *A Little Night Music* starring Haley Mills and Claire Bloom. And we certainly do not anticipate that it will be the last.

This partnership provides each of our theaters with the opportunity to include programming in our season that would be difficult for us to do on our own. The 5th Avenue has for some time been exploring ways in which it could produce at least some of the many the wonderful "Off-Broadway" musicals that would be too small in scale for its 2,100-seat venue. And ACT has been seeking to make musical theater a more regular

component of its programming. A collaboration such as this makes that much more feasible, especially during these challenging economic times.

Vanities is the perfect choice for us to join forces in producing. The original play (from which this new musical has been adapted) was a phenomenal success in the late 1970s. It ran six years Off-Broadway and quickly became the most produced play in America with productions at nearly every regional theater across the country.

The play went on to be produced around the world and was filmed for HBO in 198x. It has been hailed as one of the first dramatic works to address the ways in which the cultural changes of the 1960s and '70s affected the lives of women who came of age during that tumultuous period.

Now the play's original author Jack Heifner and new composer/lyricist David Kirshenbaum have reinvented *Vanities* as a musical. We are thrilled that they will both be in residence with us for much of the rehearsal process as this new work continues to grow and develop.

Perhaps the most exciting aspect of this venture is the opportunity it creates for our staffs and Board of Directors to work together. Merging our sometimes-disparate organizational cultures is sometimes challenging, but always rewarding. We have so much to learn from each other we will both be better theater companies because of this collaboration.

David Armstrong
Kurt Beattie



EXETER HOUSE

Urban Living.
Downtown Seattle.
Unlimited Possibilities.

Take a stroll through the heart of Seattle, visit a museum or relax in the park...Exeter House offers unlimited possibilities in senior living.

PRESBYTERIAN | RETIREMENT COMMUNITIES NORTHWEST
206-622-1300 • www.prcn.net



SAVING LIVES THROUGH RESEARCH



Puget Sound Blood Center was the first blood center with medical and research labs, and we're one of only four blood centers in the country conducting blood research. Among these, we are the most recognized blood research operation in the world. Our studies have advanced blood collection and storage techniques that have made today's bone marrow and organ transplants possible.

Learn more about what our scientists are studying today at psbc.org.

Imagine saving a life.

Puget Sound Blood Center research | medicine | blood & tissue services

February 2011
Volume 8, No. 3

encore
arts programs

Paul Heppner
Publisher

Susan Peterson
Design & Production Director

Ana Alvira, Kristi Atwood, Emily Busey,
Deb Choat, Robin Kessler, Jana Rekosh
Design and Production Artists

Virginia Wright
Online Editor

Mike Hathaway
Advertising Sales Director

Brenda Senderoff
Market Development

Carol Davidson, Sherri Jarvey,
Cherie Singer, Lenore Waldron
Account Executives

Denise Wong
Sales Assistant

Jonathan Shipley
Ad Services Coordinator

Regional Sales Representatives

Marilyn Kallins, Terri Reed, Alison Short
San Francisco/Bay Area

encore
media group

Paul Heppner
President

Mike Hathaway
Vice President

April Morgan
Bookkeeper

Deborah Greer
Executive Assistant

Jake Newman
Associate Publisher – City Arts

Scott Wagner
Vice President – City Arts

Mark Baumgarten
Executive Editor – City Arts

Jana Rekosh
Project Manager/Graphic Design

Virginia Wright
Systems Administrator

425 North 85th Street Seattle, WA 98103
206.443.0445
adsales@encoremidiagroup.com
800.308.2898 x105
www.encoreartsprograms.com

Encore Arts Programs is published monthly by Encore Media Group to serve musical and theatrical events in Western Washington and the San Francisco Bay Area. All rights reserved.
©2011 Encore Media Group. Reproduction without written permission is prohibited.



The 5th Avenue Theatre

David Armstrong, *Executive Producer and Artistic Director*

Bernadine C. Griffin, *Managing Director*

Bill Berry, *Producing Director*

and

ACT – A Contemporary Theatre

Kurt Beattie, *Artistic Director*

Carlo Scanduzzi, *Executive Director*

Present

Vanities

a new musical

Book by

JACK HEIFNER

Music and Lyrics by

DAVID KIRSHENBAUM

based on the original play

Vanities by Jack Heifner

Starring

CAYMAN ILIKA

JENNIFER SUE JOHNSON

BILLIE WILDRICK

Direction & Musical Staging

DAVID ARMSTRONG

Music Director

IAN EISENDRATH

Stage Manager

JEFFREY K. HANSON

Scenic Designer

MATTHEW SMUCKER

Costume Designer

CATHERINE HUNT

Lighting Designer

TOM STURGE

Sound Designer

KEN TRAVIS

Orchestrations & Additional Arrangements

LYNNE SHANKEL

Vocal Arrangements

CARMEL DEAN AND BRYAN PERRI

New York premiere produced by the Second Stage Theatre, Carole Rothman Artistic Director and Ellen Richard, Executive Director, in association with VANITIES LP.

VANITIES: A NEW MUSICAL was presented at the National Alliance for Music Theatre's Festival of New Musicals in 2006.

VANITIES was originally produced by TheaterWorks, Palo Alto, CA.

(Robert Kelly, Artistic Director and Phil Santora, Managing Director)

Subsequently produced by the Pasadena Playhouse

(Sheldon Epps, Artistic Director and Tom Ware, Producing Director)

"VANITIES: A New Musical" is produced by special arrangement with the Authors and William Morris Endeavor Entertainment, 1325 Avenue of the Americas, New York, NY 10019

ACT seasonal support provided by:



A Contemporary
Theatre Foundation

The Andrew W. Mellon Foundation

Eulalie Bloedel Schneider
Artists Fund



THE SHUBERT
FOUNDATION INC.

MARLEEN AND KENNY ALHADEFE, 5TH AVENUE PRODUCING PARTNER



Restaurants Unlimited is a preferred restaurant
of The 5th Avenue Theatre.



Safeco Insurance and US Bank are co-sponsors
of The 5th Avenue's 2010-2011 season.



The Olympic and Inn at the WAC are the preferred hotels
of The 5th Avenue Theatre.



Growing older?



Friends can help.
So can furniture
from Masins.

Come visit us today and let one of
our talented designers help with
your plans for your home.

Helping to make Northwest homes
beautiful for four generations

MASINS

FINE FURNISHINGS & INTERIOR DESIGN

220 2nd Avenue South, Seattle | 206.622.5606

10708 Main Street, Bellevue | 425.450.9999

700 110th Avenue N.E., The Bravern, Bellevue | 425.453.1300

www.masins.com

est. 1927

Cast

(in alphabetical order)

CAYMAN ILIKA Kathy
JENNIFER SUE JOHNSON Joanne
BILLIE WILDRICK Mary
ABBY DUKE POLLARD Understudy

SCENE 1: Fall 1963. A small town in Texas.

SCENE 2: Spring 1968. A sorority house in Dallas.

SCENE 3: Summer 1974. A penthouse terrace in Manhattan.

SCENE 4: Winter, years later. A small town in Texas.

This performance runs 90 minutes. There will be no intermission.

CREATIVE TEAM

DAVID ARMSTRONG Direction & Musical Staging
IAN EISENDRATH Music Director
MATTHEW SMUCKER Scenic Designer
CATHERINE HUNT Costume Designer
TOM STURGE Lighting Designer
KEN TRAVIS Sound Designer
JEFFREY K. HANSON Stage Manager
JR WELDEN Assistant Stage Manager
ERIC JENSEN Assistant Director
BRENDAN PATRICK HOGAN Assistant Sound Designer
SUSANNAH SCOTT Assistant Lighting Designer
FAITH SEETOO Associate Music Director
ALYSSA KEENE Dialect Coach

The Actors and Stage Managers are members of Actors' Equity Association, the Union of
Professional Actors and Stage Managers in the United States.

Audience members are cordially reminded to silence all electronic devices such as cell
phones, watch alarms and pagers prior to the performance.

All forms of photography and the use of recording devices are strictly prohibited.

Catering sponsorship for *Vanities* provided by:

Tony's
Events & Catering

Musical Numbers

"The dictionary meaning of vanity: 1) The quality of being personally vain, excessive pride in one's own appearance, qualities, gifts and achievements. 2) Emptiness, unreality, sham, folly, want of real value. 3) A dressing table.

The musical *Vanities* means all of these things."

<i>Mystery</i>	All
<i>I Don't Wanna Miss A Thing</i>	All
<i>An Organized Life</i>	All
<i>I Can't Imagine</i>	All
<i>Mystery II</i>	All
<i>An Organized Life (1968)</i>	All
<i>Fly Into The Future</i>	Mary
<i>Cute Boys With Short Haircuts</i>	Kathy
<i>Let Life Happen</i>	All
<i>Mystery III</i>	All
<i>The Same Old Music</i>	Joanne
<i>An Organized Life (1974)</i>	Kathy
<i>The Argument</i>	All
<i>Friendship Isn't What It Used To Be</i>	All
<i>Mystery IV</i>	All
<i>Letting Go</i>	All

ORCHESTRA

Conductor/Keyboard – Faith Seetoo

Flute/Oboe/Clarinet/Bass Clarinet/Soprano Sax/Alto Sax/Tenor Sax – Dave Long

Electric Guitar/Acoustic Guitar/Banjo – Greg Fulton

Drums/Percussion – Chris Monroe

Electric Bass/Acoustic Bass – Dave Pascal

ADDITIONAL MUSIC STAFF

Copyist – Kaye-Houston Music

Keyboard Programmer – Randy Cohen

Music Librarian/Asst. to Musical Director – Dane Andersen

Celebrating Life's Great Performances

COMPLETE FUNERAL, CEMETERY
AND CREMATION SERVICES

Ballard • Capitol Hill • Federal Way • SeaTac



BONNEY-WATSON

Celebrating Lives Since 1868

www.BonneyWatson.com



FRAN'S
CHOCOLATES

The Classic Northwest Favorite



1325 1st Avenue, Seattle
206.682.0168

2626 NE University Village Street, Seattle
206.528.9969

10036 Main Street, Bellevue
425.453.1698

franschocolates.com

Cosmetic Eyelid Surgery

Your eyes say a lot about you and they usually are the first feature people notice. A Fresh alert look can be restored with a procedure called blepharoplasty. This procedure on the upper lids can serve to lift the eyelids and reduce the frown lines.

The lower lid bags can be treated without a skin incision and the wrinkles can be reduced using lateral eyelid tightening.

Dr. Tim Carey is an oculoplastic surgeon with specialized training in both ophthalmology and plastic surgery. He is the team ophthalmologist for many of the area's professional and college sports teams.

Call today for more information or a free consultation.



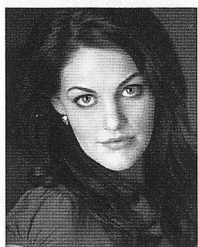
Free
Consultation!

Tim Carey, M.D.

Eye Clinic of University Village

5116 25th Ave NE, Seattle 206-522-2500 • www.drccarey.com

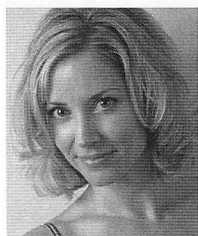
Who's Who



CAYMAN ILIKA

(Kathy) is overjoyed to be a part of the *Vanities* family! Ilika has previously appeared with The 5th Avenue in *Buddy: The Buddy Holly Story* and *Candide*. Other recent projects include: Julie in

Show Boat (Footlight Award) and Anastasia in *The Gypsy King* with Village Theatre, Maria in *The Sound of Music* with Lyric Light Opera, and Patsy in *Always... Patsy Cline* with Centerstage at ACT. Cayman works locally as a session vocalist with Demo My Song, and also performs frequently as a concert artist. She is happily married to the handsomest man in the whole wide world. Visit her on the web at www.caymanilika.net



JENNIFER SUE JOHNSON (Joanne)

Recent acting work includes Lucy Schmeeler in *On the Town* at The 5th Avenue, and Guttrune in *Das Barbecü* at ACT. Other roles include Columбина in *Pero* at

Seattle Children's Theatre, a co-production with Speeltheater of Holland, and Constance in *The Three Musketeers* at Seattle Repertory Theatre. For Seattle Shakespeare, she played Lady Macbeth in *Macbeth*, Desdemona in *Othello*, Viola in *Twelfth Night*, Elise in *The Miser*, among others. Johnson is a longtime Book-It company member, originating roles in *Broken for You*, *House of the Spirits*, *Lady Chatterley's Lover* (Footlight Award), *Pride and Prejudice* and *Ethan Frome*. Also *Pygmalion*, at Seattle Repertory Theatre, *Voice of the Turtle*, at Tacoma Actor's Guild, *Noises Off* and *Diary of Anne Frank*, at Village Theatre, and *I Was a Rat*, *Big Friendly Giant*, *Into the West* (Footlight award), and more at Seattle Children's Theatre. Up next: *In the Next Room*, or *The Vibrator Play* at ACT. Love to Russ and Mia.



BILLIE WILDRICK

(Mary) Wildrick was last seen at ACT as a Valkyrie. She has trodden the boards at the 5th Avenue Theatre as a hippie, a groupie, a virgin, a shimmy girl, one of 2 sisters from

Ohio, a stewardess, a showgirl, a teeny-bopper, a princess, an artist's model, a grandmother, 2 maids, a Daffodil, the blonde quarter of an intrepid radio quartet and a nymphomaniacal anthropologist. Elsewhere, she has been spotted as a pink bird, a lady milliner, a Von Trapp, a sassy waitress, a prisoner of the inquisition, a sultry torch-singing femme fatale and Madonna. Up next, she will be a chorine with the sniffles in *Guys and Dolls* at The 5th Avenue Theatre and teaching a new class at Freehold called Acting Through Music. She would like to dedicate her performance to Mary and Jen, the women who have always pushed her to grow, told her the truth and loved her without condition. www.billiewildrick.com

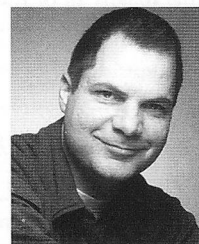


ABBY DUKE

POLLARD (Understudy) is thrilled to be working with ACT and The 5th Avenue in this great show with such talented ladies! Pollard was most recently seen in Village Theatre's *Anne of Green Gables* as

Josie Pye. New York/Tours: *Go Diego, Go Live!* (Nickelodeon), *Paisley Sister's Christmas Special* (NYMF), *Buried Alive* (Triad Theatre). Village Theatre Originals: *Snapshots*, *Lincoln In Love*, *The Last Starfighter*, *The Cuban and the Redhead*. Contemporary Classics: *New Voices*, ...*Spelling Bee* (Bumbershoot). Pollard teaches and directs at Studio East where she works with kids of all

ages bringing the joy of theatre to schools and homeschoolers around town. She also has a BFA from The Boston Conservatory. Love to her family and fiance, Erik.



DAVID ARMSTRONG

(Director/Musical Staging) Executive Producer and Artistic Director at The 5th Avenue; served as the Theatre's Producing Artistic Director from 2000 through 2009.

During this time he directed acclaimed productions of *Candide*, *Hello, Dolly!*, *Mame*, *White Christmas*, *Sweeney Todd*, *Hair*, *A Little Night Music*, *The Secret Garden*, *Company*, *The Rocky Horror Show*, *Pippin*, *Yankee Doodle Dandy!* and *Anything Goes*. He also established The 5th as a national leader in the development and production of new musicals. As a producer, director, writer and choreographer his work has been seen in New York, Los Angeles and many leading regional theaters including The Kennedy Center, Ordway Center, Cincinnati Playhouse, Pittsburgh Civic Light Opera, Repertory of St. Louis, Ford's Theater and Paper Mill Playhouse. From 1990-1995, he served as the Artistic Director of The Cohoes Music Hall in upstate NY. His writing includes the books for the musicals *The Wonder Years* (winner of seven LA Drama-Logue Awards), *Gold Rush!* and *Yankee Doodle Dandy!*

JACK HEIFNER (Playwright) Heifner is best known for the play of *Vanities*, which ran for five years in New York and became of the longest running plays in off-Broadway history. He is also the author of over thirty plays including *Patio/Porch*, *Natural Disasters*, *Running on Empty*, *Bargains*, *Jumping For Joy*, *Boys' Play*, *Home Fires*, *Heartbreak*, *Comfort and Joy*, *The Lemon Cookie*, *Dwarf Tossing* and other works produced in New York, Los Angeles and theatres around the world. Heifner has written the book to six other musicals, including *Leader of the Pack* on Broadway. He has also written for television and film. Heifner was born in Corsicana, Texas and lives in New York City. He is currently playwright in residence at Stephen F. Austin State University in Nacogdoches, Texas, where he teaches one semester each academic year. He would like to thank Elaine Devlin for her expert guidance and Ronald Agius for his wonderful love and support.

DAVID KIRSHENBAUM (Composer and Lyrics) Kirshenbaum has penned the music and lyrics for numerous productions including the off-Broadway musical *Summer of '42* (book by Hunter Foster), *Party Come Here* (book by Daniel Goldfarb), and *Yes, Virginia, There Is a*

TEATRO ZINZANNI

"THIS CITY'S HOTTEST TICKET."
- The New York Times

206.802.0015

3RD AVENUE NORTH | SEATTLE CENTER'S & MERCER STREET | THEATRE DISTRICT

WWW.ZINZANNI.ORG

Thanks to our sponsors:
T-Mobile Caffè Umbria
Davis Wright Tremaine Kimpton Hotels

Who's Who

Santa Claus (book by Myles McDonnell), which was first seen at Mill Mountain Theatre, and has been performed regionally since then at the holiday season. *Vanities – A New Musical*, his adaptation of the long-running hit play (book by its original writer, Jack Heifner), won the 2006 San Francisco Theatre Critics Circle Awards for Best Musical and Best Score in its first production at TheatreWorks in California. His work has been produced at many other theatres nationwide, among them Goodspeed Musicals, Round House Theatre, The York Theatre Company, Casa Manana, Seacoast Rep, and Dayton's Victoria Theatre. He was also a contributing songwriter to the childrens' TV series *Johnny and the Sprites* on The Disney Channel. A native of New York City, he has a Bachelor of Musical Arts degree from the University of Michigan.

IAN EISENDRATH (*Music Direction and Supervision*) is the Resident Music Supervisor at The 5th Avenue. 5th Avenue credits include: *On The Town*, *Joseph and the Technicolor Dreamcoat*, *Sunday in the Park with George*, *West Side Story*, *Sweeney Todd*, *Into the Woods*, *Company*, *Cabaret* and *Miss Saigon*. He is the music director and music supervisor of the new musical, *A Christmas Story*, which had its premieres at the Kansas City Rep and The 5th Avenue. Other credits include: *Cabaret* at Theatre Under The Stars in Houston, American Musical Theatre of San Jose and the Ordway Center, and three seasons of *The Nutcracker* at Pacific Northwest Ballet. He is currently serving as the music director for several new musicals in development at the Banff Centre in Alberta, Canada. Eisendrath graduated from the University of Michigan with a degree in conducting musical theater.

MATTHEW SMUCKER (*Scenic Designer*) is pleased to return to ACT where his work has included designs for *Yankee Tavern*, *The Trip to Bountiful*, *Rock 'n' Roll*, *Below The Belt*, *Jekyll & Hyde*, *Eurydice*, *Fathers and Sons*, *The Women*, *The Clean House*, *The Pillowman*, *Wine in the Wilderness*, *Flight*, *Bach at Leipzig*, *The Ugly American*, and *Jumpers*. Smucker's designs have appeared locally at The 5th Avenue Theatre, Seattle Repertory Theatre, The Intiman Theatre, Seattle Children's Theatre, New Century Theatre Company, Book-It, The Empty Space, Village Theatre, and Tacoma Actors Guild, and nationally at Arizona Theatre Company, Portland Center Stage, San Jose Rep, Kansas City Rep, and Childsplay Theatre. Smucker was a founding ensemble member of Deus X Machina and a company member and resident designer with Annex Theatre. Smucker is an adjunct faculty member at Seattle University and received his MFA from the UW School of Drama.

SEATTLE SYMPHONY

LUDOVIC MORLOT, MUSIC DIRECTOR

2011-2012 SEASON

A New Season *with* LUDOVIC MORLOT

3-Concert packages start at \$48

SEPTEMBER

Morlot Conducts
"The Rite of Spring"

JANUARY

Joshua Bell
with Seattle
Symphony

FEBRUARY

Itzhak Perlman
with Seattle
Symphony

MARCH

Renée Fleming
with Ludovic
Morlot and
Seattle
Symphony

JULY

The Planets –
An HD Odyssey

**SUBSCRIBE
TODAY!**
and have access
to these amazing
concerts!

206.215.4747 | SEATTLESYMPHONY.ORG

Who's Who

CATHERINE HUNT (*Costume Designer*) is very excited to be back at ACT Theatre. Previous ACT productions include *The Lieutenant of Inishmore* directed by Kurt Beattie, *Stuff Happens* directed by Victor Pappas, and *Bach at Leipzig* directed by Kurt Beattie. Hunt has designed productions of *The Neverending Story*, *The Sorcerer's Apprentice* and *Sleeping Beauty* for Seattle Children's Theatre. She designed *Little Women* last season for Village Theatre in Issaquah and has done numerous other local productions including *The Grapes of Wrath* and *Crowns* for Intiman and *The Masked Ball* and *Fidellio* for Seattle Opera. Hunt has won a San Diego Theatre Critics Circle Award and a Los Angeles Drama-Logue award for her designs of Anne Bogart's production of *The Women*. She is also a National Endowment of the Arts-Theatre Communications Group award winner. Hunt has designed the costumes for the award winning computer game *Riven*. She holds a MFA from The University of California San Diego and has lectured at both Cornish College of The Arts and The University of Washington.

TOM STURGE (*Lighting Designer*) is thrilled to be returning to ACT and continuing his collaboration with director David Armstrong. Previously at ACT: *The MOJO* and *the SAYSO*. Recent productions: *Candide* at The 5th Avenue

Theatre (with director David Armstrong), *On the Town* at Papermill Playhouse and The 5th Avenue Theatre, *The Full Monty* at the Village Theatre. Current projects: *Guys & Dolls*, *Oklahoma!* at The 5th Avenue Theatre, *Iron Curtain* at the Village Theatre. Broadway: *Those Were the Days* at the Edison and *Gypsy Passion* at the Plymouth. Off-Broadway: Public Theatre, Blue Light, Circle Rep, Circle in the Square, Irish Arts, Lucille Lortel, La Mama ETC. Dance: Alvin Ailey American Ballet and Ballet Hispanico. Regional: Huntington Theatre, Papermill Playhouse, Alliance Theatre, Pittsburgh Public, Goodspeed Playhouse, Cincinnati Playhouse, AMTSJ, Studio Arena Buffalo, and the Walnut Street in Philadelphia. Opera: Spoleto Festival and Boston Lyric. National Tours: *La Cage aux Folles*, *Dreamgirls*, *Miss Saigon*, *Go Diego Go*, and *Dora the Explorer*. Sturge lives in Issaquah with his wife Istara and son Dylan. *LTSLighting.com*.

KEN TRAVIS (*Sound Designer*) Broadway Designs: *Memphis*, *The Three Penny Opera*, *Barefoot in the Park*, *Steel Magnolias*. The 5th Avenue Theatre: *A Christmas Story*, *Candide*, *White Christmas*, *Sunday in the Park with George*, *Hello, Dolly!*, *Memphis*, *Seven Brides for Seven Brothers*, *Mame* and *Into the Woods*. Numerous regional theaters and companies

including La Jolla Playhouse, LA CTG, Seattle Rep, Guthrie Theater, Dallas Theater Center, McCarter Theater, Playwrights Horizons, The New Group, NYSF Public Theater, CSC, Signature Theater NYC, SoHo Rep, Vineyard Theater, The Civilians, Mabou Mines and festivals across Europe and the USA. When not designing theater, Travis is a Front Of House and monitor engineer for rock bands and groups across the globe.

BRENDAN HOGAN (*Assistant Sound Design*) is the Staff Sound Designer at ACT. Designs for ACT include *Dr. Jekyll & Mr. Hyde*, *Below the Belt*, *Rock & Roll*, *Das Barbecü*, *The Female of the Species*, *Yankee Tavern* (Gregory Award nomination), *The Lady With All The Answers* and *The Lieutenant of Inishmore*. Other designs and compositions for stage include *Mr. Marmalade*, *God's Ear*, *Titus* (The Seattle Times' Footlight Award), *Neighborhood 3*, *Requisition of Doom* and *RoboPop!* (Gregory Award nomination) at Washington Ensemble Theatre; *Demonology* and *The NEXUS Project* at Next Stage; *Two By Pinter* at Shadow & Light; *The River Why* at Book-It Repertory Theatre; *Romeo & Juliet*, *Carthaginians*, *The Island of Slaves*, *Melancholy Play* and *The Hairy Baby* at Seattle University and *Chamber Cymbeline* at Seattle Shakespeare Company. Brendan performs regularly at bars

2011^{at} ACT

Intrigue. Power. Passion. (and Fun!)

Northwest Premiere!

Vanities: A New Musical

book by Jack Heifner
music & lyrics by
David Kirshenbaum
FEB 4 - MAY 1

The Prisoner of Second Avenue

by Neil Simon
APR 29 - MAY 29

World Premiere!

Pilgrims Musa and Sheri in the New World

by Yussef El Guindi
JUN 17 - JUL 17

In the Next Room, or the vibrator play

by Sarah Ruhl
JUL 29 - AUG 28

Mary Stuart

by Friedrich Schiller
adapted by Peter Oswald
SEP 9 - OCT 9

World Premiere!

Double Indemnity

by David Pichette and
R. Hamilton Wright
OCT 21 - NOV 20

Subscriptions on sale now!
Single tickets on sale February 15th!

(206) 292-7676 | www.acttheatre.org | 700 Union Street, Downtown Seattle

Who's Who

and clubs across the Northwest with Miss Mamie Lavona the Exotic Mulatta and her White Boy Band and The Bad Things. He is married to actress Samara Lerman.

JEFFREY K. HANSON (Stage Manager)

Beginning his 22nd season at ACT, Hanson has stage managed more than 50 shows including *The Lieutenant of Inishmore*, *Rock-n-Roll*, *Das Barbecü*, *The Women*, *Stuff Happens*, *The Pillowman*, *Mourning Becomes Electra*, *Fuddy Meers*, *A Skull in Connemara*, *Quills*, *Laughter on the 23rd Floor*, *The Gospel at Colonus*, *Halcyon Days*, *The Revengers' Comedies* and *Lloyd's Prayer*. At The 5th Avenue Theatre, he has been production stage manager for *Candide*, *Irving Berlin's White Christmas*, *Hello Dolly!* and *Mame*. He has stage managed at Seattle Repertory Theatre (*Metamorphoses*, *The Cider House Rules*, *Parts I and II*), Seattle Children's Theatre, Intiman, and Arizona Theatre Company.

JR WELDEN (Assistant Stage Manager)

has stage managed *The Lady With All the Answers*, *The Female of the Species*, *Eurydice*, *A Marvelous Party*, *Souvenir*, *The Underpants*, *Mitzi's Abortion*, *Miss Witherspoon*, and *A Christmas Carol* at ACT. For 10 seasons, he staged managed at Intiman Theatre on many productions, including *The Grapes of Wrath*, *The Mystery of Irma Vep*, *The Dying Gaul*, *The Servant of Two Masters*, *Nickel and Dime* (also Mark Taper Forum, Los Angeles), *The Chairs*, *The Last Night of Ballyhoo*, *Full Gallop*, and *The Mandrake Root* with Lynn Redgrave. At Seattle Repertory Theatre, his credits include *Betrayal*, *Blue Door*, *The Chosen*, *Stop Kiss*, *Things Being What They Are*, *The Beard of Avon*, *Game of Love and Chance*, *Golden Child*, *Design for Living*, and *Pygmalion*.



The actors and stage managers employed in this production are members of Actors' Equity Association, the union of professional actors and stage managers in the United States.



The Director and Choreographer are members of the Society of Stage Directors and Choreographers, Inc., an independent national labor union.



United Scenic Artists represents the designers and scenic painters for the American Theatre.



Scenery, stage and costume work is performed by employees represented by I.A.T.S.E. Locals number 15, 488 and 887.



Musicians playing in this performance are represented by the American Federation of Musicians of the United States and Canada, Local 76-493, AFL-CIO/CLC

5TH AVENUE THEATRE

DISNEY PREMIERE!

TONY® AWARD WINNING!

BROADWAY!

MY FUNNY VALENTINE:
BROADWAY'S GREATEST LOVE SONGS
FEB 12-13

VANITIES
A NEW MUSICAL
FEB 4-MAY 1
Presented at ACT- A Contemporary Theatre

NEXT TO NORMAL
A THRILLING NEW MUSICAL
FEB 22-MAR 13

ALVIN AILEY
MARCH 25-27

9 TO 5
THE MUSICAL
APR 5-APR 24

GUYS & DOLLS
MAY 12-JUNE 5

ALADDIN
JULY 4-JULY 31

ORDER ONLINE AT 5THAVENUE.ORG
OR CALL (206) 625-1900

THE 5TH AVENUE THEATRE
CELEBRATING 30 YEARS

2010-2011 SEASON CO-SPONSORS:

Safeco Insurance

US Bank

5thavenue.org
(206) 625-1900
1308 5TH AVE DOWNTOWN SEATTLE
GROUPS: (888) 625-1418

ACT Ongoing Support



**A Contemporary Theatre
Foundation**



JPMORGAN CHASE & CO.



**Eulalie Bloedel Schneider
Artist Fund**



**NESHOLM FAMILY
FOUNDATION**



**THE PAUL G. ALLEN
FAMILY foundation**
CELEBRATING 20 YEARS



John Graham Foundation

Special Fund Donors

ACT Endowment Fund Donors

*ACT's endowment is administered by
A Contemporary Theatre Foundation.*

Buster & Nancy Alvord
Joan & Larry Barokas
Michael Corliss-Investco
Katharyn Alvord Gerlich
Becky & Jack Benaroya
Charles Blumenfeld & Karla Axell
The Ewert Family
Bruce & Dawn Goto
William Randolph Hearst Endowed Fund
for Education & Outreach Programs
Kreielsheimer Remainder Fund
Doug & Nancy Norberg
Sally Pence
Katherine & Douglass Raff
Brooks & Suzanne Ragen
Herman & Faye Sarkowsky
David E. & Catherine E. Skinner
Kayla Skinner
Estate of Stuart Smailes
David & Joyce Veterane
The Peg & Rick Young Foundation

NEW WORKS FOR THE AMERICAN STAGE – A Special Thanks to ACT's Commissioners

*ACT's New Works for the American
Stage commissioning program attracts
commissioners who want to come in direct
contact with the creative process. Donors get
to know leading playwrights and hear their
earliest drafts, watching as ideas become
scripts. Our commissioners are venture
capitalists of new ideas, and we commend
their bravery and commitment to new work.*

Becky's New Car by Steven Dietz
*Commissioned by Charlie Staadecker in
honor of Benita Staadecker*

Hell Leaves Odessa by Julie Marie Myatt
*Commissioned by Art Wahl in honor of
Eva Wahl*

How to Remove Blood from a Carpet
by Laura Schellhardt
Commissioned by Paul and Paula Butzi

TITLE TBA by Jason Grote
*Commissioned by Gian-Carlo and
Eulalie Scandiuzzi*

Maggie Cassidy by Chris Jeffries
*Commissioned by Dennis Forsyth
in honor of Elaine Spencer*

The Final Days of Negro Ville by
Keith Joseph Adkins
*Commissioned by Gian-Carlo and
Eulalie Scandiuzzi*

Special Thanks

ACT gratefully acknowledges the following for their contributions to this production and season:

Keith Johnsen, Daqopa Brands LLC

Moby's Restaurant

Seattle Children's Theatre

Morgan Rowe

Alysan Bedford

Chris Ensweiler

Nicole Fierstein

Daniel Guttenberg

David Hsieh

Gretchen Krich

Maggie Lee

AJ Epstein

Seattle Repertory Theatre

ACT Community Partners

ACT gratefully recognizes the following corporate, foundation, and government agencies for their generous support of our 2010 programs. Without such tremendous community support, ACT would not be able to offer outstanding contemporary theatre, in-school educational programming, or community based outreach.

This list reflects community partners as of August 1st, 2010.

EXECUTIVE UNDERWRITERS

(\$100,000+)

ArtsFund

SEASON SPONSORS

(\$50,000 - \$99,999)

A Contemporary Theatre Foundation
The Boeing Company
Eulalie Bloedel Schneider Artists Fund
Office of Arts & Cultural Affairs, City of Seattle
The Shubert Foundation, Inc.

PRODUCING PARTNERS

(\$25,000 - \$49,999)

4Culture
Amazon.Com Inc.
John Graham Foundation
JPMorgan Chase Foundation
Nesholm Family Foundation
The Paul G. Allen Family Foundation
PONCHO
Washington State Arts Commission

PERFORMANCE PARTNERS

(\$10,000 - \$24,999)

Ballinger Family Foundation
Columbia Crest Winery*
Continental Airlines*
Elizabeth George Foundation
Harvest Foundation
Merrill Gardens
National Endowment for the Arts
The Seattle Foundation
Tuxedos & Tennis Shoes*
Washington Athletic Club*
Wells Fargo Advisors
The Peg & Rick Young Foundation

STAGE PARTNERS

(\$5,000 - \$9,999)

Apulent Catering and Special Events Company*
Norman Archibald Charitable Foundation
The Daily Grill*
Graham & Dunn
Joanie's Catering*
Responza*
Tony's Events & Catering*

BENEFACTORS

(\$1,000 - \$4,999)

AC/R Services, LLC*
Alaskan Copper & Brass Company
Beim Foundation
Bill Speidel Enterprises
City Hardware*
Consolidated Restaurants, Inc.*
Epicenter Fitness*
Fales Foundation Trust
Horizons Foundation
Marquis Jet Partners
MCSB Inc.
Moby's Restaurant*
Pacific Place
Pike Brewing Company*
Wyman Youth Trust

MEDIA PARTNERS

KING-FM
KCTS 9

*Support provided through in-kind contributions

ACT – A Contemporary Theatre

Kreielsheimer Place
700 Union St.
Seattle, WA 98101

Administrative Office: (206) 292-7660

Development: (206) 292-7660 x1321

Ticket Office

In person: on performance days, the ticket office is open from noon until show time.

Closed Mondays and major holidays.

Phone: (206) 292-7676, Tue.-Sun.,
noon – 7:00 p.m.

E-mail: service@acttheatre.org

Online: www.acttheatre.org



A Contemporary Theatre

The ACT Legacy Society

honors those who remember

ACT in their wills or

other estate plans. Legacy

Society members ensure ACT's ongoing tradition of presenting the best of contemporary theatre for future generations. Even persons of modest means can make significant future gifts by using tax-advantaged estate and financial planning techniques. Notify ACT of your arrangements by calling (206) 292-7660 ext. 1321.

ACT Circle of Donors

ACT would like to recognize and thank all of the individuals who have made contributions to A Contemporary Theatre. The Circle of Donors is invaluable to the success of our mission, ensuring a nurturing environment for the celebration and development of contemporary theatre. Without the generous support of the individuals in the ACT Circle, none of this would be possible.

The following list reflects the sum of pledges and gifts made to the Annual Producing Fund by Donors in the ACT Circle between November 1, 2009 and December 31, 2010.

\$100,000+

Mrs. Nancy Alvord
Kathryn Alvord Gerlich
Eulalie M. & Gian-Carlo Scandiuzzi

\$50,000 – \$99,999

Chap & Eve Alvord
Gladys Rubinstein
Virginia & Bagley Wright
Anonymous

\$35,000 – \$49,999

Kurt Beattie & Marianne Owen
Jean Burch Falls
Linda & Brad Fowler

\$20,000 – \$34,999

Linda Brown & Larry True
Paul & Paula Butzi
Chuck Sitkin
Anonymous

\$15,000 – \$19,999

Becky & Jack Benaroya
Michael & Leslie Lebeau
Douglas & Nancy Norberg
Linda & George Ojemann
Katherine & Douglass Raff
Brian Turner & Susan Hoffman

\$12,500 – \$14,999

Allan & Anne Affleck
Barry & Colleen Scovel
Elaine Spencer & Dennis Forsyth
Vijay & Sita Vashee

\$10,000 – \$12,499

Allan & Nora Davis
James Degel & Jeanne Berwick,
Berwick Degel Family Foundation
Daniel D. Ederer & Takayo Minakami
Gregory & Diane Lind
Carrie D. Rhodes
Don & Colleen Stevens
Robert & Shirley Stewart
Anonymous

\$7,500 – \$9,999

Joan & Larry Barokas
Laurie Besteman & Jack Lauderbaugh
Eliza Flug
Linda & Ted Johnson
Grace Nordhoff & Jonathan Beard
Herman & Faye Sarkowsky
John Siegler & Alexandra Read, MD
David & Shirley Urdal
Clifford & Karen Webster

\$5,000 – \$7,499

Sheena Aebig
Daniel Alexander

Jane & Peter Barrett
Lance Becker & Karen Roberts
Sonya & Tom Campion
Colin Chapman
Steven & Judith Clifford
Jane & David R. Davis
Betsy & Charles Fitzgerald
Gilman Family Foundation
David & Rosalie Holcomb
Deborah Killingier
Petra Franklin Lahaie
Marcella McCaffray
Louise J. & Samuel B. McKinney
McKibben/Merner Family Foundation
David E. & Catherine E. Skinner
Jean Viereck & Robert Leventhal
Jean Walkinshaw
Herbie Weisse
Marjory Willkens
Marcia & Klaus Zech
Anonymous (2)

\$3,500 – \$4,999

Corinne A. Campbell
Theodore & Patricia Collins
Salil & Rashmi Dave
Thomas & Christine Griesa
James & Barbara Heavey
Stu & Sandy Jacobson
Katherine Ann Janeway & H.S. Wright
III
William & Sandy Justen
Jane W. & James A. Lyons
Edward Miesen
Kelly Miller & Ruthann Stolk
Dr. Arnie & Judy Ness
Debra Sinick & David Ballenger
Anonymous

\$2,000 – \$3,499

Bill & Janette Adamucci
Richard & Constance Albrecht
Kermit & Danna Anderson
Melinda & Walter Andrews
Susan & Lauren Anstead
Christine & Perry Atkins
Stewart Ballinger*
Heidi Beck
Peter & Fran Bigelow
Betty Bottler
Kimberly & Kyle Branum
Ronald & Leila Cathcart
D.T. Challinor
Grad & Susan Conn
Patricia Daniels & Bill Kuhn
Kathy & Don DeCaprio
Lori Eickelberg
Kevin Wilson & Emily Evans
Richard & Mary Beth Gemperle
Natalie Gendler
Lawrence & Hylton Hard
Melissa Haumerson
Richard Hesik & Barbara Johns

Stephanie M. Hilbert
John Hill
Gary & Parul Houlahan
Heather & Grady Hughes
Lura & David Kerschner
Josef Krebs
Steven & Anne Lipner
Theodore & Mary Ann Mandelkorn
Pamela Burns McCabe
Mark & Susan Minerich
Mardi Newman
The Nordhoff Family
Valerie D. Payne
Brooks & Suzanne Ragen
Jason Richert
Jo Anne & Donald Rosen
H. Stewart Ross
Eric and Margaret Rothchild
Bill and Rae Saltzstein
Sean Shanahan & Kathleen McGill
Michael C. Shannon
Carol & Ron Sperling
Dana M. Stout
Samuel & Althea Stroum Foundation
Tamzen Talman
Taucher Family Foundation
Mark & Arlene Tibergien
Annette Toutonghi & Bruce Oberg
Jim & Kathy Tune
Jennessa & Robert West
Diana White
The Whitsitt Family
Jane & Leonard Yerkes
Anonymous

\$1,000 – \$1,999

Mr. & Mrs. Willie C. Aikens
John Akin & Mary Stevens
Bruce & Karen Babbitt
Eric Bahn
Kendall & Sonia Baker
Victoria Bennett
Irving & Luann Bertram
Alan & Sally Black
Susan and Jeff Bland
Charles Blumenfeld & Karla Axell
Cleve & Judith Borth
Ben & Marianne Bourland
Matthew Brantley
Beth & John Brennan
Nancy Buckland & John Searce
Dr. William Calvin & Dr. Katherine
Graubard
Donald Cavanaugh
Ms. Cindy Chin
Linda & Randy Clark
Kathy Clark
Judy & Bob Cline
Nicole Boyer Cochran
Chris Curry
Darrel & Nancy Dochow
Joanne R. Euster
Jeannie Falls

Jim & Gretchen Faulstich
Carl & Jan Fisher
Denise & David Foster
Martin Gibbins & Paula Crockett
Gordon W. (Skip) & Midge Gilbert
Boyd & Ann Givan
Jeff & Kelly Greene
Charles & Lenore Hale
Dr. Eugene & Rena Hamburger Ttee
Valerie Hamrick & Randall Whiteside
Edgar Hansen
Dr. Benson & Pamela Harer
Hashisaki/Tubridy Family
Kellanne Henry
Stephen B. Hilbert
Sara Comings Hoppin
Joseph & Linda Iacolucci
Judith Jesiolowski & David Thompson
Lew & Sonia Johnson Fund
Lisa & Norman Judah
Margot Kenly & Bill Cumming
Asuman Kiyak
Karen Koon & Brad Edwards
Joanne M. Kuhns
George & Linda Lamb
Shannyn & Chul Lee
Rob Lehman & Christopher Mathews
Larry & Phyllis Loeb
Laura Lundgren
Alice Mailloux
Andrew & Cynthia Marin
Liz & Lyle Martin
Barbara Martyn
Ann McCurdy & Frank Lawler
Frances Mead
Lauren Mikov
Michael & Sarajane Milder
Terry Miller
Dayle Moss & David Brown
Pam Mulkern
Bill & Mary Ann Mundy
Nadine & John Murray
James Nichols
Kristin Olson
Nancy Pearl
Gregg & Shelley Percich
Douglas James Perry
Mary Pigott & Roger Giesecke
Stuart Platt & Melanee Daniels
Alan Rabinowitz
Ann Ramsay-Jenkins
Catherine & Thurston Roach
Marci Wing & Jeff Robbins
Evelyne Rozner & Matt Griffin
Barbara Sando
John Saul
M. Darrel & Barbara Sharrard
Anne & Langdon Simons
Charles & Benita Staadecker
Sam & Janet Stanley
Garth & Drella Stein
Kim Stindt & Mark Heilala
Franklin & Stephanie Thoen
Paul G. & Mary Lou Dice Vibrans

ACT Circle of Donors

Chris & Tory Visser
Renée Salant & Sam Weis
Nathan Weisman
Dr. Sheree Wen
Merica Whitehall
Scott & Shirley Wilson
William & Jennifer Woyski
Ann P. Wyckoff
Anonymous (9)

\$500 – \$999

Charles & Lynette Ainslie
Tom Alberg & Judi Beck
Marcia Engel
Jane W. Carrier
Tom Clement
Jane & Brian Andrew
Basil & Gretchen Anex
Carolyn Bechtel
John Blackman
Thomas Bleakney & Margaret Stanley
Stanley & Barbara Bosse
Jan Brucker & Lauren Barber
Clara Bryan
Carl Bunje & Patricia Costello
Alyssa C. Byer
John & Arlene Carpenter
Steve & Midge Carstensen
Tony & Margaret Catanzariti
Aline & Dennis Caulley
Clark Family Charitable Fund
Arian Colachis and Ian Glass
Sue & Robert Collett
Zan & Stephan Collier
Richard & Minnie Collins
Frank & Joan Conlon
Jack Cook
Steve Coulter
George & Carolyn Cox
Eiron & Patricia Cudaback
Lois & King Curtis
Barb & Phil Cutler
Donald Dally
Ruth Darden
Joel Deaguero
Dottie Delaney
Ron & Jan Delismon
Ben & Kathy Derby
Michelle Lorenz
Deborah and Dennis DeYoung
Paula Diehr & Frank Hughes
The Dramatists Guild Fund, Inc
Luella & Harold Drevecky
Allan Whitcomb & Lis Eddy
Betty M. Ederer
Gail & Shmuel El-Ad
John & Mariley Ferens
Gary H. Ferguson
Rick Freedman
Robert E. Frey
Maradel Krummel Gale
Laurie Galland
Max Gellert
Sergey Genkin
Genevra Gerhart
Pat Gervais
Mary M Gilbert
Joel & Angie Gregory
Helen Gurvich
Paul & Sheila Gutowski
Libby Hanna & Don Fleming

Erik & Evy Haroldson
Daniel & Whitney Hazzard
Marjorie K. Hemphill
Margot & Paul Hightower
Vaughn Himes & Martie Ann Bohn
Jim & Linda Hoff
Donna Holpainen
Robert Howie & Maria Milano
Susan & Philip Hubbard
Jennifer A. Huerta
Ms. Connie Hungate
Dean M. Ishiki
Joel Ivey & Sheryl Murdock
David B. Johnson
Robert Johnston
Bette Nicotri-Jones
Clare Kapitan & Keith Schreiber
Gail & David Karges
Thomas Kelly
Jane Jollineau Kennedy
Amy Faherty & Jeff Kephart
Jerry Kimball & Marjorie Raleigh
Peggy Kley
Weldon Ihrig & Susan Knox
Ginny Abramson
Greg Kucera & Larry Yocom
Lawrence Investment Group
J. Robert Leach & Vickie Norris
Jim Lobsenz & Elizabeth Choy
Mark P. Lutz
Kevin Lynch
C. Gilbert Lynn
Alex & Lynn Macdonald
Susan & Mike MacFadden
Charles & Aileen Mangham
Bill & Holly Marklyn
Tony Martello
Pam & Mo Mathews
James Taylor & Nancy E. McCraney
Nicole McHale
Joy McNichols
Gail & John Mensher
Eugene & Donna Mikov
Tom & Nancy Miller
Henry Miyoshi & Susan Woyna
Megan Moholt
Terry & Cornelia Moore
Sallie and Lee Morris
Gloria & David Moses
Zack Mosner & Patty Friedman
James Mullin
Annette & Gordon Mumford
John Narver
Sarah Navarre
Chris & B.J. Ohlweiler
Jerry Olson
Cynthia & Bruce Parks
Laird Patterson, MD
Vivian Phillips/Estate of Delphia L. Phillips
Greg & Sherre Piantanida
David Pichette
Bill & Beth Pitt
Donald Pogoloff
Steve Potert
Joan Potter
Mr. & Mrs. John Radovich
Ben and Margit Rankin
Craig & Melissa Reese
Jan & Kerry Richards
Lance & Cindy Richmond
Carole E Rush

Stephanie Ryan & Craig Fleck
Ingrid Sarapuu & Michael Anderson
Pat and Bud Schafer
Marlyn Friedlander & Gilbert Scherer
Shelley Schermer
Joe & Judy Schocken
Mike Scully
Michael K. Scully
Preston Briggs & Marya Silvernale
Dave and Karen Smith
Alan & Susan Smith
Kathleen Sneden-Cook & Jack Cook
John & Rose Southall
Ronald Spaulding
Ricarda C. Spee
Alec & Jane Stevens
Bettina Stix
Margaret Stoner & Robert Jacobsen
Cynthia Gossett & Derek Storm
Isabel & Herb Stusser
Kristen Summersby
Jeffrey A. Sutherland
Norm & Lynn Swick
Craig Tall
Ms. Lyn Tangen & Mr. Richard Barbieri
Ezra Teshome
Joan E. Thacker
Gail Thompson
Timothy Tomlinson
Kim & Ann Torp-Pedersen
Sergei Tschernisch
Tuxedos and Tennis Shoes
Janet Upjohn
Dirk & Mary Lou Van Woerden
Beverly Wagner
Mary & Findlay Wallace
Judy & Mike Waring
Scott Warrender & John Bianchi
Judith Warshal & Wade Sowers
Carol Webb & Don Holz
Howard West and Wendy Hassan
George & Colleen Willoughby
Douglas & Dianne Wills
Gerald & Holly Wilson
Susan Wolcott & George Taniwaki
R. Hamilton Wright
Melissa A. Yeager & Cory Van Arsdale
Joyce & Christian Zobel
Anonymous (8)

\$250 – \$499

Diana & Warren Aakervik
David Aggerholm & Gwendolyn Lundberg
Sue Albrecht
Sarah & Bob Alsdorf
Jerry Anches
Gilbert & Mary Jane Anderson
Sharon Anderson
Michael Anderson
Daniel & Kristie Anderson
The Armo Family
Loren & June Arnett
Robert M. Arnold
Diane & Jean-Loup Baer
Jerry & Judy Baker
Janet Bakke
Ron Baltrusis
Denise Bassett
Eric & Nicole Bayless
Marge and Dave Baylor
Ken & Lori Becker
Jim & Kathleen Bellomo
Mike & Marie Bender
Dr. & Mrs. Bensinger
Ruth and Greg Berkman
Linda Betts
John Bianchi & Scott Warrender
Dennis Birch & Evette Ludman
Gail & Randy Bohannon
John Boling
Caroline Bombar-Kaplan
Wendy Bradbury
Brian Branagan and Carissa Sanchez
Karen Brattasani & Douglas Potter
June & Alan Brockmeier
Mary Ann Brokaw
Dorothy A. Brown
Carlene Brown & Elvis Campbell
Marshall & Jane Brown
Darryl Brown-Archie
Dr. James & Donna Brudvik
Gordon Buchan
Anne Buchinski & Marc Coltrera
Nancy Hansen & James Burnell
Carol & John Burns
Peter Buser
Judith Callahan & John Van Bronkhorst
Dr. & Mrs. Sam Castillo
Joni & Paul Cervenka
Mark Chandler
Sarah & Stephen Church
Jack Clay
Clement Family Foundation
Greta Climer & Kevin Kennedy
Deborah Cohen
Jim & Jan Coleman
Susan Compatore
Judith & Thomas Connor
Loveday Conquest
Rachael Contorer
Mr Conway & Ms Williams
Kevin Cuba
John & Leslee Currie
Valerie Curtis-Newton & Kim Powell
Dan & Esther Darrow
Mr. James Deal
Paul & Sandy Dehmer
James and Amanda Devine
Daniel Dierks & Sally Avenson
Bob Donegan
Pamela & Sturges Dorrance
Kathy Dugaw
Richard Dunn
Diane Easley
Marvin Eckfeldt
Mickey & Jeanne Eisenberg
Susan Elizabeth
Debra & John Ely
A.J. Epstein
Michael Evans
Bill & Karen Feldt
Teresa Ferguson
Barbara V. Fithian
Clayton & Katherine Fleming
Mary Vinton Fleming
Mac & Charlene Fletcher
Corinne Fligner & Mark Wener
Bruce Florsheim
Shirley Frank
Eleanor & Jeff Freeman
Dick & Sharon Friel
Mr & Mrs. Phillip Frink Jr
Marcia Fujimoto
Dorothy (Dot) V Fuller
Raymond & Jeanette Galante

ACT Circle of Donors

Jane & Richard Gallagher
 Jean Garber & Clyde Moore
 Jean Gardner
 Emma Garkavi & George Inverso
 Louise Gerth
 Sylvia Gillett
 Carolyn Gleason
 Sara & Jay Glerum
 William Goldberg and Virginia Leen
 Virgina Gonzales
 Claire & Paul Grace
 Mott Greene
 Ted & Sandra Greenlee
 James & Rhonda Greer
 Bernadine & Sean Griffin
 Alexandre Grigorovitch & Vera Kirichuk
 Carl & Barbara Grimes
 Jerry & Susan Haas
 Lowell & Kathie Hagan
 Harvey Hailer
 Sharron & David Hartman
 Diana & Peter Hartwell
 Lisa Haug & Amado Shuck
 Richard & Susan Hecht
 Barbara & Randall Hieronymus
 Melissa Hines
 Christine Hoffman
 Jim & Sue Hogan
 King Holmes
 John Holt & Susan Trainor Holt
 Dr. & Mrs. John Howe
 Theresa Huard
 Art & Merri Huffine
 Gordon & Julie Hungar
 Julie & James Impett
 Toshiye Ishisaka
 Ann Janes-Waller
 Susan & Fred Jarrett
 Tom Jensen
 Peter Joyce
 Paul Kassen
 Debra Kelley
 Beverly & Otis Kelly
 Jerry Kenney
 Steven & Patricia Kessler
 Agastya Kohli
 Nancy Kuehnoel & Mark Proulx
 Jim & Jean Kunz
 Jill Kurfirst
 Bob & Janet Lackman
 Sharon Lamm
 Will & Chapple Langemack
 Max Langley
 Inge Larsen
 Paul & Linda Larson
 Paul & Jill Larson
 Rhoda A.R. & Thomas V. Lawrence
 Denise Bassett
 David & Catharine Lawson
 Craig Davis & Ellen Le Vita
 Lyn & Doug Lee
 David & Linda Leisy
 Rosemary Leong-Miller
 Gary, Jane, Jessica & Ali Lindsey
 Sylvia Lucas
 Gloria Luster
 Stephen & Ellen Lutz
 Dan & Carol Madigan
 Greg Mahugh
 Lori Malone
 Shaula & Darrin Massena
 Bonnie Matson
 Leslie & David Mattson
 Arthur Mazzola
 Kevin & Sheri McCarthy

May Louise McCarthy
 Catherine & Barry McConnell
 Samuel McCormick
 Barbara & Roger McCracken
 David & Karen McCullough
 Todd R. Looney & Lucia E. McDonald
 James & Kaaren McElroy
 Barbara & Peter McGrath
 Don McLaren & Joanne Chase
 Shawna & Lachlan McLean
 Russell Metz
 Col. Norman D. Miller
 Heath Miller
 Milliman USA
 Chuck Mitchell
 Donna M. Moniz
 Craig Montgomery & Steve Smith
 Wesley Moore & Sandra Walker
 Jennifer Moore & Andrew Scotfoldt
 Roger Morris
 Glenn & Samantha Morrissey
 Jonathan Munro
 John Naye
 Cindy & Ed Neff
 Paul & Linda Niebanck
 Dan Niles
 Craig & Deanna Norsen
 Lisa O'Brian
 Kevin O'Morrison
 Betty & Gordon Orians
 Nancy Orsborn
 Don & Helen Owens
 Sandra Pappas
 Ruth Ann Parish
 Lola Peters
 Kathleen Petrich
 Cyndie Phelps
 Judy G. Poll
 Marlene Price
 Robin Prichard
 Deb Prince & Jerry Diercks
 Bradley and Caroline Probst
 Lucy & Herb Pruzan
 Kathy Hagiwara Purcell
 Megan & Greg Pursell
 Michelle Quackenbush
 Darryn Quincey & Kristi Falkner
 Daniel & Barbara Radin
 Kathryn Raich & David Jones
 Jeff & Pat Randall
 Charles & Doris Ray
 Cecilia Paul & Harry Reinert
 Shawn Richardson
 Laurie Richardson
 Clay & Patty Richmond
 Peg Rieder
 Virginia & Thomas Riedinger
 Marilyn Robbins
 Bruce Robertson
 Nancy M. Robinson
 Ernestine Rombouts
 Patricia & David Ross
 M. Lynn Ryder Gross
 Elizabeth Ryll & Richard Stead
 Jerry Sale & Rachel Kleivit
 Marybeth & Jerry Satterlee
 Paul & Terri Schaake
 Melissa Schafer
 Gerry & Gail Schnider
 Duane & Pat Schoepach
 Karen and Patrick Scott
 Randolph & Lynn Sealey
 Roger & Marlys Seeman
 David & Elizabeth Seidel
 Thomas & Susan Shalles

Charles & Andora Sharpe
 Barbara & Steve Shaub
 Karen Shaw & Larry Holm
 Jeanne Sheldon and Marvin Parsons
 Sonia Siegel Vexler & Paul Vexler
 Keith & Teresa Simanton
 Bill & Marilyn Skelly
 John Skinner & Peggy O'Neill Skinner
 Jeff & Liz Slesinger
 Warren & Nancy Smith
 Melodee Smith
 Julie & Sam Smith
 David Spellman
 Thaddeus Spratlen & Lois Price
 Gail & Robert Stagman
 Kerrie Stewart
 Gary & Becky Streitmatter
 Tricia Stromberg
 Earl & Charlotte Sutherland
 Michael Sutherland
 Constance Swank
 Lauren H. Taft
 Bill & Pat Taylor
 Lore & Henry Tenckhoff
 I. M. Thomas
 Dennis M. Tiffany
 Arthur & Louise Torgerson
 Christopher & Mary Troth
 Carol & Jeff Waymack
 Randall Weers
 Scott & Jan Weldin
 Westbrook Family
 Joe Oates & Deb Wexler
 Leora Wheeler
 Robin Whipple
 Sarah White
 Don & Judy Wilson
 Daryl Wilson
 Barry & Peggy Witham
 William Womack MD
 Erin Wong
 Judy Woods
 James & Patricia Zettas
 Marie R. Zobrist
 Igor Zverev, Yana Solovyeva
 Anonymous (6)

Gifts in Tribute

This list reflects gifts made to ACT between November 1, 2009 and December 31, 2010 in recognition of the following people:

In memory of Ellsworth "Buster"

Alvord: Suzanne & Brooks Regan, Riddell Williams, P.S., Katherine & Douglass Raff, Nadine & John Murray

In memory of Stewart Ballinger:

Virginia & Thomas Riedinger

In memory of Mary Vinton Fleming:

Brooks & Suzanne Regan

In memory of Ken Keith: Jeffery

Keith

In memory of Robert "Bob" Paul:

Laura & William Bailey

In memory of Mr. Walter "Walt"

Walkinshaw: Jean Walkinshaw, Anonymous, Horizon House, Nadine & John Murray, The Lakeside School, Ms. Lyn Tangen & Mr. Richard Barbieri Joan & Steve Waldo, Washington State Hospital

Association, Brooks & Suzanne Ragen, Katherine & Douglass Raff, Tina Bullitt, Ed & Betty Bottler, Riddell Williams, P.S., A.M. & S. Putter, Mrs. Susan Claeys

In memory of Dr. Robert "Bob"

Willkens: Carolyn Keim, Nadine & John Murray

In honor of Joan & Larry Barokas:

Norman & Eleanor Sadis

In memory of Scott Weldin: Jan Weldin

ACT would like to thank the following Corporations for their contributions through Gift Matching Programs. We greatly appreciate the support of these institutions and their employees.

Adobe Systems Inc, Matching Gift Program
 Alaskan Copper & Brass Company
 Amgen Foundation
 Bank of America Foundation
 Bentall Capital
 Bill & Melinda Gates Foundation
 The Boeing Company
 Carillon Point Account
 CBIC Insurance
 Chevron
 CIGNA Matching Gift Program
 Citibank, N.A./Citicorp
 Eli Lilly & Co. Foundation
 Google
 Harbor Properties, Inc
 IBM International Foundation
 Key Foundation
 Merck
 Microsoft Corporation Matching
 The Prudential Foundation Matching Gifts
 Puget Sound Energy
 RealNetworks Foundation
 SAFECO Matching Funds
 Satori Software
 Sun Microsystems Foundation
 United Way of King County
 The UPS Foundation
 US Bancorp Foundation
 Verizon Foundation
 Washington Chain and Supply, Inc
 Washington Mutual Foundation
 Matching Gifts Program
 Zymogenetics Inc.

ACT works to maintain our list of donors as accurately as possible. We apologize for any misspellings or omissions. Should you find any, please contact our office so that we may correct any mistakes in future publications. Email or call Jennessa West, Associate Director of Development at jennessa.west@acttheatre.org or 206-292-7660 ext. 1330

About The 5th Avenue Theatre

The 5th Avenue is a non-profit theatre dedicated to the performing arts and supported by the community.



Photo: Jay Dodson

A beautiful and unique Seattle landmark, The 5th Avenue Theatre's breathtaking design was inspired by ancient Imperial China's most stunning architectural achievements, including the magnificent Forbidden City. Built in 1926 for vaudeville and silent pictures, The 5th Avenue reigned for decades as Seattle's favorite movie palace.

In 1979, forty-three companies and community leaders formed the non-profit 5th Avenue Theatre Association. Their goal was to restore the Theatre to its original splendor. A \$2.6 million restoration was accomplished without any public funding from federal, state or city sources.

The 5th Avenue re-opened in 1980 as Seattle's premier home for national touring shows. Nine years later, The 5th Avenue Musical Theatre Company was established to offer a mix of top-quality, self-produced musicals and the best of touring Broadway.

MISSION

The 5th Avenue Theatre Association exists to produce and present live musical theater for the cultural enrichment of the Northwest community, and to preserve, maintain and operate the historic and irreplaceable 5th Avenue Theatre.

BOARD OF DIRECTORS

	Robert A. Sexton <i>Chairman</i>	Wanda J. Herndon <i>Vice President</i>
Barbara L. Crowe <i>President</i>	Margaret C. Inouye <i>Secretary</i>	Norman B. Rice <i>Immediate Past Chairman</i>
Sterling Wilson <i>Treasurer</i>		
Kenny Alhadeff	Sarah Nash Gates	Tom Norwalk
Robert R. Braun, Jr.	John W. Hanley, Jr.	Llewelyn G. Pritchard
Stephen W. Camp	Jim Havens	David Quinn
Ken Clay	SaSa Kirkpatrick	Stephen P. Reynolds
Hope Cochran	William W. Krippachne Jr.	Kirk A. Soderquist
Grad Conn	Mark Levine	Bonnie Towne
Robert DeVinck	Dan McConnell	Colby Underwood
Mona Fandel	William J. Nichols	Tom Walsh
Gary J. Fuller		Michael Zyskowski

PAST CHAIRMEN OF THE BOARD

D.E. (Ned) Skinner (1979-81)	Donald J. Covey (1994-96)
W.J. Pennington (1981-83)	Faye Sarkowsky (1996-98)
R. Milton Trafton (1983-86)	John F. Behnke (1998-2000)
Stanley M. Little, Jr. (1986-88)	Bruce M. Pym (2000-2002)
Robert F. Buck (1988-90)	William W. Krippachne Jr. (2002-2004)
John D. Mangels (1990-92)	Kenny Alhadeff (2004-2007)
Kenneth L. Hatch (1992-94)	Norman B. Rice (2007-2009)

Marilynn Sheldon, Founding Managing Director

The 5th Avenue Theatre is in existence today because of the commitment of the following visionaries:

5th Avenue Theatre Founders

Responsible for the 1979 renovation

Airborne Freight Corporation	Pay 'N Save Corporation
ALPAC-Pepsi-Cola/Seven-Up	Peoples National Bank of Washington
Morris and Joan Alhadeff -	Physio-Control Corporation
Longacres Race Track	Rainier National Bank
American Building Maintenance Industries	SAFECO Corporation
The Boeing Company	Faye & Herman Sarkowsky
Burlington Northern, Inc.	Schoenfeld Industries, Inc.
Crescent Foods	Schuck's Auto Supply, Inc.
James R. Ellis	Seattle-First National Bank
John Fluke Manufacturing Co., Inc.	The Seattle Times
Frederick & Nelson	Simpson Timber Company
Item House	Skinner Corporation
Dr. Solomon Katz	UNICO Properties, Inc.
King Broadcasting Company	Unigard Insurance Group
KIRO Radio and TV	United Airlines-Western International Hotels
KOMO Radio and Television	Univar Corporation
Nordstrom	Urban Investment & Development Co./Four Seasons
Old National Bank of Washington	Hotels
Overall Laundry Services	Washington Energy Co.
PACCAR, Inc.	Washington Mutual Savings Bank Foundation
Pacific National Bank of Washington	Weisfield's Inc.
Pacific Northwest Bell	Weyerhaeuser Company Foundation

Musical Theatre Company Sponsors

Responsible for the 1989 establishment of the Musical Theatre Company

American Building Maintenance Company
The Boeing Company
First Interstate Bank of Washington N.A.
Fisher Communications
John Fluke Mfg. Co., Inc
Joshua Green Foundation
KIRO, Inc.
Nordstrom
Puget Sound Bancorp
SAFECO
Faye and Herman Sarkowsky
Seafirst Bank
The Seattle Times and Seattle Post-Intelligencer
Security Pacific Bank Washington
Skinner Corporation
Samuel and Althea Stroum
UNICO Properties
Univar/VWR Foundation
US West
Washington Energy Company
Weyerhaeuser Company Foundation

5th Ave Contributors

The 5th Avenue gratefully recognizes the following individuals, corporations, foundations, and government agencies for their generous support. This list reflects gifts made from December 28, 2009 through December 28, 2010. This list includes the cumulative giving to our Annual Fund, ticket purchases to our Gala, and contributions to our Downstairs at The 5th Capital Campaign. While space limitations prevent us from listing every donor, we are grateful for all levels of support. If you have any questions or would like information about supporting The 5th Avenue, please contact the Development Office at 206.625.1418.

GIFTS OF \$1,000,000

Marleen and Kenny Alhadeff
5th Avenue Producing Partner
Christabel Gough
Sheryl and Peter Neupert

2010 - 2011 SEASON CO-SPONSORS

Safeco Insurance
U.S. Bank

EXECUTIVE PRODUCERS

\$250,000 - \$500,000
The Paul G. Allen Family Foundation
Stephen P. Reynolds and Paula Rospit Reynolds
Bonnie and Jim Towne

NEXT GENERATION FOUNDERS

\$100,000 - \$249,000
The Benaroya Family
Bill & Melinda Gates Foundation
Joshua Green Foundation
Jeffrey and Marilyn Katzberg
Bill and Michelle Krippaehne
National Endowment for the Arts
The Norcliffe Foundation
Puget Sound Energy
Faye and Herman Sarkowsky
Unico Properties, Inc.
Tom and Connie Walsh

DISTINGUISHED BENEFACTORS

\$50,000 - \$99,999
4Culture
The Boeing Company
Ken Clay
Laurie and Charlie Lyford
Mary Ann and John Mangels
Microsoft Corporation
NBBJ
Catherine and David Skinner

DISTINGUISHED PRODUCERS

\$20,000 - \$49,999
ArtsFund
Mr. and Mrs. Robert R. Braun Jr.
The Covey Family
Barbara L. Crowe
Wanda Herndon
Jean K. Lafromboise Foundation
Mr. and Mrs. Robert and Glenna Kendall
Norman Archibald Charitable Foundation
Schoultz Family Foundation
The Seattle Foundation
The Sheri and Les Biller Family Foundation
Wells Fargo

EXECUTIVE DIRECTOR'S CIRCLE

\$10,000 - \$19,999
David Armstrong
Catherine Boshaw and Doug Edlund
City of Seattle—Office of Arts and Cultural Affairs
The Conns
Steve Freimuth
Bert and Gudrun Gegner
Margaret C. Inouye
Benjamin Leifer
Macy's
PONCHO

Buzz and Beth Porter
RealNetworksFoundation
Norman and Constance Rice
Susie and Phil Stoller
R. "Porky" Thomsen and Terri Stephenson
Turner Construction Company
Washington State Arts Commission
Sterling and Melinda Wilson

DIRECTOR'S CIRCLE

\$5,000 - \$9,999
Apex Foundation
Dean and Barbara Arnold
Rex and Angela Bates
Bill Berry
Broadway League
Steve and Georgene Camp
Hope and Peter Cochran
Robert and Renee DeVinck
Mona and John Fandel
Fisher Communications Inc.
Gary J. Fuller and Randy L. Everett
The Glazer Foundation
Robert T. Golden and Marilyn Sheldon
Bernadine and Sean Griffin
John and Sondra Hanley
Erin and Jim Havens
Rick and Kandy Holley
Peter and Peggy Horvitz
Tom and Marsha Kauzlarich
Le Chateau Winery
Tim and Brenda Lee
Mark Levine and John Keppeler
Lucky Seven Foundation
Gloria McPhail
J. Craig Morris / The Happy Cooker
William J. and Nancy F. Nichols
Larry and Valorie Osterman
Puget Sound Refrigeration and Rob Miller
Tom and Teita Reveley
James and Bet Schuler
Linda Secor
Rob and Jan Sexton
Thomas E. and Nita F. Sitterley
Kirk and Candice Soderquist
Robert F. and Karen R. Trenner
Colby Underwood
Bruce and Peggy Wanta
Karla and Gary Waterman
1 Anonymous

ARTIST'S CIRCLE

\$2,500 - \$4,999
Karen Adlum • Geoffrey Antos • Adam and Maura Barr • Phil and Tiia-Mai Barrett • J.E. and Marjorie Beardsley • Andrew and Shayna Begun • BHV Design Lab • George Brewer/Harmon Enterprises • Kevin and Lisa Conner • Jeff and Sue Cutting • Davis Wright Tremaine LLP • John DeVore • Dr. Stephen and Mrs. Pamela Done • Robert J. and Olga T. Earle • Sharon and Burrard Eddy • Richard and Maude Ferry • Sandra Frederick • Jean Gardner • Heinz Gehlhaar and Eileen Bear • The Greco Family • Jan and Rich Green • Garrett Greer • David and Cheryl Hadley • Bob and Jan Harvey • Steven and Susan Horton • Carolyn and George Hubman • Christian Huitema and Neige Gil • Derek and Karol Jamison • Jeffrey and Barbara King • Kenneth Kluge and Susan Dogen • Karen Koon and Brad Edwards • Grace and Franz Lazarus • Myron and Shirley Lindberg • Marty and Sharon Lott • Twyla and Tom Lucas • Judith Lybecker • Dan and Jane McConnell • Michael and Nikki McCormack • Jennifer McGetrick-Swan • Michael and Barbara McKernan • Pepsi Bottling Group - Seattle • Charles Olivier III • Walt

Pisco • Protiviti • Bruce and Celia Pym • Ken Ragsdale • Ann Ramsay Jenkins • Samuel J. Renfro • Don and Bev Schmidt • Charles B. See Foundation • Karen and Don Shaw • Marvin Parsons and Jeanne Sheldon • Dick and Pat Shinstrom • Orin and Janet Smith • Linda and David Stahl • Todd and Pauli Stakset • Gary and Barbara Stone • Mrs. Samuel Stroum • Pamela Trujillo • Dale and Lynda Wagner • Connie Walsh* • Kathleen Weiss • Dennis and Jo Anne White • Christine Wiltz • 2 Anonymous

EXECUTIVE PRODUCER'S CLUB

\$1,500 - \$2,499
The Aguiar Group • Sharon Ahlen • Karen Anderson MD • Bob and Clodagh Ash • Keith and Sheri Bankston • Michael Bauer • Kay Baxter • Dr. Ellen Beauchamp • Tanya Bednarski and Greg Johnson • Lani Bertino • Deidre J. Blankenship • Glen Bodman • Michael and Janelle Brookman • Ronald G. Campos • Debby Carter • Sandra B. Chivers • K. Linnea Peterson and John Corman • Jim and Nancy Crim • Martha Dawson and Ron Corbell • Mike and Maggie De Laurentis • James R. Ellis • Tom and Carol Fleck • The Francesca Fund • Travis and Christy Gagnier • Cecile Haw • Dan Hennessey • Susan and Roger Howell • Meredith and Jim Hutchins • David and Riofelia Jones • Judy and Bill Jurden • Danuta Kasprzyk and Daniel Montana • Teddi Kendall • SaSa and Ken Kirkpatrick • Chris Knoll and Cheryl Dobes • June Kubo • Edwin C. "Ned" Laird • Roger S. Layman • J Keith Michel • Ron and Maria Murphree • Gregg and Judy Nelson • Joseph Newman and Duane Oswald • Envelopes Unlimited Inc./Cindy and Glenn Oakes • Gregory and Marta Oberg • Steven and Victoria Odden • Anthony Papini and Gian Bruno • The Peach Foundation • Nancy and Mark Pellegrino • Karen E. Phillips • Mike and Wendy Popke • Paula Raschko • John E. Rasmussen • Ronald & Deborah Reed • Marilyn and Patrick Roberts • Doug and Lori Rosencrans • Steve Rovig and Brian Giddens • Skip Sampelayo • Terry Scheithing and Ben Kramer • Seattle Rotary • Mr. and Mrs. Stephen J. Servis • Darren and Anne Shakib • Lee Sheldford • Diane Stillman • John and Marilyn Story • Gary and Elizabeth Sundem • Jeffrey Sutherland • In Memory of Jackie Taylor • Dr. Matthew and Catherine Coles Tedesco • Stephen Tenge • Ann A. Boyce • Arthur and Ann Thomas • Kerry Thompson • Jerome and Faye Truskowski • Washington Women's Foundation • Becca and Bill Wert • Patty and John White • The Zyskowski Family - In Loving Memory of Jerry and Betty Mae McBride • 3 Anonymous

PRODUCER'S CLUB

\$1,000 - \$1,499
A+ Storage Container and Modification, Inc. • Kathy Aaron • Dean and Lori Adams • Michelle Ammenwerth - In Memory of Michael Verdone • Stephen and Rita Anderson • Mary Anne Aspinwall • Edith and Ray Aspiro • Robert Avery • Robert L. Avery • Baby Pictures Ultrasound • Janine Baldrige and Suzy Wahmann • Doug Ball and Connie Stine • Kathy and Mike Barker • Carolyn Bechtel • Carl Behnke • Charlotte Behnke • Sally Behnke • Yvonne Belshaw • John Bennett • Steve Bentley • Theresa Binger • John Blakeley • Eric Blom • Neal and Katherine Booth • Nicole Bouvion • Patrick and Vicki Branco • Donald and Susan Bressler • Bob and Bobbi Bridge • Sandee Brock • Kerry Burger • Howard and Kay Burton • Marsha Caldwell • Carl Williams Interiors • Robert and Ruth Carlson • Daniel and Margaret Carper Foundation • Douglas and Mary Casady • Doris and James Cassan • Frank and Denise Catalano • Jean Chamberlin • Judith A. Chapman • Christopher Chow and Dan Thane • Serena Cohen • Megan and John Collier • William and Leanne Colwell • Consumer Perspectives, Inc. • David Coons • Christina Cyr and Alan Page • Judith C. Dart • KC P. De Haan and Jac De Haan • Pamela Devries • Dennis DeYoung • Michael David and Lauren Mitchell • Ann and Gus Donk • Dr. Darrel Dreke • Dr. and Mrs. Robert Ehrlich • Jerry and Julie Elkington • David E. and Diane M. Ellison • David and Linda Ernst • Fanfare Events • Janet Faulkner • Micki and Bob Flowers • Dana Forflylow and Doug Buros • Alvin and Mary Formo • Sharon Friel • Gene and Vallie Jo Fry • Gerry and Linda Gallagher • Arthur E. Garverick • Deborah Gates • Sarah Nash Gates • Robert Gay • Don and Sue Gill • Bobbi Gohr and Andrew Corner • Jackie and Art Gollofon • Gaylon and Stephanie Goodwin • Kathy and Kelly Graffis • Keith and Susan Gray • David W. Gray • Marilyn Green • Betty and Henry Haggard • Patricia Haight • John and Laura Hammarlund • John and Katherine Harnish • Bart and Toni Heath • Mary and Tom Herche • Harold and Mary Frances Hill • Vaughn Himes • Ken and Melinda Holland • Robert and Susan Holmes • Hal and Donna Howard • Laurin C. Huffman II • Gary and Lori Imel •

* The Creativity Fund

5th Ave Contributors

Irene Barnett Foundation • Anna Jackson • Kathy and Michael Jackson • Robert and Virginia Johnson • Rich and Karmann Kaplan • Bruce & Linda Kilen • Barbara Kindness • Merle and Joanne Kirkley • Tery and Bud Kirkpatrick • Steve and Carol Koehler • Moe and Susan Krabbé • Harvey and Bea Kriloff • Dan and Allyson Kuntz • Dawnell Lamb • Perry and Lyndna Langston • Patrick and Cheryl Layman • Gale Lee • Cherie Lenz-Hackett • Florence Leonard and Lynn Holms • Michelle Devenuti • Marcella McCaffray • Connie K. McKinley • Dianne McMullin • Jim and Laura Mendoza • Jennifer and Stephen Mitchell • Kim and Steve Moger • Robin and Bill Montero • The Morgan Fund • Larry and Kristin Neilson • Ronald Nelson and Jane Sossamon • William and Denise Nielsen • Amy Niermeyer • Michelle Norstrom • Tom and Linda Norwalk • Anthony and Mary Olheiser • Debbie and Rick Pabst • Arthur Patterson • Shelly Perich • Judy Pigott • Melvyn and Roz Poll • Linda and Bill Potter • Llewelyn G. Pritchard and Jonie Ashby Pritchard • Richard E. Pyle • Becky and Sean Quinlan • Wendy and Bill Rabel • Victorina and Eric Ridgeway • Fred and Anne Robertson • Connie and Steve Rogel • Ansel Rognlie and David R. Steindl • Jacob and Trehia Rohde • Todd and Donna Rosenberg • Frederick and Katherine Sands • Desiree Saraspi • Marie Sargeant • Anne and K.C. Schlachter • Howard and Sheri Schultz • Errol Scott and Kazi Langbehn • Edward and Kathleen Sherry • Robert Simeone and Linda Deright • Carl and Lorna Simmons • Bob and Lynne Simpson • Christy and Brian Smith • Todd and Kellee Smithenson • Leigh and Susi Stevens • Helen R. Stusser • Todd and Jane Summerfelt • Thomas Swarner and Kitty Dunn • Guy and Nancy Pinkerton • Gary and Tracy Towne • Staci Towne • The Twilight Exit • William and Ruth Vance • Mark and Kathy Wagner • Tom and Valerie Wall • Sheri Ward • Kate B. Webster • David Whitman • Whitman & Associates, Inc. • Andrew and Jennifer Wolfe • Jeneane Woolbright • 5 Anonymous •

PATRON

\$500 - \$999

Actors' Equity Foundation, Inc. • Donald and Eathel Allyn • Alan and Gilda Amort • Gary H. Andersen and Carolyn Andersen • Charles A. Andersen and Susan M. James • Samuel and Etta Anderson • Ernie Ankrim • Meri Arnett-Kremian • Crawford Ashmun • Valerie and John Backus • Jack and Bea Baker • Mark and Heather Barbieri • Carson Barnett • Tom and Kris Bassett • Karen and Craig Bathgate • Maria Bayer • Lynn and Howard Behar • Jack and Becky Benaroya • Robert and Layne Bezzo • Deborah Bianco • In Loving Memory of David Black • J. Cleve and Judith Borth • Chuck and Linda Boyd • John Breckenridge • Herb Bridge • Deryl Brown-Archie • Colleen Brown • Kurt Brunnenkatt • Charles Burnham • Eric and Shelly Cain • Mary Calderon • Donn Callaway • Michelle Carlos • Dennis and Aline Cauley • Michael and Deed Chase • In Honor of Leroy and Royson Chow • Jeanne Christianson • Rex and JoAnn Clark • Diana Clay and Michael Kerr • Peter and Anne-Marie Colino • Kathleen and Bill Collins • Robert Comfort • Bill and Ellen Conner • Bob and Linda Cornyn • Alan and Gina Cox • Bob and Sally Curnutt • Bob and Molly Davidson • Ryan Davis • Bob and Elaine DeLappe • Robert Dobis • Cynthia and William Duesenberg • Andrew Dulin and Linda Schoener • Roanne G. Dunbar • Robert and Alexandra Dunn • Tim and Tina Easter • Leo Eberle • Senja R. Edwards • Leonard and Edie Elion • Mack and Linda Elliott • Jack and Jeanne Fankhauser • Larry Fletcher • Brian and Windy Autumn Foster • Tere and Stan Foster • Stephanie Foust • Linda M. Fox and Monica Fox • Sharon Freil • Tessora and James Furlan • Sandra Gamble • Erich Gaultitz • Michael J. Gazarek • SallyAnn Geiger • In Memory of Louise Gerth • Nancy Gibbs • Anton and Karen N. Gielen • Marie Gunn • Chuck and Kathy Hamilton • Judy Hamilton • Geoffrey and Shannon Harry • William A. Hayward • John and Cheryl Hendricks • Judith Higgins • Kathy J. Hill • Harry and Sandy Holliday • Clarence Hopson • Randy and Gwen Houser • Don and Joan Horvancek • Dorothy Sloan Huey and Marilyn Lee Huey • Lynn Huff • Scotland Jacobson • Michael Jenkins • Norman Jenks • Eric and Linda Jeppesen • Donald C. Johnson • Scott and Georgia Johnson • Craig and Arden Kagerst • Kathy Cartwright / Dimension Systems • Jon Kechejian and Sandy Schoolfield • Jan Kandle • Virginia and Richard F. King • Greg Kucera • Stephen Kutz and Courtney Womack • Marian E. Lackovich • Edith Laird • John and Gloria Langen • Linda Larson • The Latimer Family • Robert and Joan Lawler • Stanley M. Little • Dianne D. Loeb • Mary and Harry Lo • Jennifer A. Lunz • Jennifer and Douglas Maines • Antoinette Malveaux • Joan A. Martin • Bill and Colleen McAleer • Nancy McCraney • Christe McMenomy • Mike and Patti Meyers • Carol A. Miller • Deirdre Miller • Lesley and George Moffat • Emily Moon • The File Box • Louise Moser • George and Fran Moynihan • Vanette L. Mrachek • James Navone • Denise I. Nelson • Robert Nelson • Richard and Carolee Nichols • Sue Noble • Nancy S. Nordhoff • Floyd and Nikki Nordstrom • James Northrop • Sue Oskowski • Susan Otten • Michael and Maria Owen • Michael Parham • Connie and David Parker • John and Mary Payne • Cairn Pedersen • Robert and Steffi Pencovic • Jeffrey and Sharon Perkins • Chris

Peterson and Mark Wert • Edward and Marga Pillitteri • Diana and Larry Podnar • Ric Prall DDS • John and Carol Radovich • Barry S. Ray • Chester Reilly • Carrie Rhodes • Betty Robertson • Shirley Reynolds Rock • Roberto and Anne Marie Rodriguez • Curtis and Myrna Rosler • Debra and Kendall Russell • Haley Sams • Lester & Mary Ann Sauvage • Amy Schluter • Cindy Schrader • Cindy and Bill Schuur • John Searing • Jean Sheridan • Joe and Lynetta Showaker • David Showalter • Neal and Linda Shulman • Don and Marilyn Sidel • Gregory R. Smith • Deborah and Randall Smith • Marilyn and Doug Southern • Jim Stanford • Dennis Storie • Jessimai and Byron Strange • Dick and Linda Sturza • Carol Swarbrick and Jim Dries • Susan H. Swindells • Alice Tang and Reuben Olinsky • Sharel and Mark Thom • Michael and Karen Thorp • Russ and Pat Thurman • Lawrence and Patricia Timmons • Conrad and Carol Tovar • Dr. Oren Townsend • Allan and Barbara Tyson • Muriel Van Housen and Chuck Stevens • Aparna Venkateswaran • Mark and Christina Walker • Nina Davis and Elizabeth Wallace • Barbara J. Wechsler Attorney at Law • Mary Jo Wertheimer • Rochelle Whelan • Claudette and Reginald Whiting • Dr. & Mrs. Allen E. Wiesen • Madeline D. Wiley • Ralph and Betty Willis • Jim and Deanna Wilson • Jessica Wisness • Barbara G. Wright • Margaret Yekel • Mrs. George H. Yorgana • Thomas York • Michelle Young • 7 Anonymous

SPONSOR

\$250 - \$499

Ruth Adams and Marilyn Pierce • Ray and Carol Airone • Albert Lee Appliance • Bob and Janice Alexander • Karon Allen • Mark and Terri Allgeier • Bob Alvine • Ture and Patricia Anderson • Sharon Andreason • Debra and Henry Andresen • Joan F. Andrews • Lois Andrews • Susan and Heather Anstead • John and Karen Arbini • Richard and Dianne Arensburg • Nolan Arruda and John Cornelison • Leslie and Kurt Asplund • The Austill Family • Loren and Sandra Avenell • Mary Backman • Judy and Steve Badley • Karen Badgley • Annette and Pete Bailes • Mark and Donna Bailey • William and Madeleine Ball • Keith and Sheri Bankston • Thomas Barghausen • Steve and Jeanine Barndt • Craig and Sharon Barnhart • The Barronian Family • Cathy Bartel • Thomas Becker and Cheryl Hart • Mr. & Mrs. Mike Beckman • Kathleen Bemis and Don Blair • Blair and Mary Bernson • Sharon Berry • Sharon Bitcon • David and Marsha Black • David and Sharon Lee Blaylock • Linda Boatman • The Boeing Company • John Bolog • Vreni Borner • Adele Botha and Jennifer Romich • Terri Bovingdon • Richard and Kathleen Bowen • Penny Bowman • Robert A. Bradley • Moira and Bridget Bradshaw • Anne Bremner • Craig and Darlene Brown • Sherry Ramsey • Mr. and Mrs. Thomas Brown • Kristine Bryan • Jacqueline Burnstead • Alice Burnett • Lynne Bush • Ralph L. Byron • Tom and Carol Cabe • Caroline Call • Leonard and Lynne Campbell • Treg and Kim Camper • Christel Cangus • Richard Lowell • Jane Caron • Dr. John and Arlene Carpenter • Christian Carroll • Cathy Cartwright • Dr. Mike and Linda Casey • Richard Castaneda • Norman Chamberlain • Gayle Chew • Joan Clemmer • Marianne and Rich Clovis • Robert and Janet L. Coe • Rich Cohan • Robert and Glenda Collins • Brenda Cooper • Gary and Consuelo Corbett • Gene and Marilyn Cote • Joseph Cox and Sean Maguire • Joseph Crick • Calvin Crow • Rick and Kathie Dalzell • Melanee Daniels and Stuart Platt • Diane Darling • Mr. and Mrs. Alan Dashen • Fred and Marge Daul • Candy Davis • Phil and Elaine Davis • Mary Dawson • Barbara De Ste Croix and Greg Morehouse • Jeffrey and Kristen Dean • Charles J. Debruler, Jr. • Jeanie Decker • Scott Dehem • Brian Denault • Ben Dernbach • Karen Derrey and Friends • John D. Derry • Muriel Diamond • Richard and Kathleen Dill • Karen and Mark Dire • Randy Dorn • Mary and Patrick Dreckman • Kathryn Drinkard • Eric and Mary Drummond-Hay • Michael Dunkin • Charles and Jessica Dunn • Gregg DuPont and Linda Debowes • Gerald and Debra Duris • Debbie Duvall • Kristin Ecklund • Glenn and Janet Edwards • Jeff and Nancy Edwards • Craig E. Elkins • Pam and Jeffery Ellison • Lynn Elmore • Steve and Arlene Erickson • Michele and Philip Erickson • Vicki Fabre • Richard and Geraldine Fain • Anna Del Torro • Gary and Jennifer Fancher • Nyle and Terri Farmer • David Farrar • David Farrar • Dr. Vicki Fidler • John and Diane Fitzgerald • David and Dorothy Fluke • Priscilla Fortiner • Jay and Gabrielle Freeland • Eleanor Freeman • David and Gina Frost • Robert A. Frost • Bernice Fujiwara • Sedrick Austin and Pam Fukui • Stephen Fulton • Peter and Roberta Gallimore • Nan and Bill Garrison • Janet Gaunt • Scott Gifford • David and Kathryn Godwin • Thomas and Brooke Golden • Laura B. Gowen • Jane Grafton • Stephen and Kathleen Graham • Kathleen Kilcullen and Bruce Greene • Dr. and Mrs. Ted Greenlee • Terry Greer • Kevin M. and Judith Griffith • Andrew Grimberg • Doreen Groesbeck and Elaine Jurun • Norm and Sally Gross • Mr. and Mrs. James Gunstone • Mr. and Mrs. Roy Gustafson • Wes Gustafson • Paul R. and Sheila Gutowski • Jonathan Hagwood • Bernie Hall and Mary Boles-Hall • Melinda Hallsted • Wendy Halpin • Eric and Merle Hamada • Peggy and Doug Hanel • Alexander and Sheila Hargis • Judy and Tom Harris • Healing Touch for Animals • Frances M. Heaverlo • Michael and Jane Henery • Eric and Corrine Hensley • Russel Hermies • Michael Herzfeld and Charles Drabkin • Sheila Hess • William and Priscilla High • Eleanor S. Hill • Diane and David

Hoff • Gerhard and Rita Hoffman • Mrs. William Hogue • Christine Holme • Rex Holt • Paula Houston • Susanne F. Hubbach • Ronalyn Huenergard • C David Hughbanks • Laura Humiston • Alvina Hummel • Diane and Forrest Hurley • Stephen Huss • Marc S. Hutchinson, C.P.A. • Stuart Iley and Family • Cayman Ilika • Marilyn Iverson • Kathy Izdepski • Mr. John Jacobi • Terry A. and Michael L. Jankowski • Sherri Jefferson • Ruth Jensen • Larry and Carol Jergens • Catherine Jett • Christine Jew • In Honor of Ty Skubitz • Mr. and Mrs. Bari Johnson • Michael Johnson • Michael Johnson • Preston and Liz Johnson • Loren and LaRae Jones • Mike and Susan Jostrom • Karol and Leyton Jump • Steve and Kathy Keiper • Kevin and Jean Kelly • Todd Kelly • Jane Kennedy • Kristina and Tim Kennedy • Harold and Ruth Kephart • Cindy A. Klett • Roger Klose • Elijah Knight • Floyd Kolmer • Linda and Ron Krell • Mike and Toni Kuresman • Alice Lamken • Alan J. and Mary Ann Lamsek • Priscilla and Ned Lange • Greg Lange • Dan and Deborah Lanksbury • Mr. and Mrs. Glenn Lasko • Dale and Patti Lauer • Terrill LeFavre • Monica Leight • John Lengenfelder • Neal F. Lessenger • Marjorie J. Levar • Richard and Barbara Levin • General Manager • David and Charlotte Lomet • Ms. Sue Long • Mr. and Mrs. Floyd Lorenz • Jessica Louie • Joseph Lovejoy • Floyd Lovelady • Sue and William Lowery • Greg Lowney and Marianne Snyder • Jerry Luiten • May Ly • Bill and Kerri Lynch • Nancy MacCormack • Michael MacFadden • Murry and Agnes MacPherson • Amanda Maggiora • Jerry Magnoni and Janet Mueller • Glenn and Jeanne Malubay • Fred Mameri • Nani Manning • Dr. Bruce Mathey • James and Amy Matsuoka • Monica Matt • David McAlees • May McCarthy • Donald McCaw • Jack and Betty McConkey • Patrick and Debbie McCormick • Joan McCullough • Alan and Connie McEachern • Michael J. McGowan • Greg McKnight • Don Meberg • Nancy and Chuck Mertel • Ken Messer • Gina Meyers • Niels Michelsen • Microsoft Giving Campaign • Glenn Midomaru • Steve and Mary Mindemann • Chie Mitsui • Anne Mize • Michele and Ken Moore • Roderick and Shirley Moore • Jean, Emily, and Autumn Morgan • Chris Morgan • Steve Moselle • Randa Minkarh • Claudine and Greg Mulvihill • Elizabeth Murray • Jonathan Nedved • Bob and Lois Nicholl • Jean Whitley Niehaus • Shirley Nielsen • Kate Nielson • Janice Nishimori • Dan and Betsy Norton-Middaugh • Lloyd Novakowski • Mr. Gary M. Oberto • Dennis and Kay O'Donnell • Kerry O'Keefe • Kevin and Elizabeth O'Keefe • Meredith O'Kelley • Elsa Oliva • Mary Anne Olmstead • Duane Olson • Richard Orday and Marie O'Day • Albert and Sharon Owens • Cherrie Palm • Don and Kim Parkinson • Bob and Annette Parks • Margaret Paterson • Richard and Mary Paul • Ms. Patti Payne • Michele Penberthy • Linda Perdomo Family • Helen C. Peterson • J. David Peterson • Peticot Junction • Barbara Phillips • Robin Phillips • Scott Pierson • Gwen Pilo • Jeanette and Joe Piott • Bob and Joann Piquette • Marcia Pirnie • Pam, Tim, and Zack Plumley • Kimberly Pollow • Joan and Brian Prou • James Power • Robin and Ric Pradel • Natasha Pranger • Eileen Pratt Pringle • Linda Pritts • Jessie Raetz • Dick and Alice Rapasky • Ed and Kathryn Rawn • Denny Reagan • Dr. Keith and Tola Redd • Dorothy Reek • Jim Reed • Dale P. Reiser Family • Thomas and Gerriann Reko • Rao Remala • Julie Richard • Jim and Doreen Rigos • Emily Robinson • Rebecca Roedell • Sandra Rohwein and Jodee and Kelsey Strickland • Erica Rose • Melissa and Nathaniel Rothbauer • Janet C. Rothnie • Robert and Betty Rothnie • Philip and Rosalyn Rourke • Steve and Jill Russo • Lere Ryan • Shannon Sakshaug • Lu Ann and David Santillanes • Anne Schlueter • David Schooler and Kristen Webb • Yolanda Scott-Ervin • Janice and Douglas Sears • Kerri D. Segale • Gregory Sena • Dewayne Sennett • Dana and Rhianha Shaltry • Jan and Jay Shaw • Laura S. Shifflette • Harriet Sirkir • Mr. and Mrs. Jeff Small • Richard W. Smith • Robert L. Smith, M.D. • Karleen Snetsinger • Don Sorensen • D. Souza • John and Amron Spaid • Richard and Margaret Spangler • Mark and Jennifer Spatz • Bart Spellman • Ed and Marilyn Sprague • Anne and Mark Stanton • Irish and Bob Stanton • Molly and Jim Stearns • Cathy Stentz • Rosalie and Tracie Sterner • Jane Stevens and Jerry Zimmerman • Will and Chris Stewart • Linda K. Stockham • Dale and Mary Jo Beuning • Larry Stranz • Donna Strickland • Elizabeth Suckow • Walt Jacard and Bonnie Sundberg • Walt and Sharon Swain • David Swan • R. Craig Swensen • Ryan Taisey • Roland Takami • Ken and Lynne Tanino • Ronald Tate • Mike and Shawn Tavarn • Brenda and David Terrill • Anne Theisen • Trudy Tindall • Roseanne Torgerson • Tom and Diane Trudnowski • Sergei Tschernisch • Mandy Tsui • Janet Turpen • Ted Tuttle • Linda R. Underhill • Lisa and Norbert Van Dam • Norma J. VandenBerge and Don Hemovich • Lisa Vivian • Michael J. Wagner, D.M.D., MS • Brad Walker • Jan Walker • Eileen Wang and Jeff Stoner • Kenneth Ward • Carolyn A. Warhol • Bonita Waters • Steve Weber • Ginny and John Wells • Wellington and Linda Westbrook • Barbara and Ben Whisler • Margaret Whitney • Kristina Wicke • Robert and Sara Wicklein • Carol Wiesenbach • John and Darlene Wilczynski • Ray and Jackie Lindstrom • Terry Willard • Mark Williams and Carrie York-Williams • Douglas and Anne Williams • Janet Williams • Dennis Wilson • Greg and Cindy Wingo • Karen Winter and Kathleen Judge • Douglas and Darlene Wisness • Joann Witter • Susan M. Wojack • John and Christine Wolfe • Brett Wortzman • John and Patsy Wright • 15 Anonymous

5th Ave Spotlight on Giving

2010-2011 Season Sponsors

Safeco InsuranceTM

Member of Liberty Mutual Group

Safeco Insurance is proud to be a co-season sponsor of The 5th Avenue Theatre for the 2010-2011 season.

For more than 86 years, Safeco Insurance — along with its employees and independent agent partners — has helped protect families in the Puget Sound community. Now a part of Liberty Mutual Group, they're proud to sponsor The 5th Avenue Theatre and our combined commitment to the cultural enrichment of our community.

The 5th Avenue Theatre gratefully acknowledges Safeco Insurance for their continued support of the arts in our community and for their role in helping to maintain first-class musical theater in the Pacific Northwest.

usbank

U.S. Bank is honored to be a co-season sponsor of The 5th Avenue Theatre's 30th Anniversary Season. The 5th Avenue Theatre is one of the premier theatres in the Northwest and throughout the country, bringing enterprising world premieres and musical masterpieces to our community. U.S. Bank believes that their success depends on the vitality of the communities they serve. They support organizations like The 5th Avenue Theatre because of the impact they bring to our quality of life. Through corporate giving, volunteerism, partnerships and collaborative programs, U.S. Bank strives to enrich and enhance the needs of our community. U.S. Bank congratulates The 5th Avenue Theatre for 30 years of enchanting and magical productions. Enjoy the show.



It is an extreme pride and pleasure for us to be the production sponsor of this historic first co-production between two of Seattle's treasures, The 5th Avenue Theatre & ACT. Our family's history with both theatres goes back generations. In our darkest moments, theatre brings us light.

At times of stress, theatre can bring us joy. It is an essential ingredient to the quality and productivity of the human spirit. We have been involved in every production of *Vanities* as a musical and believe it is both entertaining and important as it takes us through the years, tears, and laughter as three women find each other and themselves. Congratulations to all who are involved in the theatrical journey. We travel a road together to a destiny of wonder.

— Marleen and Kenny Alhadeff

On behalf of both The 5th Avenue Theatre and ACT – A Contemporary Theatre — we salute Tony's Events and Catering as our *Vanities* catering sponsor. We are grateful for their ongoing generosity and support to both organizations.

Tony's
Events & Catering

In business for Seattle for 14 years, Tony's has earned a reputation for creating beautiful, seamless and unforgettable events. From festive galas and intimate receptions to corporate meetings and retreats, every detail is thoughtfully considered.

For more information, please visit
www.tonyscatering.com.

Safeco InsuranceTM

Member of Liberty Mutual Group

usbank

PONCHO
artsmatter

ARTSFUND

CULTURE
KING COUNTY LODGING TAX

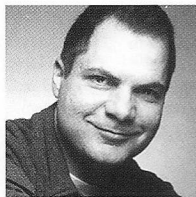


Mayor's Office of
ARTS & CULTURAL AFFAIRS

tp
TEAM PHOTOGENIC

WASHINGTON STATE ARTS COMMISSION

The 5th Avenue



DAVID ARMSTRONG
(Executive Producer and Artistic Director) served as The Theatre's Producing Artistic Director from 2000 through 2009. During

this time he directed acclaimed productions of *Candide*, *Hello, Dolly!*, *Mame*, *White Christmas*, *Sweeney Todd*, *Hair*, *A Little Night Music*, *The Secret Garden*, *Company*, *The Rocky Horror Show*, *Pippin*, *Yankee Doodle Dandy!* and *Anything Goes*. He also established The 5th as a national leader in the development and production of new musicals. As a producer, director, writer and choreographer his work has been seen in New York, Los Angeles and many leading regional theaters including The Kennedy Center, Ordway Center, Cincinnati Playhouse, Pittsburgh Civic Light Opera, Repertory of St. Louis, Ford's Theater and Paper Mill Playhouse. From 1990-1995, he served as the Artistic Director of The Cohoes Music Hall in upstate NY. His writing includes the books for the musicals *The Wonder Years* (winner of seven LA Drama-Logue Awards), *Gold Rush!* and *Yankee Doodle Dandy!*



BERNADINE (BERNIE) C. GRIFFIN (Managing Director) established the first-ever Development Department in June of 2002 and since then has raised more than \$20

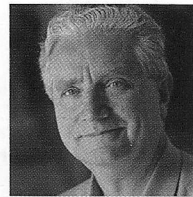
million in support of The 5th. She brings to her position nearly 30 years of fundraising and management experience. Prior to The 5th Avenue, Bernie served as Director of Development for the prestigious Geffen Playhouse in Los Angeles and The Laguna Playhouse in Laguna Beach, California. Before moving to Southern California, she worked for the Seattle Symphony where she was very proud to have been part of the team that raised the money to build Benaroya Hall. In addition to the Symphony Bernie worked for the Tony-Award winning Seattle Repertory Theatre. In New York City she was Director of Special Projects for Tony Randall's National Actors Theatre. Bernie began her fundraising career at the University of Denver. She is a member of the National Alliance for Musical Theater, Seattle Rotary #4 and the Association of Fundraising Professionals. She received her BA degree from St. Martin's University and is proud to have been born and raised in Walla Walla, Washington. Bernie is married to award-winning actor, Sean G. Griffin.



BILL BERRY
(Producing Director) served as The 5th Avenue's Associate Producing Artistic Director and Casting Director from 2002 through 2009. During

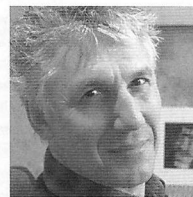
that time he directed our productions of *West Side Story* (Seattle Times Footlight Award), *Wonderful Town* (Seattle Times Footlight Award), *Wizard of Oz* and *Smokey Joe's Café*. Mr. Berry's directing work has been seen at theaters across the country, most recently at New Jersey's Paper Mill Playhouse where he directed a critically acclaimed production of *On the Town*. Directing highlights include: *Cabaret* performed at The 5th Avenue Theatre, St. Paul's Ordway Center (Ivey Award), San Jose's American Musical Theatre and Houston's Theatre Under the Stars. From 2002-2009, he served as the Producing Director for The 5th Avenue's education and outreach programs. During that time he significantly expanded the scope and impact of these initiatives, including spearheading the creation of our Fridays At The 5th, The 5th Avenue Awards honoring excellence in high school musical theater and substantially increasing the reach of our Adventure Musical Theatre Touring Company throughout the Northwest. These programs combined now serve 37,000 students annually. He also initiated our *Show Talk* series, which seeks to deepen the theater-going experience. Prior to his work at The 5th Avenue Theatre Mr. Berry was a freelance theater artist based in New York City.

ACT—A Contemporary Theatre



KURT BEATTIE
(Artistic Director) Beattie's past productions at ACT include *The Lieutenant of Inishmore*, *Rock 'n' Roll*, *Becky's New Car*, *Intimate Exchanges*, *First Class*, *The*

Pillowman, *Mitzi's Abortion*, *The Underpants*, *Vincent in Brixton*, *Bach at Leipzig*, *Black Coffee*, *Alki*, *Fuddy Meers*, *Fully Committed*, *Via Dolorosa* and *A Christmas Carol*. Elsewhere he has directed *Things Being What They Are* and *Art* at Seattle Repertory Theatre, as well as productions at The Empty Space, Intiman, the Hugo House, and the University of Washington. As an actor, he has appeared in leading and major roles at ACT, Seattle Repertory, Intiman and The Empty Space. Beattie was the co-recipient of the 2004 Theatre Puget Sound Gregory A. Falls Sustained Achievement Award. This season he'll direct *In the Next Room*, or *The Vibrator Play* and *Double Indemnity*.



GIAN-CARLO SCANDIUZZI
(Executive Director) is a founder of Agate Films and Clear Pictures, producing such films as *Prototype*, *Dark Drive*, *Outpatient* and *The Flats*

and Indieflex, a distribution company. In 1979, Scandiuozzi started Modern Productions, bringing to Seattle such legendary bands as The Police, Devo, Nina Hagen, Iggy Pop, The Ramones, John Cale, Robert Fripp, James Brown, Muddy Waters and many more. He performed in several plays at The Empty Space Theatre including *Aunt Dan and Lemon*, *The Return of Pinocchio* and *Dracula*. In the early '80s, he collaborated with many Seattle performance artists such as Norman Durkey, Alan Lande and Jesse Bernstein. He also acted in various films including *Bugsy*, *The Public Eye*, *Another You*, *Casanova's Kiss* and *Killing Zoe*. He graduated from the Ecole Supérieure D'Art Dramatique of Geneva.

Turn in your paid ticket stub to see VANITIES again for only \$20*

*Redeem on the day you want to attend, in person at the ACT box office. Limit one \$20 ticket per paid ticket stub. Cash only. Subject to availability. Offer not good on previously purchased tickets or in combination with any other offer.



ACT Board of Trustees

ACT BOARD OF TRUSTEES

Philip M. Condit
Chairman
Brian Turner
President
Kelly Miller
Vice President, Development Chair
Chuck Sitkin
Vice President at Large, Board Development Chair
Alan J. Rappoport
Vice President, Audience Development Chair
Daniel B. Hazzard
Vice President, Facilities Chair
Ingrid Sarapuu
Treasurer
Elaine Spencer
Secretary
Brad Fowler
Past President

Sheena R. Aebig
Dan Alexander
Joan D. Barokas
Lance Becker
Laura P. Besteman
Kyle Branam
Paul Butzi
Ron J. Cathcart
Colin Chapman
Charles Fitzgerald
Whitney V. Hazzard
Richard Hesik
Stephanie Hilbert
John E. Jacobsen II
William J. Justen
Petra Franklin Lahaie
Lauren Mikov
Judy J. Ness
Dr. George Ojemann
Barry B. Scovel
Sean Shanahan
John C. Siegler

Rob G. Stewart
Kristen J. Summersby
Sita Vashree
Chris K. Visser
Clifford Webster
Dr. Sherree Wen
Scott F. Wilson
Kyoko Matsumoto Wright

ACT ADVISORY COUNCIL

Sheena R. Aebig
Dr. Ellsworth C. Alvord, Jr.*
Aubrey Davis
Daniel D. Ederer
Jean Burch Falls
Jeannie M. Falls
John H. Faris
Carolyn H. Grinstein
Sara Comings Hoppin
C. David Hughbanks
Jonathan D. Klein
Keith Larson*
Jane W. Lyons
Louise J. McKinney

Gloria A. Moses
Nadine H. Murray
Douglas E. Norberg
Kristin G. Olson
Donald B. Paterson
Eric Pettigrew
Pamela Powers
Katherine L. Raff
Brooks G. Ragen
Catherine Roach
Jo Anne Rosen
Sam Rubinstein*
David E. Skinner
Walter Walkinshaw*
Dr. Robert Willkens*
David E. Wyman, Jr.
Jane H. Yerkes

EMERITUS COUNCIL

Richard C. Clorfelter
P. Cameron DeVore*
Esther Schoenfeld
Marvel Stewart*

A CONTEMPORARY THEATRE FOUNDATION

Philip M. Condit
Chairman
Kermit Anderson
President
John C. Siegler
Vice President
Katherine L. Raff
Secretary
Catherine Roach
Treasurer
Brad Fowler
Lucinda P. Richmond
Brian Turner

*In memoriam

ACT Staff

Kurt Beattie
Artistic Director
Carlo Scanduzzi
Executive Director

ARTISTIC

Margaret Layne
Casting Director & Artistic Associate
Anita Montgomery
Literary Manager
Nicole Boyer Cochran
Artistic Manager & Executive Assistant
Valerie Curtis-Newton
Artistic Associate, The Hansberry Project
Vivian Phillips
Producing Associate, The Hansberry Project
Kristina Sutherland
Education Director
Kenna Ketrick
Literary Intern
Katie Beudert
Casting Assistant
Stephanie Timm
Playwright in Residence

ADMINISTRATION

Adam Moomey
Operations Manager
Alyssa Byer
Special Events Producer
Brad Howe
Events Technician
Liam White
Volunteer Coordinator
Teddy Heard
Facilities Maintenance
Dave Parmley
Engineer
Responza Management Services
IT Administrators
Ashton Hymann
Efficiency Coordinator

FINANCE

Mary D. Brown, CPA
Chief Financial Officer
Michael Scheinine
Accountant
Tobi Beauchamp-Loya
Payroll

COMMUNICATIONS

Jacquelyn S. Rardin
Communications Director
Sebastien Scanduzzi
Video Manager
Ben Rapson
Interactive Media Specialist
Drew Barth
Marketing Coordinator
Maribeth Fletcher
Marketing Intern
Apex Media
Advertising
Rice Public Relations, LLC
Media Relations
West Coast Group Sales
Group Sales
Chris Bennion
Photographic Services
Kevin Jones Copywriting
Copywriter
Christa Fleming
Graphic Design
Xtremities
Graphic Design
Lynch Resources
Telemarketing

DEVELOPMENT

Josef Krebs
Development Director
Jennessa West
Associate Director of Development
Ben Derby
Major Gifts Manager & Board Liaison
John Osebold
Grant Writer
Sarah Abel
Special Projects Coordinator
Matthew Echert
Development Technology Specialist
Meaghan Halverson
Board & Development Intern
Krista Wright
Events & Development Intern

AUDIENCE SERVICES

Harley D. Rees
Memberships & Audience Services Director
Robert Hankins
Memberships & Audience Services Manager

Ryan Rowell
Tessitura Manager
Joe Mangialardi
Ticket Office Supervisor
Jim Moran
House Manager
Jeremy Rupperecht
Assistant House Manager
Javonna Arriaga
Christine DiTolvo
Katie Beudert
Paul Dumas
Erin Hancock
Scott Herman
Mike Jones
Kate Knappert
Tony Koons
Adrienne Littleton
Niki Magill
Juliette Oliver
Sarah Richardson
Darryl Singleton
Brittany Swarthout
Kyle Thompson
Audience Services
Christine Jew
Volunteer Usher Coordinator

PRODUCTION

Joan Toggenburger
Producing Director
Emily Cedergreen
Production Office Assistant
Skylar Hansen
Production Runner

STAGE MANAGEMENT

Jeffrey K. Hanson
Production Stage Manager
JR Welden
Stage Manager

COSTUME DEPARTMENTS

Carolyn Keim
Costume Director
Connie Rinchiuso
Costume Shop Foreman
Kim Dancy
First Hand & Lead Dresser
Sally Mellis
Wardrobe Master
Joyce Degenfelder
Wig Master

SCENIC DEPARTMENTS

Steve Coulter
Technical Director
Derek Baylor
Assistant Technical Director
Austin Smart
Master Scenic Carpenter
Jeff Manzolli
Amanda Quinn
Sean Wilkins
Scenic Carpenters
Mona Lang
Scenic Charge Artist
Marne Cohen Vance
Properties Master
Ken Ewert
Master Properties Artisan
Thomas Verdos
Lead Properties Artisan

STAGE OPERATIONS

Nick Farwell
Stage Operations Supervisor
James Nichols
Master Stage Carpenter
Pam Mulkern
Master Electrician
Max Langley
Master Sound Engineer
Brendan Patrick Hogan
Staff Sound Design

FOR THIS PRODUCTION

Jason Montgomery
Stagehands
Ruth Gilmore
Kevin Wilson
Scenic Artists
Josie Hankins
Director's Assistant
Marta Olson
Julia Trimarco
Ruthie Nicklaus
Stitchers
John Small
Kurchta Harding
Followspot Operators
Jeanne Franz
Nicolette Vannais
Props

5th Avenue Theatre Staff

David Armstrong, *Executive Producer and Artistic Director*
Bernadine C. Griffin, *Managing Director*

Bill Berry, *Producing Director*

ARTISTIC

Ian Eisendrath
Resident Musical Supervisor
Kristina Wicke
Company Manager
Albert Evans
Artistic and Music Associate
Aaron Tuttle
Executive Assistant to Mr. Armstrong
Brandon Ivie
Casting Associate/Artistic Project Manager
Dane Andersen
Assistant Orchestra Manager/Music Librarian

TICKET SERVICES

Peggy Busteed
Director of Ticketing Services
Maryke VanBeuzekom
Ticketing Operations Manager
Nichole Mines
Ticket Data Manager

Box Office

Christina Moon
Box Office Manager
Martha McKee
Assistant Box Office Manager

Ticketing Phone Center

Khajha Rogers
Ticketing Phone Center Manager
Isabel Dickey
Assistant Phone Center Manager
Hope Bowman, Meghan Nash, Aleksandra Weil
Phone Center Associates

Part Time Associates

Candis Anderson, Beth Bowman, Sarah Dickson, Jenna Galdun, Becky Lewis, Dana Pompa, Jesse Summers, Tenille VanHollebeke, Pam Wagher, Patrick Walrath

COMMUNICATIONS AND MARKETING

Sean Kelly
Vice President of Marketing & Communications
Gretchen Douma
Director of Marketing
John Longenbaugh
Public Relations Manager
Tasha Thomas
Communications Manager
Chris Marcacci
Group Sales Manager
August Laguio
Senior Graphic Designer
Darren Mcardel
Graphic Design Assistant

DEVELOPMENT

Kerry O'Keefe
Director of Development
Christine Aguon
Special Projects Manager
Nick Cail
Annual Fund Manager
Lindsay Powers
Development Associate
Molly Suhr
Grants Manager

Staci Towne
Development Assistant
Nicole Hopkins
Development Projects Assistant

FINANCE

Dean Frerker
Director of Finance
Rory Krout
Controller
Joanna McRho
Accountant
Aleksandra Zigta
Accounts Payable Coordinator
Eveline Kurniawan
Accounting Assistant

ADMINISTRATION

Lisa Graham
Office Manager/Receptionist
Mary Dellasega
Special Projects

INFORMATION TECHNOLOGY

Britt East
Director of IT
Jamie Eby
Systems Administrator
Drew Franz
Web Producer
Susan Zukov
Program Manager
Melisa Bumpus
Desktop Support Specialist

EDUCATION AND OUTREACH

Anya Rudnick
Director of Education and Outreach
Connie Corrick
Community Programs Coordinator
Orlando Morales
Education Programs Coordinator
Brian Kerrick
Education Assistant

OPERATIONS

Catherine Johnstone
Director of Facility Operations
Alda E. Shepherd
Facility Operations Assistant
Katy Coale
Front of House Manager
Melissa Welker
Jennifer Simon
Assistant House Managers
Dale Arp, Lisa Books, Alicia Hall, Lila Hughes, Bobby Mañuva
Head Ushers
Mike Charg
Assistant Head Usher
Natalie Cline, Ellen de Groat, Alison Lyons-Houlihan, Gretchen Meyer, Donna Nicholson
Producer's Club Concierges
Sue Campbell, Meg Gray, Mary LaVassar, Kathy Parker, Marty Weston, Paula Wharton
Concierges
Christine Jew
Usher and Stage Door Scheduler
Jim Malatak
Volunteer Coordinator

USHER STAFF

Kathleen Bryant, Sue Campbell, Shari Carlson, Mike Chang, Jenniey Chesnut, Frank Chinn, Jessica Davis, Barbie Denend, Meg Gray, Kristyn Grim, Karen Hall, Chris Halstead, Nancy Harris, Jennifer Hayes, Matt Hudson, George James, Helen Cobb Jones, Madelyn Jones, Adam Lahm, Nancy LaRoque, Emily LaVassar, Mary LaVassar, Beite Lu, Jeff Markwardt, Tess Martin, Tony Mazzella, Trez McBean, Sue Moser, Angela Neice, Steve Overfelt, Bill Parker, Kathy Parker, Sacha Peet, Erin Pike, Sue Pozo, Kris Raftis, Lauren Ruhl, Scott Seramur, Laud Tetteh, Marty Weston, Paula Wharton, Shira Wilson

STAGE DOOR/ SECURITY STAFF

Jessica Davis, Karen Hall, George James, Christine Jew, Erik Knauer, Dean LaRoque, Meg Plimpton, Kristin Zetterstrom, Marshall Vandiver

ATTORNEYS

For The 5th Avenue Theatre:
Levin Plotkin & Menin
Loren H. Plotkin and Susan Mindell
John W. Hanley, Jr.

PRODUCTION

Andrew G. Luft
Production Supervisor
Mo Chapman
Production & Operations Coordinator
Mark Schmidt
Technical Director
Evan Ritter
Assistant Technical Director
Laurel S. Horton
Head Carpenter
Brooksie
Production Carpenter
Ken Berg
Automation Carpenter
Jason Balter
Assistant Carpenter
John Hudson
Head Flyman/Rigger
Dave McCawley
Production Flyman
Sean Callahan
Head Electrician
William Rearick
Assistant Electrician
Stephen A. Graham
Key Electrician
Ross M. Brown
Key Electrician
Karen Katz
Head Sound Engineer
James Rudy
Assistant Sound Engineer
Mike Miller
Key Sound Engineer
Diana J. Gervais
Production Property Master
Stephen P. Pozywio
Property Master
Tristan E. Hansen
Assistant Property Master
Lynda Salisbury
Costume & Wardrobe Supervisor

Deborah Engelbach
Costume Assistant/Specialist
Marlys McDonald
Wardrobe Master
Randy Werdal
Assistant Wardrobe Master
Gillian Paulson
Cutter/Draper
Etai Alvez
Master Tailor
Christopher Moad
Assistant to Costume Supervisor/Shop Manager
Victoria Stubbs
Lead Stitcher
Margaret Melvin
Ruth Nicklaus
Robin Montero
Stitchers
Mary Jones
Head Hair and Make-up
Stephanie Davies
Assistant Hair and Make-up
Heather Sincic
Stylist
Aime Palmer
Charge Artist
Brian Ainslie
Head Builder

DIRECT SALES/ TELEFUNDRAISING

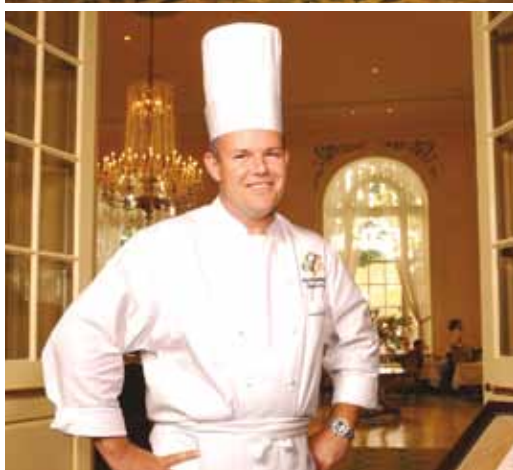
Star Zatine
Direct Sales/Telefundraising Manager
Lindsay Parriott
Assistant Direct Sales/Telefundraising Manager
Susan Ballsun, Stephen Braden, Nicol Cabe, Darren Camp, Dee Carey, Jeff Fugami, Noni Garris, Joyce Hanin, Wilda Heard, Virginia Jackson, Marcus Krigbaum, Peter Rollins, Ian Shelley, Devin Williams
Customer Service Representatives

INTERNS

Emily Feliciano
Artistic Producing

SERVICES

ACCO • ABM Janitorial Northwest • Alphagraphics • BHV Design Lab • Capital Grille • Chris Bennion • Daily Grill • Dennis Warshall Art and Events • Eden Pest Control • Evergreen Fire and Safety • Fantasy Finishes • Global Carpet Care • Mailhandlers • Mayflower Park Hotel • McCallum Print Group • McKinstry • Minuteman Press • Palomino • Prime Electric • Rainier Building Services • Standard Parking • Tony's Events and Catering • Topper's English Floral Design • Unico Properties • Union Square Garage • Walter E. Nelson Co. • Whitman • Zee Medical Service



THE *Fairmont*
OLYMPIC HOTEL
SEATTLE

May we suggest a little drama with your musical?

Chef Gavin Stephenson will script a special menu in honor of each 5th Avenue show this season. Skillfully prepared and served by The Georgian's well-rehearsed cast and crew, the three-course, pre-theatre menu is \$49 and includes valet parking for the evening. Our proximity to the theatre makes the offer even more dramatic.

For reservations call 1.206.621.7889 or visit www.fairmont.com/seattle.