

# encore

MAY 2011

a r t s   p r o g r a m s

FEB 4 - MAY 1

*Vanities: A New Musical*

APR 29 - MAY 29

*The Prisoner of Second Avenue*

JUN 17 - JUL 17

*Pilgrims Musa and Sheri in the New World*

JUL 29 - AUG 28

*In the Next Room, or the vibrator play*

SEP 9 - OCT 9

*Mary Stuart*

OCT 21 - NOV 20

*Double Indemnity*



A Contemporary Theatre

A THEATRE OF  
NEW IDEAS

## The Prisoner<sup>of</sup> Second Avenue

by Neil Simon  
Directed by Warner Shook



Kurt Beattie  
*Artistic Director*

Carlo Scandiuzzi  
*Executive Director*

ACT  
*A Contemporary Theatre presents*

# The Prisoner of Second Avenue

by Neil Simon  
Directed by Warner Shook

*Beginning April 29, 2011  
Opening Night May 5, 2011*

This production is brought to the stage with the generous support of individual donors  
Margaret Stanley and the late Thomas P. Bleakney.

Special thanks to our Production Sponsor, Starbucks, and our premiere caterer  
Tuxedos and Tennis Shoes Catering and Events.



TUXEDOS AND TENNIS SHOES  
CATERING AND EVENTS

*Seasonal Support Provided By:*



A Contemporary  
Theatre Foundation

Eulalie Bloedel Schneider  
Artists Fund



THE SHUBERT  
FOUNDATION INC.

The Andrew W. Mellon Foundation

THE JOHN GRAHAM FOUNDATION

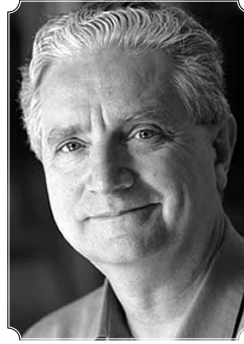
THE PRISONER OF SECOND AVENUE is presented by special arrangement with SAMUEL FRENCH, INC.

## Welcome To ACT

*"In this 1971 play, Neil Simon's portrait of a beleaguered urban everyman eerily evokes many of the same quandaries faced by middle class professional people now."*

The work of any major playwright takes on new vitality and unexpected resonances as time marches on. An excellent example of this is Neil Simon's *The Prisoner of Second Avenue*. In this 1971 play, his portrait of a beleaguered urban everyman eerily evokes many of the same quandaries faced by middle class professional people now. Unemployment, rising lawlessness, societal paralysis and dysfunction, and a lack of intuition about what to do about it combine to generate a painfully recognizable picture.

When I revisit his best plays, it seems to me that Simon's craft as a comic writer is more and more evident. There aren't many playwrights, today or in the past, who can so reliably create humor out of *La Condition Humaine*. Simon started as a sketch and joke writer for the great comics Sid Caesar and Phil Silvers. When he began to write plays with *Come Blow Your Horn*, he quickly discovered that sketch writing and playwriting were not the same thing. He labored hard and long to find out how the much more demanding form of a play needs to spin itself out over a few hours, and hold an audience. I watched him work on *London*



*Suite* at the Seattle Rep back in 1994, and was enormously impressed with his professionalism. He sat in the audience nearly every performance, and listen carefully to how they were responding to the play, taking notes and making revisions through the entire run. For Simon, the acid test for his dialogue, indeed for the overall conception of the play, was whether or not the audience was responding; and if they weren't laughing where he intended them to be, he was objective enough to take responsibility for what wasn't working and to relentlessly tinker with it until it was right. Simon has a reputation as a writer of light comedy, but in fact, *The Prisoner of Second Avenue* promotes a decidedly dark view of modern urban civilization, and it's Simon's particular achievement here that he places us so painfully in the middle of how impossible our lives sometimes really are, and then uses his immense comedic gifts to offer us the ultimate coping mechanism — the saving grace of laughter.

A handwritten signature in black ink that reads "Kurt Beattie".

Kurt Beattie, Artistic Director

## Table of Contents

A - 1	Title Page	A - 6	Program Notes	A - 11	Special Thanks
A - 2	Welcome	A - 8	Who's Who	A - 13	ACT Circle of Donors
A - 3	The Company	A - 10	Giving Message	A - 16	Board of Trustees
A - 4	Up Next	A - 11	Producing Partners, Special Fund Donors		ACT Staff
A - 5	Director's Note				

# The Company

## Cast (in alphabetical order)

Anne Allgood	Edna Edison
John Aylward	Harry Edison
Julie Briskman	Jessie
Kimberly King	Pearl
Cynthia Lauren Tewes	Pauline
R. Hamilton Wright	Mel Edison

## Creative Team

Warner Shook	Director
Matthew Smucker	Scenic Designer
Deb Trout	Costume Designer
Rick Paulsen	Lighting Designer
Brendan Patrick Hogan	Sound Designer
Susannah Scott	Assistant Lighting Designer
JR Welden	Stage Manager
Mike Bowers	Production Assistant

## Setting:

Upper East Side Apartment, Manhattan, New York City, 1971

This performance runs one hour and forty minutes with one intermission.

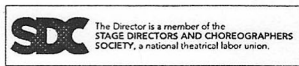
The Actors and Stage Managers in this production are members of Actors' Equity Association, the Union of Professional Actors and Stage Managers in the United States.

Audience members are cordially reminded to silence all electronic devices such as cell phones, watch alarms, and pagers prior to the performance.

All forms of photography and the use of recording devices are strictly prohibited.

Please do not walk on the stage before, during or after the show.

ACT operates under agreements with the following:



**About the Playwright~** Neil Simon was born in the Bronx on the Fourth of July in 1927. After a brief military service at the end of World War II, he began writing for radio and television. His first play was *Come Blow Your Horn* (1961), followed by the book of the musical *Little Me* (1962). Other plays include: *Barefoot in the Park* (1963); *The Odd Couple* (1965); *The Star-Spangled Girl* (1966); *Place Suite* (1968); *Last of the Red Hot Lovers* (1969); *The Gingerbread Lady* (1970); *The Prisoner of Second Avenue* (1971); *The Sunshine Boys* (1972); *The Good Doctor* (1973); *God's Favorite* (1974); *California Suite* (1976); *Chapter Two* (1977); *I Ought to Be in Picture* (1980); *Fools* (1981); *Brighton Beach Memoirs* (1983); *Biloxi Blues* (1985); *Broadway Bound* (1986); *Rumors* (1988); *Lost in Yonkers* (1991); *Jake's Women* (1992); *Laughter on the 23<sup>rd</sup> Floor* (1993) and *London Suite* (1994). He has written the books for the musicals *Sweet Charity*; *Promises, Promises*; *They're Playing Our Song* and *The Goodbye Girl*. Besides adapting several of his plays for the movies, he has written the screenplays for *The Out-of-Towners*; *The Heartbreak Kid*; *Murder by Death*; *The Cheap Detective*; *Seems Like Old Times*; *Only When I Laugh*; *Max Dugan Returns*; *The Slugger's Wife* and *The Marrying Man*. He has won Tony Awards for *The Odd Couple* in 1965, *Biloxi Blues* in 1985 and *Lost in Yonkers* in 1991, which also received the Pulitzer Prize for Drama. He is a member of the Dramatists Guild and the Writers Guild of America and divides his time between New York and Los Angeles. His autobiography *Rewrites: A Memoir* was published in 1996.



A quirky modern  
romantic comedy  
celebrating the  
pilgrim in all of us.

June 17 – July 17

# Pilgrims Musa and Sheri in the New World

by Yussef El Guindi  
Directed by Anita Montgomery



*Voices of Young Women*

Short Stories  
Live at  
Town Hall



CENTRAL HEATING  
LAB EVENT

May 8



Hedgebrook's  
Women  
Playwrights  
Festival



CENTRAL HEATING  
LAB EVENT

May 16



*The Perfect Crime*

Seattle  
Confidential



CENTRAL HEATING  
LAB EVENT

May 9



*Electricidad*

eSe  
Teatro



CENTRAL HEATING  
LAB EVENT

May 20-21

Buy tickets online, and see what else we have coming up!

Or, see it all with an ACTPass!  
Only \$25 a month.



ACT | A Contemporary Theatre | [acttheatre.org](http://acttheatre.org) | (206) 292-7676 | 700 Union Street, Downtown Seattle

# A BRIEF TRIBUTE TO

## R. Hamilton Wright and John Aylward

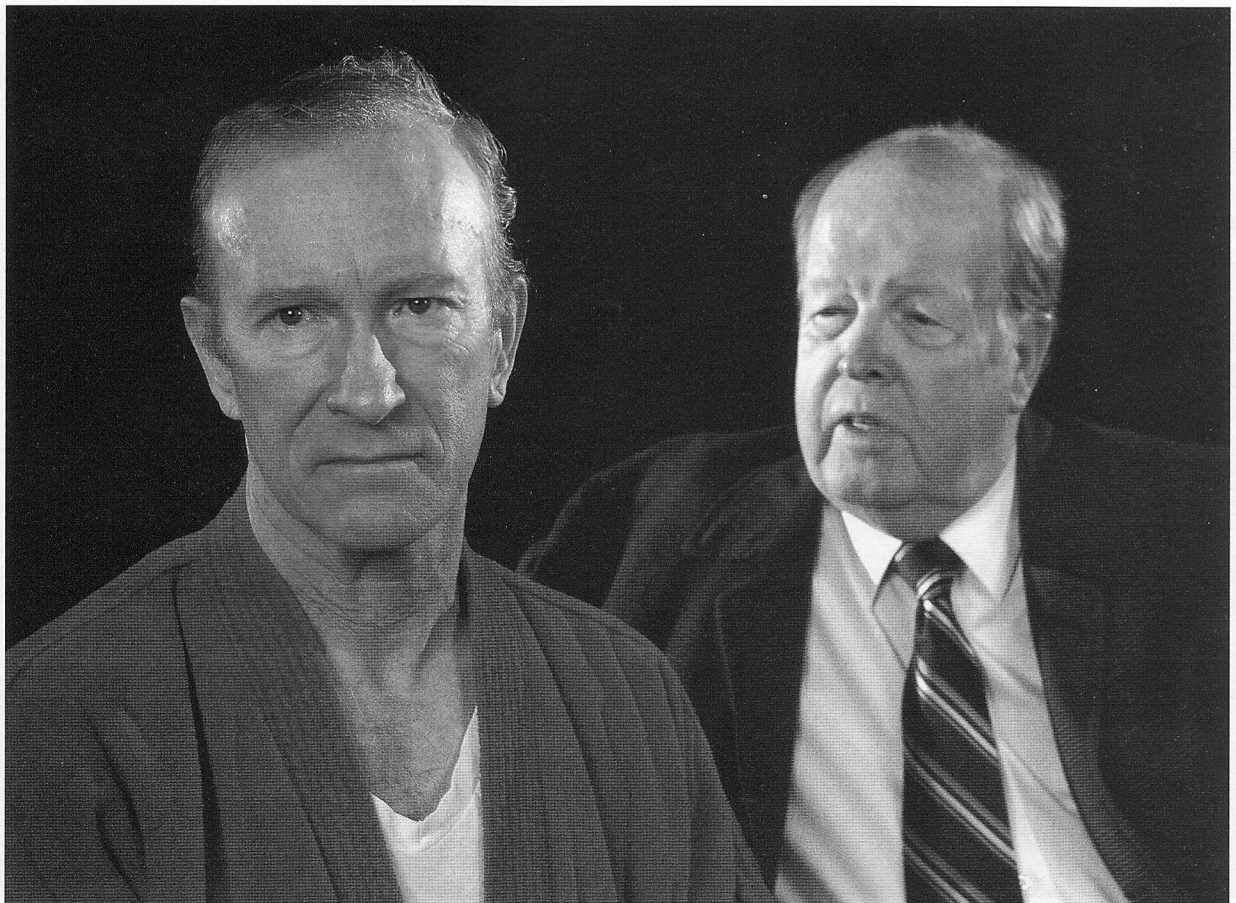
*Bob Wright, John Aylward, and I go back 26 years.*

So a few months ago, when the Seattle Rep honored the two of them at their annual Gala, I was asked to write a short tribute. Since you are seeing them tonight (or this afternoon) as brothers in Neil Simon's play, I thought I'd share my remarks about these two venerable mainstays in the Seattle theatre scene who have enriched our lives for so long.

"Lucky me. Bob Wright played the lead in the first play I ever directed in Seattle: *Beyond Therapy* at the Empty Space in 1985. John Aylward played the lead in the second play I directed locally: *Vikings* at Intiman in 1986. They have both been making me look good ever since.

Bob and I have collaborated on countless projects over the years. John and I went on to make our Broadway debuts together with *The Kentucky Cycle*. Both are real gentlemen of the theatre: total pros who continue to expand their impressive talents and who never EVER just rest on their laurels. They are no nonsense, cooperative, challenging artists who make each project they're in just that much better. Both are blessed with intrinsically good taste, impeccable timing and a delicious sense of humor. In short, this is a director's dream come true."

Warner Shook,  
Director, *The Prisoner of Second Avenue*







# NEW YORK CITY

## The Cost of Living in 1971

### Transport

#### *NYC Taxis:*

\$0.60 first 1/5 of a mile,  
then \$0.10 per 1/5 of a  
mile; wait time \$0.10/72  
seconds

\$.50/mile, \$.08/minute;  
average fare around \$2.30

#### *Bus fare:*

\$0.30 everywhere

*Single-trip subway fare:*  
30-35 cents

### Food goods

*Bread:* 24 cents/lb

*Steak :* \$1.30/lb

*Coffee:* 91 cents/lb

*Sugar:* 64 cents/5lbs

### Cost of living

*Typical psychiatric session:*  
\$50/hour

*Doctor's office visit:* \$25

*Movie ticket:* \$1.70

*Average monthly rent:* \$150

# A CONVERSATION BETWEEN

Anita Montgomery, ACT's Literary Manager and Warner Shook, the director of *The Prisoner of Second Avenue*.

**In your long and varied directing career, *The Prisoner of Second Avenue* is the only play of Neil Simon's you have taken on. What was the biggest surprise or misconception you encountered when confronted with his work?**

I think my biggest surprise was how well constructed the play is. I just marvel at how he can write such funny dialogue that's also trenchant about a situation. You're laughing but you're wincing at the same time. I have great respect for the man – I would love to do more Neil Simon plays.

Not only is it timely, but it's going to surprise people, because I think everyone thinks, "oh, Neil Simon, 'bada bing, bada boom.'" It's all about the jokes. Well yes, the man knows how to construct a joke – he's brilliant at it, but he also knows how to construct a play. This particular play is beautifully constructed, and I predict it's going to surprise a lot of people. And yes, it's very funny with its pertinence.

**Neil Simon has said that every play he writes is a drama with "comic moments". How does that sit with you, and does *The Prisoner of Second Avenue* fit that description?**

It is a drama with comic moments; a lot of comic moments. But it's comedy that comes from pain and frustration, of being locked into a life that no longer works. It's a microcosm for so much of what America is going through today.

**John Lahr, in his wonderful profile of Simon in the May 2010 issue of *The New Yorker* magazine said that 'Comedy is often relegated to the kids table of American Theatre'. Can you comment on that statement?**

I think he's absolutely right, and I would like to see some of those people that relegate [comedy] to the kids' table pull it off. The great quote, "dying is easy, comedy is hard." is apt. It's an instinctual thing. I know how to direct comedy. I can set up a joke onstage, or a comic moment; I can say, "If you go to the door, turn, say the line, and then close the door, you'll get a laugh." It's a very instinctive craft, comedy, and as Rose says in *Gypsy*, "Ya either got it, or ya ain't." I've got a cast of wonderful actors, who've all "got it". Because comedy looks like it's effortless if it's done right, it always takes a backseat to *Long Day's Journey Into Night*—that's got so many laughs in it, doesn't it? I love doing comedy, and I love working with actors who understand how to do it, and I've got six of the best at doing just that.

**Can you talk a bit about how you feel this distinctly New York story will resonate with Seattle audiences?**

Though it takes place in New York, the play is not just a New York story. This is an American story now. Unfortunately, we have all been whacked in the last few years, not only in our pocketbooks but in our belief systems. We're all looking for something to hold onto, to believe in, that we can count on again here in America. I think that resonates in any city in the United States.

"I don't write social and political plays, because I've always thought the family was the microcosm of what goes on in the world. I write about the small wars that eventually become the big wars." Neil Simon, *The Paris Review* —1992



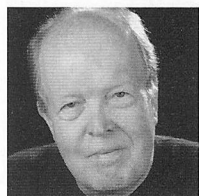
# Who's Who in *The Prisoner of Second Avenue*



## Anne Allgood

(Edna Edison) has happily appeared at ACT in *Rock 'n' Roll*, *Das Barbecu!*, *The Women*, *The Clean House*, *Vincent in*

*Brixton*, *Eurydice*, *Miss Witherspoon*, and *A Christmas Carol*. On Broadway, she appeared in *Carousel*, *The Sound of Music*, *The Most Happy Fella*, *Imaginary Friends* and *Beauty and the Beast*. She has toured the U.S. in *Urinetown*, *Floyd Collins*, *Parade*, *Evita*, and more. Anne's Seattle credits include *You Can't Take It With You*, *Bad Dates* and *The Constant Wife* at Seattle Repertory Theatre; *Cymbeline* at Intiman; *Candide*, *A Christmas Story*, *Sunday in the Park with George*, *Memphis*, *Company*, *Gypsy* and *The Secret Garden* at The 5th Avenue Theatre; and *Getting Near to Baby* and *Sleeping Beauty* (among others) at Seattle Children's Theatre. She has appeared at regional theatres coast to coast and will play the title role in *Mary Stuart* at ACT this fall.



## John Aylward

(Harry Edison) Aylward is always happy to return to ACT, where he got his first job as an actor in 1967. Some highlights over the years

at ACT include *Philadelphia*, *Here I Come* (1969), *Marat-Sade* (1969), *When You Comin' Back*, *Red Ryder?* (1975), *The Time of Your Life* (1976), *King Lear* (1985), *On the Razzle* (1986), *Glengarry Glen Ross* (1987), *Chorus of Disapproval* (1988), *God's Country* (1988), *Man of the Moment* (1994) and *Death of a Salesman* (1998). Other Seattle credits include *Tooth of Crime* and *Ronnie Bwana*, *Jungle Guide* at the Empty Space, where he was a founding member; *Waiting for Godot* at Intiman; and *The Adding Machine* and *Dr. Jekyll & Mr. Hyde* at the Bathhouse. As a company member at Seattle Repertory Theatre for 10-plus years, Aylward had the opportunity to play leading roles in *The Miser*, *Curse of the Starving Class*, *Inspecting Carol*, *House of Blue Leaves*, *A Flea in Her Ear* and *The Real Inspector Hound*, among many others. He's also performed in many other theatres across the US and Canada, including the Oregon Shakespeare Festival in Ashland (as Richard III), the Dallas Theatre Center (*Loot*), the Manitoba Theatre Centre

(*Born Yesterday*), the Cincinnati Playhouse in the Park (*Hedda Gabler*), Berkeley Rep, Indianapolis Rep, the Centaur Theatre in Montreal, the Charles Playhouse in Boston, the Old Globe in San Diego, and on Broadway in *The Kentucky Cycle* directed by Warner Shook. Aylward's film and television credits include *ER*, *The West Wing*, *Mad Men*, *The Practice*, *Boston Legal*, *Path to War*, *Thirteen Days*, *North Country*, *Instinct* and *Teenage Mutant Ninja Turtles III*, among many others.



## Julie Briskman

(Jessie) returns to ACT, where she most recently appeared as Eppie Lederer in *The Lady With All the Answers*. Other roles at ACT

include Sylvia Fowler in *The Women*, the Brit in New York/Palestinian Academic in *Stuff Happens*, Louise Maske in *The Underpants*, Lotty in *Enchanted April*, Jane Hopcraft in *Absurd Person Singular*, and Jo/Mae in *Dirty Blonde*. Other local credits include *The Imaginary Invalid*, *The Beard of Avon*, *Spinning into Butter*, and *As You Like It* (Seattle Repertory Theatre); Seattle Children's Theatre, and The 5th Avenue Theater. Most recently, she appeared as Jenny Diver in Seattle Shakespeare Company's highly acclaimed production of *The Threepenny Opera*. Briskman was a member of the Guthrie Theater acting company for seven seasons, where her credits include Olga in *Three Sisters*, and the title role in *Molly Sweeney*. She has performed around the country at theaters including Milwaukee Repertory Theater, Trinity Repertory Company, Portland Center Stage, Arizona Theatre Company, Children's Theatre Company of Minneapolis, and the Old Globe.



## Kimberly King

(Pearl) King's recent work includes the premieres of ACT Steven Dietz's *Becky's New Car* and Craig Lucas's *Prayer For My Enemy* (Dolores),

directed by Bart Sher at Intiman, *Doubt* (Sister Aloysius) at San Francisco Bay Area TheatreWorks. She was also nominated for a Critics' Circle award for Mary Tyrone in *Long Day's Journey Into Night* at San Jose Repertory. King has worked as a leading ensemble member with theatres across the country including Berkeley Repertory, American

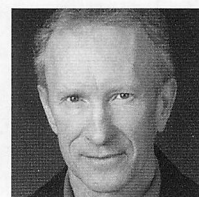
Conservatory Theatre, Hartford Stage, McCarter Theatre in Princeton, Houston's Alley Theatre, South Coast Rep (premiere of *Hold, Please* by Annie Weisman), the Mark Taper Forum (Gretta in the Broadway production of James Joyce's *The Dead*). King has sung opera, musical theatre and jazz. Her cabaret is called *Savoir Faire*. Her website is [www.greencatbb.com](http://www.greencatbb.com)



## Cynthia Lauren

**Tewes** (Pauline) Tewes is happy to be back at ACT. She has appeared here in *Man of the Moment*, *Side Man* and *A Christmas Carol*. Other

local theatres include the old Tacoma Actors Guild, the Empty Space Theatre, Intiman and Seattle Repertory Theatre. She is currently a proud member of the board and an ensemble member of the brand new West Sound Repertory Theatre. She has worked for more than 35 years in television, film and voice work. When not onstage, she acts as sous chef for executive chef Patrick Fagan at Green City Catering.



## R. Hamilton Wright

(Mel Edison) was last seen at ACT as Palmer in Steven Dietz's *Yankee Tavern*. Wright has been a professional actor for 35 years and

many of his favorite shows have been at ACT, among them: *Red Noses*, *A Chorus of Disapproval*, *The Pillowman*, *Absurd Person Singular*, *Bach at Leipzig*, *On the Razzle*, *Jumpers*, *The End of the World*, *The Revenger's Comedy* and *Stuff Happens*. Wright is co-adaptor - along with his old friend David Pichette - of ACT's upcoming world premiere of James M. Cain's *Double Indemnity*. He lives in a small house north of Ballard with his amazingly talented wife Katie Forgette.

**Warner Shook** (Director) is delighted to return to ACT, where he previously directed *The Women*, *Born Yesterday*, *Enchanted April* and Edward Albee's *The Goat*. From 1993-2000 he was artistic director of Intiman Theatre, directing *Angels in America*, *The Little Foxes*, *Three Tall Women*, *The Royal Family*, *Love! Valour! Compassion!*, *Who's Afraid of Virginia Woolf?*, *Faith Healer*, and many more. At Seattle Rep, he directed *Doubt* and *You Can't Take It With You*. On Broadway, Shook directed

## Who's Who in *The Prisoner of Second Avenue*

*The Kentucky Cycle* (winner, Pulitzer Prize) and Angela Lansbury in *This is On Me...An Evening of Dorothy Parker*. His productions have been seen at The Mark Taper Forum, South Coast Repertory, The Kennedy Center, The Long Wharf, plus dozens more.

**JR Welden** (*Stage Manager*) has stage managed *The Lady With All the Answers*, *The Female of the Species*, *Eurydice*, *A Marvelous Party*, *Souvenir*, *The Underpants*, *Mitzi's Abortion*, *Miss Witherspoon*, and *A Christmas Carol* at ACT. For 10 seasons, he staged managed at Intiman Theatre on many productions, including *The Grapes of Wrath*, *The Mystery of Irma Vep*, *The Dying Gaul*, *The Servant of Two Masters*, *Nickel and Dime* (also Mark Taper Forum, Los Angeles), *The Chairs*, *The Last Night of Ballyhoo*, *Full Gallop*, and *The Mandrake Root* with Lynn Redgrave. At Seattle Repertory Theatre, his credits include *Betrayal*, *Blue Door*, *The Chosen*, *Stop Kiss*, *Things Being What They Are*, *The Beard of Avon*, *Game of Love and Chance*, *Golden Child*, *Design for Living*, and *Pygmalion*.

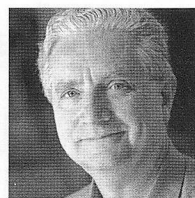
**Matthew Smucker** (*Scenic Designer*) is pleased to return to ACT where his work has included designs for *Vanities*, *Yankee Tavern*, *The Trip to Bountiful*, *Rock 'n' Roll*, *Below the Belt*, *Jekyll & Hyde*, *Eurydice*, *Fathers and Sons*, *The Women*, *The Clean House*, *The Pillowman*, *Wine in the Wilderness*, *Flight*, *Bach at Leipzig*, *The Ugly American*, and *Jumpers*. Smucker's designs have appeared locally at The 5th Avenue Theatre, Seattle Repertory Theatre, The Intiman Theatre, Seattle Children's Theatre, New Century Theatre Company, Book-It, The Empty Space, Village Theatre, and Tacoma Actors Guild, and nationally at Arizona Theatre Company, Portland Center Stage, San Jose Rep, Kansas City Rep, and Childsplay Theatre. Smucker was a founding ensemble member of Deus X Machina and a company member and resident designer with Annex Theatre. Smucker received his MFA from the UW School of Drama.

**Deb Trout** (*Costume Designer*) recent designs include: ACT's *The Female of the Species*, Seattle Repertory Theatre's *Of Mice and Men* and *God of Carnage*, Seattle Opera's *Lucia di Lammermore*, and Seattle Children's Theatre's *The Brementown Musicians*. Other theatre credits include: Actors Theatre of Louisville, Atlanta's Alliance Theatre, Arizona Theatre,

Denver Center Theatre, Intiman Theatre, Minneapolis Children's Theatre, Oregon Shakespeare Festival, Juneau's Perseverance Theatre, Portland Center Stage, Shakespeare Santa Cruz, Syracuse Stage, and Yale Repertory Theatre. Trout co-founded the New York millinery company Mackey and Trout, holds an MFA from the Yale School of Drama, and teaches design at the University of Washington.

**Rick Paulsen** (*Lighting Designer*) is delighted to be returning to ACT, where his lighting was first seen in 1984. Since then, Paulsen has lit dozens of shows at ACT including *First Class*, *Vincent in Brixton*, *Fiction*, *The Odd Couple*, *Lonely Planet*, *Becky's New Car*, *Jekyll and Hyde* and *Below the Belt* as well as last season's *The Trip to Bountiful* and *Yankee Tavern*. Paulsen's work has appeared all around Seattle and across the nation. Some recent work of note includes *The Borrowers* and *The Brementown Musicians* at Seattle Children's Theatre, *Honus and Me* and *A Year with Frog and Toad* at Childsplay, and *Pride and Prejudice* at the Denver Center. He is, most importantly, devoted to his wife Roberta and daughter Paige.

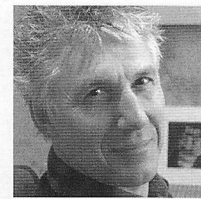
**Brendan Patrick Hogan** (*Sound Designer*): Hogan is the Staff Sound Designer at ACT. Designs for ACT include *Dr. Jekyll & Mr. Hyde*, *Below the Belt*, *Rock & Roll*, *Das Barbecü*, *The Female of the Species*, *Yankee Tavern* (Gregory Award nomination) *The Lady With All the Answers*, and *The Lieutenant of Inishmore*. Other designs and compositions for stage include *Mr. Marmalade*, *God's Ear*, *Titus* (Seattle Times Footlight Award), and *RoboPop!* (Gregory Award nomination) at Washington Ensemble Theatre; *Two By Pinter* at Shadow & Light; *The River Why* at Book-It Repertory Theatre; and *Chamber Cymbeline* at Seattle Shakespeare Company. He performs regularly at bars and clubs across the Northwest with Miss Mamie Lavona the Exotic Mulatta and her White Boy Band and The Bad Things. He is married to actress Samara Lerman.



**Kurt Beattie**  
(*Artistic Director*)

Beattie's past productions at ACT include *The Lieutenant of Inishmore*, *Rock 'n' Roll*, *Becky's New Car*, *Intimate Exchanges*, *First Class*, *The Pillowman*, *Mitzi's Abortion*, *The Underpants*, *Vincent in*

*Brixton*, *Bach at Leipzig*, *Black Coffee*, *Alki*, *Fuddy Meers*, *Fully Committed*, *Via Dolorosa* and *A Christmas Carol*. Elsewhere he has directed *Things Being What They Are* and *Art* at Seattle Repertory Theatre, as well as productions at The Empty Space, Intiman, the Hugo House, and the University of Washington. As an actor, he has appeared in leading and major roles at ACT, Seattle Repertory, Intiman and The Empty Space. Beattie was the co-recipient of the 2004 Theatre Puget Sound Gregory A. Falls Sustained Achievement Award. This season he'll direct *In the Next Room*, or the vibrator play and *Double Indemnity*.



**Gian-Carlo Scandiuizzi**

(*Executive Director*) is a founder of Agate Films and Clear Pictures, producing such films as *Prototype*, *Dark Drive*,

*Outpatient* and *The Flats* and Indieflix, a distribution company. In 1979, Scandiuizzi started Modern Productions, bringing to Seattle such legendary bands as The Police, Devo, Nina Hagen, Iggy Pop, The Ramones, John Cale, Robert Fripp, James Brown, Muddy Waters and many more. He performed in several plays at The Empty Space Theatre including *Aunt Dan and Lemon*, *The Return of Pinocchio* and *Dracula*. In the early '80s, he collaborated with many Seattle performance artists such as Norman Durkey, Alan Lande and Jesse Bernstein. He also acted in various films including *Bugsy*, *The Public Eye*, *Another You*, *Casanova's Kiss* and *Killing Zoe*. He graduated from the Ecole Supérieure D'Art Dramatique of Geneva.





## When you make a gift to ACT . . .

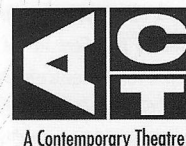
YOU support and sustain the creative ecosystem here in our great city. Plus, ACT donors receive special theatre-going experiences, pre and post play parties with fellow donors and artists, and opportunities to take a deeper look at our productions. Help us reach our spring campaign goal of \$450,000 by June 31. Thank you for considering a gift to the theatre. It truly couldn't be done without people just like YOU!

Making a gift to ACT is easy  
Visit [www.acttheatre.org/donate](http://www.acttheatre.org/donate)

Call: (206) 292-7660 ext. 1331

Mail: ACT Theatre 700 Union Street Seattle, WA 98101

Or leave a gift in one of our secured lobby donation boxes.



# Special Fund Donors

## **ACT Endowment Fund Donors**

*ACT's endowment is administered by A Contemporary Theatre Foundation.*

Buster & Nancy Alvord • Joan & Larry Barokas • Michael Corliss-Investco • Katharyn Alvord Gerlich • Becky & Jack Benaroya • Charles Blumenfeld & Karla Axell • The Ewert Family • Bruce & Dawn Goto • William Randolph Hearst Endowed Fund for Education & Outreach Programs • Kreielsheimer Remainder Fund • Doug & Nancy Norberg • Sally Pence • Katherine & Douglass Raff • Brooks & Suzanne Ragen • Herman & Faye Sarkowsky • David E. & Catherine E. Skinner • Kayla Skinner • Estate of Stuart Smailes • David & Joyce Veterane • The Peg & Rick Young Foundation

## **Special Thanks**

*ACT gratefully acknowledges the following for their contributions to this production and season:*

Keith Johnsen, Daqopa Brands LLC • Moby's Restaurant • Seattle Children's Theatre • Morgan Rowe • Alysian Bedford • Chris Ensweiler • Nicole Fierstein • Daniel Guttenberg • David Hsieh • Gretchen Krich • Maggie Lee • AJ Epstein • Seattle Repertory Theatre • Market Place Salon & Day Spa • Emerald City Shoes & Northgate Cobblers • Albert Lee Appliance • UW Drama

## **New Works For The American Stage — A Special Thanks to ACT's Commissioners**

ACT's New Works for the American Stage commissioning program attracts commissioners who want to come in direct contact with the creative process. Donors get to know leading playwrights and hear their earliest drafts, watching as ideas become scripts. Our commissioners are venture capitalists of new ideas, and we commend their bravery and commitment to new work.

**Becky's New Car**  
by Steven Dietz

Commissioned by  
Charlie Staadecker  
in honor of Benita  
Staadecker

**Hell Leaves Odessa**  
by Julie Marie Myatt

Commissioned by  
Art Wahl in honor of  
Eva Wah

**How to Remove  
Blood from a Carpet**  
by Laura Schellhardt

Commissioned by  
Paul and Paula Butzi

**TITLE TBA**  
by Jason Grote

Commissioned by  
Gian-Carlo and  
Eulalie Scanduzzi

**Maggie Cassidy**  
by Chris Jeffries

Commissioned by  
Dennis Forsyth  
in honor of Elaine  
Spencer

**The Final Days of  
NegroVille**  
by Keith Joseph Adkins

Commissioned by  
Gian-Carlo and  
Eulalie Scanduzzi

## **Producing Partners** *ACT gratefully acknowledges the following for their contributions to this production and season:*



A CONTEMPORARY THEATRE  
FOUNDATION

amazon.com



JPMORGAN CHASE & CO.

Microsoft



NESHOLM FAMILY  
FOUNDATION



THE PAUL G. ALLEN  
FAMILY foundation  
CELEBRATING 20 YEARS

PONCHO  
artsmatter



THE SHUBERT  
FOUNDATION INC.



EULALIE BLOEDEL SCHNEIDER  
ARTIST FUND

JOHN GRAHAM FOUNDATION



# Community Partners

ACT gratefully recognizes the following corporate, foundation, and government agencies for their generous support of our 2010 & 2011 programs. Without such tremendous community support, ACT would not be able to offer outstanding contemporary theatre, in-school educational programming, or community based outreach.

*This list reflects community giving from January 1, 2010 through March 31, 2011.*

## Executive Underwriters

(\$100,000+)

ArtsFund  
Eulalie Bloedel Schneider Artists Fund

## Season Sponsors

(\$50,000 - \$99,999)

Office of Arts & Cultural Affairs, City of Seattle  
John Graham Foundation  
The Andrew W. Mellon Foundation  
The Shubert Foundation, Inc.

## Producing Partners

(\$25,000 - \$49,999)

4Culture  
Amazon.com Inc.  
Ballinger Family Foundation  
The Boeing Company  
JPMorgan Chase Foundation  
Nesholm Family Foundation  
The Paul G. Allen Family Foundation

## Performance Partners

(\$10,000 - \$24,999)

Columbia Crest Grand Estates\*  
Elizabeth George Foundation

Harvest Foundation  
Legacy Group\*  
Merrill Gardens  
Microsoft Corporation  
Moraine Foundation  
PONCHO  
The Seattle Foundation  
Starbucks Coffee\*  
Tuxedos and Tennis Shoes\*  
United Airlines\*  
Washington State Arts Commission  
Wells Fargo Advisors  
The Peg & Rick Young Foundation

## Stage Partners

(\$5,000 - \$9,999)

Apulent Catering and Special Events Company\*  
Norman Archibald Charitable Foundation  
Fox Foundation  
Bob & Eileen Gilman Family Foundation  
Horizons Foundation  
Joanie's Catering\*  
Responza LLC\*  
Sea-Tac Lighting & Controls, LLC\*  
TEW Foundation  
Tony's Events & Catering\*

## Benefactors

(\$1,000 - \$4,999)

A Contemporary Theatre Foundation  
Alaskan Copper & Brass Company  
Bill Speidel Enterprises  
City Hardware\*  
Daily Grill\*  
Fales Foundation Trust  
TheFilmSchool  
Graham & Dunn  
Holland America Lines\*  
K&L Gates LLP  
McAdams Wright Ragen  
Moby's Restaurant\*  
Pacific Place  
Pike Brewing Company\*  
Queen Anne Painting Company  
Seattle Steam Corporation  
Wyman Youth Trust

## Media Partners

KING-FM  
KCTS 9

\*Support provided through in-kind contributions

## The ACT Legacy Society      Contact Us



The Act Legacy Society honors those who remember ACT in their wills or other estate plans. Legacy

Society members ensure ACT's ongoing tradition of presenting the best of contemporary theatre for future generations. Even persons of modest means can make significant future gifts by using tax-advantaged estate and financial planning techniques.

Notify ACT of your arrangements by calling (206) 292-7660 ext. 1321.

### ACT, A Contemporary Theatre

Kreielsheimer Place  
700 Union St.  
Seattle, WA 98101

Administrative Office: (206) 292-7660  
Development: (206) 292-7660 x1321

### Ticket Office

In person: on performance days, the ticket office is open from noon until show time. *Closed Mondays and major holidays.*

**Phone:** (206) 292-7676, Tue.-Sun., noon – 7:00 p.m.

**E-mail:** [service@acttheatre.org](mailto:service@acttheatre.org)

**Online:** [www.acttheatre.org](http://www.acttheatre.org)

# ACT Circle of Donors

ACT would like to recognize and thank all of the individuals who have made contributions to A Contemporary Theatre. The Circle of Donors is invaluable to the success of our mission, ensuring a nurturing environment for the celebration and development of contemporary theatre. Without the generous support of the individuals in the ACT Circle, none of this would be possible.

*The following list reflects the sum of pledges and gifts made to the Annual Producing Fund by Donors in the ACT Circle between January 1, 2010 and March 31, 2011.*

## **\$100,000+**

Mrs. Nancy Alvord  
Katharyn Alvord Gerlich  
Gladys Rubinstein  
Eulalie M. & Gian-Carlo Scanduzzi

## **\$50,000 – \$99,999**

Kurt Beattie & Marianne Owen  
Linda & Brad Fowler  
Thomas P. Bleakney & Margaret Stanley  
Virginia & Bagley Wright  
Anonymous

## **\$35,000 – \$49,999**

Chap & Eve Alvord

## **\$20,000 – \$34,999**

Paul & Paula Butzi  
Jean Burch Falls  
Linda & George Ojemann  
Chuck Sitkin  
Elaine Spencer & Dennis Forsyth  
Anonymous

## **\$15,000 – \$19,999**

Becky & Jack Benaroya  
Michael & Leslie Lebeau  
Brian Turner & Susan Hoffman

## **\$12,500 – \$14,999**

Joan & Larry Barokas  
Laurie Besteman & Jack Lauderbaugh  
Barry & Colleen Scovel

## **\$10,000 – \$12,499**

Linda Brown & Larry True  
James Degel & Jeanne Berwick, Berwick Degel  
Family Foundation  
Gregory & Diane Lind  
McKibben Merner Family Foundation  
Daniel D. Ederer & Takayo Minakami  
Douglas & Nancy Norberg  
Katherine & Douglass Raff  
Carrie D. Rhodes  
Don & Colleen Stevens  
Robert & Shirley Stewart  
Anonymous

## **\$7,500 – \$9,999**

Allan & Anne Affleck  
Eliza Flug-Coburn  
Linda & Ted Johnson  
Kelly Miller & Ruthann Stolk  
Grace Nordhoff & Jonathan Beard  
Herman & Faye Sarkowsky  
John Siegler & Alexandra Read, MD  
David & Shirley Urdal  
Vijay & Sita Vashee

## **\$5,000 – \$7,499**

Sheena Aebig  
Daniel Alexander  
Lance Becker & Karen Roberts  
Sonya & Tom Campion  
Colin Chapman  
Allan & Nora Davis  
Jane & David R. Davis  
Betsy & Charles Fitzgerald  
Bob & Eileen Gilman Family Foundation  
Richard Hesik & Barbara Johns  
David & Rosalie Holcomb  
Deborah Killinger  
Josef Krebs  
Petra Franklin Lahaie  
Louise J. & Samuel B. McKinney  
Dr. Arnie & Judy Ness  
David Rose & Diane Lye  
Jean Viereck & Robert Leventhal  
Jean Walkinshaw  
Clifford & Karen Webster  
Herbie Weisse  
Dr. Sheree Wen  
Marcia & Klaus Zech  
Anonymous (2)

## **\$3,500 – \$4,999**

Salil & Rashmi Dave  
Thomas & Christine Griesa  
James & Barbara Heavey  
William & Sandy Justen  
Jane W. & James A. Lyons  
Edward Miesen  
Anonymous

## **\$2,000 – \$3,499**

Richard & Constance Albrecht  
Kermit & Danna Anderson  
Melinda & Walter Andrews  
Susan & Lauren Anstead  
Christine & Perry Atkins  
Stewart Ballinger  
Jane & Peter Barrett  
Heidi Beck  
Betty Bottler  
Ben & Marianne Bourland  
Kimberly & Kyle Branum  
Corinne A. Campbell  
D.T. Challinor  
Steven & Judith Clifford  
Theodore & Patricia Collins  
Patricia Daniels & Bill Kuhn  
Kathy & Don DeCaprio  
Lori Eickelberg  
Kevin Wilson & Emily Evans  
Natalie Gendler  
Melissa Haumerson  
Stephanie M. Hilbert

John Hill  
Heather & Grady Hughes  
Stu & Sandy Jacobson  
Katherine Ann Janeway & H.S. Wright III  
Mark & Susan Minerich  
Jason Richert  
Jo Anne & Donald Rosen  
H. Stewart Ross  
Eric and Margaret Rothchild  
Sean Shanahan & Kathleen McGill  
Debra Sinick & David Ballenger  
David E. & Catherine E. Skinner  
Carol & Ron Sperling  
Mark & Arlene Tibergien  
Annette Toutonghi & Bruce Oberg  
Jim & Kathy Tune  
Jennessa & Robert West  
Diana White  
Jane & Leonard Yerkes

## **\$1,000 – \$1,999**

Bill & Janette Adamucci  
Mr. & Mrs. Willie C. Aikens  
John Akin & Mary Stevens  
Marcia Engel  
The Joan Alhadeff Family  
Eric Bahn  
Kendall & Sonia Baker  
Victoria Bennett  
Peter & Fran Bigelow  
Alan & Sally Black  
Susan and Jeff Bland  
Nancy Buckland & John Searce  
Alyssa C. Byer  
Dr. William Calvin & Dr. Katherine Graubard  
Ronald & Leila Cathcart  
Donald Cavanaugh  
Linda & Randy Clark  
Ben & Kathy Derby  
Darrel & Nancy Dochow  
Jeannie Falls  
Jim & Gretchen Faulstich  
Denise & David Foster  
Maradel Krummel Gale  
Richard & Mary Beth Gemperle  
Gordon W. (Skip) & Midge Gilbert  
Boyd & Ann Givan  
Jeff & Kelly Greene  
Joel & Angie Gregory  
Charles & Lenore Hale  
Valerie Hamrick & Randall Whiteside  
Edgar Hansen  
Lawrence & Hylton Hard  
Dr. Benson & Pamela Harer  
Stephen B. Hilbert  
Gary & Parul Houlahan  
Joseph & Linda Iacolucci  
Judith Jesiolowski & David Thompson  
Lew & Sonia Johnson Fund  
Lisa & Norman Judah  
Margot Kenly & Bill Cumming  
Lura & David Kerschner  
Asuman Kiyak  
Joanne M. Kuhns  
George & Linda Lamb  
Steven & Anne Lipner  
Alice Mailloux  
Theodore & Mary Ann Mandelkorn  
Barbara Martyn  
Pamela Burns McCabe  
Frances Mead  
Lauren Mikov  
Terry Miller  
Dayle Moss & David Brown  
Pamela Mulken  
Bill & Mary Ann Mundy  
Nadine & John Murray  
Mardi Newman  
James Nichols  
Chris & B.J. Ohlweiler  
Kristin Olson  
Valerie D. Payne  
Nancy Pearl  
Gregg & Shelley Percich  
Mary Pigott & Roger Giesecke  
Stuart Platt & Melanie Daniels  
Alan Rabinowitz  
Brooks & Suzanne Ragen  
Ann Ramsay-Jenkins  
Marci Wing & Jeff Robbins  
David and Valerie Robinson Fund  
Evelyn Rozner & Matt Griffin  
Bill and Rae Saltzstein  
Barbara Sando  
John Saul  
Michael C. Shannon  
M. Darrel & Barbara Sharrard  
Kathleen Sneden-Cook & Jack Cook  
Charles & Benita Staadecker  
Garth & Drella Stein  
Kim Stindt & Mark Heilala  
Dana M. Stout  
Jeffrey A. Sutherland  
Tamzen Talman  
Taucher Family Foundation  
Franklin & Stephanie Thoen  
Paul G. & Mary Lou Dice Vibrans  
Chris & Tory Visser  
Renée Salant & Sam Weis  
Merica Whitehall  
The Whitsitt Family  
Scott & Shirley Wilson  
William & Jennifer Woyski  
Ann P. Wyckoff  
Anonymous (7)

## **\$500 – \$999**

Tom Alberg & Judi Beck



# ACT Circle of Donors

Jane & Brian Andrew  
 Bruce & Karen Babbitt  
 Carolyn Bechtel  
 Irving & Luann Bertram  
 John Blackman  
 Charles Blumenfeld & Karla Axell  
 Cleve & Judith Borth  
 Stanley & Barbara Bosse  
 Matthew Brantley  
 Beth & John Brennen  
 Jan Brucker & Lauren Barber  
 Jane W. Carrier  
 Carl Bunje & Patricia Costello  
 John & Arlene Carpenter  
 Steve & Midge Carstensen  
 Aline & Dennis Caulley  
 Ms. Cindy Chin  
 Clark Family Charitable Fund  
 Judy & Bob Cline  
 Arian Colachis & Ian Glass  
 Sue & Robert Collett  
 Zan & Stephan Collier  
 Frank & Joan Conlon  
 Jack Cook  
 Pamela Cople & Patrick Smith  
 Steve Coulter  
 George & Carolyn Cox  
 Eiron & Patricia Cudaback  
 Chris Curry  
 Lois & King Curtis  
 Barb & Phil Cutler  
 Donald Dally  
 Ruth Darden  
 Joel Deaguero  
 Dottie Delaney  
 Michelle Lorenz  
 Deborah and Dennis DeYoung  
 Luella & Harold Drevecky  
 Allan Whitcomb & Lis Eddy  
 Gail & Shmuel El-Ad  
 Joanne R. Euster  
 John & Mariley Ferens  
 Gary H. Ferguson  
 Rick Freedman  
 Robert E. Frey  
 Laurie Galland  
 Sergey Genkin  
 Geneva Gerhart  
 Patricia Gervais  
 Mary M Gilbert  
 William Goldberg and Virginia Leen  
 Paul & Sheila Gutowski  
 Dr. Eugene & Rena Hamburger Ttee  
 Libby Hanna & Don Fleming  
 Erik & Evy Haroldson  
 Hashisaki/Tubridy Family  
 Daniel & Whitney Hazzard  
 Margot & Paul Hightower  
 Vaughn Himes & Martie Ann Bohn  
 Jim & Linda Hoff  
 Donna Holpainen  
 Sara Comings Hoppin  
 Robert Howie & Maria Milano  
 Susan & Philip Hubbard  
 Dr. Julie Hungar  
 Ms. Connie Hungate  
 Dean M. Ishiki  
 David B. Johnson  
 Robert Johnston

Bette Nicotri-Jones  
 Clare Kapitan & Keith Schreiber  
 Gail & David Karges  
 Debra Kelley  
 Jane Jollineau Kennedy  
 Amy Faherty & Jeff Kephart  
 Jerry Kimball & Marjorie Raleigh  
 Weldon Ihrig & Susan Knox  
 Karen Koon & Brad Edwards  
 Ginny Abramson  
 Greg Kucera & Larry Yocom  
 Max Langley  
 Rob Lehman & Christopher Mathews  
 Jim Lobsenz & Elizabeth Choy  
 Larry & Phyllis Loeb  
 Laura Lundgren  
 C. Gilbert Lynn  
 Alex & Lynn Macdonald  
 Susan & Mike MacFadden  
 Charles & Aileen Mangham  
 Andrew & Cynthia Marin  
 Bill & Holly Marklyn  
 Liz & Lyle Martin  
 Pam & Mo Mathews  
 May Louise McCarthy  
 Ann McCurdy & Frank Lawler  
 Tony Martello  
 Nicole McHale  
 Joy McNichols  
 Gail & John Mensher  
 Eugene & Donna Mikov  
 Michael & Sarajane Milder  
 Henry Miyoshi & Susan Woyna  
 Megan Moholt  
 Wesley Moore & Sandra Walker  
 Sallie and Lee Morris  
 Gloria & David Moses  
 Zack Mosner & Patty Friedman  
 James Mullin  
 John C. Narver  
 Cynthia & Bruce Parks  
 Laird Patterson, MD  
 David Pichette  
 Bill & Beth Pitt  
 Donald Pogoloff  
 Steve Poteet  
 Joan Potter  
 Mr. & Mrs. John Radovich  
 Ben and Margit Rankin  
 Craig & Melissa Reese  
 Lance & Cindy Richmond  
 Catherine & Thurston Roach  
 Carole E Rush  
 Ingrid Sarapuu & Michael Anderson  
 Pat and Bud Schafer  
 Marlyn Friedlander & Gilbert Scherer  
 Shelley Schermer  
 Joe & Judy Schocken  
 Mike Scully  
 Michael Scheinine  
 Thomas & Susan Shalles  
 Jeanne Sheldon and Marvin Parsons  
 Preston Briggs & Marya Silvernale  
 John & Rose Southall  
 Bettina Stix  
 Cynthia Gossett & Derek Storm  
 Isabel & Herb Stusser  
 Norm & Lynn Swick  
 Craig Tall

Ms. Lyn Tangen & Mr. Richard Barbieri  
 Joan E. Thacker  
 Gail Thompson  
 Timothy Tomlinson  
 Kim & Ann Torp-Pedersen  
 Sergei Tschernisch  
 Dirk & Mary Lou Van Woerden  
 Judy & Mike Waring  
 Judith Warshal & Wade Sowers  
 Carol Webb & Don Holz  
 Randall Weers  
 Philip & Susan White  
 Douglas & Dianne Wills  
 Susan Wolcott and George Taniwaki  
 R. Hamilton Wright  
 Melissa A. Yeager & Cory Van Arsdale  
 Joyce & Christian Zobel  
 Igor Zverev, Yana Solovyeva  
 Anonymous (11)

## \$250 – \$499

Diana & Warren Aakervik  
 Sue Albrecht  
 Sarah & Bob Alsdorf  
 Jerry Anches  
 Daniel & Kristie Anderson  
 Sharon Anderson  
 Tom Clement  
 Basil & Gretchen Anex  
 Loren & June Arnett  
 Robert M. Arnold  
 Shawn Bai & Michelle Dunlop  
 Jerry & Judy Baker  
 Marge and Dave Baylor  
 Tobi Beauchamp-Loya  
 Jim & Kathleen Bellomo  
 Mike & Marie Bender  
 Dr. & Mrs. Bensinger  
 Ruth and Greg Berkman  
 Linda Betts  
 John Bianchi & Scott Warrender  
 Gail & Randy Bohannon  
 John Boling  
 Wendy Bradbury  
 Brian Branagan and Carissa Sanchez  
 Karen Brattesani & Douglas Potter  
 June & Alan Brockmeier  
 Carlene Brown & Elvis Campbell  
 Dorothy A. Brown  
 Darryl Brown-Archie  
 Dr. James & Donna Brudvik  
 Clara Bryan  
 Gordon Buchan  
 Carol & Jonathan Buchter  
 Nancy Hansen & James Burnell  
 Peter Buser  
 Judith Callahan & John Van Bronkhorst  
 Tony & Margaret Catanzariti  
 Joni & Paul Cervenka  
 Mark Chandler  
 Clement Family Foundation  
 Greta Climer & Kevin Kennedy  
 Nicole Boyer Cochran  
 Judith & Thomas Connor  
 Mr Conway & Ms Williams  
 Kevin Cuba  
 Susanne & Steve T. Daley Charitable Fund  
 Dan & Esther Darrow  
 Paul & Sandy Dehmer

Ron & Jan Delismon  
 James and Amanda Devine  
 Paula Diehr & Frank Hughes  
 Daniel Dierks & Sally Avenson  
 Shelley Dion  
 Bob Donegan  
 Richard Dunn  
 Diane Easley  
 Mickey & Jeanne Eisenberg  
 Susan Elizabeth  
 A.J. Epstein  
 Michael Evans  
 Bill & Karen Feldt  
 Clayton & Katherine Fleming  
 Mac & Charlene Fletcher  
 Corinne Fligner & Mark Wener  
 Bruce Florsheim  
 Eleanor & Jeff Freeman  
 Dick & Sharon Friel  
 Marcia Fujimoto  
 Dorothy (Dot) V Fuller  
 Raymond & Jeanette Galante  
 Jane & Richard Gallagher  
 Jean Garber & Clyde Moore  
 Jean Gardner  
 Max Gellert  
 Martin Gibbins & Paula Crockett  
 Sue Gilbert  
 Sylvia Gillett  
 Carolyn Gleason  
 Sara & Jay Glerum  
 Virgina Gonzales  
 Claire & Paul Grace  
 Mott Greene  
 Ted & Sandra Greenlee  
 James & Rhonda Greer  
 Bernadine & Sean Griffin  
 Alexandre Grigorovitch & Vera Kirichuk  
 Carl & Barbara Grimes  
 Helen Gurvich  
 Lowell & Kathie Hagan  
 Harvey Hailer  
 Sharron & David Hartman  
 Diana & Peter Hartwell  
 Richard & Susan Hecht  
 Richard and Susan Hecht  
 Melissa Hines  
 Christine Hoffman  
 Jim & Sue Hogan  
 King Holmes  
 Dr. & Mrs. John Howe  
 Theresa Huard  
 Art & Merri Huffine  
 Julie & James Impett  
 Toshiye Ishisaka  
 Joel Ivey & Sheryl Murdock  
 Ann Janes-Waller  
 Susan & Fred Jarrett  
 Tom Jensen  
 Peter Joyce  
 Paul Kassen  
 Jeffrey Kay  
 Beverly & Otis Kelly  
 Thomas & Mary Kelly  
 Steven & Patricia Kessler  
 Peggy Kleyn  
 Agastya Kohli  
 Nancy Kuehnoel & Mark Proulx  
 Jim & Jean Kunz

# ACT Circle of Donors

Jill Kurfirst  
 Bob & Janet Lackman  
 Sharon Lamm  
 Paul & Linda Larson  
 Denise Bassett  
 Rhoda A.R. & Thomas V. Lawrence  
 David & Catharine Lawson  
 Craig Davis & Ellen Le Vita  
 J. Robert Leach & Vickie Norris  
 Shannyn & Chul Lee  
 Gary, Jane, Jessica & Ali Lindsey  
 Dan & Julia Little  
 Mark P. Lutz  
 Stephen & Ellen Lutz  
 PJ Hough & Mary Lydon  
 Kevin Lynch  
 Dan & Carol Madigan  
 Shaula & Darrin Massena  
 Bonnie Matson  
 Arthur Mazzola  
 Kevin & Sheri McCarthy  
 Catherine & Barry McConnell  
 Barbara & Roger McCracken  
 David & Karen McCullough  
 Shawna & Lachlan McLean  
 Robert & Susan Mecklenburg  
 Russell Metz  
 Col. Norman D. Miller  
 Heath Miller  
 Tom & Nancy Miller  
 Chuck Mitchell  
 Craig Montgomery & Steve Smith  
 Terry & Cornelia Moore  
 Roger Morris  
 Glenn & Samantha Morrissey  
 Annette & Gordon Mumford  
 Sarah Navarre  
 John Naye  
 Cindy & Ed Neff  
 Paul & Linda Niebanck  
 Dan Niles  
 Craig & Deanna Norsen  
 Lisa O'Brian  
 Kenneth Olsen  
 Jerry Olson  
 Kevin O'Morrison  
 Betty & Gordon Orians  
 Nancy Orsborn  
 Don & Helen Owens  
 John Palmateer  
 Sandra Pappas  
 Susan Perkins  
 Lola Peters  
 Kathleen Petrich  
 Greg & Sherre Piantanida  
 Judy G. Poll  
 Marlene Price  
 Deb Prince & Jerry Diercks  
 Bradley and Caroline Probst  
 Lucy & Herb Pruzan  
 Kathy Hagiwara Purcell  
 Michelle Quackenbush  
 Darryn Quincey & Kristi Falkner  
 Linda Quirk  
 Jeff & Pat Randall  
 Charles & Doris Ray  
 Jan & Kerry Richards  
 Laurie Richardson  
 Shawn Richardson

Clay & Patty Richmond  
 Peg Rieder  
 Marilyn Robbins  
 Bruce Robertson  
 Ernestine Rombouts  
 Patricia & David Ross  
 Ryan Rowell  
 M. Lynn Ryder Gross  
 Elizabeth Ryll & Richard Stead  
 Jerry Sale & Rachel Klevit  
 Marybeth & Jerry Satterlee  
 Paul & Terri Schaake  
 Melissa Schafer  
 Michael Scheinine  
 Gerry & Gail Schnider  
 Duane & Pat Schoeppach  
 Karen and Patrick Scott  
 Randolph & Lynn Beaty Sealey  
 David & Elizabeth Seidel  
 Charles & Andora Sharpe  
 Karen Shaw & Larry Holm  
 Sonia Siegel Vexler & Paul Vexler  
 Keith & Teresa Simanton  
 John Skinner & Peggy O'Neill Skinner  
 Jeff & Liz Slesinger  
 Alan & Susan Smith  
 Dave and Karen Smith  
 Warren & Nancy Smith  
 David Spellman  
 Thaddeus Spratlen & Lois Price  
 Gail & Robert Stagman  
 Alec & Jane Stevens  
 Kerrie Stewart  
 Margaret Stoner & Robert Jacobsen  
 Gary & Becky Streitmatter  
 Earl & Charlotte Sutherland  
 Constance Swank  
 Bill & Pat Taylor  
 Margaret Taylor  
 Lore & Henry Tenckhoff  
 Michael Thompson  
 Dennis M. Tiffany  
 Arthur & Louise Torgerson  
 Christopher & Mary Troth  
 Janet Upjohn  
 Dr. John & Callie Vassall  
 Padmaja Vrudhula  
 Beverly Wagner  
 Mary & Findlay Wallace  
 Carol & Jeff Waymack  
 Lucy & Larry Weinberg  
 Jim & Sharron Welch  
 Scott & Jan Weldin  
 Howard West and Wendy Hassan  
 Westbrook Family  
 Leora Wheeler  
 Robin Whipple  
 Don & Judy Wilson  
 Barry & Peggy Witham  
 William Womack MD  
 Erin Wong  
 Judy Woods  
 James & Patricia Zettas  
 Marie R. Zobrist  
 Anonymous (6)

## Gifts in Tribute

This list reflects gifts made to ACT between January 1, 2010 and March 31, 2011 in recognition of the following people:

In memory of Ellsworth "Buster" Alvord:  
 Suzanne & Brooks Ragen, Riddell Williams,  
 P.S.Katherine & Douglass Raff, Nadine &  
 John Murray  
 In memory of Stewart Ballinger: Virginia &  
 Thomas Riedinger  
 In honor of Joan & Larry Barokas: Norman &  
 Eleanor Sadis, Marcia Mayo  
 In memory of Thomas P. Bleakney: Brad &  
 Linda Fowler  
 In memory of Mary Vinton Fleming: Brooks &  
 Suzanne Regan  
 In honor of Richard Hesik and Barbara Johns:  
 Anonymous  
 In honor of Gloria Moses: Susan G. Kolb  
 In memory of Robert "Bob" Paul: Laura &  
 William Bailey  
 In honor of Gian-Carlo and Eulalie Scanduzzi:  
 Kenneth & Marleen Alhadeff  
 In memory of Mr. Walter "Walt" Walkinshaw:  
 Jean Walkinshaw; Anonymous; Horizon  
 House; Nadine & John Murray; The Lakeside  
 School; Ms. Lyn Tangen & Mr. Richard  
 Barbieri; Joan & Steve Waldo; Washington  
 State Hospital Association; Brooks &  
 Suzanne Ragen; Katherine & Douglass  
 Raff; Tina Bullitt; Ed & Betty Bottler; Riddell  
 Williams, P.S.; A.M. & S. Putter; Mrs. Susan  
 Claeys; Jeanie, Walter, and Richard Teare;  
 Meg & Michael Carrico; Victoria Bennett;  
 Ann P. Wyckoff  
 In memory of Dr. Robert "Bob" Wilkens:  
 Carolyn Keim, Nadine & John Murray  
 In memory of Scott Weldin: Jan Weldin

ACT would like to thank the following  
 Corporations for their contributions  
 through Gift Matching Programs. We  
 greatly appreciate the support of these  
 institutions and their employees.

Adobe Systems Inc, Matching Gift Program  
 Alaskan Copper & Brass Company  
 Amgen Foundation  
 Bank of America Foundation  
 Bentall Capital  
 Bill & Melinda Gates Foundation  
 The Boeing Company  
 Carillon Point Account  
 CBIC Insurance  
 Chevron  
 CIGNA Matching Gift Program  
 Citibank, N.A./Citicorp  
 Eli Lilly & Co. Foundation  
 Google  
 Harbor Properties, Inc  
 IBM International Foundation  
 Key Foundation  
 Merck  
 Microsoft Corporation Matching  
 The Prudential Foundation Matching Gifts

Puget Sound Energy  
 RealNetworks Foundation  
 SAFECO Matching Funds  
 Satori Software  
 Sun Microsystems Foundation  
 United Way of King County  
 The UPS Foundation  
 US Bancorp Foundation  
 Verizon Foundation  
 Washington Chain and Supply, Inc  
 Washington Mutual Foundation Matching  
 Gifts Program  
 Zymogenetics Inc.

ACT works to maintain our list of donors as  
 accurately as possible. We apologize for any  
 misspellings or omissions. Should you find  
 any, please contact our office so that we may  
 correct any mistakes in future publications.  
 Email or call Jennessa West at [jennessa.west@acttheatre.org](mailto:jennessa.west@acttheatre.org)  
 or (206) 292.7660 x1330.



# ACT *A Theatre of New Ideas*

## ACT Board Of Trustees

Philip M. Condit  
*Chairman*

Brian Turner  
*President*

Elaine Spencer  
*Vice President, Development Chair*

Chuck Sitkin  
*Vice President,  
Board Development Chair*

Daniel B. Hazzard  
*Vice President, Facilities Chair*

Paul Butzi  
*Treasurer*

Colin Chapman  
*Secretary*

Brad Fowler  
*Past President*

Sheena Aebig  
Dan Alexander  
Joan D. Barokas  
Lance Becker  
Laura P. Besteman  
Kyle Branam  
Ron J. Cathcart  
Charles Fitzgerald  
Richard Hesik  
Stephanie Hilbert  
John E. Jacobsen II  
William J. Justen  
Petra Franklin Lahaie  
Lauren Mikov

Kelly A. Miller  
Judy J. Ness  
Dr. George Ojemann  
Alan J. Rappoport  
Ingrid Sarapuu  
Mark Pellegrino  
Barry B. Scovel  
Sean Shanahan  
Rob G. Stewart  
Kristen J. Summersby  
Sita Vashee  
Chris K. Visser  
Clifford Webster  
Dr. Sheree Wen  
Scott F. Wilson  
Kyoko Matsumoto Wright

## ACT Advisory Council

Sheena R. Aebig  
Dr. Ellsworth C. Alvord, Jr.\*  
Aubrey Davis  
Daniel D. Ederer  
Jean Burch Falls  
Jeannie M. Falls  
John H. Faris  
Carolyn H. Grinstein  
Sara Comings Hoppin  
C. David Hughbanks  
Jonathan D. Klein  
Keith Larson\*  
Jane W. Lyons  
Louise J. McKinney  
Gloria A. Moses  
Nadine H. Murray  
Douglas E. Norberg  
Kristin G. Olson  
Donald B. Paterson  
Eric Pettigrew  
Pamela Powers

Katherine L. Raff  
Brooks G. Ragen  
Catherine Roach  
Jo Anne Rosen  
Sam Rubinstein\*  
David E. Skinner  
Walter Walkinshaw\*  
Dr. Robert Willkens\*  
David E. Wyman, Jr.  
Jane H. Yerkes

## Emeritus Council

Richard C. Clotfelter  
P. Cameron DeVore\*  
Esther Schoenfeld  
Marvel Stewart\*

## A Contemporary Theatre Foundation

Philip M. Condit  
*Chairman*

Kermit Anderson  
*President*

John C. Siegler  
*Vice President*

Katherine L. Raff  
*Secretary*

Catherine Roach  
*Treasurer*

Brad Fowler  
Lucinda P. Richmond  
Brian Turner

\*In memoriam

## ACT Staff

Kurt Beattie  
*Artistic Director*

Carlo Scanduzzi  
*Executive Director*

## Artistic

Margaret Layne  
*Casting Director &  
Artistic Associate*

Anita Montgomery  
*Literary Manager*

Nicole Boyer Cochran  
*Artistic Manager &  
Executive Assistant*

Valerie Curtis-Newton  
*Artistic Associate,  
The Hansberry Project*

Vivian Phillips  
*Producing Associate,  
The Hansberry Project*

Kristina Sutherland  
*Education Director*

Kenna Ketricks  
*Literary Intern*

Katie Beudert  
*Casting Assistant*

Stephanie Timm  
*Playwright in Residence*

## Administration

Adam Moomey  
*Operations Manager*

Alyssa Byer  
*Special Events Producer*

Brad Howe  
*Events Technician*  
Liam White  
*Volunteer Coordinator*

Teddy Heard  
*Facilities Maintenance*

Dave Parmley  
*Engineer*

Responza Management Services  
*IT Administrators*

## Finance

Mary D. Brown, CPA  
*Chief Financial Officer*

Michael Scheinine  
*Accountant*

Tobi Beauchamp-Loya  
*Payroll*

## Communications

Jacquelyn S. Rardin  
*Communications Director*

Sebastien Scanduzzi  
*Video Manager*

Ben Rapson  
*Interactive Media Specialist*

Drew Barth  
*Marketing Coordinator*

Maribeth Fletcher  
*Marketing Intern*

Apex Media  
*Advertising*

Rice Public Relations, LLC  
*Media Relations*

West Coast Group Sales  
*Group Sales*

Chris Bennion  
*Photographic Services*

Kevin Jones Copywriting  
*Copywriter*

Christa Fleming  
*Graphic Design*

Xtremities  
*Graphic Design*

Lynch Resources  
*Telemarketing*

## Development

Josef Krebs  
*Development Director*

Jennessa West  
*Associate Director of Development*

Ben Derby  
*Major Gifts Manager  
& Board Liaison*

John Osebold  
*Grant Writer*

Sarah Abel  
*Special Projects Coordinator*

Matthew Echert  
*Development Technology Specialist*

Meagan Halverson  
*Board & Development Intern*

## Audience Services

Harley D. Rees  
*Memberships & Audience  
Services Director*

Robert Hankins  
*Memberships & Audience  
Services Manager*

Ryan Rowell  
*Tessitura Manager*

Joe Mangialardi  
*Ticket Office Supervisor*

Jim Moran  
*House Manager*

Jeremy Rupprecht  
*Assistant House Manager*

Javonna Arriaga  
*Christine DiTolvo*

Katie Beudert  
Paul Dumas

Alisha Geck  
Erin Hancock

Scott Herman  
Mike Jones

Tony Koons  
Adrienne Littleton

Niki Magill  
Juliette Oliver

Sarah Richardson  
Darryl Singleton

Brittany Swarthout  
Kyle Thompson

Audience Services  
Christine Jew

Volunteer Usher Coordinator

## Production

Joan Toggenburger  
*Producing Director*

Emily Cedergreen  
*Production Office Manager*

Skylar Hansen  
*Production Runner*

## Stage Management

Jeffrey K. Hanson  
*Production Stage Manager*

JR Welden  
*Stage Manager*

Mike Bowers  
*Production Assistant*

## Costume Departments

Carolyn Keim  
*Costume Director*

Connie Rinchuso  
*Costume Shop Foreman*

Kim Dancy  
*First Hand & Lead Dresser*

Sally Mellis  
*Wardrobe Master*

Joyce Degenfelder  
*Wig Master*

## Scenic Departments

Steve Coulter  
*Technical Director*

Derek Baylor  
*Assistant Technical Director*

Austin Smart  
*Master Scenic Carpenter*

Jeff Manzolli  
Amanda Quinn  
Sean Wilkins  
*Scenic Carpenters*

Mona Lang  
*Scenic Charge Artist*

Lisa Bellerio  
*Assistant Charge Artist*

Marne Cohen Vance  
*Properties Master*

Ken Ewert  
*Master Properties Artisan*

Thomas Verdos  
*Lead Properties Artisan*

## Stage Operations

Nick Farwell  
*Stage Operations Supervisor*

James Nichols  
*Master Stage Carpenter*

Pam Mulkern  
*Master Electrician*

Max Langley  
*Master Sound Engineer*

Brendan Patrick Hogan  
*Staff Sound Design*

## For This Production

Marta Olson  
*Lead Dresser*

Marta Olson  
*Stitcher*

John Small  
*Stagehand*

Katherine Parker  
*Scenic Intern*