

# encore

OCTOBER 2011

a r t s p r o g r a m s

FEB 4 - MAY 1

*Vanities: A New Musical*

APR 29 - MAY 29

*The Prisoner of Second Avenue*

JUN 17 - JUL 17

*Pilgrims Musa and Sheri in the New World*

JUL 29 - AUG 28

*In the Next Room, or the vibrator play*

SEP 9 - OCT 9

*Mary Stuart*

OCT 21 - NOV 20

*Double Indemnity*



A Contemporary Theatre

A THEATRE OF  
NEW IDEAS

## Double Indemnity

Adapted by David Pichette and R. Hamilton Wright

Based on the book by James M. Cain

Directed by Kurt Beattie

Co-Produced with San Jose Repertory Theatre



Kurt Beattie  
*Artistic Director*

Gian-Carlo Scandiuzzi  
*Executive Director*

ACT  
*A Contemporary Theatre presents*

# Double Indemnity

Adapted by David Pichette and R. Hamilton Wright

Based on the book by James M. Cain

Directed by Kurt Beattie

*Beginning October 21, 2011*

*Opening Night October 27, 2011*

Co-Produced with San Jose Repertory Theatre  
Rick Lombardo, Artistic Director; Nick Nichols, Managing Director

PRODUCTION SPONSORS:



NESHOLM FAMILY  
FOUNDATION



SEASONAL SUPPORT PROVIDED BY:



A Contemporary  
Theatre Foundation

Eulalie Bloedel Schneider  
Artists Fund



The Andrew W. Mellon Foundation

THE JOHN GRAHAM FOUNDATION

Originally produced by ACT – A Contemporary Theatre, Seattle, WA  
Kurt Beattie, Artistic Director  
Gian-Carlo Scandiuzzi, Executive Director



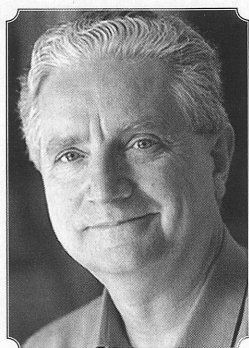
## Welcome to ACT

*"Like many first person narratives, the world is seen through an entirely subjective lens, and the primacy of the individual's emotion and sexual need imbues everything with a cold force."*

James M. Cain was one of a number of writers during the '30s who created and explored a new genre of crime fiction. Until then, the more or less virtuous detective was the focus of most stories, and his or her powers of ratiocination the main pleasure. This type of hero had a popularity that endures even today, spread widely in interesting contemporary guises throughout the media, such as Hugh Laurie's *House*, the strung-out medical Sherlock Holmes. Some of Cain's protagonists, however, like those of Cornell Woolrich, Kenneth Fearing and William Lindsay Gresham, were the criminals themselves. The best novels generated from this premise had a different feel to them, a psychological density and disturbing bleakness that made it impossible for many to talk about them as other than works of Art. W. H. Auden postulated that the difference lay in the fact that these books, concentrating on the criminal as protagonist, forced an uncomfortable identification of the reader with the murderer. They created a sense of spiritual risk in the reader, like Kafka or Dostoyevsky, and were not escape literature in the normal sense, or entertaining like an Agatha Christie yarn, which never has to be read again once you know who did it.

James M. Cain's novella *Double Indemnity* incited a bidding war among the movie studios when it appeared in 1935 as a magazine serial, but the Hayes Office, the censor through which all scripts had to pass in order to be made, found it so appalling that it wouldn't okay it for production. The Hayes objection is worth remembering: it found the characters in the novella loathsome and "sordid." The book seemed to step over a line by having no heroes, or anything like a good character. (Even Raymond Chandler, who later adapted the book for film, thought it low.)

There is no obvious evidence of the Depression in *Double Indemnity*, no Okies or desperately poor people or bankers selling apples. But something is clear. California in 1935 as imagined by Cain is a featureless place without a whisper



of moral inhibition. That simply doesn't exist. The place's greedy materialism is instinctive and natural. There are rules that most seem to obey, like showing up on time for work or stopping for a red light, but ultimately what you want in the immediate moment is all that matters, and if you can get it, you should. Huff is a salesman who has never, as far as we know, done anything wrong before he encounters his Los Feliz death muse, but Cain makes you feel like the potential for something bad was always there in Huff's ordinary charm, hiding like a tarantula in his unconscious smile as he tries to make a

sale. Like many first person narratives, the world is seen through an entirely subjective lens, and the primacy of the individual's emotion and sexual need imbues everything with a cold force. Hatred, anger, and indifference to suffering hang around unprepossessingly in reflective department store windows and oil fields and insurance offices. Their tantalizing surfaces and promises cover a hard substrate, a narcissistic world without cultural memory, generosity, or the faintest twitch of altruism.

The writers of the wonderful movie, Raymond Chandler and Billy Wilder, brilliantly adapted the book for 1944 audiences. Much of the great repartee between Fred MacMurray and Barbara Stanwyck is their invention, and the source of so much that is compelling in the film. But they ignored a number of the book's most original and very strange gestures, I think simply because there was no way audiences could understand them then. Our fine adaptors, David Pichette and R. Hamilton Wright, have brought the novella full circle back to itself, with all its unique and unsettling music. And for that, I am most grateful.

A handwritten signature in dark ink, reading "Kurt Beattie".

Kurt Beattie, ACT Artistic Director

## Table of Contents

A - 1	Title Page	A - 5	Program Notes	A - 11	Special Fund Donors
A - 2	Welcome to ACT	A - 7	Who's Who	A - 12	Community Partners
A - 3	The Company	A - 9	ACT's 2012 Season	A - 13	ACT Circle of Donors
A - 4	Up Next	A - 10	Giving Message	A - 16	Board of Trustees, ACT Staff



# The Company

## Cast

*(in alphabetical order)*

John Bogar	Walter Huff
Jessica Martin	Lola Nirlinger/Nettie/Nurse
Carrie Paff	Phyllis Nirlinger
Mark Anderson Phillips	Nino/Jackson/Norton
Richard Ziman	Keyes/Nirlinger

## Creative Team

Kurt Beattie	Director
Thomas Lynch	Scenic Designer
Annie Smart	Costume Designer
Rick Paulsen	Lighting Designer
Brendan Patrick Hogan	Sound Designer
Adam Stern	Composer
Jeffrey K. Hanson	Stage Manager
Whitney Breite	Assistant Stage Manager
Robert Macdougall	Fight Director

## Setting:

The dusty, amoral Los Angeles of the 1930s.

## Running Time:

This show runs approximately two hours. There will be one intermission.

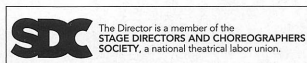
The Actors and Stage Managers in this production are members of Actors' Equity Association, the Union of Professional Actors and Stage Managers in the United States.

Audience members are cordially reminded to silence all electronic devices such as cell phones, watch alarms, and pagers prior to the performance.

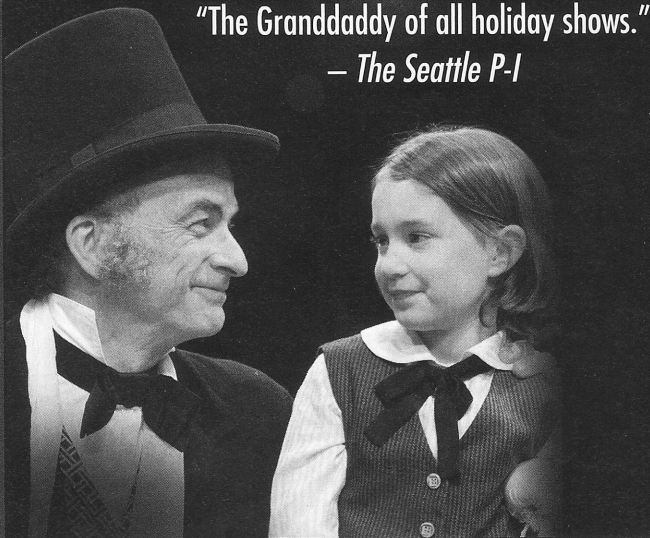
All forms of photography and the use of recording devices are strictly prohibited.

Please do not walk on the stage before, during or after the show.

ACT operates under agreements with the following:





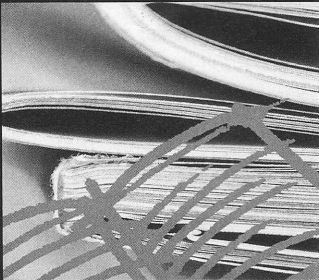


"The Granddaddy of all holiday shows."  
— *The Seattle P-I*

Nov 25 — Dec 24

# Christmas Carol\*

by Charles Dickens  
Adapted by Gregory A. Falls



Short  
Stories  
Live



CENTRAL HEATING  
LAB EVENT

Oct 30, Dec 18

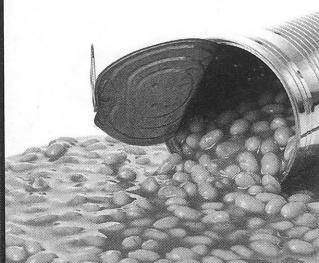


Pinter  
Fortnightly



CENTRAL HEATING  
LAB EVENT

Oct 24, Nov 11 — 12



*Seattle Confidential*  
Created by  
Ian Bell



CENTRAL HEATING  
LAB EVENT

Nov 14



Wisemen  
Rosenstock

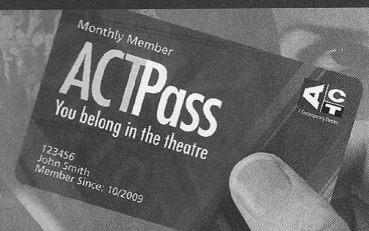


CENTRAL HEATING  
LAB EVENT

Dec 13 — 22

Buy tickets online, and see what else we have coming up!

Or, see it all with an ACTPass!  
Only \$25 a month. [acttheatre.org](http://acttheatre.org)



\* Tickets to *A Christmas Carol* are not included with the ACTPass. Discounted tickets ARE available for purchase.



# AN INTERVIEW

WITH THE ADAPTERS & DIRECTOR OF ACT'S DOUBLE INDEMNITY

FROM VINCE KEENAN'S INTERVIEW IN *NOIR CITY* MAGAZINE  
WITH DAVID PICHETTE, R. HAMILTON WRIGHT, AND KURT BEATTIE

**NOIR CITY:** *How did the idea of the adaptation originate?*

**DAVID PICHETTE:** We'd been thinking for years about doing some kind of adaptation because all three of us are big fans of that branch of American lit, the crime novel. One of the first things we looked at was *Nightmare Alley*, which I still think is the greatest of all those crime novels. It's better every time I read it. And a really good film adaptation, too, if you ignore the tacked-on ending. I always stop it just before his redemption. It happens so often, like with *Ride the Pink Horse*, a really good adaptation of a really good Dorothy B. Hughes novel. And then they f\*\*\* it up at the end, because they have to. It's so rare that they stick to their guns. But then *Double Indemnity* had been such a huge hit, you'd think that would set the precedent. You can do this and have a successful film.

**R. HAMILTON WRIGHT:** Like a lot of people I started reading Hammett and Chandler



when I was in my teens. I think the reason I liked them so much, and Hammett especially when I first got into him, was the sense of him being a Western writer. Being a West Coast kid, I grew up in Seattle. I came to Cain later on, probably in my 20s and 30s.

**PICHETTE:** I didn't get to Cain until maybe 20 years ago. What I love about Cain is that he's the first guy to write a popular thriller that's like a Black Mask world but doesn't involve a detective. Elmore Leonard talked about *Double Indemnity* and *The Postman Always Rings Twice* as the greatest one-two punch in

American lit, because they came out so close together. Actually, they're the same story.

**WRIGHT:** They really are.

**PICHETTE:** And both enormous successes. But it's like Georges Simenon getting pissed off when the Nobel Prize for Literature went to Albert Camus [in 1957]. Simenon, who by that point had written at least 100 novels, was covering exactly the same world that Camus did with *The Stranger* but he was doing it like James M. Cain. He was writing popular novels, making mainstream huge philosophical angst and dismay at the meaninglessness of existence but telling it as a popular story and being a huge success. They were doing the same thing in the same era, in the 1930s, Simenon in France and Cain here.

**WRIGHT:** Sometimes you feel when you read Cain's novel it's like Dostoyevsky has decided to write a leaner, meaner, little book in English. They are thrillers, but you can quite appropriately call them American





"AS A REMEDY TO LIFE IN SOCIETY I WOULD SUGGEST THE BIG CITY. NOWADAYS, IT IS THE ONLY DESERT WITHIN OUR MEANS." — CAMUS

novels. The fact that they have to do with murder doesn't significantly alter them from, say, Theodore Dreiser or any number of great novels. With death and culpability and sin as major precipitating events.

**KURT BEATTIE:** Cain documents the fear and terror at the heart of modern life in his own odd way, and it's why his work has hung around. You could get a hundred pulp novels and you wouldn't find anything that's as compelling as Cain's novels. And they're compelling not just because they're good entertainments but because they are actually saying something about what it is to live in the modern world. That's why I think it's an inspired choice of Bob and David's to take on this material. If we're able to do it right, it will be both an entertaining and, dare I say it, philosophical journey for the audience. Noir, for me, is a fantastic journey into a morally featureless universe. I see noir as fundamentally melodrama with one great difference. In the moral definition of the world, good people and bad people, moral absolutes are hugely blurred in noir. But you have all the devices of melodrama. Mood heightened by music, cliffhanger situations, suspense. And noir generates a tremendous amount of fear, pleasurable fear, about being waylaid in the dark, about being destroyed by people who supposedly care about you. And yet these stories are often discussions of moral values. Noir is a brilliant way of bringing forward and amplifying those emotional forces, those anxieties that people struggle with daily.

**NOIR CITY:** *How do you hope to make Cain's story relevant to contemporary audiences?*

**PICHETTE:** This is one of those questions that's always asked, and without being a smartass, I don't think it's important. I think you do something because you feel compelled to do it. I think both Bob and I would have been willing at any point in the last 20 years to tell this story, because we love it. It is a little bit lucky, right now, because we are in fact facing a national crisis where again, we've watched malfeasance on a level that had been unthinkable. You start getting into a Huff-like mentality where you think, "If those are the new rules, why I shouldn't I take advantage in a similar fashion? My goals are smaller. The only difference between me and J. P. Morgan is I'm going to kill one person and get a little bit of money instead of destroying a nation and making a fortune."

**WRIGHT:** We always ask the question, when you see a production of *Macbeth*, beyond the fact that there's all the baggage of it's Shakespeare and why do it, why do you want to watch? You want to watch because it's people caught in the grip of fate and their own pathetic flailings to get away from it. And we can see that they're doomed. Cain has the added advantage that I think too many Shakespeare productions don't have, which is an actual sense of humor about it. I don't mean funny, necessarily, but that human vulnerability that makes people gasp.

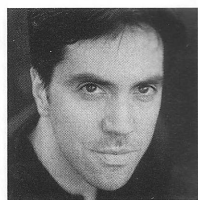
So often in Shakespeare we create creatures that aren't quite that because of the language and everything else. It doesn't seem to echo ourselves enough.

**PICHETTE:** And tragedy is always going to be compelling, whether times are good or bad; that you are in fact simultaneously a victim of fate and the architect of your own doom. A sense that things are never going to turn out the way you want them to.

**BEATTIE:** I look upon it as a sociopolitical description of where we are right now. This is one of the uber-reasons why we programmed this. One, we programmed it because it's fun. Everybody likes a thriller. Crime stories are endlessly popular to us all, and if done well, audiences will enjoy it and will want to buy tickets to see it. But there is another reason for doing it, and it has to do with creating consciousness. It's an examination of human behavior; the morality of the marketplace, the philosophy of self-interest. And I hope that audiences watching this story will be stimulated to think about it intellectually. Certainly film noir created that. The genre, as it was defined by film historians and intellectuals had that effect on audiences. They said, "This articulates something really important and serious about who we are and how we live. It describes a malady." The idea is how do we correct the malady, can we correct it. In the end, that's one of the reasons why I'm doing it.



# Who's Who in *Double Indemnity*



## John Bogar

(Walter Huff) has the great pleasure to work with ACT for the first time. Seattle audiences have seen him in a number of roles with the Seattle Shakespeare

Company including: Macheath in *The Threepenny Opera*, Malvolio in *Twelfth Night* and 'The Man' in *The Turn of the Screw*. Some favorite productions around town are: *Macbeth* with Wooden O (title role), *Persuasion* and *Night Flight* with Book-It Repertory Theatre and *42nd Street* with Village Theatre. He trained at Circle in the Square and Columbia University from which he holds an MFA. Look for *The Seagull* in the fall of 2012 here with the support of ACT's Central Heating Lab and for which he is a co-producer with his real-life partner in crime, Julie Briskman. [www.theseagullproject.org](http://www.theseagullproject.org)



## Jessica Martin

(Lola Nirlinger/Nettie Nurse) Martin has appeared at ACT in *Rock 'n' Roll*, *The Trip to Bountiful*, and in two seasons of *A Christmas Carol* as the Ghost of

Christmas Past. Most recently she appeared as Marianne Dashwood in Book-It Repertory Theatre's production of *Sense and Sensibility*. Elsewhere: *Hamlet* at the Indiana Repertory Theatre, the world premiere production of Jane Martin's *Somebody/Nobody* at the Arizona Theatre Company, *12 Minutes Max* at On the Boards, and in readings for the Icicle Creek Theatre Festival, TheFilmSchool, and Short Stories Live at Town Hall. Martin is the voice of Samus Aran in Nintendo's *Metroid: Other M*. She is a graduate of the University of Washington with degrees in Drama and Psychology. [www.jessicaerinmartin.com](http://www.jessicaerinmartin.com)

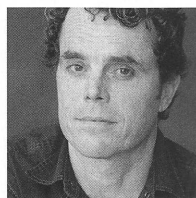


## Carrie Paff

(Phyllis Nirlinger) is thrilled to make her ACT debut. Regional credits include *Tiny Alice* and *A Streetcar Named Desire* at Marin Theatre Company; *After the*

*War* at A.C.T. in San Francisco; *Dr. Jekyll & Mr. Hyde* at Arizona Theatre Company; *A Delicate Balance*, *Collapse*, *Small Tragedy* and *Betrayal* at Aurora Theatre Company, *Legacy of Light* and *A Picasso* at San Jose Repertory Theatre; and *Joan Rivers - A Work in Progress* by a Life in Progress at the Edinburgh Fringe Festival & London's Leicester Square Theatre. Film work includes *Love & Taxes*, *Presque Isle*, *Opal*, *This is Macbeth*

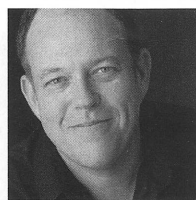
and *This is Hamlet*. She holds a master's degree in educational theater from New York University and is the cofounder of StageWrite, Building Literacy through Theatre. [www.carriepaff.com](http://www.carriepaff.com)



## Mark Anderson

Phillips (Nino/Jackson/Norton) is pleased to be making his ACT debut with *Double Indemnity*. Based in the SF Bay Area, his work includes roles with American

Conservatory Theater, The Magic Theatre, Berkeley Repertory Theatre, TheatreWorks, San Jose Repertory Theatre, The Aurora Theatre, The SF Playhouse, Marin Theatre Company, Arizona Theatre Company, California Shakespeare Theatre. Phillips has appeared at the Edinburgh Fringe Festival (*Joan Rivers - A Work in Progress* by a Life in Progress) and the New York International Fringe Festival (*Abraham Lincoln's Big, Gay Dance Party*), which won Best of Fringe. He is the recipient of three Bay Area Drama Critics' Circle Awards for best performance in a leading role. Also, he can be seen in the educational film *This is Macbeth* (Macbeth). [www.markandersonphillips.com](http://www.markandersonphillips.com)



## Richard Ziman

(Keyes/Nirlinger) Previously at ACT: *Das Barbecü*, *Stuff Happens*, *The Underpants*, *Mitzi's Abortion*, *Born Yesterday*, *Polish Joke*, *Grand Magic*, and *A Christmas Carol*.

Ziman most recently appeared as Falstaff in *Henry IV, Part 1* and Cardinal Richelieu in *The Three Musketeers* for Shakespeare Santa Cruz, and earlier this year as Claudius in *Hamlet* for Seattle Shakespeare Company. Other local work includes *Rounding Third* at Intiman Theatre, *Henry IV, Parts 1 and 2* and *Richard III* at Seattle Shakespeare Company, and *The Gypsy King* and *The Importance of Being Earnest* for Village Theatre. Broadway: *Not About Nightingales* (premiered at the Royal National Theatre of Great Britain), *Epic Proportions*, *Laughter on the 23rd Floor*, *Lost in Yonkers*, and *Henry IV*. New York Shakespeare Festival: *Twelfth Night*, *Two Gentlemen of Verona*, *Julius Caesar*, *Kit Marlowe*, and *The Normal Heart*. Film and TV include: *Leverage*, *The Sopranos*, *Law & Order*, *Third Watch*, *100 Center Street*, *Private Parts*, *Clockers*, *Hackers*. A graduate of The Juilliard School, Ziman is also a core member of Endangered Species Project and The Sandbox Artists Collective. [www.richardziman.com](http://www.richardziman.com).

**Jeffrey K. Hanson** (Stage Manager) Now in his 22nd season at ACT, Hanson has stage managed more than 60 shows including *In*

*the Next Room*, or *the vibrator play*, *Becky's New Car*, *The Lieutenant of Inishmore*, *Das Barbecü*, *The Women*, *Stuff Happens*, *The Pillowman*, *Mourning Becomes Electra*, *A Skull in Connemara*, *Quills*, *Laughter on the 23rd Floor*, *The Gospel at Colonius*, *Halcyon Days*, *The Revengers' Comedies* and *Lloyd's Prayer*. At The 5th Avenue Theatre, he has been production stage manager for *Candide*, *Irving Berlin's White Christmas*, *Hello Dolly!* and *Mame*. He has stage managed at Seattle Repertory Theatre (*Metamorphoses*, *The Cider House Rules*, *Parts One and Two*), Seattle Children's Theatre, Intiman Theatre, and Arizona Theatre Company.

## Whitney Breite (Assistant Stage Manager)

*Double Indemnity* is Breite's first main stage production at ACT. Previous credits include *Death of a Salesman* (The Old Globe), *A Doctor in Spite of Himself*, *Ruined*, *Othello*, *A Streetcar Named Desire* (Intiman Theatre), *Three Musketeers*, *The Cure at Troy*, *The Breach*, *Murderers* (Seattle Repertory Theatre), *The Bremontown Musicians*, *Goodnight Moon*, *If You Give a Mouse a Cookie* (Seattle Children's Theatre), *Il Trovatore* (Seattle Opera). Before moving to Seattle, Breite grew up in San Diego and received a BA from California State University, Chico. She is a proud member of Actors Equity Association and is delighted to be working with ACT on this project.

## David Pichette (Playwright/Adapter)

In a 29-year association with ACT, some of his favorite roles have been George (*Jumpers*), Golutvin (*The Diary of a Scoundrel*), Mellersh (*Enchanted April*) and an entire village of very nervous people (*The Woman in Black*). He appears regularly at most theatres in the area, and did so with the late, great Empty Space Theatre. The first conversation that Pichette had with Bob Wright, 30 years ago, was centered on their mutual passion for noir crime fiction. Some projects just take longer than others.

## R. Hamilton Wright (Playwright/Adapter)

was last seen at ACT as Robert Dudley, the Earl of Leicester in *Mary Stuart* and before that as Mel Edison in *The Prisoner of Second Avenue*. He is co-adapter—along with his old friend David Pichette—of ACT's world premiere of James M. Cain's *Double Indemnity*. He lives in a small house north of Ballard with his amazingly talented wife Katie Forgette.

**James M. Cain** (Author) one of the creators of the roman noir genre began his career as a police reporter for *The Baltimore Sun* and was a protégé of the famous critic H. L. Mencken. As a journalist born and raised on the East Coast, he contributed to *The Atlantic*, *The Nation*, *The New York World*, *American Mercury*, and



## Who's Who in *Double Indemnity*

became the managing editor of *The New Yorker* magazine before moving to Hollywood in 1930. Though he tried his hand at both play and screenwriting, Cain found his true voice and fame as a crime novelist and short story writer. Best known for his novel *The Postman Always Rings Twice*, Cain is also the author of *Serenade*, *Mildred Pierce*, *Sinful Woman*, *The Moth*, *Rainbow's End* and *Past All Dishonor* among others. *Double Indemnity*, his second novel, was first published in serial form in *Liberty Magazine* in 1943. Cain died at the age of 85 in 1977.

**Thomas Lynch** (*Set Designer*). Broadway: *A Raisin in the Sun*, *Contact*, *The Music Man* (Tony Award nomination), *Having Our Say*, *Swing!* *The Heidi Chronicles* (Tony Award nomination), *Ah, Wilderness!* and *Tintypes*. Off-Broadway: Wendy Wasserstein's *Third*, *See What I Wanna See*, *A Woman Before a Glass* (OBIE Award), *Valhalla*, Richard Nelson's *Madame Melville*, Chris Durang's *Laughing Wild* and *Betty's Summer Vacation* (OBIE Award), and Alfred Uhry's *Driving Miss Daisy*. Designs for all major regional theatres and with directors including Daniel Sullivan, Robert Falls, Kyle Donnelly, Richard Nelson, Stephen Wadsworth, and Emily Mann. Opera: includes *Rodelinda* and the upcoming *Iphigenie en Tauride* (Metropolitan Opera), *The Ring Cycle* (Seattle Opera), *Alcina* (Covent Garden), *A Quiet Place* (Vienna Staatsoper).

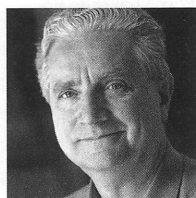
**Annie Smart** (*Costume Designer*) is originally from London where she designed for the Royal Court Theatre, Joint Stock Theatre Group and the National Theatre amongst others. Now resident in the Bay Area, recent work there includes: *The Threepenny Opera*, *A Doll's House*, *Night and Day* at A.C.T. San Francisco; *The Tempest*, *Man and Superman*, *An Ideal Husband*, *Private Lives*, *The Pastures of Heaven*, *Candida* at California Shakespeare Theater; *Brooklyn Boy*, *Theophilus North*, *Auctioning the Ainsleys*, [title of show] for TheatreWorks; *Long Day's Journey Into Night*, *The Weir* for San Jose Repertory Theatre; and for Berkeley Repertory Theatre: *Big Love*, *Suddenly Last Summer*, *To The Lighthouse*, *Heartbreak House*, *Fêtes de la Nuit*, *Taking Over* (also The Public Theater, NY), *Yellowjackets*, *Passing Strange*, *Tiny Kushner* (also at The Tricycle Theatre, London), *Concerning Strange Devices from the Distant West*, *In The Next Room, or the vibrator play* (also the Lyceum Theatre, NY), *Three Sisters* and more. She currently teaches costume and set design at UC Berkeley.

**Rick Paulsen** (*Lighting Designer*) is delighted to be returning to ACT, where his lighting was first seen in 1984. Since then, Paulsen has lit over 50 shows at ACT including *First Class*,

*Vincent in Brixton*, *Fiction*, *The Trip to Bountiful*, *Lonely Planet*, *Becky's New Car*, *Jekyll and Hyde*, last season's *Yankee Tavern* as well as *The Prisoner of 2nd Avenue*. Paulsen's work has appeared all around Seattle and across the nation. Some recent works of note include *The Borrowers* and *The Bremontown Musicians* at Seattle Children's Theatre, *Lilly's Purple Plastic Purse* and *A Year with Frog and Toad* at Childsplay. He is, most importantly, devoted to his wife Roberta and daughter Paige.

**Brendan Patrick Hogan** (*Sound Designer*) *Double Indemnity* is Hogan's 16th design for ACT Theatre. Favorite designs for ACT include *Mary Stuart*, *Yankee Tavern*, *Pilgrims*, *Musa and Sheri in the New World*, *Rock 'n' Roll*, *Dr. Jekyll & Mr. Hyde*, *The Lieutenant of Inishmore*, *In the Next Room, or the vibrator play* and *Below the Belt*. Other local designs and compositions for stage include: *RoboPop!*, *Titus*, *God's Ear*, *Neighborhood 3: Requisition of Doom*, *Mr. Marmalade* (Washington Ensemble Theatre); *Demonology* (Next Stage); *Chamber Cymbeline* (Seattle Shakespeare Company); *The River Why* (Book-It Repertory Theatre). When not editing audio files in a dark room, Hogan performs with local bands *Miss Mamie Lavona the Exotic Mulatta* and *Her White Boy Band* and *The Bad Things*. He is married to actress Samara Lerman.

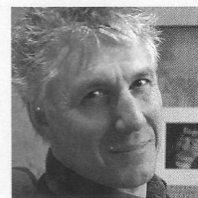
**Adam Stern** (*Composer*) is currently the Music Director and Conductor of the Seattle Philharmonic and the Port Angeles Symphony. When not conducting, he is active as a pianist, composer, lecturer, writer and teacher; he is currently on the faculty at Cornish College of the Arts where he teaches conducting and composition. He has written the incidental music for a handful of ACT productions over the years, including *The Pillowman*, *Alki*, *The Red and the Black*, and *A Christmas Carol*, the score of which has been heard at ACT every December since 1996. Adam is thrilled to be working with colleagues Kurt Beattie, R. Hamilton Wright and David Pichette again on *Double Indemnity*.



**Kurt Beattie** (*Director*) Beattie's past productions at ACT include *The Lieutenant of Inishmore*, *Rock 'n' Roll*, *Becky's New Car*, *Intimate Exchanges*, *First Class*, *The Pillowman*,

*Mitzi's Abortion*, *The Underpants*, *Vincent in Brixton*, *Bach at Leipzig*, *Black Coffee*, *Alki*, *Fuddy Meers*, *Fully Committed*, *Via Dolorosa* and *A Christmas Carol*. Elsewhere he has directed *Things Being What They Are* and *Art at*

Seattle Repertory Theatre, as well as productions at The Empty Space Theatre, Intiman Theatre, the Hugo House, and the University of Washington. As an actor, he has appeared in leading and major roles at ACT, Seattle Repertory Theatre, Intiman Theatre and The Empty Space Theatre. Beattie was the co-recipient of the 2004 Theatre Puget Sound Gregory A. Falls Sustained Achievement Award. This season he also directed *In the Next Room, or the vibrator play*.



**Gian-Carlo Scandiuizzi** (*Executive Director*) is a founder of Agate Films and Clear Pictures, producing such films as *Prototype*, *Dark Drive*, *Outpatient* and *The*

*Flats*, and Indieflix, a distribution company. In 1979, Scandiuizzi started Modern Productions, bringing to Seattle such legendary bands as The Police, Devo, Nina Hagen, Iggy Pop, The Ramones, John Cale, Robert Fripp, James Brown, Muddy Waters and many more. He performed in several plays at The Empty Space Theatre including *Aunt Dan and Lemon*, *The Return of Pinocchio* and *Dracula*. In the early '80s, he collaborated with many Seattle performance artists such as Norman Durkey, Alan Lande and Jesse Bernstein. He also acted in various films including *Bugsy*, *The Public Eye*, *Another You*, *Casanova's Kiss* and *Killing Zoe*. He graduated from the Ecole Supérieure D'Art Dramatique of Geneva.

**San Jose Repertory Theatre** (*Co-Producer*) founded in 1980, is an award-winning regional theatre with a mission to engage, entertain, and inspire. They produce innovative theatrical performances that offer fresh perspectives into the human condition, educational programs that promote life-long learning, and outreach initiatives that benefit Silicon Valley's diverse community. San Jose Rep presents seven main-stage productions and offers extensive education/outreach programming that serves over 100,000 community members annually. Over the last five years, San Jose Rep has received prestigious national awards for new works and outstanding artistic merit from organizations such as The Shubert Foundation, The Rockefeller Foundation, The James Irvine Foundation, Dean Goodman Awards, Bay Area Theatre Critics Circle Awards, DramaLogue Critics Awards, and AT&T OnStage.



# ACT Theatre 2012 Season

Mar 10–May 20 • *World Premiere!*

## First Date: A New Musical

Book by Austin Winsberg  
Music and lyrics by Alan Zachary  
and Michael Weiner

One first date. Two people. And every  
single voice in their heads.

A co-production by The 5th Avenue  
Theatre and ACT.

Apr 20–May 20

## The Pitmen Painters

By Lee Hall  
Inspired by a book by William Feaver

A transforming true story about  
paintbrush wielding miners from the  
acclaimed writer of Billy Elliott.

Jun 8–Jul 8

## One Slight Hitch

by Lewis Black

Dearly beloved, fasten your seatbelts!  
A smart modern farce from a Daily Show  
regular.

Jul 20–Aug 26

## The Pinter Festival

Four Plays by Harold Pinter

*Celebration, The Dumb Waiter,  
No Man's Land, Old Times.*

Performances, readings, films, classes  
and more — celebrating one of our  
greatest contemporary playwrights.

Sep 7–Oct 7 • *World Premiere!*

## Trieu Tran: Uncle Ho to Uncle Sam

By Trieu Tran

A riveting immigrant drama of  
becoming American while being haunted  
by the ghosts of Vietnam.

Oct 12–Nov 11 • *World Premiere!*

## Ramayana

Adapted & Created by ACT's Affiliate  
Artist Working Group

India's most beloved and enduring  
legend, brought spectacularly to life.

### Season ticket holders enjoy:

The best seats for each show • Up to 20% savings off of regular  
prices Exclusive invitations and access to ACT's special events

### See all six and save!

[acttheatre.org/subscribe](http://acttheatre.org/subscribe) (206) 292-7676.

\*\*Titles, dates & venues subject to change



## Host Your Next Event at ACT

For 10 people or 400, ACT is...  
Affordable, accessible, and downtown!  
Perfect for weddings, receptions,  
holiday parties, fundraisers and more.

### Contact us today for a full building tour.

[events@acttheatre.org](mailto:events@acttheatre.org)  
206-292-7600 ext. 1310







ARTSFUND

# Thank you to the following donors for their support of ArtsFund's 2011 Campaign and Programs.

Campaign 2011 includes gifts received between 7/1/10 and 6/30/11.

## Arts Benefactor Circle

### Gold Club

**\$50,000 and up**  
Pete and Julie Rose  
Anonymous

### \$25,000 - \$49,999

Kathryn Alvord Gerlich  
Joshua Green Foundation, Inc.  
Mary Pigott  
Stephen P. and Paula R. Reynolds

### Conductor's Circle

#### \$10,000 - \$24,999

Nancy Alvord  
Judi Beck and Tom A. Alberg  
Jim and Gayle Duncan  
Patricia Britton and Stellan Keehn  
Deborah Killinger  
Kreiselheimer Foundation  
Thomas and Gwen Kroon  
Benjamin Leifer  
Charlotte Lin and Robert Porter  
Sally and Bill Neukom  
Gaye and Jim Pigott (Moccasin Lake Foundation)  
Douglas and Theiline Scheumann  
Jon and Mary Shirley Foundation  
Mary Snapp  
James and Katherine Tune  
Arlene Wright

### First Chair

#### \$5,000 - \$9,999

Chap and Eve Alvord  
Norman Archibald Charitable Foundation  
Steve Behnen and Mary Hornsby  
Sally S. Behnke  
Pam and Gary Beil  
Becky and Jack Benaroya  
Judith and Robert Bitterli  
C. Kent and Sandra C. Carlson  
Matthew Clapp  
Melanie Curtice  
Mrs. Jane Davis and Dr. David R. Davis  
Peter and Peggy Horvitz  
Andrea and Steve Jones  
Pamela McCabe  
Douglas and Joyce McCallum  
Bruce and Jolene McCaw  
Sandy and Chris McDade  
Elaine Nonneman

Rodger and Karen Riggers  
John Sims and Trish Espedal  
Anthony and Linda Whatley  
Dr. Clyde and Mrs. Kathleen Wilson  
Ann P. Wyckoff

### Encore

#### \$2,500 - \$4,999

Kim A. Anderson  
Casey Banack  
Donna and Anthony Barnett  
John H. Bauer  
Annette and Daniel Becker  
Douglas P. Beighle and Kathleen Pierce  
Michael and Anne Bentley  
James and Deborah L. Bevier  
David D. and Kristi Buck  
Sue and Artie Buerk  
Carl F. Bunje, Jr. and Patricia M. Costello  
Darren Carnell  
Allan and Nora Davis  
Rebecca Engrav  
Paul and Tracy Ficca  
Kevin P. Fox  
David E. Gannett  
Lynn and Brian Grant  
Maria Mackey Gunn  
Darren Hamby  
Ray Heacox and Cynthia Huffman  
Richard and Marilyn Herzberg  
Ms. Heather Howard  
Mr. and Mrs. Wendell Hurlbut  
Margaret Inouye  
Michael Leake  
Richard and Francine Loeb Family Foundation  
Mr. Richard Magnuson  
Tim Mauk and Noble Golden  
Paul C. Mayer  
Anthony R. Miles  
Douglas E. and Nancy P. Norberg  
Nancy S. Nordhoff  
Glenna Olson  
Marlene Price  
Clifford G. Bunch and David A. Pritchard  
Herman and Faye Sarkowsky  
Schoenfeld-Gardner Foundation  
Roxanne Shepherd and Gerald Kroon  
Patti and Trent Thomas  
Mark and Arlene Tiberghien  
Anonymous

### Spotlight

#### \$1,000 - \$2,499

Scott and Monica Anderson  
Scott and Sarah Armstrong

Mr. and Mrs. Robert M. Arnold  
Bob and Clodagh Ash  
Bill Badger and Edie Cook  
Hugh Bangasser  
Eileen L. Barber  
Eric Barkan and Gail Bankovich  
Bob and Melissa Barrett  
Daniel and Jaycee Barrett  
Kevin and Gretchen Baumgardner  
C.T. Bayley Family Fund  
Ron Berenstein  
Les Biller  
Charles Bingham  
Alan and Sally Black  
W. Clayton Bland  
Karen J. Bower  
Jill D. Bowman  
William C. Branley  
Toby Bright  
Maggie and Tom Brown  
Michael and Patricia Brustkern  
Stacey Buffo  
Jon J. Cannon  
Gary and Chris Carpenter  
Steve Carver  
Judith Chapman  
Alex Chen  
Angela Cheung and Matthew Sekits  
Kim Ackerley Cleworth  
Kaci Clot  
Dave Curry  
Mr. Peter Davis  
Ted A. David  
Cynthia del Rosario  
Dee Dickinson  
Mr. and Mrs. Patrick J. Dineen  
Melanie and Robert Dressel  
Mary Dunnam  
Dave Edwards and Pat Shuman  
Karl Ege  
Mr. Peter Ehrlichman  
Jim and Gretchen Faulstich  
Jon Fine and Paula Selis  
Jesse Franklin  
William Franklin  
Eric Freyberg  
Dan and Mareth Fulton  
Joseph M. and Gloria T. (Terri) Gaffney  
Bill and Mimi Gates  
Dwight Gee and Barbara Wright  
Robert Gekler  
Slade and Sally Gorton  
Paul Grace  
Rush Green  
Leo Griffin III

Wes and Karen Hagen  
Aya Hamilton  
Phillip and Sally Hayes  
Richard and Betty Hedreen  
Nathan Herring and Miller H. Sherling  
The Sandy and Steve Hill Family  
Fund of The Greater Tacoma Community Foundation  
Suzanne Hittman  
John Holt and Susan Trainor Holt  
Dan and Connie Hungate  
Melissa Hurd  
Jeff Ing  
Randy Inouye  
Bruce E.H. Johnson  
Linda and Ted Johnson  
Brad Jones  
Melony Joyce  
Paul and Alice Kaltinick  
Justin Kane  
Janet W. Ketcham  
Ken and SaSa Kirkpatrick  
Karen Koon  
Gregory Kusnick  
Ron Lamarche  
Bill LaPatra  
Kimberly Leary  
Ben and Quynh Lee  
Kaigene Lin  
Susan Linde  
Keith and Beth Loveless  
Paul and Lita Luvera  
Mr. Jeffrey S. Lyon  
Scott and Nancy MacCormack  
Joe and Mary Magnano  
Marcia Mason  
Bob and Kathy McCleskey  
McEachern Foundation  
George Weyerhaeuser Jr. and Kathy McGoldrick  
Karen and Rick McMichael  
Marshal McReal and John Friedman  
Jimmie Mendoza  
Alan Merkle and Linda Todd  
Nancy and Charles William Mertel  
John Mettler  
Kelly Miller and Ruth Stolk  
Glen Mills  
Robert B. Mitchell  
Troy M. Monson  
Denise Nakamura  
Peter and Arlene Niklaus  
Charles and Eleanor Nolan  
Rich Olender  
Tim O'Connell

Mary Ellen Olander in Memory of  
Barry Joseph Booher  
Nathan Oliver  
John and Deanna Oppenheimer  
George and Terry Pagos  
Mina B. Person  
Rajesh Potti  
Ms. Carol Powell  
Jeannette M. Privat  
Leigh and Louise Rabel  
The Rabel Family Advised Fund  
Douglass and Katherine Raff  
Brooks and Suzanne Ragen  
Scott Redman  
Victoria Reed  
Liming Ren  
Ms. Mary Ritzman  
Douglas and Linda Rix  
Mark W. Roberts  
Alan Rothblatt  
Len and Gerry Rozek  
Gladys Rubinstein  
Stanley D. and Ingrid H. Savage  
Keith Schreiber and Clare Kapitan  
Jane Simpson  
Elaine Spencer and Dennis Forsyth  
Elizabeth Ryll and Richard Stead  
Carolyn J. Steiner  
Brandon Stenerodden  
Tenny and Ida Stenerodden  
Bill and Bobby Street  
Suzanne Suneson  
Kelly Sutter and Andreas Vogt  
Jillian Titus  
Fred and Jan Tompkins  
Betty Lou and Irwin Treiger  
Jean Viereck and Robert Leventhal  
W Foundation  
Wilf Wainhouse  
Douglas and Margaret Walker  
Tom and Connie Walsh  
David Waring  
Mr. and Mrs. John D. Warner  
Joan Watjen  
Lisa Wessling  
Gail and Bill Weyerhaeuser  
Laura Neebeling Whitaker  
Mark Wittow and Gail Gattton  
Mike and Jen Woodman  
Rick and Jennifer Woods  
Carol Wright  
H.S. Wright, III and Katherine Janeway  
Virginia B. Wright  
Andrew and Trish Zuccotti

## Corporate Circle

**\$300,000 and up**  
Microsoft Corporation

**\$200,000 - \$299,999**  
The Boeing Company

**\$100,000 - \$199,999**  
Safeco Insurance Foundation

**\$50,000 - \$99,999**  
Bank of America  
Expeditors International of Washington  
JPMorgan Chase  
PACCAR Inc  
Starbucks Coffee Company  
U.S. Bank  
Wells Fargo

### \$25,000 - \$49,999

ADP/Cobalt  
Amgen, Inc.  
Costco  
KeyBank  
Puget Sound Energy  
Russell Investment Group  
Weyerhaeuser Company

### \$10,000 - \$24,999

Comcast  
The Commerce Bank of Washington  
Mellon - Private Wealth Management Group  
Nordstrom, Inc.  
Perkins Coie  
RealNetworks  
Sellen Construction  
Symetra Financial Corporation  
UBS Financial Services

### \$5,000 - \$9,999

Alaskan Copper & Brass Company/Alaskan  
Copper Works  
APCO Worldwide  
CH2M HILL  
Columbia Bank  
Dorsey and Whitney LLP  
Financial Resources Group  
Foss Maritime Company  
Gaco Western, Inc.  
Goldman, Sachs & Co.  
Gordon, Thomas, Honeywell, Malanca, Peterson & Daheim  
Group Health Cooperative  
K&L Gates  
KING Broadcasting  
Medical Consultants Network, Inc.  
Nintendo of America Inc.  
PhenoPath Laboratories PLLC

R.D. Merrill Company  
Rowley Properties  
Sparling  
Stoel Rives LLP  
Union Bank

### \$2,500 - \$4,999

Ben Bridge Jeweler  
Compton Lumber Company  
Davis Wright Tremaine LLP  
Ernst & Young LLP  
Fishing Company of Alaska  
Hos Bros. Construction, Inc.  
Marsh Private Client Services  
Northern Trust Bank  
Osberg Construction Company  
Pacific Coast Feather Company  
Raisbeck Engineering, Inc.  
Stafford Frey Cooper  
Wright Runstad & Company

## Workplace Giving

By hosting employee campaigns and/or matching employee gifts, the following companies provide ArtsFund with the most workplace affiliated donations. Thank you to these companies and their employees for their commitment to the arts.

**\$50,000 and up**  
The Boeing Company  
Sellen Construction

### \$20,000 - \$49,999

King County Employee Charitable Campaign  
Microsoft Corporation  
POP

Puget Sound Energy  
Stoel Rives LLP  
Washington State Employee Combined Fund Drive

### \$7,500 - \$19,999

ArtsFund  
Davis Wright Tremaine LLP  
DLA Piper

Dorsey and Whitney LLP  
K&L Gates  
Medical Consultants Network, Inc.  
Perkins Coie  
Sparling

## In-Kind Donors

**\$20,000 and up**  
Alaska Airlines, Inc.  
Comcast  
Dwafler  
EXCLAIM  
POP  
The Seattle Times  
Space Needle

**\$7,500 - \$19,999**  
William B. Beyers  
Puget Sound Business Journal  
GMA Research Corporation  
Presentation Services  
Seattle Mariners Baseball Club

**\$1,000 - \$6,499**  
Bentall Capital  
Chateau Ste. Michelle Winery  
Cheyette & Associates  
ColorGraphics  
Garden Tapestry  
Hansen Design Company/Pat Hansen  
Herban Feast, Inc.  
Holland America Line

Matthew Parker  
Museum Quality Framing  
The Odom Corporation  
Passport Travel & Tours  
Pickwick  
The Production Network  
Sorrento Hotel  
Starbucks Coffee Company  
Ten Mercer

FOR A FULL LIST OF ARTSFUND'S DONORS AND TO LEARN MORE ABOUT ARTSFUND PLEASE VISIT [WWW.ARTSFUND.ORG](http://WWW.ARTSFUND.ORG)

# Special Fund Donors

## ACT Endowment Fund Donors

ACT's endowment is administered by A Contemporary Theatre Foundation.

Buster & Nancy Alvord • Joan & Larry Barokas • Michael Corliss-Investco • Katharyn Alvord Gerlich • Becky & Jack Benaroya • Charles Blumenfeld & Karla Axell • The Ewert Family • Bruce & Dawn Goto • William Randolph Hearst Endowed Fund for Education & Outreach Programs • Kreielsheimer Remainder Fund • Doug & Nancy Norberg • Sally Pence • Katherine & Douglass Raff • Brooks & Suzanne Ragen • Herman & Faye Sarkowsky • David E. & Catherine E. Skinner • Kayla Skinner • Estate of Stuart Smailes • David & Joyce Veterane • The Peg & Rick Young Foundation

## Special Thanks

ACT gratefully acknowledges the following for their contributions to this production and season:

Keith Johnsen, Daqopa Brands LLC • Moby's Restaurant • Seattle Children's Theatre • AJ Epstein • Seattle Repertory Theatre • UW Drama • Matt Goodrich • Avast Studios • John Ulman • Dave Parmly • QuickTin Sheet Metal Fabrication • Stacya Silverman and Associates Eyebrow Shaping

## New Works For The American Stage — A Special Thanks to ACT's Commissioners

ACT's New Works for the American Stage commissioning program attracts commissioners who want to come in direct contact with the creative process. Donors get to know leading playwrights and hear their earliest drafts, watching as ideas become scripts. Our commissioners are venture capitalists of new ideas, and we commend their bravery and commitment to new work.

**Becky's New Car**  
by Steven Dietz

Commissioned by  
Charles Staadecker  
in honor of Benita  
Staadecker

**Hell Leaves Odessa**  
by Julie Marie Myatt

Commissioned by  
Art Wahl in honor of  
Eva Wahl

**How to Remove  
Blood from a Carpet**  
by Laura Schellhardt

Commissioned by  
Paul and Paula Butzi

**TITLE TBA**  
by Jason Grote

Commissioned by  
Gian-Carlo and  
Eulalie Scanduzzi

**Maggie Cassidy**  
by Chris Jeffries

Commissioned by  
Dennis Forsyth  
in honor of  
Elaine Spencer

**The Final Days of  
Negroville**  
by Keith Joseph Adkins

Commissioned by  
Gian-Carlo and  
Eulalie Scanduzzi

## Producing Partners ACT gratefully acknowledges the following for their contributions to this production and season:



A CONTEMPORARY THEATRE  
FOUNDATION

amazon.com



JPMORGAN CHASE & CO.

Microsoft

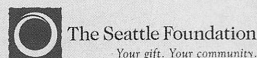


NESHOLM FAMILY  
FOUNDATION



THE PAUL G. ALLEN  
FAMILY foundation  
CELEBRATING 20 YEARS

PONCHO  
artematter



THE SHUBERT  
FOUNDATION INC.

WASHINGTON STATE  
ARTS COMMISSION



THE JOHN GRAHAM FOUNDATION

EULALIE BLOEDEL SCHNEIDER ARTIST FUND



# Community Partners

ACT gratefully recognizes the following corporations, foundations, and government agencies for their generous support of our 2010 & 2011 programs. Without such tremendous community support, ACT would not be able to offer outstanding contemporary theatre, in-school educational programming, or community based outreach.

*This list reflects community giving from September 15, 2010 through September 14, 2011.*

## Executive Underwriters

(\$100,000+)

ArtsFund  
Eulalie Bloedel Schneider Artists Fund

## Season Sponsors

(\$50,000 - \$99,999)

Office of Arts & Cultural Affairs, City of Seattle  
John Graham Foundation  
The Andrew W. Mellon Foundation  
The Shubert Foundation, Inc.

## Producing Partners

(\$25,000 - \$49,999)

4Culture  
Amazon.com Inc.  
Ballinger Family Foundation  
The Boeing Company  
JPMorgan Chase Foundation  
Nesholm Family Foundation  
The Paul G. Allen Family Foundation  
Wells Fargo Advisors

## Performance Partners

(\$10,000 - \$24,999)

Columbia Crest Grand Estates\*

Elizabeth George Foundation  
Harvest Foundation  
Legacy Group\*  
Microsoft Corporation  
PONCHO  
The Seattle Foundation  
Starbucks Coffee\*  
United Airlines\*  
Washington State Arts Commission  
The Peg & Rick Young Foundation

## Stage Partners

(\$5,000 - \$9,999)

A Contemporary Theatre Foundation  
Apulent Catering and Special Events Company\*  
ArtsFund/Mary Helen Moore Diversity Fund  
Norman Archibald Charitable Foundation  
Fox Foundation  
Bob & Eileen Gilman Family Foundation  
Horizons Foundation  
Joanie's Catering\*  
Responza LLC\*  
Sea-Tac Lighting & Controls, LLC\*  
TEW Foundation  
Tony's Events & Catering\*  
Tuxedos and Tennis Shoes

## Benefactors

(\$1,000 - \$4,999)

Alaskan Copper & Brass Company  
ArtsFund/John Brooks Williams and John H. Bauer  
Endowment for Theatre  
Bill Speidel Enterprises  
City Hardware\*  
Daily Grill\*  
Fales Foundation Trust  
TheFilmSchool  
Graham & Dunn  
Holland America Lines\*  
K&L Gates LLP  
McAdams Wright Ragen  
Moby's Restaurant\*  
Pacific Place  
Pike Brewing Company\*  
Queen Anne Painting Company  
Seattle Steam Corporation  
Serenza Salon & Spa\*  
Towers Watson  
Wyman Youth Trust

## Media Partners

KING-FM  
KCTS 9

\*Support provided through in-kind contributions

## The ACT Legacy Society



The ACT Legacy Society honors those who remember ACT in their wills or other estate plans. Legacy Society members ensure ACT's ongoing tradition of presenting the best of contemporary theatre for future generations. Even persons of modest means can make significant future gifts by using tax-advantaged estate and financial planning techniques.

Notify ACT of your arrangements by calling  
(206) 292-7660 ext. 1321.

## Contact Us

### ACT— A Contemporary Theatre

Kreielsheimer Place  
700 Union St.  
Seattle, WA 98101

Administrative Office: (206) 292-7660  
Development: (206) 292-7660 x1331

### Ticket Office

In person: on performance days, the ticket office is open from noon until show time. *Closed Mondays and major holidays.*

**Phone:** (206) 292-7676, Tue.-Sun., noon – 7:00 p.m.

**E-mail:** [service@acttheatre.org](mailto:service@acttheatre.org)

**Online:** [www.acttheatre.org](http://www.acttheatre.org)

# ACT Circle of Donors

ACT creates consciousness through theatre. Our work is powered by the investment of our community. We would like to recognize and thank the many generous individuals who have made contributions to A Contemporary Theatre over the past year. You inspire and amaze us all.

*The following list reflects pledges and gifts made to the Annual Producing Fund between September 15, 2010 and September 14, 2011.*

## \$100,000+

Mrs. Nancy Alvord  
Katharyn Alvord Gerlich  
Gladys Rubinstein  
Eulalie M. & Gian-Carlo Scanduzzi

## \$50,000 – \$99,999

Chap & Eve Alvord  
Thomas P. Bleakney & Margaret Stanley  
Virginia & Bagley Wright  
Anonymous

## \$35,000 – \$49,999

Kurt Beattie & Marianne Owen

## \$20,000 – \$34,999

Jean Burch Falls  
Linda & Brad Fowler  
Chuck Sitkin  
Elaine Spencer & Dennis Forsyth

## \$15,000 – \$19,999

Becky & Jack Benaroya  
Paul & Paula Butzi  
Michael & Leslie Lebeau

## \$12,500 – \$14,999

Linda & George Ojemann  
Barry & Colleen Scovel  
Brian Turner & Susan Hoffman  
Vijay & Sita Vashee

## \$10,000 – \$12,499

Lance Becker & Karen Roberts  
Laurie Besteman & Jack Lauderbaugh  
Linda Brown & Larry True  
Sonya & Tom Campion  
James Degel & Jeanne Berwick,  
Berwick Degel Family Foundation  
Gregory & Diane Lind  
Katherine & Douglass Raff  
Carrie D. Rhodes  
Herman & Faye Sarkowsky  
Robert & Shirley Stewart  
Anonymous

## \$7,500 – \$9,999

Allan & Anne Affleck • John Siegler & Alexandra Read, MD • David & Shirley Urdal • Dr. Sheree Wen • Anonymous

## \$5,000 – \$7,499

Sheena Aebig & Eric Taylor • Daniel Alexander • Melinda & Walter Andrews • Joan & Larry Barokas • Allan & Nora Davis • Jane & David R. Davis • Betsy & Charles Fitzgerald • Eliza Flug-Coburn • Ellen & William Hazzard • James & Barbara Heavey • Richard Hesik & Barbara Johns • David & Rosalie Holcomb • Deborah Killinger • Petra Franklin Lahaie • Jane W. & James A. Lyons • McKibben Merner Family Foundation • Louise J. & Samuel B. McKinney • Kelly Miller & Ruthann Stolk • Dr. Arnie & Judy Ness • David Rose & Diane Lye • Jo Anne & Donald Rosen • Jean Viereck & Robert Leventhal • Jean Walkinshaw • Clifford & Karen Webster • Herbie Weiss • Marcia & Klaus Zech • Anonymous (3)

## \$3,500 – \$4,999

Bill & Janette Adamucci • Ben & Marianne Bourland • Colin & Jennifer Chapman • Salil & Rashmi Dave • Thomas P. & Christine M. Griesa • Edward Miesen • Grace Nordhoff & Jonathan Beard • Annette Toutonghi & Bruce Oberg

## \$2,000 – \$3,499

Richard & Constance Albrecht • Kermit & Danna Anderson • Susan & Lauren Anstead • Christine & Perry Atkins • Peter & Fran Bigelow • Kimberly & Kyle Branum • Corinne A. Campbell • D.T. Challinor • Steven & Judith Clifford • Theodore & Patricia Collins • Patricia Daniels & Bill Kuhn • Lori Eickelberg • Natalie Gendler • Kelly & Jeffrey Greene • Stephanie M. Hilbert • John & Ellen Hill • Heather & Grady Hughes • Joseph & Linda Iacolucci • Stu & Sandy Jacobson • Katherine Ann Janeway & H.S. Wright III • Lisa & Norman Judah • William & Sandy Justen • Josef Krebs • Lauren Mikov • Mark & Susan Minerich • Douglas & Nancy Norberg • Valerie D. Payne • Mary Pigott & Roger Giesecke • Ann Ramsay-Jenkins • Jason Richert • Eric & Margaret Rothchild Charitable Fund • Evelynne Rozner & Matt Griffin • Sean Shanahan & Kathleen McGill • Debra Sinick & David Ballenger • David E. & Catherine E. Skinner • John & Rose Southall • Spark Charitable Foundation • Ron & Carol Sperling • Charles & Benita Staadecker • Dana M. Stout • Mark & Arlene Tibergien • Jim & Kathy Tune • Kevin Wilson & Emily Evans • Diana White • Anonymous

## \$1,000 – \$1,999

Mr. & Mrs. Willie C. Aikens • John Akin & Mary Stevens • Kenneth & Marleen Alhadeff • Eric Bahn • Kendall & Sonja Baker • Dr. Benson & Pamela Harer • Irv & Luann Bertram • Alan & Sally Black • Susan & Jeff Bland • Dr. William Calvin & Dr. Katherine Graubard • Ronald & Leila Cathcart • Donald Cavanaugh • Linda & Randy Clark • Judy & Bob Cline • Frank & Joan Conlon • Dennis & Deborah DeYoung • Marcia Engel • Jeannie Falls • Jim & Gretchen Faulstich • Denise & David Foster • Gary J. Fuller & Randy L. Everett • Boyd & Ann Givan • Charles & Lenore Hale • Valerie Hamrick & Randall Whiteside • Edgar Hansen • Lawrence & Hylton Hard • Erik & Evy Haroldson • Stephen B. Hilbert • Vaughn Himes & Martie Ann Bohn • Gary & Parul Houlahan • Dan & Connie Hungate • Judith Jesiolowski • David Thompson • Linda & Ted Johnson • Jerry Kimball & Marjorie Raleigh • Asuman Kiyak • Joanne M. Kuhns • George & Linda Lamb • Steven & Anne Lipner • C. Gilbert Lynn • Alice Mailloux • Theodore & Mary Ann Mandelkorn • Tony Martello • Pamela Burns McCabe • Frances Mead • Gail & John Mensher • Terry Miller • Gloria & David Moses • Zack Mosner & Patty Friedman • Dayle Moss & David Brown • Bill & Mary Ann Mundy • Mardi Newman • James Nichols • Chris & B.J. Ohlweiler • Kristin Olson • Hal Opperman & JoLynn Edwards • Nancy Pearl • Gregg & Shelley Percich • Bill & Beth Pitt • Stuart Platt & Melanee Daniels • Hermine R. Pruzan Memorial Fund, Jewish Federation of Greater Seattle • Alan Rabinowitz • Brooks & Suzanne Ragen • Catherine & Thurston Roach • Jeff Robbins & Marci Wing • David and Valerie Robinson Fund • H. Stewart Ross • Bill & Rae Saltzstein • John Saul • M. Darrel & Barbara Sharrard • Kathleen Sneden-Cook & Jack Cook • Garth & Drella Stein • Kim Stindt & Mark Heilala • Jeffrey A. Sutherland • Tamzen Talman • Taucher Family Foundation • Franklin & Stephanie Thoen • Dirk & Mary Lou vanWoerden • Judith Warshal & Wade Sowers • Carol Webb & Don Holz • Jennessa & Robert West • The Whitsitt Family • Scott & Shirley Wilson • Susan Wolcott & George Taniwaki • Jane & Leonard Yerkes • Anonymous (5)

## \$500 – \$999

Ginny Abramson • Tom Alberg & Judi Beck • Bruce & Karen Babbitt • Dave & Marge Baylor • Tobie Beauchamp-Loya • Carolyn Bechtel • Charlotte L. Behnke • Eric & Susan Benson • John Blackman • Charles Blumenfeld & Karla Axell • John Boling • Cleve & Judith Borth • Jerome & Barbara Bosley •

Stanley & Barbara Bosse • Brian Branagan & Carissa Sanchez • Matthew Brantley • Beth & John Brennen • Jan Brucker & Lauren Barber • Carl Bunje & Patricia Costello • Alyssa C. Byer • Cindy Chin & Robb Graham • Clark Family Charitable Fund • Judy & Bob Cline • Nicole Boyer Cochran • Zan & Stephan Collier • Jack Cook • Steve Coulter • George & Carolyn Cox • Chris Curry • Lois & King Curtis • Adam de Boor & Mari Osuna • Dottie Delaney • Ben & Kathy Derby • Michelle Lorenz • Luella & Harold Drevecky • Gail & Shmuel El-Ad • Joanne R. Euster • Deborah Fialkow • Robert E. Frey • Betty Fuchs • Maradel Krummel Gale • Laurie Galland • Richard & Mary Beth Gempeler • Sergey Genkin • Genevra Gerhart • Mary M Gilbert • Cynthia Gossett & Derek Storm • Joel & Angie Gregory • Eugene & Rena Hamburger • Hashisaki/Tubridy Family • Daniel & Whitney Hazzard • Margot & Paul Hightower • Donna Holpainen • Sara Comings Hoppin • Robert Howie & Maria Milano • Susan & Philip Hubbard • Dean M. Ishiki • Ann Janes-Waller & Fletch Waller • David B. Johnson • Bette Nicotri-Jones • Clare Kapitan & Keith Schreiber • Marion B. Keen • Debra Kelley • Margot Kenly & Bill Cumming • Jane Jollineau Kennedy • Amy Faherty & Jeff Kephart • Weldon Ihrig & Susan Knox • Karen Koon & Brad Edwards • Rob Lehman & Christopher Mathews • Jim Lobsenz & Elizabeth Choy • Larry & Phyllis Loeb • Laura Lundgren • Alex & Lynn MacDonald • Susan & Mike MacFadden • Jeff Manzolli & Sing Bing Kang • Andrew & Cynthia Marin • Liz & Lyle Martin • May Louise McCarthy • Jane Carrier & Nancy McCraney • Ann McCurdy & Frank Lawler • Joy McNichols • Henry Miyoshi & Susan Woyna • Wesley Moore & Sandra Walker • Morningside Foundation • Sallie & Lee Morris • Zack Mosner & Patty Friedman • Pamela Mulken • Jim Mullin • Sarah Navarre • Kristin Olson • Angela Owens • Cynthia & Bruce Parks • Jeff & Deborah Parsons • Donald Pogoloff • Steve Poteet • Joan Potter • Lucy & Herb Pruzan • Ben & Margit Rankin • Craig & Melissa Reese • Cindy & Lance Richmond • Richard Andler & Carole Rush • Barbara Sando • Michael Scheinine • Gilbert Scherer & Marilyn Friedlander • Shelley Schermer • Mike Scully • Randolph & Lynn Beaty Sealey • Thomas & Susan Shalles • Michael C. Shannon • Karen Shaw & Larry Hohm • Jeanne Sheldon & Marvin Parsons • Alec & Jane Stevens • Bettina Stix • Isabel & Herb Stusser • Craig Tall • Joan E. Thacker • Gail Thompson • Timothy Tomlinson • Kim & Ann Torp-Pedersen • Annette Toutonghi & Bruce Oberg • Paul G. & Mary Lou Dice Vibrans • Judy & Mike Waring •



# ACT Circle of Donors

Allan Whitcomb & Lis Eddy • Philip & Susan White • Marjory Wilkens • Douglas & Dianne Wills • Bill & Jennifer Woyski • Ann P. Wyckoff • Melissa A. Yeager & Cory Van Arsdale • Joyce & Christian Zobel • Igor Zverev & Yana Solovyeva • Anonymous (11)

## \$250 – \$499

Sue Albrecht • Jerry Anches • Sharon Anderson • Daniel & Kristie Anderson • Jane & Brian Andrew • Loren & June Arnett • Robert M. Arnold • Adel Assaad • Diane & Jean-Loup Baer • Shawn Bai & Michelle Dunlop • Jerry & Judy Baker • Denise Bassett • Jim & Kathleen Bellomo • Dr. & Mrs. Bensinger • Ruth & Greg Berkman • Linda Betts • John Bianchi & Scott Warrender • Gail & Randy Bohannon • Wendy Bradbury • Karen Brattesani & Douglas Potter • Roberta & Victor Bremson • June & Alan Brockmeier • Dorothy A. Brown • Clara Bryan • Gordon Buchan • Carol & Jonathan Buchter • Nancy Hansen & James Burnell • Peter Buser • Judith Callahan & John Van Bronkhorst • Tony & Margaret Catanzariti • Aline & Dennis Caulley • Jack Clay • Clement Family Foundation • Greta Climer & Kevin Kennedy • Arian Colachis & Ian Glass • Judith & Thomas Connor • Kevin Cuba • Susanne & Steve T. Daley Charitable Fund • Donald Dally • Dan & Esther Darrow • Craig Davis & Ellen Le Vie • Ron & Jan Delismon • James & Amanda Devine • Paula Diahn & Frank Hughes • Shelley Dion • Bob Donegan • Ellen Downey • Vasiliki Dwyer • Matthew Echert • Mickey & Jeanne Eisenberg • Susan Elizabeth • A.J. Epstein • Michael Evans • Bill & Karen Feldt • Teresa Irene Ferguson • Clayton & Katherine Fleming • Mac & Charlene Fletcher • Bruce Florsheim • Rick Freedman • Dorothy (Dot) V Fuller • Lucy Gaskill-Gaddis & Terry Gaddis • Jean Garber & Clyde Moore • Jean Gardner • Pam Gates & Cliff Solomon • Max Gellert • Patricia Gervais • Martin Gibbins • Paula Crockett • Sue Gilbert • Richard & Faye Gillett • Carolyn Gleason • William Goldberg & Virginia Leen • Claire & Paul Grace • Mott Greene • Ted & Sandra Greenlee • Bernadine & Sean Griffin • Alexandre Grigorovitch • Vera Kirichuk • Carl & Barbara Grimes • Paul & Sheila Gutowski • Lowell & Kathie Hagan • Diana & Peter Hartwell • John & Gerry Hay • Roger Nyhus & Rod Hearne • Richard & Susan Hecht • Jim & Linda Hoff • Christine Hoffman • Gretchen Hull • Dr. Julie Hungar • Earl & Mary Lou Hunt • Ashton Hyman • Toshiye Ishisaka • Joel Ivey & Sheryl Murdock • Stu & Sandy Jacobson • Susan & Fred Jarrett • Tom Jensen • Peter Joyce • Gail & David Karges • Paul Kassen • Jeffrey Kay • Pavel Curtis & Kathleen Kells • Beverly & Otis Kelly • Peggy Kleyn • Agastya Kohli • Jim & Jean Kunz • Jill Kurfurst • Bob & Janet Lackman • Max Langley • David & Catharine Lawson • Teri Lazzara • J. Robert Leach & Vickie Norris • Mary & Elizabeth Reeves Leber • Dave & Linda Leisy • Gary, Jane, Jessica & Ali Lindsey • Dan & Julia Little • Mark P. Lutz • Stephen & Ellen Lutz • PJ Hough & Mary Lydon • Kevin Lynch • Dan & Carol Madigan • Charles & Aileen Mangham • Barbara Martyn • Shaula & Darrin Massena • Bonnie Matson • Arthur Mazzola • Barbara & Roger McCracken • Nicole McHale • Shawna & Lachlan McLean • Sarah B. Meardon • Robert & Susan Mecklenburg • Russell Metz • Eugene & Donna Mikov • Tom & Nancy Miller • Megan Moholt • Adam & Shellie Moomey • Terry & Cornelia Moore • Annette & Gordon Mumford • John Naye • Cindy & Ed Neff • Dan Niles • Craig & Deanna Norsen • Lisa O'Brian • Kenneth Olsen • Jerry Olson • Don & Helen Owens • John Palmateer • Sandra Pappas • Susan Perkins • Cynthia Phelps • Greg & Sherre Piantanida • Judy G. Poll • Deb Prince & Jerry Diercks • Bradley & Caroline Probst • Kathy Hagiwara Purcell • Darryn Quincey & Kristi Falkner • Linda Quirk • Mr. & Mrs. John Radovich • Kathryn Raich & David Jones • Jeff & Pat Randall • Harley Rees • Richard Reuter • Jan & Kerry Richards • Laurie Richardson • Clay & Patty Richmond • Marilyn Robbins • Bruce Robertson • Nancy M. Robinson • Ernestine Rombouts • Ryan Rowell • M. Lynn Ryder Gross • Elizabeth Ryll & Richard Stead • Jerry Sale & Rachel Klevit • Marybeth & Jerry Satterlee • Paul & Terri Schaake • Melissa Schafer • Terry Scheihing & Ben Kramer • Duane & Pat Schoepbach • Karen & Patrick Scott • David & Elizabeth Seidel • Charles & Andora Sharpe • Ginny & Leonard Shulman • Sonia Siegel Vexler & Paul Vexler • Keith & Teresa Simanton • Jeff Slesinger • Alan & Susan Smith • Dave & Karen Smith • David Spellman • Margaret Stoner & Robert Jacobsen • Earl & Charlotte Sutherland • Bill & Pat Taylor • Franklin & Stephanie Thoen

• I. M. Thomas • Dennis M. Tiffany • Christopher & Mary Troth • Janet Upjohn • Padmaja Vrudhula • Beverly Wagner • Mary & Findlay Wallace • Carol & Jeff Waymack • Randall Weers • Jim & Sharron Welch • Scott & Jan Weldon • Howard West & Wendy Hassan • Westbrook Family • Gregory Wetzel • Don & Judy Wilson • Barry & Peggy Witham • Erin Wong • Judith Woods • Wyman Youth Trust • James & Patricia Zettas • Marie R. Zobrist • Anonymous (5)

## \$100 – \$249

Jo Addison • Ms. Michael Adler • David Aggerholm & Gwendolyn Lundberg • Muriel C. Albert • Donna Albright • Bob Alexander & Kathleen Devon • Inez Allan • Frank & Nola Allen • Bonni & Irv Alpert • Michael Anderson • Susan & John Anderson • Barbara H Anderson • Gary & Jean Anderson • Mindy Anderson • William Anderson • Basil & Gretchen Anex • Marolyn Arsenault • John Attebery • Aust Family • Cheryl & Jack Avery • John & Mary Aylward • Morris & Sharon Babani • Lydia Bagwell • Thatcher Bailey • William J. Bain, Jr. • Janet Bakke • Ron Baltrusis • Jerry Barbera • Byron & Connie Barnes • Jeff Barrett & Annalisa Gellermann • John & Janet Bauer • Derek Baylor • Bill & Cassandra Beck • Derek Beck • Ken & Lori Becker • Julie Beckman & Paul Lippert • Kathleen Bemis & Don Blair • Bill & Rita Bender • Dana & Bart Berg • H. S. Berglund • Louis & Shirley Bernstein • Mick & June Betsch • Teresa Bigelow • Jonathan Billow • Dennis Birch & Evette Ludman • Andrew Bishop • Inez Noble Black • Jerry Bloomer • Barbara Blywise • Tim Bohlin • Caroline Bombar-Kaplan • Margie Bone • Melissa Borders • Lee & Barbara Bourdeau • J Ray Bowen • Howard Boyd & K. Finkenhofe • John Bradshaw • Julie & Peter Braman • Mary Anne Braund & Steve Pellegrin • Barry & Patricia Briggs • Zoey Brodsky • Mary Ann Brokaw • Niloa Brooklyn • Kyle & Marilyn Brown • Marshall & Jane Brown • Steve & Stefanie Brown • Dr. James & Donna Brudvik • Val Brustad • Anne Buchinski • Marc Coltrera • Jordan Buck • Richard & Margaret Buckwitz • Vlad Bucur • Harriet Bullitt • Tina Bullitt • Suzanne Burke • Carol & John Burns • Mary Jo & Partick Burns • Michael Bush • Linda Bushnell • James Bushyhead • Christina Surawicz • Henry & Olga Butler • Marilyn Byrne • James Lombardo • Anne & John Cahn • Susan Campbell • Karen M. Campbell • Luther & Frances J. Carr • Steve & Midge Carstensen • Joan Carufel • Mary Casey-Goldstein & Steve Goldstein • Jane & Scott Casselman • Michael & Sally Cassidy • Louise Castor Wilkinson • Sharon Cates • Marcel Ceballos • Mark & Betsy Chamberlin • Jim & Peggy Champin • Mark Chandler • Terrill Chang & Jan Fauli • Suzanne & Nick Charles • M.G.A. Charlesworth • Lynne & David Chelimer • Katie Chobot • Barbara & Ken Christoferson • Maureen & Martin Christoffel • Mr. & Mrs. Royce F. Church • Andrew Ciapalo • Tom Clement • Richard Clow • Michael & Hannah Coan • Penny & Buzz Coe • Duane & Terrie Coffey • Dana Cogswell & Andrea Radosevich • Sal Cohen • Deborah Cohen • Susan Coldwell • Tom & Susan Colligan • Margaret Collinge • Susan Compatore • Deborah Conger • Loveday Conquest • Rachael Contorer • Richard Conway & Susan Williams • Ann Cook & Greg Thies • Whitney & Adam Cornell • Frank Corrado • James & Marguerite B. Coulter • Mike & Pam Courtnage • Dana Elena Cozmei • William & Marilyn Cranston • Dennis & Anamarie Crawley • Wayne & Jean Crill • Anthony Croghan • Linda Crome • John & Catherine Crowley • Reidun Crowley • Tracy Cutchlow • Barb & Phil Cutler • Cheri Dammann • Carol Davidson • Emily Davis • Richard A. & Nancy J. Davis • Clayton & Karen Dawson • Mr. James Deal • Mark Dean • Dugan & Marti Dean • Keith Dearborn & Alison Moss • Paul & Sandy Dehmer • Joel & Bonnie Derby • James & Shelley Dillon • Janice Dilworth & Greg Denton • Lynn Dissinger • Jim & Barb Donnette • Mary Beth Maines & James Downing • Lyndsay Downs & Ed Lazowska • Marc Droppert • Monica Drumme • Beth L. Dubey • Revelle Dunlop • Richard Dunn • Glenn & Bertha Eades • Betty Eberharter • Anne & David Echols • Marvin Eckfeldt • Bruce Eckfeldt & Lisa Dawson • Helene Ellenbogen & Wayne Parker • Debra & John Ely • Albert & Nancy Erisman • Katie Eskew • Carol & Michael Etgen • Constance Euerle • Kevin Wilson & Emily Evans • Darci & William Evidon • Jan Fairchild & Terry Pichart • Lorri Falterman • Sharon Farren • Larry & Suzanne Farwell • Thea & Alexander Fefer • Lyn & Paul Fenton • John & Mariley Ferens • Jed Fife

• Richard, Angela & Ian Finlay • Dennis & Lenita Firth • K. Denice Fischer-Fortier & James M. Fortier • Derick Fisher • Barbara V. Fithian • Cassie Martin • Corinne Fligner & Mark Wener • Albert & Thelma Franco • Theresa Francomacaro & Mark Amlin • Shirley Frank • William T. Frantz • Richard & Dorothy Fuhrman • Marcia Fujimoto • Jane & Richard Gallagher • Martin Gallagher • Teresa Gallo • Emma Garkavi & George Inverso • Roger & Kris Garratt • Marion & Stanley Gartler • Pam Gates & Cliff Solomon • Nancy Geiger • Janine Gelish • Zanne Gerrard • Louise Gerth • Catherine Gibson • Gary Gibson • Wilmot & Mary Gilland • Sara & Jay Glerum • Debra Godfrey & J. Sconyers • Mary Etta & Jan Goes • Joan & Steve Goldblatt • Albert & Della Gordon • Gail M. Gosselin • Allen & Carol Gown • Gray's Custom Painting • Charlotte Green • Michael J Greer • James & Rhonda Greer • Drs. Verena & Basil Grieco • Sue & Bernard Grieff • Susan Griffith • Nan Gruber • Dr. Alan L.W. Gunsul, M.D. • Joe & Nancy Guppy • Helen Gurvich • Jerry & Susan Haas • Stanley & Berthe Habib • Joanna Reeve • Harvey Hailer • Ken & Lynn Hall, Windows, Doors & More • Cal Hall • Spencer Hamlin • Ronald & Barbara Hammond • Martha W. Hanscom • Marcia Harper • Judy Wasserheit & Jeff & Ash Harris • John & Marilyn Harris • Richard & Carol Harruff • Patrick & Molly Hart • Shelley Hartnett • Sally & Robert Hasselback • Mary Beth Hasselquist • Lisa Haug & Amado Shuck • Kristina K Hauptfuehrer • Robert & Sally Hayman • Rodney & Jill Hearne • Nadine Heichel • Susan Helland • Rose Henderson • Arlene & Doug Hendrich • Paul Hensel • Jay Hereford & Margaret Winsor • Chris Higashi • Pat & Stu Highet • Roger Hitzeman • Mary & Roland Hjorth • Genie & Fred Hoffman • Jim & Sue Hogan • Brendan P. Hogan • Sara Holby • Allison Hollis • John Holt & Susan Trainor Holt • Greg Home • Ms. Karen Howard • Dr. & Mrs. John Howe • Rob Howell & Jackie Bardsley • Lynn Huff • Randall & Jane Hummer • Barbara & John Huston • Melissa Huther & Gordon Hof • Daniel Hutt • Donald Immerwahr • Mike Immerwahr • Julie Impett • Jonathan W. Ingram • Mike & Monnie Ironside • Wendy Jackson • John E. Jacobsen • Michael Dryfoos & Ilga Jansons • Bonnie Jardine • Reed & Denise Jarvis • Camille & David Jassny • Cathy Jeney • Christine Jew • Al & Sue John • Terry Anne Johnson & Joseph R. Maio • Julia & Eric Johnson • James Johnson • Marcia H. Johnson • Dr. & Mrs. Ted Johnsrude • Charmian Jondall & Sameul McCormick • H. David Kaplan • C.R. Kaplan • Kathleen Kealey • Rosemarie Keenan • Carolyn Keim & Connie Rinchiuso • Jeffrey D. Keith • Linda & Joe Kellar • John Kelleher • Michael & Vilma Kelly • Thomas & Mary Kelly • Rita Calabro & James Kelly • Lucinda Kelly • Rebecca & Tim Kenison • Jerry Kenney • Tim Kerr & Cynthia Wells • Margaret Kerrigan • Steven & Patricia Kessler • Eugene Kidder • Angela Kiser • Rachel Klevit • Jerret Sale • Brenda Koga • Allan & Mary Kollar • Armand Kornfeld • Kurt & Jill Kosty • Dan & Emily Kozie • Linda Krese • Gerald Kroon & Roxanne Shepherd • Jeff's Windows • Suzy & Lee Kueckelhan • Gary Epstein & Susan Kunimatsu • Maureen Kures • Laurie & Eric Kutter • Debra La Lande • Edie Lackland • Phyllis Lamphere • June Lane • Will & Chapple Langemack • Lynne Langseth • Elizabeth Knighton • Dr. Clarence Larry, O.D. • Inge Larsen • Paul & Jill Larson • Paul & Linda Larson • Theresa J. Leahy • Rae Deane Leatham & Gerry Lasser • Jessica Lee & James Pike • Shannyn & Chul Lee • Ed & Barbara Lee • Patricia Lein • James & Christy Leith • Eileen Lennon • Katey Lent • Rosemary Leong-Miller • Geoff Levy • Walter Lewis • Bonnie Lewman • Charlotte Lin • Kathleen & Jeffrey Lindenbaum • Martha Lindley • Hubert G. Locke • Del Loder • Karen & John Loeser • Hazel Lozano • Sylvia Lucas • Jerry Luiten • Gloria Luster • Meg & Jake Mahoney • Kelly Malone • Arnold & Rita Manning • Penni Maples • Helen K. Mark • Ian D. Marks & Margaret A. Marks • Jodi & Shea Marmion • Mr. & Mrs. David Marriott • Janice Marsters • Peter J Martin • William & Judith Matchett • David Mattson • The May Family • Michael & Rosemary Mayo • Sandra Mays • Fayne Loew • Stacy McCann • Catherine & Barry McConnell • Christopher McCool • Samuel McCormick • David & Karen McCullough • Carol McDonald • Bruce & Coco McDougall • Joanne McElroy • Kathleen McGill • Yvonne & Brian McGookin • Barbara & Peter McGrath • Elisa Mader & Andrew McIntosh • Herman & Norma McKinney • Jeff & Sue McLaughlin • Will & Karen McMahan • Chris McQuown • David Meckstroth • Tracy Mehlin • Brenda &

# ACT Circle of Donors

Thomas Melang • Catherine & Ravi Menon • Jeff Mero • Joel Metschke • The Meyer Family • Scott Mickelson & Barry North • Terry Miller • Jon Minnoch • Susan & Michael Mise • Mr. Don Mochel • Craig Montgomery & Steve Smith • Aaron Moore • Jennifer Moore & Andrew Sclofeldt • Malcolm & Phoebe Ann Moore • Susan Moran • Roger Morris • Kathryn & Dan Mortensen • Alvin & Janie Moser • Jim Mothersbaugh • Jonathan Munro • John & Faith Munson • Diane Murray • Robert Mustard • John Nadeau • Pam Nagel • Pradeep & Priya Narayan • John C. Narver • Marlene Nelson • Roland & Deanna Nelson • Eugene & Martha Nester • Paul & Linda Niebanck • Richard & Lila Nielsen • Marie Nisbet • Amy & Dan Nordstrom • Ina-Marie Novak • Ron & Nancy Novak • Carmen Nylund • Gary Ocher • Arlene Oglove • Maureen O'Hara • Patsy Oldham • Rick Olson • Kim O'Neal • Amelia & Elizabeth Osborn • Judith & Jay Donald Ostrow • Sharon & Katherine Oswalt • Michael Otani • Amanda Overly • Nancy Paquin • Ruth Ann Parish • Robin Pasquarella • Donald Paterson • Ed & Janet Pavlin • Bach Payson • Elizabeth Pelham • Shana Pennington-Baird • Earl Perdue • Jean Perrigo & Lisa Schuman • Edward & Carol Perrin • Chuck Perry • Jane Peterson • Karen Peterson • Kathleen Petrich • Greg & Peggy Petrie • Cheryl Phelps • Barbara Phillips • Lisa Phillips • Sylvia Pilgrim • Cynthia & Edward Pollan • Shannon Pool • Michael & Elizabeth Pray • Gloria Prevost • Marlene Price • Robin Prichard • Geoffrey Proehl • Megan & Greg Pursell • Amanda Quinn • Ira Quint • Matthew & Linda Radecki • Richard Radford • Daniel & Barbara Radin • CP Ramakrishnan • Cheryl Ramon • Ann Ramsay-Jenkins • Alan & Barbara Rappoport • Ben D. Rapson • Murray & Wendy Raskind • Vic & Louise Rasmussen • Brian & Roberta Reed • Steve & Denise Reibman • Cecilia Paul & Harry Reinert • Ann Rhees • Ryaire Richardson • Shawn Richardson • Robin Riedinger • Virginia & Thomas Riedinger • Ted & Teresa Rihn • Frances Ringold • Mary L. Robb • Nicholas & Yvonne Roberts • Connie Thompson & Don Roberts • Eve Roberts • Drs. Tom & Christine Robertson • Caryl Roman • Judy Soferman & Marc Rosenshein • Gregory Rubin • Ann & Ted Rupley • Richard & Nancy Rust • Pam Sagoian • Sajasa Construction, Inc • Jerry & Carolyn Samuelson • Ingrid Sarapuu & Michael Anderson • Julie Sargent • Francesca Sarpola • Mark Satterlee • Peggy Scales • Stuart & Amy Scarff • Joseph Schaeffer • Judy & Andy Scheerer • Estelle Scheetz • Kimberly Schmidt Eickerman • Betsy & Jason Schneider M.D. • Gerry & Gail Schneider • Joe & Judy Schocken • Jane Schoenleber • Andrew & Esther Schorr • Catherine Schroeder • Catherine Schrup • Gary & Judith Schwab • Steve Scott • Dr. Carol Scott-Kassner & Kirk Kassner • Dr. George & Claire Scranton • Brad Sealy • Roger & Marlys Seeman • Jack & Arlene Segal • Richard & Helen Seiler • Aaron Shanahan • Barbara & Steve Shaub • Bob Sheehan • Karen & Robert Sheppard • Philip Sherburne & Susan Casabona • Kathryn Shields • David Shipe • Peter Sill & Marcia Joslyn Sill • Goldie & Donald Silverman • Stacya & David Silverman • Alan & Sally Simmons • Hazel Singer • John Griffiths • Bill & Marilyn Skelly • Martie Skinner • John Skinner & Peggy O'Neill Skinner • Austin Smart • Paul Smith • Anthony Smith • Melodee Smith • Elvin Smith • Julie & Sam Smith • Randy Smith & Sharon Metcalf • Warren & Nancy Smith • Charles Smyth • Gregory L. Snider • Karen Soma • Carrie Sparlin • Linda Barker Spear • Mr. & Mrs. Mark Spencer-Coons • Thaddeus Spratlen & Lois Price • Robert Squires • William M. & Rosslyn Staab • Brigham Stevens • Marcia & Doug Stevenson • James Stoddard • Virginia Stout • Gordon C. Strand • Michael & Priscilla Strand • Gary & Becky Streitmatter • Tricia Stromberg • Cara Sugihara • Richard & Diane Sugimura • Jay & Betty Sullivan • Sally Sullivan • Kristen Summersby • Michael Sutherland • Linda & Paul Suzman • Constance Swank • Bob Swanson • Christine Sydneysmith • Alex & Lucy Sytman • Lauren H. Taft • Nina Tang • Robert & Denise Taylor • Ms. Sherry Taylor • Margaret Taylor • Jeanie, Walter, & Richard Teare • John & Elizabeth Terrey • Lynn Texter-Knapp • Diane Thiele • Catherine Thoma • Michael Thompson • Mark & Elaine Thompson • Anne Tiura • Judy Tobin & Michael Baker • Eric Todderud • Joan Toggenburger • Marianne Tomita • Arthur & Louise Torgerson • Cal & Linda Treger • Heidi & Brian Tucker • Susan Underwood • Eugene H. Usui • Marsha Valentine • Lisa & Norburt van Dam • Peter Van Der Meulen • Greg & Debarah

Vandenberg • Michael Scarey & Linda Vane • Dr. John & Callie Vassall • Yvonne & Bruno Voge • Allan & Sandy Voves • Huong Vu • James R. Waches II • Jorie Wackerman • Morris & Penny Wade • Annelise Wagner-Klein • Margaret Wallace • Ellen Wallach & Tom Darden • Sharyn & Moe Wallin • Elissa Walstead & Cory Wilker • Jane & Daniel Warner • V'ella Warren • Toby & Linda Warson • Jerry Watt & Vreni von Arx • Dr. Judson & Muriel Weaver • Jack & Elaine Webber • Joan Weber • Bruce Weech • John Weeks • Dennis & Lesley Weinberg • John & Sarah Weinberg • Lucy & Larry Weinberg • Susan Brandt • Dean & Lisè White • Ann Widditsch • Carol Wiesenbach • Sean Wilkins • Michelle Wilkinson • Jay & Linda Willenberg • Martha Williams • Catherine & Richard Wilson • Scott & Shirley Wilson • Daryl Wilson • Karen & Lee Wimberly • Michael Winters • Boots & Paul Winterstein • Sally Wold • Susan G. Wolfe • William Womack, MD • Vickie & Benjamin Woo • Ginny Woodhouse • Frank Woodruff & Jan Agosti • Kent & Carolyn Wright • Lenore Wyatt & Martin Kuhns • Karen Wylie • Diane & John Yokoyama • Vito Zingarelli • Anonymous (37)

## Gifts in Tribute

This list reflects gifts made to ACT in recognition of the following people:

In memory of Julie Anderson:  
Nancy Hevly, Harvey & Sylvia Menard

In memory of Stewart Ballinger:  
Virginia & Thomas Riedinger

In honor of Joan and Larry Barokas:  
Marcia Mayo, Norman & Eleanor Sadis

In memory of Thomas P. Bleakney:  
Brad & Linda Fowler

In memory of Mark Chamberlin:  
Phillis Hatfield, Carolyn Keim & Connie Rinchiuso, Anonymous

In honor of Richard Hesik and Barbara Johns:  
Anonymous

In memory of Melissa Hines:  
Brian Branagan & Carissa Sanchez, Tony Martello, Jeff Robbins & Marci Wing

In memory of Kurt Hitchman:  
Daniel Hutt

In memory of Stan Keen:  
Marion B. Keen, Wyman Youth Trust

In honor of Gloria Moses:  
Susan G. Kolb

In honor of Gian-Carlo and Eulalie Scandiuzzi:  
Kenneth & Marleen Alhadeff

In honor of Chuck Sitkin:  
Eric & Susan Benson

In memory of Mr. Walter "Walt" Walkinshaw:  
Jean Walkinshaw; Victoria Bennett; Ed & Betty Bottler; Tina Bullit; Meg & Michael Carrico; Mrs. Susan Claeys; Horizon House; The Lakeside School; Nadine & John Murray; A.M. & S. Putter; Katherine & Douglass Raff; Brooks & Suzanne Ragen; Riddell Williams, P.S.; Ms. Lyn Tangen & Mr. Richard Barbieri; Jeanie, Walter, and Richard Teare; Joan & Steve Waldo; Washington State Hospital Association; Ann P. Wyckoff; Anonymous

In memory of Scott Weldin:  
Jan Weldin

ACT would like to thank the following Corporations for their contributions through Gift Matching Programs. We greatly appreciate the support of these institutions and their employees.

Adobe Systems Inc, Matching Gift Program  
Alaskan Copper & Brass Company  
Amgen Foundation  
Bank of America Foundation  
Bentall Capital  
Bill & Melinda Gates Foundation  
The Boeing Company  
Carillon Point Account  
CBIC Insurance  
Chevron  
CIGNA Matching Gift Program  
Citibank, N.A./Citicorp  
Eli Lilly & Co. Foundation  
Google  
Harbor Properties, Inc.  
IBM International Foundation  
Key Foundation  
Merck  
Microsoft Corporation Matching  
The Prudential Foundation Matching Gifts  
Puget Sound Energy  
RealNetworks Foundation  
SAFECO Matching Funds  
Satori Software  
Sun Microsystems Foundation  
United Way of King County  
The UPS Foundation  
US Bancorp Foundation  
Verizon Foundation  
Washington Chain and Supply, Inc  
Washington Mutual Foundation Matching Gifts Program  
Zymogenetics Inc.

ACT works to maintain our list of donors as accurately as possible. We apologize for any misspellings or omissions. Should you find any, please contact our office so that we may correct any mistakes in future publications. Email or call Matthew Echert at [matthew.echert@acttheatre.org](mailto:matthew.echert@acttheatre.org) or 206.292.7660 x1331.



# ACT *A Theatre of New Ideas*

## ACT Board Of Trustees

Philip M. Condit  
*Chairman*

Brian Turner  
*President*

Elaine Spencer  
*Vice President, Fundraising Chair*

Chuck Sitkin  
*Vice President, Board Development Chair*

Daniel B. Hazzard  
*Vice President, Facilities Chair*

Paul Butzi  
*Treasurer, Finance Chair*

Colin Chapman  
*Secretary*

Brad Fowler  
*Past President*

Sheena Aebig  
Dan Alexander  
Joan D. Barokas  
Lance Becker  
Laurie P. Besteman  
Kyle Brnum  
Ron J. Cathcart  
Charles Fitzgerald  
Richard Hesik  
Stephanie Hilbert  
John E. Jacobsen II  
William J. Justen  
Bill Kuhn  
Petra Franklin Lahaie  
Lauren Mikov  
Kelly A. Miller  
Judy J Ness  
Dr. George Ojemann  
Alan J. Rappoport  
Ingrid Sarapuu  
Barry B. Scovel  
Sean Shanahan  
Rob G. Stewart  
Kristen J. Summersby  
Larry True  
Sita Vashee  
Chris K. Visser  
Clifford Webster  
Dr. Sheree Wen  
Scott F. Wilson  
Kyoko Matsumoto Wright

## ACT Advisory Council

Sheena R. Aebig  
Dr. Ellsworth C. Alvord, Jr.\*  
Aubrey Davis  
Daniel D. Ederer  
Jean Burch Falls  
Jeannie M. Falls  
John H. Faris  
Carolyn H. Grinstein  
Sara Comings Hoppin  
C. David Hughbanks  
Jonathan D. Klein  
Keith Larson\*  
Jane W. Lyons  
Louise J. McKinney  
Gloria A. Moses  
Nadine H. Murray  
Douglas E. Norberg  
Kristin G. Olson  
Donald B. Paterson  
Eric Pettigrew

Pamela Powers  
Katherine L. Raff  
Brooks G. Ragen  
Catherine Roach  
Jo Anne Rosen  
Sam Rubinstein\*  
David E. Skinner  
Walter Walkinshaw\*  
Dr. Robert Willkens\*  
George V. Willoughby  
David E. Wyman, Jr.  
Jane H. Yerkes

## Emeritus Council

Richard C. Clotfelter  
P. Cameron DeVore\*  
Esther Schoenfeld  
Marvel Stewart\*

## A Contemporary Theatre Foundation

Kermit Anderson  
*President*

Lucinda P. Richmond  
*Vice President*

Katherine L. Raff  
*Secretary*

Catherine Roach  
*Treasurer*

Philip M. Condit  
Brad Fowler  
John C. Siegler  
Brian Turner

\*In memoriam

## ACT Staff

Kurt Beattie  
*Artistic Director*

Gian-Carlo Scandiuizzi  
*Executive Director*

## Artistic

Margaret Layne  
*CASTING DIRECTOR & Artistic Associate*

Anita Montgomery  
*Literary Manager*

Nicole Boyer Cochran  
*Artistic Manager & Executive Assistant*

Valerie Curtis-Newton  
*Artistic Associate, The Hansberry Project*

Vivian Phillips  
*Producing Associate, The Hansberry Project*

Kristina Sutherland  
*Director of Education*

Sarah Winsor  
*Education Associate*

Kenna Kettrick  
*Literary Intern*

Katie Beudert  
*Casting Assistant*

## Administration

Adam Moomey  
*Operations Manager*

Shana Pennington-Baird  
*Events & Venue Manager*

Lyam White  
*Volunteer Coordinator*

Ulysses Cox  
Teddy Heard  
*Facilities Maintenance*

Dave Parmley  
*Engineer*

Responza Management Services  
*IT Administrators*

Ash Hyman  
*Administrative Coordinator*

## Finance

Mary D. Brown, CPA  
*Chief Financial Officer*

Michael Scheinine  
*Accountant*

Tobi Beauchamp-Loya  
*Payroll & Human Resources Manager*

## Communications

Becky Lathrop  
*Director of Marketing and Communications*

Sebastien Scandiuizzi  
*Video Manager*

Linas Phillips  
*Video Production Associate*

Angela Palmer  
*Group Sales & Community Relations Representative*

Maribeth Fletcher  
*Marketing Coordinator*

Clayton Weller  
*Marketing Intern*

Christy Choi  
*Marketing Intern*

Apex Media  
*Advertising*

Rice Public Relations, LLC  
*Media Relations*

Chris Bension  
*Photographic Services*

Kevin Jones Copywriting  
*Copywriter*

Christa Fleming  
*Graphic Design*

Xtremities Design  
*Graphic Design*

Lynch Resources  
*Telemarketing*

## Development

Josef Krebs  
*Development Director*

Jennessa West  
*Associate Director of Development*

Ben Derby  
*Major Gifts Manager & Board Liaison*

Matthew Echert  
*Annual Fund Manager*

John Osebold  
*Grant Writer*

Meaghan Halverson  
*Board & Development Coordinator*

Angela Palmer  
*Donor Relations Coordinator*

Zanne Gerrard  
*Board Intern*

Elizabeth Zeff  
*Development Intern*

## Audience Services

Harley D. Rees  
*Memberships & Audience Services Director*

Jessica Howard  
*Associate Director of Sales*

Robert Hankins  
*Memberships & Audience Services Manager*

Ryan Rowell  
*Tessitura Manager*

Joe Mangialardi  
*Ticket Office Supervisor*

Jim Moran  
*House Manager*

Jeremy Rupprecht  
*Assistant House Manager*

Javonna Arriaga  
Michelle Berweiler  
Paul Dumas

Meaghan Halverson  
Erin Hancock  
Scott Herman

Sidney Hunt  
Mike Jones

Aiden Karamanyan  
Kristi Krein

Niki Magill  
Juliette Oliver

Sarah Richardson  
Darryl Singleton

Bryan Sullivan  
Kyle Thompson

Cadi Weaver  
*Audience Services*

## Production

Joan Toggenburger  
*Producing Director*

Alyssa Byer  
*Central Heating Lab Production Manager*

Emily Cedergreen  
*Production Office Manager*

Skylar Hansen  
*Production Runner*

## Stage Management

Jeffrey K. Hanson  
*Production Stage Manager*

JR Welden  
Erin B. Zatloka  
*Stage Managers*

## Costume Departments

Carolyn Keim  
*Costume Director*

Connie Rinchiuso  
*Costume Shop Foreman*

Kim Dancy  
*First Hand & Lead Dresser*

Sally Mellis  
*Wardrobe Master*

Joyce Degenfelder  
*Wig Master*

## Scenic Departments

Steve Coulter  
*Technical Director*

Derek Baylor  
*Assistant Technical Director*

Austin Smart  
*Master Scenic Carpenter*

Sean Wilkins  
*Lead Scenic Carpenter*

Jeff Manzolli  
Amanda Quinn  
*Scenic Carpenters*

Mona Lang  
*Scenic Charge Artist*

Lisa Bellerio  
*Assistant Charge Artist*

Marne Cohen-Vance  
*Properties Master*

Ken Ewert  
*Master Properties Artisan*

Thomas Verdos  
*Lead Properties Artisan*

## Stage Operations

Nick Farwell  
*Stage Operations Supervisor*

James Nichols  
*Master Stage Carpenter*

Pam Mulkern  
*Master Electrician*

Max Langley  
*Master Sound Engineer*

Brendan Patrick Hogan  
*Staff Sound Designer*

Brad Howe  
*Events Technician*

## For This Production

Marta Olson  
Ed Kronenberger  
Ivy Ash  
Julia Trimarco  
Becky Foster  
*Stitchers*

Nicolette Vannais  
Kari LeFevre  
Giles Thompson  
*Properties Artisan*

Kevin Wilson  
Ruth Gilmore  
*Scenic Artists*

Jason Montgomery  
*Stage Carpenter*

Tommy Price  
Kevin Cuba  
Mike Sterkowicz  
*Scenic Carpenters*