

J
U
L

A
U
G

encore

arts programs



THEATRE



2006 SEASONS

THE PILLOWMAN

By Martin McDonagh

MISS WITHERSPOON

By Christopher Durang

**WINE IN THE
WILDERNESS**

By Alice Childress

mitzi's abortion

BY ELIZABETH HEFFRON

DIRECTED BY KURT BEATTIE

A NUMBER

By Caryl Churchill

THE UNDERPANTS

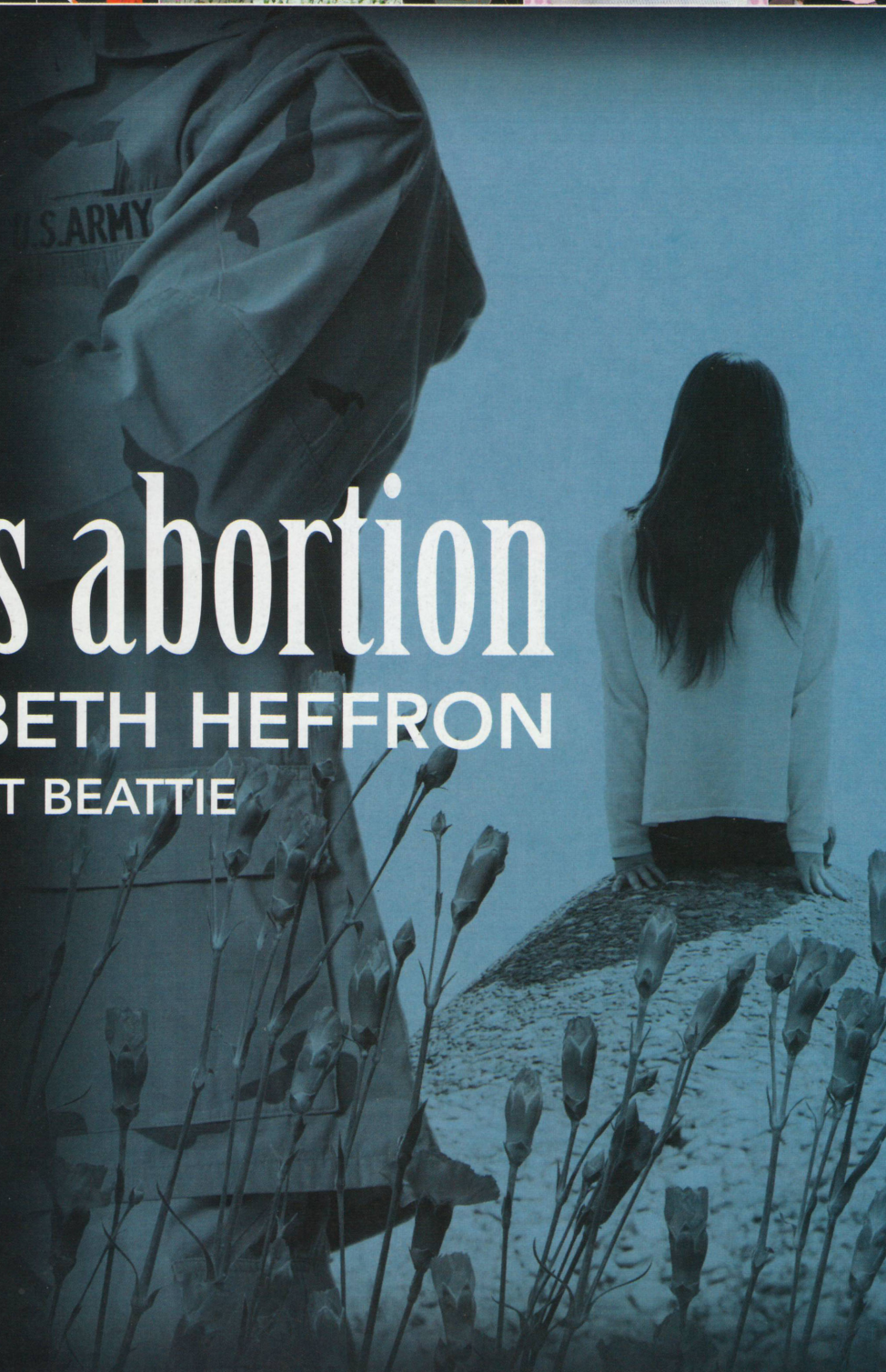
By Steve Martin

WAITING FOR GODOT

By Samuel Beckett

A CHRISTMAS CAROL

By Charles Dickens



Kurt Beattie
Artistic Director

Susan Trapnell
Managing Director

ACT Theatre presents

mitzi's abortion

BY ELIZABETH HEFFRON

DIRECTED BY KURT BEATTIE

July 21 - August 20, 2006

Opening Night
July 27, 2006



Seasonal support provided by ArtsFund.

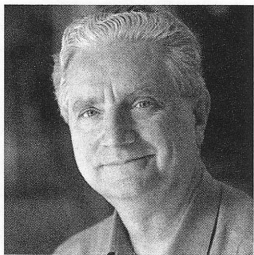


This is the world premiere of *Mitzi's Abortion*, which was originally commissioned by ACT Theatre for the 2003 FringeACT Festival of New Plays.

A large print version of the Program is available from the house staff.

ACT is a member of the League of Resident Theatres (LORT), the American Arts Alliance and Theatre Puget Sound, and is a constituent of Theatre Communications Group. ACT is also a member of the Downtown Seattle Association. This theatre operates under an agreement between LORT and Actors' Equity Association, the union of professional actors and stage managers in the United States. Directors and choreographers at ACT are members of the Society of Stage Directors and Choreographers, an independent national labor union. The scenic, costume, lighting and sound designers are represented by United Scenic Artists Local USA-829, IATSE.

WELCOME TO ACT



It is a great moment when any theatre can produce a world premiere. Bringing a new piece of art into the world, particularly a new play of such quality as *Mitzi's Abortion*, is one of the most positive things a theatre like ACT, dedicated to contemporary work, can accomplish. Only a small percentage of commissions find their way to full production in the American theatre, so ACT and its audiences are doubly blessed to be so fortunate with Elizabeth

Heffron's play. *Mitzi's Abortion* was commissioned by ACT in 2003 as part of the FringeACT Festival, then chosen by an independent panel for ACT's first New Play Award in 2005, and given a full two-week workshop generously supported by Carlo and Lalie Scandiuzzi. And finally, here we are, with a full production in ACT's 2006 season.

We live in a time riven with fear and dogmatic surety, in spite of the fact that when we look carefully at everything around us, a vast and often mysterious complexity becomes evident. *Mitzi's Abortion* magnificently investigates that complexity, while remaining a play about a young vulnerable woman, not an issue dressed up in human flesh. It honors the wonder and risk of being alive with intellectual clarity and heart, and we are extraordinarily excited to be able to bring it to you.

Kurt Beattie

Artistic Director

TABLE OF CONTENTS

A-1	Title Page
A-2	Welcome to ACT, Coming Next
A-3	The Company
A-4	Production Notes
A-6	Who's Who
A-8	ACT Donors
A-12	Board of Trustees, ACT Staff



COMING NEXT AT ACT!

SEPT 1 – OCT 1

A NUMBER

BY CARYL CHURCHILL

DIRECTED BY JOHN KAZANJIAN



"[Churchill] has transformed the theatre into what it needs to be: a gymnasium that exercises the imagination, shakes up the moral sense, and stretches the spirit."

BENEDICT NIGHTINGALE, LONDON TIMES

NEXT!

OCT 13 – NOV 12

the UNDERPANTS

BY STEVE MARTIN

DIRECTED BY KURT BEATTIE

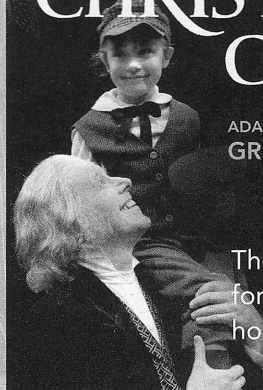


A wild and crazy kind of farce

NOV 24 – DEC 24

CHARLES DICKENS' A CHRISTMAS CAROL

ADAPTED BY GREGORY A. FALLS



The 31st year for your favorite holiday tradition!

206.292.7676 | acttheatre.org

THE COMPANY

CAST

(in alphabetical order)

Eric Ray Anderson	Thomas Aquinas/Tim/Geneticist
Sean Cook	Chuck/The Expert/Sergei
Kit Harris	Vera
Leslie Law	Reckless Mary/Sheila Luffington
Sharia Pierce	Mitzi
Shelley Reynolds	Nita/Nurse
Richard Ziman	Rudolfo/Dr. Block/Uncle Tub

PRODUCTION TEAM

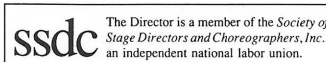
Kurt Beattie	Director
Narelle Sissons	Scenic Designer
Sarah Nash Gates	Costume Designer
Chris Reay	Lighting Designer
Dominic CodyKramers	Sound Designer
JR Welden	Stage Manager
Nora Menkin	Assistant Stage Manager
L.B. Morse	Media and Lighting Design Assistant
Alyssa Keene	Dialect Coach

There will be no intermission.

The Actors and Stage Managers employed in this production are members of Actors' Equity Association, the Union of Professional Actors and Stage Managers in the United States.

Audience members are cordially reminded to silence all electronic devices such as cell phones, watch alarms, and pagers prior to the performance.
All forms of photography and the use of recording devices are strictly prohibited.
Please do not walk on the stage before, during or after the show.

ACT operates under agreements with the following:



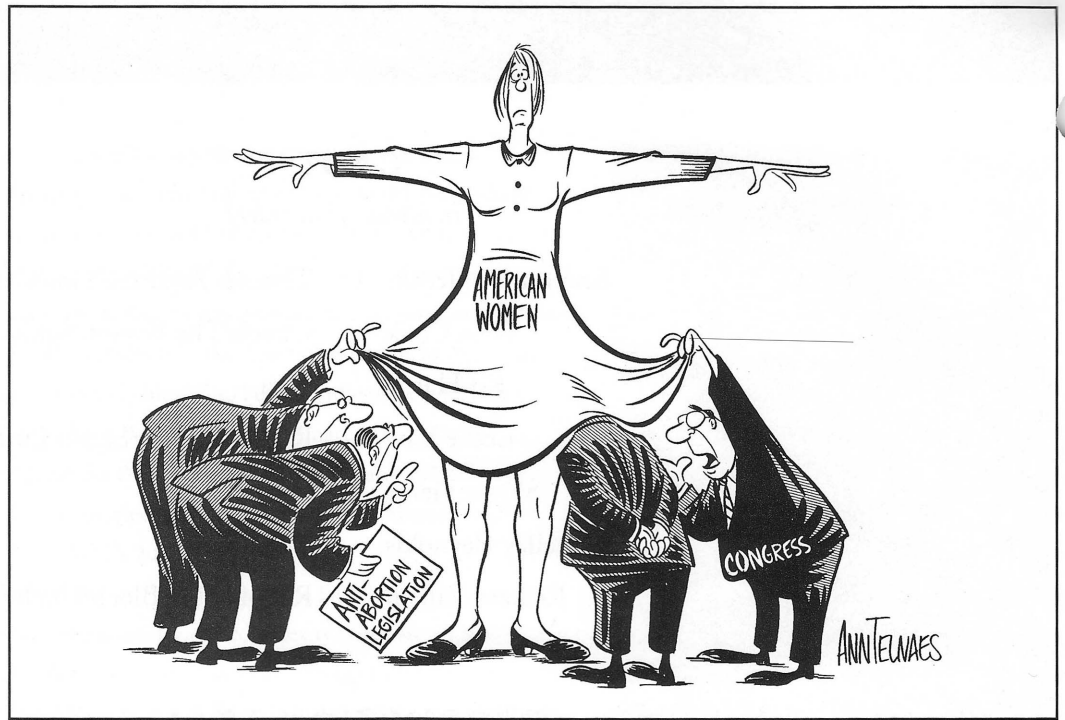
FROM THE PLAYWRIGHT

The main reason I use the word “abortion” in my title is because I want to be able to say it out loud to myself and not wait for a pipe bomb in my mailbox. It’s become a demon word that can shut down a conversation in a matter of seconds. This is occurring at a time when an ever-expanding variety of medical advances are requiring women to make decisions in pregnancy that seemed unfathomable just a generation ago.

Our extreme polarization on this topic is a fairly recent development. Up to the mid-1800s, before states began outlawing abortion, abortifacients were advertised in magazines, and young women felt comfortable enough about the subject to write home with news of “block menses” and how they got it started again. In the 1960s, with abortion completely illegal in most states, women staged “Abortion Speak Outs” and talked candidly about their ordeals. And in 1973, the character of Maude, on her prime time television show, underwent an abortion as part of the story line. Can you imagine a major network character making that choice today?

Grief counselors say that if you can’t name an experience, you will have a very hard time reaching closure around it. Even on a sitcom, Maude was able to openly come to terms with her experience. I think the almost 50% of U.S. women who have had some form of abortion experience should be able to get there, too.

Elizabeth Heffron



Between 1.52 and 1.6 million abortions (or 25 percent of the 6 million annual pregnancies) are performed in the United States every year. Although the absolute number and rate of abortions among young women aged fifteen to forty-four declined somewhat in the 1990s, by 1996 almost half of all women in that age group in the United States had had at least one abortion.

Unspeakable Losses: Understanding the Experience of Pregnancy Loss, Miscarriage, and Abortion,
by Kim Kluger-Bell

In our haste to make generalizations about the experience of abortion for use as political ammunition, we forget that the experience itself, like any life experience, is neither black nor white: neither wholly positive nor completely negative. Every abortion, like every pregnancy, has an individual context and a particular, personal meaning. Until we appreciate the individual life and the context in which the decision was made, we cannot fairly judge the morality of the decision. And until those who choose abortion are free to uncover its psychological significance (without fear of condemnation from either side of the political debate), it will continue to be very difficult for them to come fully to terms with the emotional repercussions of their choices.

Unspeakable Losses: Understanding the Experience of Pregnancy Loss, Miscarriage, and Abortion,
by Kim Kluger-Bell

Among the Rif tribes of Northern Africa abortion is a very serious offence. If a husband were certain that his wife had had one he would, at least, divorce her; and he might kill her, with the approval of his friends. Does this mean that abortion does not happen among the Rifs? Not at all! In addition to the general market, the women

have a market place of their own to which men are forbidden to come. The women’s market specializes in the needs of women, including contraceptives and abortions. In other words, the intolerable laws promulgated by men in this society are tolerated simply because women live in a different culture—or more exactly, subculture. The Rif situation shows this up particularly well; but, once seen, the same arrangement can be recognized all over the world. In Europe, for many centuries, the specifically female needs of women were taken care of by other women—mothers, mothers-in-law, grandmothers, and midwives (female). Abortions were performed by midwives, with husbands generally left out of the confidence. The separation of the two subcultures permitted an oceanic separation of theory and practice.

Stalking the Wild Taboo, by Garrett Hardin

Debates about sexuality and reproduction are always influenced by certain cultural assumptions. These usually involve attitudes toward women and sex. A culture that looks on women, like Pandora and Eve, as sources of evil is going to have trouble justifying having sex with them; it may conclude that only reproduction can justify sexual collusion with women. That is exactly what happened in Christianity. Augustine said that if it were not for reproduction there would be no use for women at all. In his words, “in any other task a man would be better helped by another man.” Early attitudes toward women were poisonous. The Mosaic law assumed male ownership of women. Early church writers said women lacked reason and only possessed the image of God through their connection to men.

Sacred Choices: The Right to Contraception and Abortion in Ten World Religions,
by Daniel C. Maguire

ABORTION: THE DEBATE

PRO-LIFE

One of the darker consequences of the current

effort to map the human genome will be withering pressure to test unborn children for genetic predispositions to certain “disabilities.” And why should we stop at Trisomy 21 and spina bifida? If, for instance, as is argued by homosexual advocacy groups, there is a genetic component to homosexuality, how many parents will want their babies tested for the operative gene? In China and India, fetuses are already aborted for the defect of being female. And a recent study determined that more than one in ten mothers would abort a child susceptible to obesity.

Wave of the Future? by Gregg L. Cunningham

Human life begins at the instant of fertilization/conception.

The willful taking of innocent human life by any means constitutes homicide and is a great moral and social evil. Society must not sanction the taking of any single human life or else all human life will thereby be devalued.

What the Holocaust and Abortion Have in Common,
by William Brennan

Abortion doesn't “liberate” women—it “liberates” men.

Abortion on demand liberates men who want sex without strings, promises, responsibility, or the rituals of romance. And if the woman has the baby? Hey, that's her problem. She could have gotten an abortion—she chose to carry the child; let her pay for her choice.

What Is a Pro-Life Feminist? by Carolyn C. Garago

Dominant societies have traditionally been selfish in the way they

grant personhood. Ours is no exception. When a vulnerable group gets in our way or has something we want, we tend to define personhood in terms which exclude them. Indians got in the way of Westward settlement, so we said they were subhuman to justify taking their land. We wanted the uncompensated work product of blacks so we said they were subhuman to justify taking their freedom. Unborn children have gotten in the way of our “liberation” so we say they are subhuman to justify taking their lives.

Why Abortion Is Genocide, by Gregg Cunningham

Hartsucker's view of how a homunculus ought to look in the sperm. From *Essai de dioptrique*, 1694.

PRO-CHOICE

The question “how can we justify an abortion?”

plainly leads to great difficulties. It is operationally unmanageable: it leads to inconsistencies in practice and inequities by any moral standard. All these can be completely avoided if we ask the right question, namely: “how can we justify compulsory pregnancy?”

Stalking the Wild Taboo, by Garrett Hardin

Abortion is not condemned because it involves

questions of life or death. Many states have permitted infanticide, many still sanction execution, and all are willing to see people kill and be killed in wars. If destruction of a living being does not deter states from war, why should destruction of an embryo be a serious matter? Moreover, groups opposed to legal abortion are generally unwilling to provide living children with the means to stay alive.

Treason, Abortion, and a Woman's Rights, by Marilyn French

The right to life movement has done our society a service by

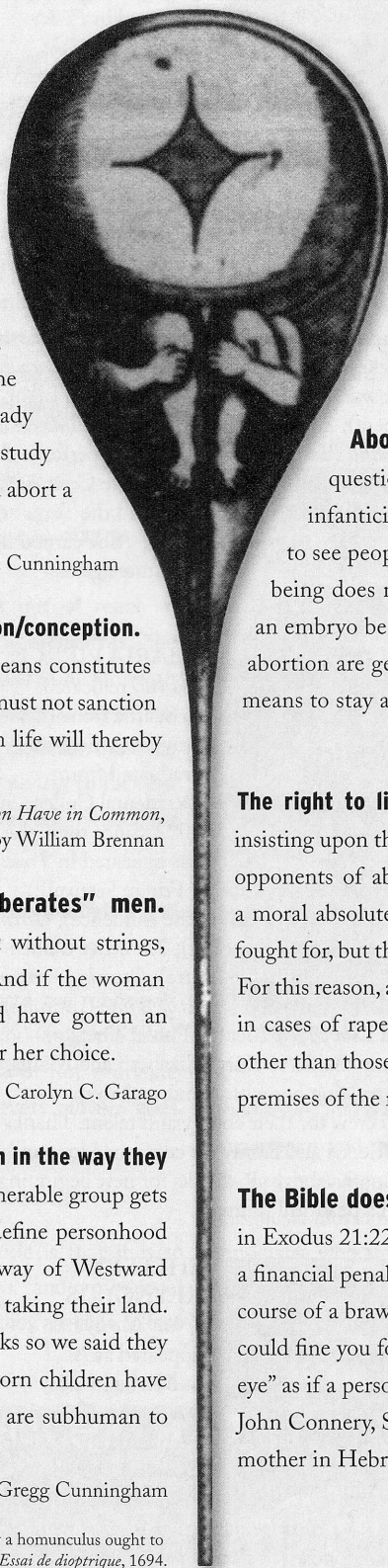
insisting upon the humanity and moral worth of the unborn child. But opponents of abortion have turned a legitimate moral concern into a moral absolute. They have made biological life not one good to be fought for, but the only good, to which all others must be subordinated. For this reason, anti-abortion activists insist that abortion be forbidden in cases of rape, or incest: to suggest there are moral considerations other than those of the life of the fetus is to question the fundamental premises of the right to life movement.

The Conservative Case for Abortion, by Jerry Z. Muller

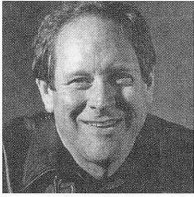
The Bible does not condemn abortion. The closest it gets is

in Exodus 21:22, which speaks of accidental abortion. This imposes a financial penalty on a man who caused a woman to miscarry “in the course of a brawl.” The issue here is the father's right to progeny; he could fine you for the misdeed, but he could not claim “an eye for an eye” as if a person had been killed. Thus, as conservative theologian John Connery, S.J., said, “the fetus did not have the same status as the mother in Hebrew Law.”

Sacred Choices: The Right to Contraception and Abortion in Ten World Religions, by Daniel C. Maguire



WHO'S WHO



ERIC RAY ANDERSON

(*Thomas Aquinas/Tim/Geneticist*) was last seen at ACT as Bob Cratchit in *A Christmas Carol* for the third year in a row. Most

recently, he appeared as Charlie the Mailman in *On Golden Pond* (Village Theatre), and Gus Trenor in *The House of Mirth* (Book-It). Other credits include *Sideman*, *The Voice of the Prairie*, *Red Noses* (ACT); *As You Like It* (Seattle Shakespeare Co.); *Misalliance* (Seattle Rep); and *The Shakespeare Stealer* (Seattle Children's Theatre). He has performed at Empty Space, Intiman, Arizona Theatre Company, Huntington Theatre and Tacoma Actors Guild, among others. Film credits include *Joyful Partaking*, *Money Buys Happiness*, and the Big Bad Wolf in S.J. Chiro's *Little Red Riding Hood*.



SEAN COOK

(*Chuck/The Expert/Sergei*) returns to ACT after his debut in this year's Young Playwrights Festival. Sean most recently appeared as Actor 11 in

God's Country at CHAC. He has been active with Seattle Dramatists, Seattle Rep, Women Playwrights Festival, CHAC Reading Series, Taproot Theater and 14/48 Theater Festival. You can rent Sean at your local video shop in the feature film, *The Choke*, if you enjoy b-horror movies. By his peers in *God's Country*, Sean was given the "most likely to hit on a female audience member while wielding a hammer" award. He declines to comment.



KIT HARRIS

(*Vera*) has lived and worked in the Seattle area as an actor for the past 25 years. She has appeared in three seasons of ACT's *A Christmas*

Carol. After performing in a staged reading of *Mitzi's Abortion* last year, she is thrilled to be back delving into the full production of this meaty piece. Kit has performed at many Seattle theatre venues, such as Cabaret de Paris, Seattle Children's Theatre, Empty Space, Theatre Off Jackson, Seattle Rep and Tacoma Actors Guild. Her many voices have been heard on the radio airwaves, or as you've taken her on as the heroine or arch enemy

in a computer game. She also has her own landscape design business.



LESLIE LAW

(*Reckless Mary/Sheila Luffington*) has appeared in *Fuddy Meers*, *Polish Joke*, *Man of the Moment*, *The Cover of Life*, *The Revenger's Comedies*,

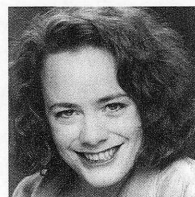
A Christmas Carol (ACT); *Sweeney Todd*, *The Sound of Music* (5th Avenue); *Living Out*, *As You Like It* (Seattle Rep); *Junie B. Jones*, *Charlotte's Web*, *Animal Farm*, *A Year with Frog and Toad* (SCT); *Brigadoon*, *After the Fair* (Village Theatre); *Crimes of the Heart* (Tacoma Actors Guild); *Julius Caesar* (Seattle Shakespeare Co.); *Grendel* (Book-It); *Carousel*, *Me and My Girl*, *Into the Woods* (Civic Light Opera); *Zastrozzi* (AHA!); and *The Imaginary Invalid* (Bathhouse). She has also performed at Missouri Rep, Arizona Theatre Company, Childsplay, Inc., Idaho Rep, and the Texas and Virginia Shakespeare Festivals. She earned her MFA at the UW under the tutelage of Jack Clay.



SHARIA PIERCE

(*Mitzi*) relocated to Seattle from Los Angeles, where she graduated from Occidental College, in 2002. Since then, she has appeared in *Trestle*

at *Popelick Creek* (Seattle Fringe Festival); *Blasted* (Theater Under the Influence); *Getting Out* (Theater Schmeater); *The Secret Garden* (Seattle Children's Theatre); *Courting Vampires* (Seattle Rep); *The Grapes of Wrath* (Intiman); and *Lobby Hero* (Seattle Public Theater). Many thanks to Kurt, Elizabeth and Margaret for trusting her with *Mitzi*, and to the cast and crew for their energy and talent. Thanks to friends and family for continued love and support. Above all, thanks for new beginnings and a beautiful future.

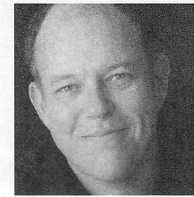


SHELLEY REYNOLDS

(*Nita/Nurse*) has appeared at ACT as Masha in *The Notebook of Trigorin* and Stephanie in *The Big Slam*. She was honored

with the 1997 *Backstage West* Garland Award for her performances. Other Seattle credits include Helen in *Design for Living* (Seattle

Rep); Hannah in *Warrior* (Intiman); Cathy in *Wuthering Heights! The Musical*, Sharla in *Killer Joe* (Empty Space); *Saint Joan* (Greek Active); *Hedda Gabler* (Triad Ensemble); and Angie Rage in *PileDriver!* (Bald Face Lie). At Swine Palace Theatre in her native Louisiana, Shelley appeared as Gloria Duplex and Columbia in *The Rocky Horror Show*. She is the proud recipient of the Glen Mazen Award for her work as stage manager of the 14/48 Festival.



RICHARD ZIMAN

(*Rudolfo/Dr. Block/Uncle Tub*) has appeared at ACT in *Born Yesterday*, *Polish Joke*, *Grand Magic* and *A Christmas Carol*.

Recent credits include

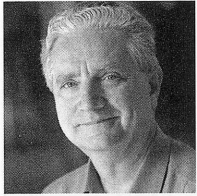
Rounding Third (Intiman) and *Richard III* (Seattle Shakespeare Co.). He has performed on Broadway in *Henry IV*, *Not About Nightingales*, *Laughter on the 23rd Floor*, *Epic Proportions*, *Lost in Yonkers* and *Biloxi Blues*, and off-Broadway in *Kit Marlowe*, *Twelfth Night*, *Julius Caesar*, *The Two Gentlemen of Verona*, *The Normal Heart*, *How It All Began*, *Polish Joke*, *The Resistible Rise of Arturo Ui*, *Danton's Death*, *Misconceptions* and *Tulsa* (Dramalogue Award). He has appeared at the Shakespeare Theatre (DC), Hartford Stage, Alley Theatre, Wilma Theatre, Huntington Theatre, Dallas Theatre Center (Rabin Award for *Twelfth Night*), Actors Theatre of Louisville, Long Wharf and the National Theatre (UK). Film and TV credits include *Unholy*, *Private Parts*, *Clockers*, *Hackers*, *Third Watch*, *The Sopranos*, and *Law & Order*. Richard is a native of Manhattan and a graduate of Juilliard.

ELIZABETH HEFFRON

(*Playwright*) Elizabeth's plays include *Mitzi's Abortion*, which won the 2005 ACT New Play Award, and *New Patagonia*, produced by Seattle Rep and selected for the Alternative Reading Series at Cherry Lane Theatre (NY). Her work has also been seen locally at Annex Theatre, 14/48, New City Theatre, and Freehold Theatre, where she's finished a second season working with Robin Lynn Smith and the inmates of the Washington Correctional Center for Women. Elizabeth has written three musicals for One Reel Productions, including *Icicle Times*, which featured 250 performers, two chickens and a horse, and spawned the *Icicle Times Radio Hour*. Her other plays and solo performance pieces include *An Altered Life*, *The Main Room*, *Babies*, *Broads*, and *Bread*,

WHO'S WHO

Moses Lake and *Morphometrics*, and have been staged in Seattle, Vancouver BC, San Francisco, St. Louis and New York. She teaches playwriting in schools through ACT's Young Playwrights Program, and is the recipient of several grants from the Seattle Arts Commission, as well as a Playwriting Fellowship from Artist Trust and the Washington State Arts Commission. Elizabeth is a principal playwright at Seattle Dramatists, and a member of the Dramatists Guild.



KURT BEATTIE (*Director/Artistic Director*) has been Artistic Director at ACT since 2003. His directing credits here include *The Pillowman*, *Vincent in Brixton*,

Bach at Leipzig, *A Christmas Carol*, *Black Coffee*, *Alki*, *A Moon for the Misbegotten*, *Fuddy Meers* and *Fully Committed*, as well as *Via Dolorosa* during ACT's 2000 Bullitt season. Elsewhere he has directed *Things Being What They Are*, *Art* and *True West* at Seattle Rep, as well as productions at Empty Space, Intiman, University of Washington, Milwaukee Rep and the Alley Theatre in Houston. He has served as a dramaturg and director at Ojai New Play Festival, the New Works Festival at Mark Taper Forum, and South Coast Rep's Pacific Playwrights Festival. He recently performed and directed a reading of his play about William Butler Yeats, *Fifteen Apparitions*, at Hugo House.

NARELLE SISSONS (*Scenic Designer*) has designed *Sideman* and *Grand Magic* at ACT. New York credits include *All My Sons* (Roundabout); *How I Learned to Drive* (Century Center); *Stop Kiss*, *In the Blood*, *Kit Marlowe*, *Julius Caesar* (Public Theater/NYSF); *Jesus Hopped the A Train* (Center Stage); *Our Lady of 121st Street* (LAByrinth, dir. Philip Seymour Hoffman); *Mabou Mines DollHouse* (St. Ann's Warehouse, Spoleto Festival, European tour); *The Winter's Tale*, *Iphigenia and Other Daughters*, *Entertaining Mr. Sloane* (Drama Desk nomination), *The Misanthrope* with Uma Thurman (American Theatre Wing nomination), *Therese Raquin* (Classic Stage Co.); and *Dedication* starring Nathan Lane (Primary Stages). In Europe, she has designed *Jesus Hopped the A Train* (London), and *The Syringa Tree* (Austria and Germany). Regional credits include *As You Like It* with Gwyneth Paltrow (Williamstown Theatre Festival), as well as designs for Mark Taper Forum, Steppenwolf, Dallas Theatre

Center, Trinity Rep and Repertory Theatre of St. Louis.

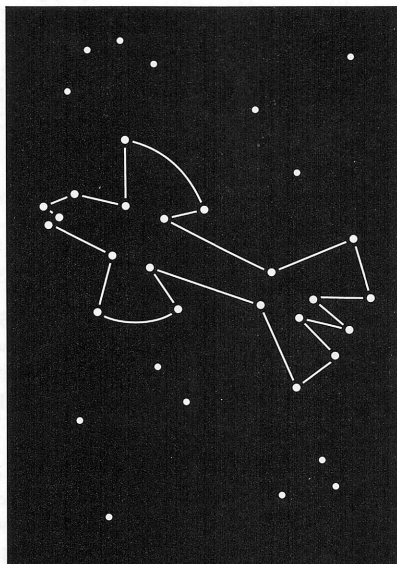
SARAH NASH GATES (*Costume Designer*) is happy to return to ACT, where her previous designs include *Amadeus*, *Tea* and *My One Good Nerve*. Her designs have been seen at Oregon Shakespeare Festival, Denver Center, Wolf Trap Farm Park, Seattle Opera, Intiman, Seattle Children's Theatre, Seattle Rep and Ringling Bros. and Barnum & Bailey, among others. Her work was included in the 1987 and 1991 gold medal-winning U.S. exhibits at the Prague Quadriennial. Sarah was the first woman to be President of the U.S. Institute for Theatre Technology. She helped to found Theatre Puget Sound and is currently Executive Director of the University of Washington School of Drama.

CHRIS REAY (*Lighting Designer*) has designed *Flight* and *Black Coffee* at ACT. Other credits include *Game of Love and Chance*, *Don Juan*, *Metamorphoses*, *The Odyssey*, *Jitney*, *King Hedley II*, *The Real Life*, *Proof*, *Obon*, *The Secret in the Wings*, *When Grace Comes In*, *Boy Gets Girl* (Seattle Rep); *Ubu Roi* and *Biro* (Empty Space); *Juicy Point B* (Maureen Whiting Dance Co.); *The Red Room* (Hugo House); *Mag Mor*, *Monster* (Theater Schmeater); and *Florenzia in the Amazons* (Seattle Opera). He has worked as associate lighting designer at McCarter Theatre, Berkeley Rep, Seattle Opera, New York City Opera, New York City Ballet, Santa Fe Opera, Portland Opera and Houston Grand Opera. He currently serves as lighting director for Santa Fe Opera, and teaches lighting design at Cornish.


DOMINIC CODYKRAMERS (*Sound Designer*) is proud to be in his 7th season at ACT, where he most recently designed *Wine in the Wilderness* and *The Pillowman*. Other notable work includes *Flight*, *The Woman in Black*, *Jumpers*, *Alki*, *Polish Joke*, *Monster*, *In the Penal Colony* and *Communicating Doors*. His sound designs have also been heard at Seattle Rep, most recently in August Wilson's *Radio Golf*, and for the Flying Karamazov Brothers, Universal Studios Hollywood, Pasadena Playhouse, PCPA Theatrefest, Oregon Cabaret Theatre and Santa Clarita Rep. He teaches theatre sound at University of Washington, and is a graduate of California Institute of the Arts and UNC-Asheville. Dominic is a member of United Scenic Artists 829, IATSE Local 15 and is a recipient of USITT's Sound Achievement Award. Good vibes always to Dayna and the furry girls.

JR WELDEN (*Stage Manager*) most recently stage managed *Miss Witherspoon* at ACT. For the past ten seasons, he stage managed at Intiman on many productions, including *The Grapes of Wrath*, *The Mystery of Irma Vep*, *The Dying Gaul*, *The Servant of Two Masters*, *A Raisin in the Sun*, *The Chairs*, *Crumbs from the Table of Joy*, *The Last Night of Ballyhoo*, *Full Gallop*, and *The Mandrake Root* with Lynn Redgrave. At Seattle Rep, his credits include *The Chosen*, *Stop Kiss*, *Things Being What They Are*, *The Beard of Avon*, *Game of Love and Chance*, *Golden Child*, *Design for Living* and *Pygmalion*.

NORA MENKIN (*Assistant Stage Manager*) is thrilled to be back at ACT, where last season she was the production assistant on *Born Yesterday*, *Vincent in Brixton* and *A Christmas Carol*. Around town, Nora has also worked on *Honus & Me*, *The Magic City* (Seattle Children's Theatre); *The Mystery of Irma Vep*, *The Play's the Thing*, *Blue/Orange* (Intiman); *The Chosen* and *The O'Connor Girls* (Seattle Rep).



Late Night Fish.

Lunch Monday - Friday	
Dinner Until 1:00 AM Every Night	
Bar Open Until 2:00 AM First & Bell 206-728-8595	FISH

WHO'S WHO



SUSAN TRAPNELL
(Managing Director)
was appointed
Managing Director
in April of 2003.
She served in the
same position from
1982-2000. In

the intervening three years, Susan spent two years as Executive Director of the Seattle Arts Commission (now the Office of Arts & Cultural Affairs) and a year as Managing Director of the Guthrie Theater in Minneapolis. She is delighted to be back in Seattle and back at ACT. Susan holds a BA in French from the University of North Carolina, and has lived in Lyons, France;

Guelma, Algeria; and Vienna, Austria. She moved to Seattle in 1976 to work with the Bill Evans Dance Company, first as Director of Education and then as Managing Director. She has served as President of the Washington State Arts Alliance, Vice Chair of the King County Arts Commission, and on the Board of the Downtown Seattle Association. She currently serves as a member of the Board of Directors of Theatre Communications Group, the Advisory Board of Arts Space, the Board of Town Hall, and is a Trustee of the Kreielsheimer Remainder Trust. Susan was the co-recipient (with Kurt Beattie) of the 2004 Theatre Puget Sound Gregory A. Falls Sustained Achievement Award.

INSTITUTIONAL CONTRIBUTORS

FOUNDATION & GOVERNMENT SUPPORT

\$50,000+

The Paul G. Allen Family Foundation
PONCHO
The Shubert Foundation, Inc.

\$25,000 - \$49,999

Kreielsheimer Remainder Foundation
Mayor's Office of Arts & Cultural Affairs
National Endowment for the Arts
Nesholm Family Foundation
The Seattle Foundation

\$10,000 - \$24,999

4Culture
A Contemporary Theatre Foundation
The Clowes Fund
Harvest Foundation
Washington State Arts Commission

\$5,000 - \$9,999

Norman Archibald Charitable Foundation
Hamilton Family Foundation
Horizons Foundation
Medtronic Foundation
Satterberg Foundation
Peg & Rick Young Foundation

\$1,000 - \$4,999

The E. K. & Lillian F. Bishop Foundation
Dramatists Guild Fund, Inc.

Fales Foundation Trust
Marsha & Jay Glazer Foundation
The Picsha Foundation

CORPORATE & IN-KIND SUPPORT

\$100,000+

ArtsFund
\$50,000 - \$99,999
The Boeing Company
Continental Airlines
Microsoft Corporation

\$25,000 - \$49,999

ShadowCatcher Entertainment

\$10,000 - \$24,999

Getty Images
\$5,000 - \$9,999
The Commerce Bank of Washington
Harbor Properties, Inc.
KUOW 94.9 Public Radio
Milliman
Perkins Coie
Quellos Group, LLC
Ray's Boathouse Banquets & Catering

\$2,500 - \$4,999

Catering by McCormick & Schmick's
Columbia Crest Winery
Dorsey & Whitney LLP
Expedia, Inc.
Laird, Norton Trust Co.
Lisa Dupar Catering

Moby's Restaurant
Paramount Hotel
Williams, Kastner & Gibbs PLLC

\$1,000 - \$2,499

Alaskan Copper Works
ArtsFund/Wells Fargo Cultural Education Enhancement Fund
Bambuza Vietnamese Bistro
Impromptu Wine Bar Café
Kaspar's Events & Catering
Northern Trust Bank
Pacific Place
R. David Adams Flowers
Riddell Williams, PS
Seattle Homes & Lifestyles Magazine
Wright Runstad & Co.

\$100 - \$999

Adobe Systems, Inc.
Alaska Distributors
Amgen Foundation
Bank of America Foundation
Bergevin Lane Vineyards
Beverage Bistro
Coca-Cola
Dilettante Chocolates
Hedges Cellars
The Islander Restaurant
Joanie's Catering
New York Life Insurance
Red Lion Hotel on Fifth Avenue
Safeco
Tony's Events & Catering, Inc.
UBS Foundation USA
US Bank
Yakima Cellars

ONGOING SUPPORT



THE PAUL G. ALLEN
FAMILY foundation



A Contemporary Theatre
Foundation



gettyimages

Microsoft®



The Nesholm
Family Foundation



The Shubert
Foundation Inc.



SPECIAL THANKS

ACT gratefully acknowledges the following for their contributions to this production and season:

Beverage Bistro of Redmond	KEXP 90.3 FM
Columbia Crest Winery	KING FM 98.1
Elliott Bay Book Co.	Moby's Restaurant
Impromptu Wine Bar Café-Madison Park	Mona's Bistro & Lounge
Daniel Keane, Market Place Salon-Burien	Ray's Boathouse Banquets & Catering
	<i>The Stranger</i>

I am deeply indebted to the following people, and groups, for the development of this play, and for my growth as a theatre worker: Kurt Beattie, Anita Montgomery, Susan Trapnell, and the staff and board of ACT Theatre; Gian-Carlo and Eulalie Scanduzzi; Robin Lynn Smith and Freehold Theatre Lab Studio; Becky Hellyer, Linda Breneman, and the playwrights at Seattle Dramatists; Bret Fetzer and the company at Annex Theatre; Shawn Belyea and the Steering Committee at 14/48; my husband, Matt Smith, my two amazing daughters, and my entire extended family; Phil and Sam Herring; and all the actors who have inhabited these characters with such vigor. -Elizabeth Heffron

ACT CIRCLE OF DONORS

ACT would like to recognize and thank all of the individuals who have made contributions to ACT's Annual Producing Fund. Members of the ACT Circle are invaluable in the success of our mission, ensuring a nurturing environment for the celebration and development of contemporary theatre. Without the generous support of ACT Circle members, none of this would be possible.

This list reflects members of the ACT Circle of Donors as of June 9, 2006.

DIAMOND BENEFACTORS

\$100,000 and above

Buster & Nancy Alvord
Philip Condit & Geda Maso Condit
Katharyn Alvord Gerlich

PLATINUM BENEFACTORS

\$50,000 - \$99,999

1 Anonymous

GOLD BENEFACTORS

\$25,000 - \$49,999

Becky & Jack Benaroya
Sam & Gladys Rubinstein
Gian-Carlo & Eulalie Scanduzzi
1 Anonymous

SILVER BENEFACTORS

\$10,000 - \$24,999

Richard & Nancy Alvord
Mrs. Frederick Ayer
Laurie Besteman & Jack Lauderbaugh
Jerry Dark & Monty Collins
Jean Burch Falls
Linda & Brad Fowler
Ellen & William Hazzard
Katherine Ann Janeway & H.S. Wright III
Debbie & Jonathan Klein
Gloria & David Moses
Douglas & Nancy Norberg
Katherine & Douglass Raff
John Siegler & Alexandra Read
David & Joyce Veterane

GRAND BENEFACTORS

\$7,500 - \$9,999

Sheena Aebig & Eric Taylor
Daniel D. Ederer & Takayo Minakami

PREMIER BENEFACTORS

\$5,000 - \$7,499

Allan & Anne Affleck
Chap & Eve Alvord
Joan & Larry Barokas
Sonya & Tom Campion
Betsy & Charles Fitzgerald
McKibben/Merner Family Foundation
Nadine & John Murray
Carrie D. Rhodes
Jo Anne & Donald Rosen
William J. Ruckelshaus
Herman & Faye Sarkowsky
Chuck Sitkin
Charles & Benita Staadecker
Samuel & Althea Stroum Foundation
David & Shirley Urdal
Douglas L. Wilson & Kathleen Makielski
Scott & Shirley Wilson
Marcia & Klaus Zech
1 Anonymous

PRODUCERS' CIRCLE

\$2,500 - \$4,999

Richard & Constance Albrecht
Erich & Anne Read-Andersen
Jennifer Anderson
Stewart Ballinger
James Degel & Jeanne Berwick, Berwick
Degel Family Foundation
Norm & Lisa Bontje

Linda Breneman
Jim Bromley & Joan Hsiao
Paul & Paula Butzi
Allan & Nora Davis
Natalie Gendler
Cheryl Hafer-Lott
James & Barbara Heavey
Jane W. & James A. Lyons
Brooks & Suzanne Ragen
Christopher & Ginny Rice
H. Stewart Ross
Schairer Revocable Trust
Evan Schwab & Carole Fuller
David E. & Catherine E. Skinner
Debra A. Somberg & Johannes Koch
Brian Turner & Susan Hoffman
George & Colleen Willoughby
1 Anonymous

DIRECTORS' CIRCLE

\$1,000 - \$2,499

David & Sheila Aas
Charles & Lynette Ainslie
John Akin & Mary Stevens
Kermit Anderson
Melinda & Walter Andrews
Susan & Lauren Anastead
Bob & Clodagh Ash
Wade Ballinger
Mark Beauchamp & Marc Gelormino
Eric & Luann Berman
Peter & Fran Bigelow
Charles Blumenfeld & Karla Axell
Barbara Blywise, Psychotherapist
Jon & Bobbe Bridge
Nancy Buckland & John Scearce
Dr. William Calvin & Dr. Katherine
Graubard
Donald Cavanaugh
Matthew Clapp
Clark Family Charitable Fund
John & Leslee Currie
Chris Curry
Patricia Daniels & Bill Kuhn
Jane & David R. Davis
Sharon & Doug Diel
Patrick J. & Lanie Dineen
Darrel & Nancy Dochow
Eric Dremel & Debbie Galbraith
James Duncan
Durable Plastic Design, LLC
Betty M. Ederer
David & Marsha Ederer
Marcia Engel
Jeannie Falls
Elise Fortin & Richard Keck
Cathryn Fortune & John Shimer
Dean Gardner
Martin Gibbins & Paula Crockett
Jim & Sherry Gill
Gilman Family Foundation
James & Rhonda Greer
Helen & Max Gurvich
Cristine & Edward Hansen
Dr. Benson & Pamela Harer
Daniel & Whitney Hazzard
Arlene & Doug Hendrix
Sara Comings Hoppin
Hoke Horne
Gary & Parul Houlahan
Jeffrey D. Kephart & Amy S. Faherty
Bob & Skippy Kershaw
Michael G. King
Petra Franklin Lahaie
David Landes & Karen Oatey
Michele & Jim Lechner
Sharon Lee
Gary, Jane, Jessica & Ali Lindsey
Theodore & Mary Ann Mandelkorn
The Chisholm Foundation
Bill & Holly Marklynn
Marcella McCaffray
Bruce McCaw
TJ & Suzanne McGill
Steven McLamb & Catherine Kalita
McLamb
Gloria W. Milliken
Mark & Susan Minerich
Diane Moore & Gary Gallaher
Mary Ann & Bill Mundy
Lauren & Philip Neiswender
Dr. Arnie & Judy Ness
Chris & B.J. Ohlweiler
Linda & George Ojemann
Kristin Olson
Barb & Larry Otto
Laird Patterson, MD
Valerie Payne
Douglas James Perry
Mary Pigott & Roger Giesecke
Arnie & Ann Pomerinke
Alan Rabinowitz
Alan & Barbara Rappoport
Lance & Cindy Richmond
Evelyn Rozner & Matt Griffin
Ken Sanchez & Larry Anderson
Gilbert Scherer & Marlyn Friedlander
Bev & Don Schmidt
Barry & Colleen Scovel
Randolph & Lynn Beaty Sealey
Brad & Young Shain
M. Darrel & Barbara Sharrard
Anne & Langdon Simons
Debra Sinick & David Ballenger
Joel & Anna-Marie Smith
Yolanta & Ronald Spaulding
Jolanne & Jim Stanton
Kim Stindt & Mark Heilala
Taucher Family Foundation
Mark & Arlene Tibergien
Vijay & Sita Vashee
Jean Viereck & Robert Leventhal
Walter & Jean Walkinshaw
Roberta Weeks
Renee Salant & Sam Weis
Judith A. Whetzel
Robert & Marjory Willkens
Alton & Doreen Willoughby
Jane & Leonard Yerkes
Teresa & Bevan Yueh
Shari Zanetti
Igor Zverev & Yana Solovyeva
3 Anonymous

DESIGNERS' CIRCLE

\$500 - \$999

Bill & Janette Adamucci • Daniel Alexander • Michael D. & Marjorie Alhadeff • Nancy V. Alvarez • Eliza Anderson • Robert M. Arnold • Paul Axelrod • Kurt Beattie & Marianne Owen • Glenn Bell • Sharon Best • David & Inez Black • Ed & Betty Bottler • Benjamin & Marianne Bourland • June & Alan Brockmeier • Judith L. Frey • David C. Brunelle • Gerald Buck & Maury Sharp • Donna & Steve Burnstead • Paul & Paula Butzi • Corinne A. Campbell • Diana &

Charles Carey • Kate & Bill Carruthers • Kent & Barbara Chaplin • Thomas Clement • Greta Climer & Kevin Kennedy • Jim & Jan Coleman • George & Carolyn Cox • Bob & Joan Cremin • Pavel Curtis & Kathleen Kells • Barb & Phil Cutler • Susanne & Steve Daley • Kathy & Don DeCaprio • Stan & Margaret Diddams • Wayne Doucette • Anita P. Dougherty • Lynne & Robert Dowdy • Steve & Monique Elfman • Frank Fleetham & Dale Scofield • Roger Katz & Karolynn Flynn • Rick Freedman • Jean Garber & Clyde Moore • Pam Gates & Cliff Solomon • Richard & Mary Beth Gemperle • Sergey Genkin & Anna Nikolaeva • Dr. Eugene & Rena Hamburger Tee • Randall Lee Whiteside & Valerie Hamrick • Pete & Ann Hanson • Lawrence & Hylton Hard • Erik & Evy Haroldson • Mr. & Mrs. Thomas Harvey • Mrs. George M. Hellyer • The Islander Restaurant, John T. Hemphill • Stephanie M. Hilbert • Ineke Hilbrink & Nico Voogt • Vaughn Himes & Martie Ann Bohn • Linda & Jim Hoff • Eric & Mary Horvitz • Susan & Philip Hubbard • Jennifer A. Huerta • Joseph & Linda Iacolucci • Ted & Kris Johnson • Linda & Ted Johnson • John McCarthy & Sherrie Jolliffe • Lisa & Norman Judah • Lura & David Kerschner • Owen King & Joan Thacker • Karen L. Koon • Greg Kucera & Larry Yocom • George & Linda Lamb • Sharon Lamm • Chris Madden • Charles & Aileen Mangham • Marriage & Family Therapy • Tony Martello • Dr. Wayne & Mrs. Dorris Martin • Pamela Burns McCabe • Todd R. Looney & Lucia E. McDonald • Louise J. & Samuel B. McKinney • Will & Karen McMahan • Gail & John Mensher • Euan Menzies • Mina Miller & David Sabritt • Jill Mogen • Megan Moholt • Lee & Sallie Morris • Dayle Moss • Marcia & Jerry Nagae • Sarah Navarre • James Nichols • Amy & Bruce Niermeyer • Chris, Sherry, & Adam Olsen • Tom & Peggy Phillips, Morningside Foundation • Bill & Beth Pitt • Susan & John Pohl • Linda Quirk • Brooks & Suzanne Ragen • Maureen & Joe Rammell • Charles & Doris Ray • Steven & Fredrica Rice • Eloise & Glen Rice, M.D. • Karen Rich • Catherine & Thurston Roach • Jeff Robbins & Marci Wing • Paula Rose • Ron & Lillian Ross • Steven W. Rostad • Dan Rothgeb • Barbara Sando • Stephen & Julie Scofield • Karen & Patrick Scott • Steven & Kate Shaughnessy • Sonia Spear • Carol & Ron Sperling • Sam & Janet Stanley • Dana M. Stout • Louise M. Strander • James H. Stroupe • Jeffrey A. Sutherland • Norm & Lynn Swick • Kevin Tighe • Francis Timlin & Dean Speer • Timothy Tomlinson • Kim & Ann Torp-Pedersen • Paul G. & Mary Lou Dice Vibrans • Eric Weber • Randall Weers • Scott & Jan Weldin • Leora Wheeler • John & Kathy Wilcox • Gerald & Holly Wilson • Sandra Willis-Wright • Catherine & Winslow Wright • Ann P. Wyckoff • Marie R. Zobrist • 7 Anonymous

ACTORS' CIRCLE

\$250 - \$499

Mr. & Mrs. Willie C. Aikens • Bonni & Irv Alpert • Sarah & Robert Alsdorf • Susan & John Anderson • Tom & Barbara Archbold •

ACT CIRCLE OF DONORS

Katherine & Jerald Baillie • Phyllis Bannister • John & Janet Bauer • Jim & Kathleen Bellomo • Valentin Berger & Jerry North • Luann & Irv Bertram • Mick & June Betsch • Marilyn J. Bierman • Bill & Kathy Binder • George & Mary Birchfield • Paradise Pet Lodge • Jerome & Barbara Bosley • Ray & Priscilla Bowen • Lee Anne Bowie & Eddie Lock • Rosemary Boyle • Thomas & Virginia Brewer • Jan Brucker • Dr. James & Donna Brudvik • Dale & Franja Bryant • Carol & Jonathan Buchter • Carl Bunje & Patricia Costello • Carol & John Burns • Henry & Olga Butler • Karen M. Campbell • Linda Capeluto • Dr. & Mrs. Donald E. Carlson • Lisa & Ed Carter • Dr. & Mrs. Sam Castillo • Tony & Margaret Catanzariti • Brian & Becky Chapman • Richard & Mikleane Chouinard • Alan Christiansen & Emily Homer • Zan & Stephan Collier • Theodore & Patricia Collins • William Collins • Judith & Thomas Connor • Ann Cook & Greg Thies • Carol & Clayton Cook • Consuelo & Gary Corbett • Brent Cummings & Jon Miller • David & Catherine Dandel • Deborah Danskin • Ruth Darden • Patrick & Barbara Davis • Cam & Bobbie DeVore • Paula Diehr & Frank Hughes • Daniel Dierks & Sally Avenson • Pamela & Sturges Dorrance • Brian Doty & Michele Stewart • Ellen Downey • Luella & Harold Drevecky • Marc & Beth Droppert • Robert & Doris Eckert • Bruce Eckfeldt & Lisa Dawson • Marvin Eckfeldt • Lori Eickelberg • Gail & Shmuel El-Ad • Anne Ellington • Rae Ann Engdahl • Mordie & Marian Eskenazi • Margo & Rodger Fagerholm • Lyn & Paul Fenton • John & Mariley Ferens • Teresa Ferguson • Pat & Jim Fitzgerald • Fred Fox • Paul J. Fridenmaker • Law Office of Stephen Frost • Terry Gaddis & Lucy Gaskill-Gaddis • Denise Gangnes • Jean Gardner • Francois Gauthier • Max Gellert • Wilmot & Mary Gilland • Boyd & Ann Givan • David & Michele Goldstein • Claire & Paul Grace • Mr. & Mrs. James C. Gray • Jeff & Kelly Greene • Susan Griffith & Drew Fillipo • Stanley & Berthe Habib • Timothy Hale • Edward Hardy • Jeffrey Harris & Judith Wasserheit • Jody Harris • Ernie & Marlyou Hartland • Sharon & David Hartman • Diana & Peter Hartwell • Geraldine/Tubridy Family • Kinne Hawes & Laurie George • Richard & Susan Hecht • Lloyd E. Herman • John & Shelly Hersman • Margot & Paul Hightower • Sigrid Hokanson • Rob Howell & Jackie Bardsley • Barbara & John Huston • Melissa Huther & Gordon Hof • Dean M. Ishiki • Michael Dryfoos & Ilga Jansons • Ann Ramsay-Jenkins & William M. Jenkins • Arthur E. Johnson • James Johnson • Lew & Sonia Johnson • Terry Anne Johnson & Joseph R. Maio • William D. Jones, DDS • Kerri Jones • Michael & Alexandra Jones • Bob & Marcia Kakiuchi • Benjamin F. Kalich • Francis & Peggy Kareken • Paul Kassen • Dr. Carol Scott-Kassner & Kirk Kassner • Jerry Kimball • Rick & Harriett Kirk • Asuman Kiyak & Joseph Clark • Louise Katzman Kurabi • Janet & Robert Lackman • George & Linda Lamb • Karen Lane & Lloyd Hammel • Howard Langeveld • Dennis Larson • Charles Legault & Janet Powell • Virginia & Brian Lenker • Anne Lester • Stacy & Lynn Liedle • Steven & Anne Lipner • Jim Lobsenz & Liz Choy • J.P. Loebel • Kenneth & Peggy Long • Cherie Luckhurst • Mark P. Lutz • Lynch Resources • Helen K. Mark • Arthur Mazzola • Mr. & Mrs. D. Brent McCullough • Ann McCurdy & Frank Lawler • Janet & David McDonald • Al, Connie, Katie & Jenny McEachern • Joanne McElroy • Margaret & Larry McGaughy • Joy McNichols • Theresa Meditch • Nancy & Charles Mertel • Mike & Patti Meyers • Michael & Sarjane Milder • Louise Miller • Col. Norman D. Miller • Chuck & Darlene Mitchell • Robert & Sharlene Mitchell • H. R. Miyoshi • Sarah Moore • Wesley Moore & Sandra Walker • Joel Bradbury & Diane Morrison • Zack Mosner • Annette & Gordon Mumford • John & Faith Munson • Grayson & Adrienne Myers • Roland & Deanna Nelson • Gloria Neuscheler & Gary Williams • Amy & Dan Nordstrom • Craig & Deanna Norsen • Virgil Olson • Judith & Jay Donald Ostrow • Don & Helen Owens • Ralph & Marlys Palumbo • Richard & Janice Pankrat • Cynthia & Bruce Parks • Lori Patton • Lenore Pearlman • Mina & Phillip Person • Jeff & Vicki Pettross • Cyndie Phelps • Elaine & Robert Phelps • Mark & Barbara Phillips • Judy Pigott • Michael Preble • Megan & Greg Pursell • Richard Rafoth • Matthew & Amy Ragen • Bruce & Juanita Randall • Mary Richardson • Bruce Robertson • Maya Sonenberg & John C. Robinson • Ed & Marilana Rubatino • Stephanie Ryan & Craig Fleck • M. Lynn Ryder Gross • Salon Services • Pat & Dean Sampson • Evelyn Schutt • Goldie & Donald Silverman • Marya Silvernale & Preston Briggs • Richard Simkins • Arthur Skolnik & Susanne Loven-Skolnik • Bill & Becky Smead • Alan & Susan Smith • Alcott Damon Smith Foundation • James L. & Sara Gerhart Snell • John & Rose Southall • David Spellman • William Squires • Joseph & Mary Stamper Lynam • Garth & Drella Stein • Nick & Kayalyn Stewart-Peters • Natalie Stien & George Miller • Margaret

Stoner & Robert Jacobsen • Cynthia Gossett & Derek Storm • Gary & Becky Streitmatter • Susan & Daniel Sullivan • Judy & Eli Anne Tangen • Lore & Henry Tenckhoff • Porky Thomsen • May L. Torina • Dr. Richard Tremblay & Susan Everett • Richard Twiss • Janet Upjohn • Edmund & Jacquelyne Von Allmen • Morris & Penny Wade • Dennis Wajda & Chantal Stevens • Doug & Maggie Walker • Mary & Findlay Wallace • Rebecca & Robert Ward • Mike & Judy Waring • Toby & Linda Warson • Carol & Jeff Waymack • Waypoint Ventures • Dr. Judson & Muriel Weaver • Carol Webb & Don Holz • Joan Weber • Lee & Don Weber • Kenneth Weiner & Katherine Fletcher • Susan Landon & Pat Weinstein • Nicholas Whitehead • Lane Williams Architect • Mike & Nancy Windus • Marianne & Jim Wolff • Carla Wong • Thomas H. Wood • Frank Woodruff & Jan Agosti • 12 Anonymous

STAGE CREW'S CIRCLE

\$100 - \$249

Diana & Warren Aakervik • Caren A. Adams • Rob & Melissa Adams • David Aggerholm & Gwendolyn Lundberg • Bob & Tina Alexander • Pam Alexandra • Inez Allan • Frank & Nola Allen • Frank & Nola Allen • Sandy & Ed Alto • Susan & Richard Alvord • Gary & Barbara Ames • David & Connie Anastasi • Connie Anderson • Gilbert & Mary Jane Anderson • Julie Anderson • Michael Anderson • Ingrid Sarapu & Michael Anderson • Mindy Anderson • Sherri Anderson • Ted Andrews & Grtechen Hund • Basil & Gretchen Anex • Warren & Nancy Appleton • Curt & Carla Archambault • Jack & Nancy Armo • Patricia Ashby • Mary Askelson • Ken Smith & Lynne Austin • Garrison Ayars • Diane & Jean-Loup Baer • Jennifer Baker • Jerry & Judy Baker • Kendall & Sonia Baker • Dr. & Mrs. John Baldwin • Ron Baltrusis • Nancy & William Baran-Mickle • William D. & Marjory A. Barbee • Sam & Susanne Bardelson • Kathy Barker • Sandra L. Barker • Thomas Barkewitz • Miriam Barnes • Rob & Elaine Barrick • Dave & Marge Baylor • Shawn Baz • Dorothy Bell • Douglas & Michele Bell • Kathleen Bemis & Don Blair • Eric & Kathleen Berg • Paul Bianchi • Teresa Bigelow • Dick Biles • Dennis Birch & Evette Ludman • Rick & Becky Birinyi • Christina Wright & Luther Black • Patricia Blakely • Rosemary & David Blakemore • Thomas Bleakney & Margaret Stanley • Karen Bloomquist • Pamela Nichols & Charles Bodenstap • Marjorie Boetter • Joseph E. Boling • Richard & Wendy Borton • Teresa & William Bourke • Maria Boyer & Kris Zucconi • Kevin Boze & Grace Reamer • George Muldrow & Robert Bragg • Kristi Branch & James Moore • Kimberly Brangwin • Mary Anne Braund • Joseph & Helen Breed • Roberta & Victor Bremson • JB2D Performance, Inc. • Joyce & David Brewster • Barry Briggs • Jonathan & Catherine Brittel • Nancy Broaders & Bo Blakey • Carol C. Brocker • Alfred & Lene Brooks • Marshall & Jane Brown • Steve & Stefanie Brown • Cathy & Robert Bryan • John & Michele Burke • Martin Burton • Lynne & Michael Bush • Les & Peggy Bussman • Caroline Butler • Julie Byram • Marilyn Byrne & James Lombardo • Milagros Cabrera • John Van Bronkhorst & Judith Callahan • Diane E. Calvert • Jeanne Campbell • Susan C. Campbell • Arthur Caputo • On Safari Foods Inc. • Verda Carey • Carlson Architects • John & Arlene Carpenter • Walt & Maggie Carr • Roy Hamrick & Stephen Carstens • Steve & Midge Carstensen • Joan Carufel • Mary Casey-Goldstein & Steve Goldstein • Michael & Sally Cassidy • Diana Caudill • Jim & Peggy Champin • Terrill Chang & Jan Faull • Lynne & David Chelimer • R.E. Chris Christiansen • Sarah & Stephen Church • Ter Clays • Marilee & Nile Clarke • Cynthia Clay & Leo Brodie • Richard Clow • Julie Cluff • Philip Clum • Luanne Coachman & Robert J. Tasler Jr. • Cathy & Greg Cobb • Anonymous • Virginia Coburn • Patrick & Jerri Cohen • Anita & Taylor Collings • Craig & Sanda Conant • Anonymous • Rachael E. Contorer • Dick Conway & Susan Williams • Janice & Jonathon Cornforth • Jan & Bill Corriston • Anne & George Counts • Mike & Pam Courtney • Sandra Cozzetto • Wayne & Jean Crill • Joyce Crosby • Laura Crouch • Stan & Carol Crow • Virginia & Brian Crynes • Walt & Mary Curtis/ Curtis Designs • William Dabrock • Robert & Linda Dahl • Ken Dale • Susan Daniel • Barbara & Theodore Daniels • Marguerite David • Pamela David • Carol Davidson • Aubrey & Henrietta Davis • Emily Davis • Richard A. & Nancy J. Davis • Colonel James E. & Mary Ann Deal • Paul & Sandy Dehmer • Dottie Delaney • Carole Demas & Stuart Allyn • Deirdre Denckla • Robert DeVinck • Therese DiCicco • Wilma N. Dick • Janice Dilworth & Greg Denton • James & Elizabeth Ding • Anthony & Valerie Ditore • John & Julie Doces • Marcella Donehue • Peter Donnelly • Dick & Gladys Douglas • Lyndsay Downs & Ed Lazowska • Mrs. David Driver • Bruce Duba & Mary

Czerwinski • Kathy Dugaw • John & Virginia Dugaw • Pat & Susan Dunn • Richard & Virginia Dunn • Robert & Alexandra Dunn • Virginia Dunn • Vasiliki Dwyer • Billie Eaton • Allan Whitcomb & Lis Eddy • Debra Leith & Greg Edmiston • Emily & Steven Elliott • James R. Ellis • Jeff L. Ellsworth • Debora & Dale Erickson • John & Marilyn Erickson • Martha Erickson • Sylvia Erickson • Joanne R. Euster • Jerald Farley • Frank & DeAnn Feeman • Eric & Polly Feigl • Linda & Gary Feldman • Laurie Petty • Ronald L. Field • Jed Fife • John & Linda Findlay • Lenita & Dennis Firth • K. Denice Fischer-Fortier & James M. Fortier • Kari & Bruce Fisher • Alexander Fiskien • Rynold & Deborah Fleck • Honorable Betty B. & Robert L. Fletcher • Bruce Florsheim • John Flynn & Helen Walsh • Carter Foreman • Maury Forman • Al & Lynne Forsmo • Anne Foster & John Levesque • Jane H. Fox • Judy Frame • Dan & Denise Fredrickson • Dick & Sharon Friel • Don Fries • T. Kevin Fujioka • Dick & Candice Fulton • Maradel Krummel Gale • Jane & Richard Gallagher • Jodelle Ganter • Mary Garlichs • Roger & Kris Garratt • Mary & Peter Gartshore • Peter & Catherine Gerber • Lynn Geri & Dick Curdy • Louise Gerth • Catherine Gibson • Carla Ginnis • Mary Glynn • Debra J. Godfrey & Jeffrey M. Sconyers • Kim & Michelle Gould • Laura & Paul Gould • Mark Galia • Beatrice Granen • Dan & Wanda Gravett • Gray's Custom Painting • Mike Greer • Sean & Bernadine Griffin • Wendy & James Griffin • Margaret M. Griffiths • Carl & Barbara Grimes • Tracy Gulla • Joe & Nancy Guppy • Paul & Sheila Gutowski • Jerry & Susan Haas • Linda Haas • Lowell & Kathie Hagan • Dr. Shawn D. Hagen • Roger Haight & Marie Hurtado • Nancy Haigwood • Charles & Lenore Hale • Ken & Lynne Hall/Windows Doors & More • Libby Hanna & Don Fleming • Bruce & Linda Hanson • Erica Hanson • Mary Jo Harbold • Steven & Frances Hare • Gary & Candy Harper • John & Marilyn Harris • Richard & Carol Haruff • Richard Hartmann • James & Bette Harvey • Sally & Robert Hasselbrack • Linda Hauta • Ed Hawes • Edward R. Hawkins • John & Gerry Hay • Robert & Sally Hayman • Mr. & Mrs. Don Hebard • Nadine Heichel • Robert & Wendy Henderson • Kellanne Henry • Max Henry • Michael & Julia Herschensohn • Rick & Sheri Hervey • Bob & Judy Higgins • Stuart & Pat Hight • Jerry & Patricia Hillis • Mary & Roland Hjorth • David Hoedemaker & Joni Henry Hoedemaker • Christopher Hoerner • Jim & Sue Hogan • John & Carole Holland • Jana Hollingsworth • Greg Home • Ellen Hovey • Eleanor Howard • Macon Howard • Dr. & Mrs. John Howe • Gary & Chris Huff • C. David Hughbanks • Kevin Hughes • Mike & Teresa Huiras • Robin Humpal • Gordon & Julie Hungar • Earl & Mary Lou Hunt • Marvin & Patricia Hurtgen • Bruce Hutchison • Gordon & Catherine Iles • Susannah Itlis • Wendy Jackson • Stu & Sandy Jacobson • Donald & Cynthia Jacox • Marcia Jaeger & Floyd Karp • Reed & Denise Jarvis • Warren & Mary Jane Jessop • Sally & Warren Jewell • Al & Sue John • David B. Johnson • Roger W. Jones • Stephen & Karen Jones • Kathy & Scott Jones • Chris Jordan & Victoria Sloan-Jordan • Ellen Juhl • Suzanne & Christopher Kagen • Dr. & Mrs. Charles Kaplan • Charles Kaplan • H. David Kaplan • Gail & David Karges • Alexandra Kaufman • Kirk & Sunny Sue Kaynor • Lynn & Rick Keat • Donna & David Kehle • Gail Kelley & Joan Noste • Robert & Denise Kelley • Kathryn Ann Kelly • Laurie & David Kelly • Lucinda Kelly • Sherrie Kemper • Patricia E. Kern-Cardillo • Brenda Kerr & Denny Minno • David & Patricia Kile • Patricia Killam & Richard Wenger • Gary Kinder • Margaret Kineke & Dennis West • Karen & David King • Lori Kingery • Mimi, Edward & Johanna Kirsch • Mr. & Mrs. Ted Kirschbaum • Patricia & Carl Kishline • Wendi S. Klein • Margaret D. Kleyn • James Knisley • Victoria Knoll • Linda Paris & James Knoop • Steve Knudsen & Mardi Hopkins • George Kodama • Allan & Mary Kollar • Molly Kongslie • Steven & Claudia Koransky • Alan Koslow • Scott Krahlung • Pam & Paul Krauss • Wayne Dodge & Lawrence Kreisman • Frank F. Kroger • Barbara Krohn & Associates • Joanne M. Kuhns • Susan Kunimatsu & Gary Epstein • Jim & Jean Kunz • Jill Kurfirst • Jane & Peter Lamb • Chris & K.C. Landes • Lisa & Peter Landry • June Lane • Stephen & Maria Lans • Inge Larsen • Kevin, Melissa & Kristoffer Larson • Mary Lawrence • Rhoda & Thomas Lawrence • David & Catharine Lawson • Julie & Roy Lawton • Mary Reeves Leber • Lyn & Doug Lee • Patricia Lein • Sharon Leishman & Duane Muller • James & Christy Leith • Robert & Lauri Lemay • Martha S. Lester • Rachael & Phillip Levine • Michael & Nancy Lewars • Dr. & Mrs. Donald Lewis • Rebecca & John Lewis • Kathleen & Jeffrey Lindenbaum • Donna Lipsky • Bill & Esther Littlejohn • Larry & Phyllis Loeb • Karen & John Loeser • Sylvia Lucas • Dan & Cathy Lungren • H. J. Lurie • Gloria Luster • Mr. & Mrs. Stephen Lutz • C. Gilbert Lynn • Betsy MacGregor •

ACT CIRCLE OF DONORS

Wolfgang & Francesca Mack • Joann Malavotte • Susan Mamlock • Genjo Marinello & Carolyn Stevens • Charles & Sandra Marks • Mary Martin • Paul & Mary Jo Martin • Rodney Martin • Nel Mascall • William & Judith Matchett • Suzanne Matsen • Michael & Rosemary Mayo • Phyllis Mayo • Anonymous • Fayne McCaffray • Mary Beth & Lorne McConachie • Dierdre McCrary • Bruce & Coco McDougall • Charlie Jee Woo Funk & Casey Jin Kyoo Funk • Maureen McGee • John & Dorota McHenry • Jean McIntosh • Don McLaren & Joanne Chase • Edward & Duse McLean • Karen & Rick McMichael • Mr. & Mrs. P. McRae • Mark & Kimberly Mecham • Stan & Carol Merrell • Tim & Janet Merriam • George L. Meshke • Mary Metastasio • Jane & Bob Brahm • Susan Harmon & Richard Meyer • Terrance & Barbara Miller • Heath Miller • Jerrold & Leslie Milstein • Susan & Michael Mise • Constance & Michael Mitchell • GG & Lex Mitchell • Beth Moll • Peter & Jolene Momiclovich • Roger Morris • Linda Morud & Steve Wolfe • Jayne Muirhead • Salvador Mungia • Bridget Murphy • Lee & Rob Murray • Ralph & Phyllis Nansen • Margaret Nason • John Naye • Ivy Negent • Rosalie & Duane Neitzel • Joan Nelson • Marlene Nelson & Curt Chenoweth • Marc & Joyce Nemirow • Ann Newman • Mardi Newman • Victoria Nichols • Marie Nisbet • Charles & Cathy Novak • Ron & Nancy Novak • N. Michael Novick • Mike & Julie O'Brien • Jean & Joseph Okimoto • Elizabeth A. Olson • Amy Olts • Michael Oliver • Kim O'Neal • Betty & Gordon Orians • Brenda Osterhaug & Scott March • Elizabeth F. Otis • Ruth Ann Parish • Anonymous • Susan Perkins • Ed & Carol Perrin • Pamela Perrott • Henry & Janet Perry • Drs. Art & Elaine Peskind • Jon H. Peterson • Karen Peterson • Rick & Maggie Peterson • Greg & Peggy Petrie • Dan & Johnette Pevarnick • Donald & LeVere Phelan • Mr. & Mrs. Ron Pinckney • Brian Placzek & Diana Leung • John Cramer & Suzanne Poppema • Steve Poteet • Billie Potts • Island Graphic Services • Michael & Elizabeth Pray • Robin Prichard • Kathleen Prindle • Jackie & Patricia Pritchard • Lucy & Herb Pruzan • Gwen & Don Purdy • Darryn Quincey • Daniel & Barbara Radin • Joyce Radke • Steven & Sharon Rafter • Cameron & Tori Ragen • Kathryn Raich & David Jones • Andrea Ranage • Mrs. Ted Rand • Toni Ann Randoni • Gail Ingersoll Ransom • Wendy & Murray Raskind • Norah & Alan Rasmussen • Vic & Louise Rasmussen • Elizabeth W. Ravenscroft • Greg Redding & Joyce Jacobs • Bruce & Patty Reed • Harley Rees • Craig & Melissa Reese • Laura Rehrmann • Denise & Stephen Reibman • Cecilia Paul & Harry Reinert • Mike & Shelly Reiss • Alan & Susan Reiter • Bill & Terry Resnik • Peter & Debra Rettman • Cynthia S. Richardson • Paul Muldoon & Karen Richter • Randall & Margaret Riddle • Peg Rieder • Annemarie Riese & Terry Kisner • Leon & Cynthia Rigby • Ted & Teresa Rihn • Ed & Marjorie Ringness • Mary L. Robb • Kathleen Robel • Drs. Tom & Christine Robertson • Merlin G. Rohrssen • Beth Rolling • Allan & Karla Romano • Robert Anthony Romeo • Thomas P. Rook • Morris & Gail Rosenberg • Judy Soferman & Marc Rosenshein • Jean & Gary Tarbox • Simeon & Adrienne Rubenstein • Gloria Runnings & Howard Kenney • James & Lois Russo • Richard & Nancy Rust • William K. Rutledge, Jr. • Jerry Sale & Rachel Kleivit • Dr. & Mrs. Werner E. Samson • Peter M. Samuelsen • Lois Sandberg • Sue Anne Sanders • Pat & Tonya Sargent • Anonymous • Chris & Emily Sasnett • Stuart & Amy Scarff • Joseph Schaeffer • Ron & Ruth Schaps • Judy & Andrew Scheerer • Werner & Jeanette Schimmelbusch • Anonymous • Anonymous • Andrew & Esther Schorr • Amy Schottenstein • John & Katherine James Schuitemaker • Dean S. Scotton • Claire & George Scranton • Audrey Seefeldt • Bob & Sandy Seidensticker • Tor Seidler • Yvonne L. Seidler • Rita & Dic Selin • Lee Sells • Bill Setter • Jamie Shaffer & Robert Wham • Leonard & Patricia Shapiro • Terry & June Sharrard • Barb Shaub • Karen Shaw & Larry Hohm • Lynn Shemanski • Jiawen Shi • Scott Shock • Floyd & Faye Short • Dr. & Mrs. David B. Shurtleff • Sonia Siegel Vexler • Susan & Stan Silberman • Peter Sill & Marcia Joslyn Sill • Alan & Sally Simmons • J. Simon • Evelyn Simpson • Bill & Marilyn Skelly • John Skinner & Peggy O'Neill Skinner • Suzanne Skinner • Todd & Julie Sloan • Beverly Smith • Loretta Smith • Milton & Metta Smith • Paul Smith • Randy Smith & Sharon Metcalf • George & Susan Smith • Richard F.X. & Susan Smith • Karleen Snetsinger • Fred Grant & Greg Snider • Helen T. Snyder • Richard Spangenberg • Karen Sparks • Linda Barker Spear • Drs. Michael & Wendy Spektor • Everett Yacht Sales • Gail & Robert Stagman • Elizabeth Steele • Marty Steele • Jenn Steff • Alec & Jane Stevens • Jon & Virginia Stewart • Bettina Stix • Ruthanne Stolk & Kelly Miller • Ellen Story • Bill & Bobby Street • Mitchell & Karen Streicher • Judy & Pat Strosahl • Carol Stumpf • Michael & Jennifer Sturm • Christina Surawicz

& James Bushyhead • Earl & Charlotte Sutherland • Angela & Carl Sutter • Carolyn Swanson • Tom Sykes & Sarah Thomas • Alex & Lucy Sytman • Lauren H. Taft • Nina Tang • Jeff & Marla Tangen • Catherine Taylor & Laurie Scullin • David Taylor • Richard Taylor & Miriam Kahn • Bill & Pat Taylor • Betty Tazioli • Dave & Katherine Tempest • John & Elizabeth Terrey • Dr. Horace Thuline & Janice E. Tessin-Thuline • Joe & Dorlean Thomas • Greg & Michele Thompson • Linda & John Thompson • Michael Thompson • Michael Thorwick & Shelley Scheier • Cynthia Tower • Cal & Linda Treger • Betty Lou & Irwin Treiger • Christopher & Mary Troth • Susan & Robert Turner • Biggie Unger & Bruce Flory • Karl Valentine • Ray & Debra Valpey • Dirk & Mary Lou Van Woerden • Greg & Debarah Vandenberg • Pieter & Tjitske Van der Meulen • Mr. & Mrs. S. Rao Varanasi • Lada Vishtak • Allan & Sandy Voves • Richard Wagner • Sally Waldox • Douglas Wallace • Margaret & Randy Wallace • Moe & Sharyn Wallin • Tom Wallin • Jane & Daniel Walker • Judith Warshal & Wade Sowers • Susan Waskey-Ryan & Thomas Ryan • Linda & Douglas Watson • Ron & Peggy Watt • Jack & Elaine Webber • Lucy & Larry Weinberg • Sam & Virginia Weirbach • Morton & Judy Weisman • Jim & Sharron Welch • Rory & Pravan Westberg • John Wheeler & Anne Durbin • Lois White & Larry Hall • Karen & Peter Wickstrand • Virginia Voorhees Wilcox • Daryl & Maridee Wildermuth • Fred & Deborah Wilds • Gary Williams & Gloria Neuschauer • Jerry & Kathleen Willins • Daryl Wilson • Judy & Don Wilson • Kristine & Patrick Wilson • Richard & Sally Wilson • Karen & Lee Wimberly • Barry & Peggy Witham • Max Witter & Marcia Johnson • Susan Wright • Rollie Wulff • Pat & Robert Wyman • Melissa A. Yeager & Cory Van Arsdale • Brian D. Young • Joanne Young • Danny & Amor Youngs • Greg & Marilyn Zick • Derek & Penny Ziemer • Marianne Zollman • Gerard & Pamela Zytnicki • 58 Anonymous

GIFTS IN TRIBUTE

In memory of Sally Robertson: Donna & Albin Bystrom, Melissa Hines, Kathy Ksieh, Peggy Scales, Anonymous • In memory of Scott Weldin: Kay & Ron Adams, JoAnn Cowan, Sarah Nash Gates, Helen Georges, Carolyn Keim, Edgar & Linda Marcuse, Rick Paulsen & Roberta Russell, Connie Rinchiuso, United Scenic Artists

ACT would like to thank the following Corporations for their contributions through Gift Matching Programs. We greatly appreciate the support of these institutions and their employees:

Adobe Systems, Inc. • Alaskan Copper Works • Amgen • Bank of America • The Boeing Company • Coca-Cola • Dorsey & Whitney LLP • Eli Lilly & Co. • Expedia, Inc. • Harbor Properties, Inc. • Laird, Norton Trust Co. • Microsoft Corporation • New York Life Insurance • Northern Trust Bank • Perkins Coie • Quellos Group, LLC • Safeco • UBS Foundation • US Bank

ACT's Development Department works to maintain our list of donors as accurately as possible. We apologize for any misspellings or omissions that may have been printed. Please contact our office so that we may correct any mistakes in future publications. Contact Rebecca at rbrinson@acttheatre.org or at 206-292-7660 ext. 1330.



WILL POWER: A bequest to ACT Theatre made through your will or estate plan ensures ACT's theatre tradition for future generations. For more information, contact Marci Wing at 206-292-7660 ext. 1333, or mwing@acttheatre.org.

SPECIAL FUND DONORS

ACT ENDOWMENT FUND DONORS

ACT's endowment is administered by the A Contemporary Theatre Foundation.

Buster & Nancy Alvord
Katharyn Alvord Gerlich
Becky & Jack Benaroya
Charles Blumenfeld & Karla Axell
Bruce & Dawn Goto
William Randolph Hearst Endowed Fund
for Education & Outreach Programs
Kreielsheimer Remainder Fund
Sally Pence
Katherine & Douglass Raff
Brooks & Suzanne Ragen
Herman & Faye Sarkowsky
David E. & Catherine E. Skinner
Kayla Skinner
Estate of Stuart Smailes
David & Joyce Veterane
The Peg & Rick Young Foundation

A SEATTLE THEATRE CONSORTIUM DONORS

These visionary community funders have contributed to the "Tessitura Conversion Project," a collaborative effort by ACT Theatre, The 5th Avenue Theatre, INTIMAN Theatre, Seattle Children's Theatre and Seattle Repertory Theatre to upgrade to a shared ticketing and donor management software. This new technology will enhance our ability to serve our patrons and to collaborate on joint projects for years to come.

The Paul G. Allen Family Foundation
ArtsFund
The Boeing Company
The Bill & Melinda Gates Foundation
Microsoft Corporation
M.J. Murdock Charitable Trust
Nesholm Family Foundation
The Norcliffe Foundation
The Seattle Foundation

BOARD OF TRUSTEES

ACT BOARD OF TRUSTEES

Gregory A. Falls
Founding Director
Philip M. Condit
Chairman
John C. Siegler
President
Bradley C. Fowler
Vice President
Scott F. Wilson
Treasurer
Kristin G. Olson
Secretary

Daniel P. Alexander
Todd Barker
Joan D. Barokas
Laura P. Besteman
James H. Bromley, Jr.
Jerry A. Dark
Daniel D. Ederer
Jeannie M. Falls
Frank G. Fleetham

Daniel B. Hazzard
Whitney V. Hazzard
Robert Howie
Petra Franklin Lahaie
Gloria A. Moses
F. Lauren Neiswender
Alan J. Rappoport
William J. Ruckelshaus
Denise L. Seavitt
Brad Shain
Debra A. Somberg
Benita M. Staadecker
Jolanne L. Stanton
Sonya Stoklosa
Brian Turner
Joyce Veterane
George V. Willoughby
Teresa E. Yueh

ARTSFUND BOARD INTERN

Aaron Goldsmid

ACT ADVISORY COUNCIL

Sheena R. Aebig
Dr. Ellsworth C. Alvord, Jr.
Aubrey Davis
Jean Burch Falls
John H. Faris
Elise Fortin
Carolyn H. Grinstein
Sara Comings Hoppin
C. David Hughbanks
Katherine Ann Janeway
Jonathan D. Klein
Keith Larson
Jane W. Lyons
Nadine H. Murray
Douglas E. Norberg
Donald B. Paterson
Eric Pettigrew
Pamela Powers
Katherine L. Raff
Brooks G. Ragen
Catherine Roach
Jo Anne Rosen
Sam Rubinstein
David E. Skinner
Walter Walkinshaw

Dr. Robert Willkens
David E. Wyman, Jr.
Jane H. Yerkes

EMERITUS COUNCIL

Richard C. Clotfelter
P. Cameron DeVore
Mrs. Walter E. Schoenfeld
Marvel Stewart

A CONTEMPORARY THEATRE FOUNDATION

Philip M. Condit
Chairman
Katherine L. Raff
President
Dr. Ellsworth C. Alvord, Jr.
Vice President
Kermit Anderson
Secretary
Lawton Humphrey
Treasurer
Katherine Ann Janeway
Catherine Roach
John C. Siegler

ACT STAFF

Kurt Beattie
Artistic Director
Susan Trappell
Managing Director

ARTISTIC

Margaret Layne
Artistic Associate & Casting Director
Anita Montgomery
Literary Associate & Education Outreach Director
Valerie Curtis-Newton
Artistic Associate, The Hansberry Project
Vivian Phillips
Producing Associate, The Hansberry Project
Adrienne Littleton
Literary Intern
Tess Branson
Directing Intern

ADMINISTRATION

Nicole Boyer Cochran
Assistant to the Artistic & Managing Directors
Russell Wilford
Facilities Manager
Flint Dominic
Systems Administrator
Jack Hilovsky
Special Events Coordinator
Dave Parmley
Engineer
Lyam White
Administrative Assistant
Teddy Heard
Facilities Maintenance

FINANCE

Mary D. Brown
Chief Financial Officer
Michael Scheinine
Accountant
Tobi Beauchamp-Loya
Payroll

DEVELOPMENT

Sharon J. Gilmore
Director of Development
Marcy Wing, CFRE
Assistant Director of Development
Michelle Lewis
Grants & Special Projects Manager
Nicholas Barnett
Donor Relations & Events Manager
Rebecca Brinson
Development Assistant

COMMUNICATIONS & MARKETING

Karen L. Bystrom, ABC
Director of Communications
Jessica Nikkel
Marketing Assistant
Michael Allen
Digital Communications
Christa Fleming
Graphic Designer
Chris Bennion
Photographic Services
Nichole Mancini
Group Sales

AUDIENCE SERVICES

Harley Rees
Director of Audience Services
Derek Pavone
Sales Manager
Ryan Rowell
Assistant Sales Manager
Stephen Jackson
Audience Services Manager
Sean Collins
Shawn Brown
House Managers
Greg Adair
Katalina Caliendo
Katy Coale
Adé Conner
Christine DiTolvo
Maureen Finneran
Ana Gabriel
Karen Herschleb
Joli Holbrook
Kate Kowal
Emilie Kuester
Chris Olson
Nate Quiroga
Desirée Reyes
William Rockwell
Barry Vail
Bill Williams
Audience Services
Christine Jew
Volunteer Usber Coordinator

PRODUCTION

Joan Toggenburger
Producing Director
Kristina Wicke
Production Coordinator

Beth Matthiessen
Technical Production Assistant

STAGE MANAGEMENT

Jeffrey K. Hanson
Production Stage Manager
JR Welden
Stage Manager
Nora Menkin
Assistant Stage Manager

COSTUME DEPARTMENTS

Carolyn Keim
Costume Director
Connie Rinchiuso
Costume Shop Foreman
Kim Dancy
First Hand/Lead Dresser
Sally Mellis
Wardrobe Master
Joyce Degenfelder
Wig Master
Martin Sanchez
Dyer/Painter

SCENIC DEPARTMENTS

Steve Coulter
Technical Director
Derek Baylor
Assistant Technical Director
Austin Smart
Master Scenic Carpenter
Alison Fair
Jeff Manzolli
Sean Wilkins
Scenic Carpenters

Mona Lang
Scenic Charge Artist
Lisa Bellerio
Assistant Charge Artist
Marne Cohen Vance
Properties Master
Ken Ewert
Master Properties Artisan
Thomas Verdos
Lead Properties Artisan
Tristan Hansen
Properties Artisan

STAGE OPERATIONS

Nick Farwell
Stage Operations Supervisor
James Nichols
Master Stage Carpenter
Pam Mulkern
Master Electrician
Dominic Cody Kramers
Master Sound Engineer
Tod Ackley
Sound Engineer
Ian Gardner
Stage Carpenter

Scenery, stage and costume work is performed by employees represented by I.A.T.S.E. Local Numbers 15, 488 and 887.

Program Editor
Jessica Nikkel
jnikkel@acttheatre.org

Cover Design
Christa Fleming Design
christa@christafleming.com