

ACT

CELEBRATING

40

YEARS

OF CONTEMPORARY
THEATRE

ACT THEATRE PRESENTS

Bach at Leipzig

The Ugly American

Born Yesterday

BY Garson Kanin

DIRECTED BY Warner Shook

The Night of the Iguana

Vincent in Brixton

Flight



THEATRE



JUNE / JULY 2005



ACT THEATRE PRESENTS

It takes a great audience
to make great theatre.

For forty years each and every patron at ACT has played a critical role in the theatre. Purchasing a subscription or even one ticket is a key investment in the future. Making a donation is equally important. Both ensure the promise of exceptional theatre for years to come.

In 2005, as we celebrate our 40th Birthday, we hope we can count on you for both. To do so, or for more information, visit our website or give us a call.

Our plays — and our
future — depend on you.

Bach at Leipzig
The Ugly American

Born Yesterday

BY Garson Kanin

DIRECTED BY Warner Shook

The Night of the Iguana
Vincent in Brixton
Flight



Kreielsheimer Place, 700 Union St., Seattle WA 98101

206.292.7660 TEL 206.292.7670 FAX 206.292.7676 TIX

ON THE WEB AT acttheatre.org

A Contemporary Theatre is a 501(c)(3) non-profit organization.



Welcome to ACT Theatre's 41ST Season – A Season to Embrace!



Forty years ago, on June 29, 1965, Greg and Jean Burch Falls opened the doors of A Contemporary Theatre for the first time. Seattle residents and journalists were giddy over the prospect of having "year-round professional theatre." The Seattle Rep had opened a year earlier and featured plays in the winter months, focusing on classics. That summer ACT – or a.c.t. – opened with *Oh Dad, Poor Dad, Mama's Hung You In The Closet And I'm Feeling So Sad*. Summertime theatre at ACT remains devoted to the most joyous, entertaining, enlightening theatre that we can bring you.

This program is dedicated to Greg and Jean and the entire Falls family, and to the many actors, designers, directors, technicians, support staff, trustees, and to the countless donors and subscribers who have shared our triumphs, our stumbles, and our move to a new home. We've made a lot of theatre together. Here's to 40 more years of ACT – a contemporary theatre. Enjoy your summer and enjoy the show!

TABLE OF CONTENTS

- 3 The Company
- 4 The Actors
- 7 Production Team
- 9 About the Playwright
- 10 Notes on the Production
- 12 Board of Trustees
- 13 ACT Donors
- 20 Executive Staff
- 21 ACT Staff

Program Editor
Harley Rees
reesh@acttheatre.org

Program Design
Christa Fleming Design
christa@christafleming.com

PHOTOS OF ACT THEATRE SEATS: Brian Fleming | brianfleming.com

Kurt Beattie
ARTISTIC DIRECTOR

Susan Trapnell
MANAGING DIRECTOR

ACT THEATRE PRESENTS

Born Yesterday

BY

Garson Kanin

DIRECTED BY

Warner Shook

June 17 - July 17, 2005

OPENING NIGHT

June 23, 2005

Presented by special
arrangement with
Samuel French, Inc.

SPONSORED BY:



large print
version of the
Program is
available from
the house staff.

ACT Theatre is a member of the League of Resident Theatres (LORT), the American Arts Alliance, Theatre Puget Sound, and is a constituent of Theatre Communications Group. ACT is also a member of the Downtown Seattle Association. This theatre operates under an agreement between LORT and Actors' Equity Association, the union of professional actors and stage managers in the United States. Directors and choreographers at ACT are members of the Society of Stage Directors and Choreographers, an independent national labor union. The scenic, costume, lighting and sound designers are represented by United Scenic Artists Local USA-829, IATSE.

July 29 - August 28

The soul
and the
flesh in
conflict.

Tennessee Williams

The Night of the Iguana

DIRECTED BY JON JORY

September 2 - October 2

*Fascinating, funny, and
deeply moving.*

Vincent in Brixton

BY
NICHOLAS
WRIGHT

DIRECTED BY
KURT
BEATTIE

image: 200017220-001 Jason Lange/Getty Images

IT'S NOT
TOO LATE TO
SUBSCRIBE
TO THE 2005
SEASON!

WE'RE
MAKING A
Play
FOR
You!

JULY 29 - AUGUST 28:

The Night of the Iguana
BY TENNESSEE WILLIAMS

SEPTEMBER 2 - OCTOBER 2:

Vincent in Brixton
BY NICHOLAS WRIGHT

OCTOBER 14 - NOVEMBER 13:

Flight
BY CHARLAYNE WOODARD

NOVEMBER 24 - DECEMBER 24:

Charles Dickens'
A Christmas Carol
ADAPTED BY GREGORY A. FALLS

2005 SEASON

THE COMPANY

CAST (in alphabetical order)

Tim Gouran*	Bootblack/Bellhop/Waiter
Jennifer Lyon*	Billie Dawn
Jane May	Manicurist
Joseph P. McCarthy	Eddie Brock
Jayne Muirhead*	Mrs. Hedges/Helen
David Pichette*	Senator Hedges/ Ass't Hotel Manager
Paul Morgan Stetler*	Paul Verrall
Brian Thompson*	Barber/Bellhop
R. Hamilton Wright*	Ed Devery
Richard Ziman*	Harry Brock
Dee Dee Gracey-Lee	Herself

PRODUCTION TEAM

Warner Shook	Director
Robert A. Dahlstrom	Scenic Design
Frances Kenny	Costume Design
Mary Louise Geiger	Lighting Design
Jim Ragland	Composer and Sound Design
Geoffrey Alm	Fight Director
Anne Kearson*	Stage Manager
LB Morse	Assistant Lighting Design
Nora Menkin	Production Assistant

*Denotes membership in Actors' Equity Association, the professional union for actors and stage managers in the United States.

There will be
one intermission.

The scene is
Washington, D.C.

TIME 1946

ACT 1 September

ACT 2 About two months later

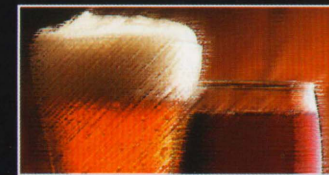
ACT 3 Later that night

Audience members are
cordially reminded to
silence all electronic
devices such as cell
phones, watch alarms,
and pagers prior to the
performance.

All forms of photo-
graphy and the use of
recording devices are
strictly prohibited.

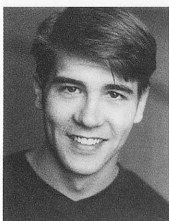
Please do not walk on
the stage before, during
or after the show.

THE EXCLUSIVE CLUBS OF BEVERAGE BISTRO



Proud sponsors of the monthly Beer and Wine Tasting Nights
The Vineyard Wine Club The Rare Beer Club
www.beveragebistro.com 888-380-2337

THE ACTORS



Tim Gouran (Bellhop/Bootblack/Waiter) is happy to be returning to ACT!!! He was last seen here in 2002 as Kenny in *Fuddy Meers*. Recent roles in Seattle include Jett Rink in Book-It Theatre's *Giant* and Colin in Seattle Children's Theatre's production of *The Secret Garden*. Tim has also been seen on the stages of Seattle Repertory Theatre, Seattle Shakespeare Company, Theater Schmeater and Annex Theatre. He sends love to "Sugarpop," "Bare Belly" and "Soft & Twitchy."



Jennifer Lyon (Billie Dawn) is a recent graduate of the North Carolina School of the Arts and is thrilled to have this opportunity. At the Wilma Theatre she played Violet Grey in Polly Penn's world premiere musical *Embarrassments*, directed by Blanka Zizka, and the title role in Tom Duzniak's world premiere comedy *Hail Mary*, directed by Pamela Hunt at the Studio Arena Theatre. Ms. Lyon has also appeared in the new musical *Hexed in the City* at the Belt Theatre, *Only 10 Minutes to Buffalo* at the Lincoln Center Institute and David Simpatico's *Waiter, Waiter* at the Greenwich House Theatre. She would like to thank her family, NCSA, Talentworks, the ice cream shop, and the wonderful director, cast and crew involved in this production.



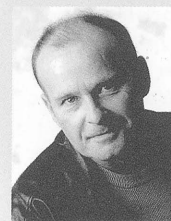
Jane May (Manicurist) is excited to be back on stage at ACT after performing in past productions of *Omnium-Gatherum* and *A Christmas Carol*. Recent Seattle roles include Arlene in Theater Schmeater's production of *Getting Out* and Cassie Cooper in *Rumors* at Center Stage. Jane has also worked with Interplayers Theater, Seattle Public Theater, Washington Shakespeare and regionally at Western Stage in the Monterey Bay area.



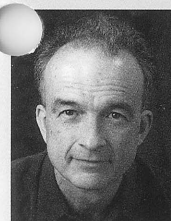
Jayne Muirhead (Mrs. Hedges/Helen) A local actor for 25 years, Jayne began her professional career in *Seattle Eclectic* for ACT's Songworks program. Over the years she has performed in seven other ACT productions including *5X5*, *Can We Talk?*, *Happenstance*, *The Downside*, *Lloyd's Prayer*, *A Christmas Carol* (1986) and Jayne's *Adventures in Hell*. In 1991 she originated the role of Fricka for Seattle Opera's production of *Das Barbecü*. She is a regular performer at Seattle Children's Theatre, most recently in the title role of *Hello! Mrs. Piggle Wiggle*. An accomplished cabaret performer, Jayne was a member of the Amazing Pink Things and the Sirens of Swing.

She has penned four one-woman shows: *Jayne a la Carte*, *Indiana Jayne and the UFO*, *Jayne Unchained* and *The Once and Future Jayne*, and is working on her fifth, *Jayne Eyrehead*. She has appeared in two films, *Bombs Away* and *The Wright Brothers* – both locally produced.

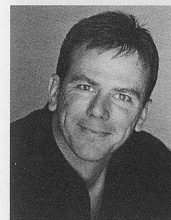
THE ACTORS



Joseph P. McCarthy (Eddie Brock) is happy to be making his debut at ACT. He was last seen as Army in *Requiem for a Heavyweight* at Theater Schmeater and as Decius Brutus in Wooden-O's production of *Julius Caesar*. Joseph is a founding member of Second Story Repertory Theater in Redmond. He has performed with Arts West, Tacoma Actors Guild, Bathhouse, New City, and with theatres in L.A., the East Coast and may be remembered as Lewd Fingers in *Angry Housewives* at Pioneer Square Theater. He is a choreographer and teaches theatre. Joseph has directed teens on tours including to India and the British Islands, where he conceived, wrote and directed *Home Is Where...*, an original musical about homeless teens for the Edinburgh Fringe Festival.

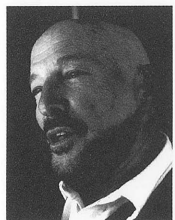


David Pichette (Senator Hedges/Assistant Hotel Manager) appeared earlier this year in *Bach at Leipzig* and in ACT's "Winter Thrills" production of *The Woman in Black*. Last season ACT audiences saw David in *Alki*, *Enchanted April*, as George Moore in *Jumpers* and Hercule Poirot in *Black Coffee*. Prior to that he was Ebenezer Scrooge in the 2002 production of *A Christmas Carol*. Other recent performances at ACT include the plays *Grand Magic*, *Communicating Doors*, and his solo performance in David Hare's *Via Dolorosa*. In the last 20 years at ACT some of his favorite roles have been Ziggy in *Side Man*, Abbe de Coulmier in *Quills*, Martin in *Maydays*, Grez in *Red Noses*, Williamson in *Glengarry Glen Ross*, King Charles in *Sunsets and Glories*, and Golutvin in *The Diary of a Scoundrel*. Other local credits include numerous appearances at The Empty Space, Intiman, Seattle Repertory Theatre, Tacoma Actors Guild, and as Henry Higgins in The 5th Avenue Theatre's production of *My Fair Lady*. David has also worked recently at Alliance Theatre in Atlanta, San Jose Repertory Theatre and at Arizona Theatre Company.

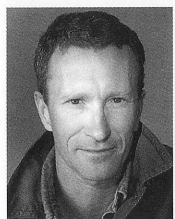


Paul Morgan Stetler (Paul Verrall) returns to ACT having previously played Mariano in *Grand Magic* and Bob, the slightly off-center deliveryman, in *Wintertime*. Recent Seattle credits include Orlando in *As You Like It* and Angelo in *Measure For Measure* at Seattle Shakespeare Company, Richard in *Living Out* (a co-production with Kansas City Rep) and Benvolio in *Romeo and Juliet* at Seattle Repertory Theatre. Other roles include Quintas in *Titus Andronicus* and Lexy in *Candida* at Intiman Theatre, Jonas in *A Taste of Sunrise* at Seattle Children's Theatre, Bo in *Bus Stop*, Gordon Miller in *Room Service* and King Henry VIII in *A Man for All Seasons* at Village Theatre, and Adam in *Rough Crossing* at Tacoma Actor's Guild. An original member of Circle X Theatre in Los Angeles, Paul originated the roles of LeCat in Glen Berger's *Great Men of Science Nos. 21 & 22* and Houston in Louis Broome's *Texarkana Waltz*, a role he later reprised at Empty Space Theatre. He holds an MFA from Penn State University.

THE ACTORS

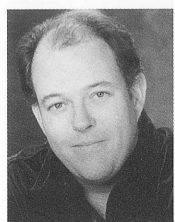


Brian Thompson (Bellhop/Barber) was recently seen in Book-It's production of *Travels With Charley*. Most recently at ACT Brian was in *Black Coffee* and has appeared in four editions of *A Christmas Carol*. Other plays at ACT include *Henry IV Part 1*, *Principia Scriptoriae* and *Hapgood*. With Book-It he has also been seen in *Pride and Prejudice* and in *Hard Times*. He has performed the role of Scrooge in TAG's production of *A Christmas Carol* twice. Brian has also performed at Seattle Rep, Intiman and Empty Space. He was the founder and first Artistic Director of Bathhouse Theatre. Regional credits include *The Seagull* at Dallas Theatre Center, *Heartbreak House* at Alliance Theatre in Atlanta, and *The Devils* and *The Cripple of Inishmaan* at Portland Center Stage. He also spent six seasons in the company at the Berkeley Rep and two at the Oregon Shakespeare Festival in Ashland and performed in many other theatres around the country. He is the recipient of a Dramalogue Award for his Gaev in *The Cherry Orchard* at San Francisco's Eureka Theatre.



R. Hamilton Wright (Ed Devery) was last seen at ACT as Kauffman in *Bach at Leipzig*. In 2004 he played Ebenezer Scrooge in *A Christmas Carol*, Captain Hastings in *Black Coffee*, Peer Gynt in *Alki*, Antony Wilding in *Enchanted April* and Archie in *Jumpers*. It has been twenty-five years since Bob first appeared on the ACT stage in Sam Shepard's *Buried Child*. Since then some of his favorite ACT experiences have been *Red Noses*, *End of the World*, *On the Razzle*, *Our Country's Good*, *A Chorus of Disapproval* and *The Jail Diary of Albie Sachs*. Earlier this year he directed *Scapin* at the University of Washington and his play *Greensward* – originally workshopped

in ACT's First Act new play program – was selected for the Seattle Rep's Hot Type Festival, where it was performed in February.



Richard Ziman (Harry Brock) has previously appeared at ACT in *Polish Joke*, *Grand Magic*, *Mitzi's Abortion* and *A Christmas Carol*. On Broadway Richard's credits include *Henry IV*, *Not About Nightingales*, *Laughter On the 23rd Floor*, *Epic Proportions*, *Lost in Yonkers* and *Biloxi Blues*. Off-Broadway appearances include *Kit Marlow*, *Twelfth Night*, *Julius Caesar*, *The Two Gentlemen of Verona*, *The Normal Heart*, *How It All Began*, *Polish Joke*, *The Resistible Rise of Arturo Ui*, *Danton's Death*, *Misconceptions* and *Tulsa*, for which he received a Dramalogue Award. Regionally he has appeared at The Shakespeare Theatre in Washington D.C., Hartford Stage, Alley Theatre,

Wilma Theatre, Huntington Theatre, Dallas Theatre Center (Rabin Award for *Twelfth Night*), Actors Theatre of Louisville, Long Wharf and The Royal National Theatre of Great Britain. Film and TV credits include *Unholy*, *Private Parts*, *Clockers*, *Hackers*, *Third Watch*, *The Sopranos*, *Law & Order* and *Law & Order SVU*. Richard is a graduate of the High School of Performing Arts and the Juilliard Theater Center.

PRODUCTION TEAM

Warner Shook (Director) returns to ACT where he directed *Enchanted April* and Edward Albee's *The Goat, or Who is Sylvia?*, which he re-staged at the Mark Taper Forum in Los Angeles. Other Seattle directing highlights include *Angels in America*, *Three Tall Women*, *Who's Afraid of Virginia Woolf?*, *The Little Foxes*, *Private Lives*, *Love! Valour! Compassion!*, *The Last Night of Ballyhoo* and *The Royal Family* all at the Intiman Theatre where he served as Artistic Director from 1993-2000. He also directed the world premiere of *The Kentucky Cycle* plus the subsequent productions of the six-hour epic at the Mark Taper Forum, The Kennedy Center and on Broadway at the Royale Theatre. Last year Mr. Shook directed two benefit performances of Peter Shaffer's *Lettice and Lovage* in New York with Marian Seldes and Dana Ivey and in Los Angeles starring Angela Lansbury. Most recently he directed the world premiere of Gore Vidal's *On the March to the Sea* at Duke University with Chris Noth, Michael Learned, Charles Durning and Richard Easton. Other regional theatre credits include South Coast Repertory, the Old Globe, the Long Wharf, Hartford Stage, American Conservatory Theatre and Oregon Shakespeare Festival.

Robert A. Dahlstrom (Scenic Designer) is a Seattle based designer whose resume includes many productions for Seattle Opera, Intiman, Seattle Repertory Theatre, and ACT – most recently last season's *Enchanted April* and, earlier, *Omnium-Gatherum*. Elsewhere in the United States his work has been seen at San Diego's Old Globe, San Jose Repertory, Sacramento Theatre Company, ACT San Francisco, ART Cambridge, Long Wharf Theatre, Alliance Theatre Atlanta, and Asolo Theatre in Sarasota. In Europe he has collaborated with Den Nationale Scene, Bergen; The Royal Opera, Copenhagen; The Grand Theatre, Geneva; Opera Decentralise, Neuchatel; and International Theatre Center, Moscow. Dahlstrom is head of the MFA Design Program at the University of Washington's School of Drama.

Frances Kenny (Costume Designer) began her career in the fashion industry and fell in love with theatre costume design when returning to the University of Oregon to study art history and art. Her work was most recently seen at ACT in last season's *Enchanted April* and, earlier, *The Goat, or Who is Sylvia?*. Additional work has been seen locally at the Intiman Theatre, Seattle Rep, Seattle Children's Theatre, On the Boards, House of Dames, Empty Space, and The Pat Graney Dance Company. Regionally, she has designed for Denver Center Theatre Company, Mark Taper Forum, Honolulu Theatre for Youth, The Long Wharf Theatre, San Jose Rep, The LaJolla Playhouse, The Arizona Theatre Company, Actor's Theatre of Louisville and on Broadway. When not working in the theatre, Frances styles wardrobe for local and national commercials, photo shoots and corporate media.

Mary Louise Geiger (Lighting Designer) is very pleased to return to ACT Theatre where she has designed *Enchanted April*, *The Goat, or Who is Sylvia?*, *Polish Joke*, *Later Life*, and *Betty the Yeti*. In Seattle she has designed many shows including *Man of La Mancha* at the Village Theatre, *Nickel and Dimed* and *The Dying Gaul* at Intiman, and other shows for Book-It, Seattle Repertory Theatre and Seattle Children's Theatre. She has designed lighting at many regional theatres all over the country including the Alley Theatre, Actor's Theatre of Louisville, Berkeley Repertory Theatre, GeVa Theatre, Portland Center Stage, Virginia Stage Company, Repertory Theatre of Louisville, Mark Taper Forum, New Mexico Repertory Theatre, Pioneer Theatre, Portland Stage Company, and Playmaker's Repertory Company where she is an Associated Artist. Since moving

(continued)

PRODUCTION TEAM

back to New York, she has worked on many projects at off-Broadway venues including *Afterbirth: The Return of Kathy* and *Mo* at Second Stage, *Mabou Mines' Doll House* at St. Ann's, *Eight Days (Backwards)* at the Vineyard Theatre, *The Mystery of Attraction* (Worth St. Theatre); *Two Little Indians* (Here); *Tongue of a Bird* (New York Shakespeare Festival), *A Doll House* (NYTW Workshop), *The Bacchae: Torn to Pieces* (LaMaMa Etc), *The Triangle Factor Fire Project*, *Long Island Sound* (The Actor's Company Theatre). Mary Louise is a graduate of the Yale School of Drama, and is Head of Lighting in the Department of Design for Stage and Film at NYU's Tisch School of the Arts.

Jim Ragland (Composer and Sound Designer) has composed music and/or designed sound for over 100 productions in Seattle and around the country since the mid-80s. At ACT, his credits include *Fuddy Meers*, *Our Country's Good*, *An American Comedy*, *Trust and Happenstance*; at Intiman: *The Kentucky Cycle*, *Angels in America*, *Betrayal*, *Faith Healer*, *The Royal Family*, *Hamlet*, and *Molly Sweeney*; at Seattle Rep: *Seven Guitars*, *Beauty Queen of Leenane* and *Julius Caesar*; Empty Space: *In Perpetuity Throughout the Universe*, *The Overgrown Path*, *The Rocky Horror Show*, *Etta Jenks*, *Gloria Duplex* and *Don Juan*; at Seattle Children's Theater: *Alice and Wonderland* and *Portrait, Wind and Chair*; at The Group: *Marisol* and *Split Second*, and at New City Theater: *The Unseen Hand*, *The Tooth of Crime*, *In The Fairy Garden*, *Limbo Tales*, *Pilgrims of the Night* and *Angel City*; for Nikki Appino and House of Dames: *Sub Rosa* and *Djin*. He performed his score for *The Kentucky Cycle* on Broadway, and has also worked at Berkeley Rep, Mark Taper Forum in Los Angeles, The Organic Theater in Chicago, Hartford Stage in Connecticut, Alley Theater in Houston and Dallas Theater Center. Jim performs and records as a singer, songwriter and guitarist under the name Slim Chanse. He can be seen at The Sunset on July 5 with his band The Fabulous Failures. Jim teaches at Seattle University.

Anne Kearson (Stage Manager) is pleased to be a part of ACT's 2005 season, her 8th. Earlier this year she stage managed *The Woman in Black*. Last season she stage managed *A Christmas Carol*, *Good Boys* and *Enchanted April*. Other favorites from past seasons include Edward Albee's *The Goat, or Who is Sylvia?*, *The Education of Randy Newman*, *Big Love*, *Side Man* and *Violet*. Locally she has worked at The 5th Avenue Theatre, most recently stage managing *Miss Saigon*, as well as at Seattle Repertory Theatre and Tacoma Actors Guild. Other regional credits include five seasons with South Coast Repertory, five seasons with Shakespeare Santa Cruz and two seasons with the Utah Shakespearean Festival. Anne's great passions are her husband, Brian, her three children, Rebecca, Max, and Olivia Rose, and her 38-foot sailboat, Aleeska. Anne is proud to be the third generation of Kearsons in the entertainment industry.

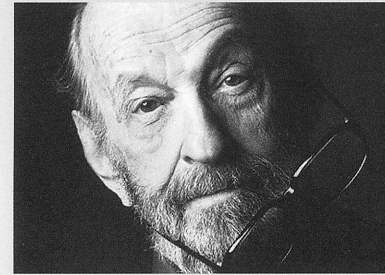
ACT OPERATES UNDER
AGREEMENTS WITH
THE FOLLOWING:



ssdc
The Director is a member of the Society of
Stage Directors and Choreographers, Inc.,
an independent national labor union.



ABOUT THE PLAYWRIGHT



Garson Kanin (Playwright) worked as an actor in the theatre and as a director and producer on Broadway and in Hollywood, but he is best known as a writer. During the Great Depression he dropped out of high school to help support his family, working as a musician and later as a comedian. He attended the American Academy of Dramatic Arts from 1932 – 1933 and briefly worked as an actor on Broadway following his studies. Kanin became

an assistant to Broadway director, George Abbott in 1935, then joined Samuel Goldwyn's production staff in Hollywood in 1937, but left for RKO at the end of one year, frustrated at not having been given any directing assignments by Mr. Goldwyn. At RKO he directed several films, including, *The Great Man Votes* in 1939 and *Tom, Dick, and Harry* in 1941, but he was continually frustrated by the lack of control he had over his films under the studio system, a frustration which continued throughout his career. When drafted during World War II he made documentary films for the War Information and Emergency Manpower offices. One of them, *The True Glory* (1945), won an Academy Award for Best Documentary. During the war years Kanin began writing stories and plays as well. After the war he directed several plays on Broadway, including his own *Born Yesterday* in 1946, for which he received the Donaldson Award for best first play of the season and best director of the season, and which he later adapted for the screen. Kanin collaborated on four successful screenplays with his wife, Ruth Gordon, including *Adam's Rib* (1949) and *Pat and Mike* (1952) starring Katherine Hepburn and Spencer Tracy. The writing team of Kanin and Gordon was never under contract to any Hollywood studio, preferring the freedom to write on their own and to sell their work individually to interested Hollywood studios.

Kanin's work both as a writer and director, can be characterized by his lifelong commitment to creative choice and selection of material which supported his personal values. In an interview in 1981, Kanin stressed the importance of self-employment for artists and other creative individuals to create a genuine product. "... it's difficult to do personal, creative, meaningful work as an employee ... there are always certain requirements and somebody always has to OK what you do. Having had that lesson early on in life, I have attempted insofar as it was possible not to be employed, but to employ myself."

Garson Kanin died in 1999 at age 87.

NOTES ON THE PRODUCTION

“When you live in Washington, it’s enough to break your heart. You see a perfect piece of machinery – the democratic structure – and somebody’s always tampering with it and trying to make it hit the jackpot.”

PAUL VERRALL IN
BORN YESTERDAY

Contributed by Anita Montgomery, Literary Associate
& Education Director and Sarah Guthu, Artistic Intern

For today’s audiences, Kanin’s government villains are admittedly small-time crooks. In comparison with scandals that have rocked recent administrations, Harry Brock’s shenanigans are laughable – yet the issues Kanin takes with Washington, in his day, proved incredibly prescient.

In 1946, military aide Harry Vaughn stained the Truman administration when his acceptance of bribes was exposed. In 1947, Senator Arthur Vandenberg told Truman to begin “scaring the hell out of the country” in order to win support for containment policies from a war-weary nation, laying groundwork for McCarthy’s infamous rise in the 50’s. Truman demanded Attorney General J. Howard McGrath’s resignation in 1952 for his suspect dealings and

attempts to thwart investigations made into his affairs. Soon after, the Reconstruction Finance Corporation’s favoritism came to light, causing the Depression-Era lending organization to be shut down. Kanin’s anticipation of governmental misbehavior continues to resonate today, where scandals of far greater proportions have become expected rather than shocking.

However, despite his perceptive anticipation of governmental misdealings, Kanin remains a strong supporter of the democratic system of government, apparent in Paul’s education of Billie Dawn:

PAUL. Well, look – when I say ‘manifesto’, I mean the set of rules and ideals and – principles and hopes on which the United States is based.

BILLIE. And you think it’s turning yellow?

PAUL. Well, yes. I think that a lot of the original inspiration’s been neglected – and forgotten.

BILLIE. And that’s bad?

PAUL. And that’s bad.

Kanin’s belief in the democratic system shines through Paul Verrall’s idealistic devotion to the original conception of America as a democratic state. In an era of Enron, Tyco and Martha Stewart corporate scandals, the misconduct of various politicians such as Tom DeLay, Jim West and Gary Hart and battles within the administration,

NOTES ON THE PRODUCTION

Kanin’s values still ring true, a timely reminder of the worth and responsibility of the individual.

BILLIE. This country with its institutions belongs to the people who inhibit it!

PAUL. – inhabit!

BILLIE. – inhabit it!

NOTE

In 1946, the *New Republic* was a liberal newspaper.

AMERICA’S OBSESSION WITH BLONDES

From Mary Pickford, often considered Hollywood’s first blonde superstar, known for her wide-eyed, childlike characters, to Reese Witherspoon of *Legally Blonde* fame, America is obsessed and besotted with the phenomenon of the not-so-dumb blonde.

Billie Dawn, the gloriously ditzzy heroine of Garson Kanin’s *Born Yesterday* is one of the most loveable and sublime examples of the comedic, flaxen haired bombshell. An uneducated, sexy chorus girl with a limited-yet-colorful vocabulary, a heart of gold and an uncanny ability to see and speak the truth, Billie typifies two of America’s most enduring values: that of the essentially good and honest citizen and the iconic ideal of American beauty.

Garson Kanin created the incomparable Billie Dawn from his collective experience working with some of Hollywood’s most memorable sirens. His wonderfully funny and informative book, *Hollywood*, features several big screen sirens, including Carole Lombard, with whom Kanin had this conversation on the set of *They Knew What They Wanted*, which he directed in 1940.

“Don’t be too hard on me,” Carole said one day, when we were having difficulty achieving the necessary effect. “I’m pretty tired. I’m getting on, you know.”

“Getting on, f’God’s sake. You’re what?” I asked. “Thirty-four? Thirty-five?”

“Why you son of a bitch no good dirty bastard,” she said. “Thirty-one. I’m thirty-one.”

“You’re thirty-two,” I said.

“Oh, you know that, huh?”

“Certainly. I know all about you.”

“So, if you knew I was thirty-two, why did you say thirty-four?”

“I wonder that myself, Carole.”

“I know why,” she said. “It’s because you’re nothing but a goddam – man.”

BOARD OF TRUSTEES

ACT BOARD OF TRUSTEES

Gregory A. Falls, *Founding Director*
Philip M. Condit, *Chairman*
John C. Siegler, *President*
Elise Fortin, *Vice President*
Bradley C. Fowler, *Vice President*
Scott F. Wilson, *Treasurer*
Kristin G. Olson, *Secretary*
Walter Walkinshaw, *Founding Secretary*

Dr. Ellsworth C. Alvord, Jr.
Erich D. Andersen
Joan D. Barokas
James H. Bromley, Jr.
Jerry A. Dark
Daniel D. Ederer
Jeannie M. Falls
Frank G. Fleetham
James A. King, Jr.
Jonathan D. Klein
Kevin J. Klustner
Jill L. Mogen
Gloria A. Moses
F. Lauren Neiswender
Alan J. Rappoport
William J. Ruckelshaus
Evan L. Schwab
Denise L. Seavitt
Debra A. Somberg
George V. Willoughby
Teresa E. Yueh

Arts Fund Board Interns

Daniel Alexander
Todd Barker

ACT ADVISORY COUNCIL

Sheena R. Aebig
Aubrey Davis
Jean Burch Falls
John H. Faris
Carolyn H. Grinstein
Sara Comings Hoppin
C. David Hughbanks
Katherine Ann Janeway
Keith Larson
Jane W. Lyons
Nadine H. Murray
Douglas E. Norberg
Donald B. Paterson
Eric Pettigrew
Pamela Powers
Katherine L. Raff
Brooks G. Ragen
Catherine Roach
Jo Anne Rosen
Sam Rubinstein
David E. Skinner
Dr. Robert Willkens
David E. Wyman, Jr.
Jane H. Yerkes

Emeritus Council

Richard C. Clotfelder
P. Cameron DeVore
Mrs. Walter E. Schoenfeld
Marvel Stewart

ACT FOUNDATION

Philip M. Condit, *Chairman*
Katherine L. Raff, *President*
Dr. Ellsworth C. Alvord, Jr., *Vice President*
Kermit Anderson, *Secretary*
Donald B. Paterson, *Treasurer*
Lawton Humphrey
Catherine Roach
John C. Siegler

ACT THEATRE ENDOWMENT FUND DONORS

Buster & Nancy Alvord
Katharyn Alvord Gerlich
Becky & Jack Benaroya
Charles Blumenfeld & Karla Axell
Bruce & Dawn Goto
William Randolph Hearst Endowed Fund
for Education & Outreach Programs
Kreielsheimer Remainder Fund

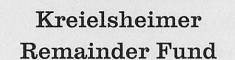
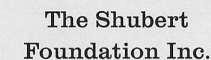
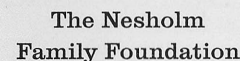
Katherine & Douglass Raff
Herman & Faye Sarkowsky
David E. & Catherine E. Skinner
Kayla Skinner
Estate of Stuart Smailes
Sally Pence
The Peg & Rick Young Foundation

ACT THEATRE FIFTH DECADE FUND DONORS

The Paul G. Allen Family Foundation
Philip Condit & Geda Maso Condit
Linda & Brad Fowler
Bill & Melinda Gates Foundation
Glaser Foundation
Katherine Ann Janeway & H.S. Wright III
Microsoft

Nesholm Family Foundation
Northern Trust Bank
Gian-Carlo & Eulalie Scandiuizzi
David E. & Catherine E. Skinner
Howard S. Wright Family Foundation,
in honor of Howard S. Wright

ONGOING SUPPORT



INDIVIDUAL DONORS

Diamond Benefactors

\$100,000 and above

Buster & Nancy Alvord
Katharyn Alvord Gerlich
Sam & Gladys Rubinstein
1 Anonymous

Platinum Benefactors

\$50,000 - \$99,999

1 Anonymous

Gold Benefactors

\$25,000 - \$49,999

1 Anonymous

Silver Benefactors

\$10,000 - \$24,999

Sheena Aebig & Eric Taylor
Allan & Anne Affleck
Richard & Nancy Alvord
Joan & Larry Barokas
Daniel D. Ederer &
Takayo Minakami
Jean Burch Falls
Linda & Brad Fowler
Ellen & William Hazzard
Katherine Ann Jazaway &
H.S. Wright III
Debbie & Jonathan Klein
Gloria & David Moses
The Nordhoff Family
Eric Overmyer & Ellen McElduff
Mr. & Mrs. James C. Pigott
Katherine & Douglass Raff
John Siegler & Alexandra Read
Gian-Carlo & Eulalie Scandiuzzi
David & Joyce Veterane
Virginia & Bagley Wright
2 Anonymous

Grand Benefactors

\$7,500 - \$9,999

Jerry Dark & Monty Collins
Erich & Anne Read-Andersen
Christopher & Ginny Rice
1 Anonymous

Premier Benefactors

\$5,000 - \$7,499

Mrs. Frederick Ayer
Carla & Thomas Bucknell

Allan & Nora Davis
Deborah Fialkow
Betsy & Charles Fitzgerald
Jill Mogen
Nadine & John Murray
Douglas & Nancy Norberg
David & Shirley Urdal

Producers

\$2,500 - \$4,999

Richard & Constance Albrecht
Bob & Clodagh Ash
Jim Bromley & Joan Hsiao
Chris Curry
James & Sandy Duncan
Elise Fortin & Richard Keck
George & Kathleen Kosmos
Catherine & Barry McConnell
Donald & Melissa Nielsen
Charles & Eleanor Nolan
Linda & George Ojemann
Brooks & Suzanne Ragen
Jo Anne & Donald Rosen
Evan L. Schwab
David E. & Catherine E. Skinner
Debra A. Somberg
Walter & Jean Walkinshaw
George & Colleen Willoughby
2 Anonymous

Directors

\$1,000 - \$2,499

David & Sheila Aas
Jane & Don Abel
Harold & Helena Aebig
Charles & Lynette Ainslie
John Akin & Mary Stevens
Jerry Anches
Jennifer Anderson
Kermit Anderson
Susan & Lauren Anstead
Paul Archer
Peter & Fran Bigelow
Charles Blumenfeld & Karla Axell
Margaret & Bruce Bradburn
Jon & Bobbe Bridge
Timothy & Andrea Burrows
Dr. William Calvin &
Dr. Katherine Graubard
Paul Canniff
Matthew Clapp

Linda & Randy Clark
Judith & Robert Cline
Jim & Jan Coleman
Jane & David R. Davis
James A. Degel &
Jeanne E. Berwick
Patrick J. & Lanie Dineen
Jeannie Falls
Jed Fife
Frank Fleetham & Dale Scofield
Cathryn Fortune & John Shimer
Dean Gardner
Natalie Gendler
Robert & Eileen Gilman
Bruce & Dawn Goto
Benson & Pamela Harer
Jim & Bette Harvey
James & Barbara Heavey
Mr. & Mrs. Richard Hedreen
Mrs. George M. Hellyer
Sara Comings Hoppin
Gary & Parul Houlahan
Judith Jesiolowski &
David Thompson
Joseph Jordan
Jeffrey D. Kephart &
Amy S. Faherty
James & Kimberly King
Keith & Joan Larson
Sharon Lee
Jane W. & James A. Lyons
Pam & Curt Miller
Bill & Mary Ann Mundy
Lauren & Philip Neiswender
Annie & Judy Ness
Richard & Christa Nielsen
Kristin Olson
Angela Owens
Laird Patterson
Valerie Payne
Douglas James Perry
Mary Pigott & Roger Giesecke
Pamela & Gilbert Powers
Andrea & Alan Rabinowitz
Alan & Barbara Rappoport
Harley Rees
Lance & Lucinda Richmond
H. Stewart Ross
William J. Ruckelshaus
Richard Ruvelson

Kenneth Sanchez & Larry Anderson
Barbara & David Sando
Gilbert Scherer &
Marlyn Friedlander
Randolph & Lynn Beaty Sealey
Patrick M. & Kimberley Shanahan
M. Darrel & Barbara Sharrard
Warner Shook
Debra Sinick & David Ballenger
D.P. & Janice VanBlaricom
Vijay & Sita Vashee
Jean Viereck & Robert Leventhal
Eric Weber
Roberta Weeks
Kenneth Weiner &
Katherine Fletcher
Brian Wentz
Judith A. Whetzel
The Whitsitt Family
Robert & Marjory Willkens

Alton & Doreen Willoughby
Scott & Shirley Wilson
Howard & Barbara Wollner
David & Sally Wright
Ann P. Wyckoff
Jane & Leonard Yerkes
Shari Zanetti & Colin Murphy
Gerard & Pamela Zytznicki
2 Anonymous

Designers

\$500 - \$999

damucci
Ledes Adams
B.R. Aigner
Bob & Tina Alexander
Michael D. & Marjorie Alhadeff
Nancy Alvarez
Robert M. Arnold
Joe & Lee Ashley
Pam Becker & Jim Roberts
Mike & Marie Bender
Valentin Berger & Jerry North
Laurie Besteman &
Jack Lauderbaugh
Cleve & Judith Borth
Paul & Paula Butzi
Corinne A. Campbell
Susan C. Campbell
Charles & Diana Carey
Kate Carruthers
Margaret & Russ Casson
Donald Cavanaugh
R.E. Chris Christiansen
Hugh & Suzanne Clark
Sue & Robert Collett
George & Carolyn Cox
Stan & Carol Crow
Brent Cummings & Jon Miller
John & Leslee Currie
Patricia Daniels & Bill Kuhn
Daniel Dierks & Sally Avenson
Lynne & Robert Dowdy
Betty M. Ederer
Rick Freedman
Richard & Mary Beth Gemperle
Martin Gibbins & Paula Crockett
James & Sherry Gill
Bruce & Peggy Gladner
Cynthia Gossett & Derek Storm
Jim & Rhonda Greer
Carolyn & Gerald Grinstein
Cheryl Hafer
Kevin Hafer
Irene &
Hana Hamburger Ttee
Lawrence & Hylton Hard
Margot & Paul Hightower
Jon & D'Linda Highum
Dinah Hutchinson
Dr. & Mrs. Joseph Iacolucci
Linda & Ted Johnson
Roger Katz & Karolynn Flynn
Lura & David Kerschner
Michael G. King
Greg Kucera & Larry Yocom
George & Linda Lamb
David Landes & Karen Oatey
Susan Leavitt & William Block
Thelma Lehmann
Mark Levine
Andrea & Bruce Lorig
Greg Lowney
Cherie Luckhurst
Charles & Aileen Mangham
Bruce McCaw
Paul McDaniel, PNJ & Associates
Tiffany McDermott &
Craig Blackmon
Al, Connie, Katie &
Jenny McEachern
Steven McLamb &
Catherine Kalita McLamb
Joy McNichols
John & Gail Mensher
Mina Miller & David Sabritt
Helen Modie
Lee & Sallie Morris
James Nichols
Amy & Bruce Niermeyer
Chris & B.J. Ohlweiler
Chris, Sherry, & Adam Olsen
Marvin Parsons & Jeanne Sheldon
Judy Pigott
John & Susan Pohl
Linda Quirk
Eloise & Glen Rice, M.D.
Steve & Fredrica Rice
Karen Rich
Catherine & Thurston Roach
Paula Rose
Evelyn Rozner & Matt Griffin
Ron Schaevitz
Robert Schenkkan &
Maria Headley
Bev & Donald Schmidt
Esther & Walter Schoenfeld
Chris & Bev Schubert
Stephen & Julie Scofield
Karen & Patrick Scott
Mike Scully
Steven & Kathleen Shaughnessy
Richard Simkins
Anne & Langdon Simons
Johon & Rose Southall
Jolanta & Ronald Spaulding

Sonia Spear
Paul & Gretchen Steele
Carol Studer
Kerry Sturgill
Richard & Diane Sugimura
Lore & Henry Tenckhoff
Mark & Arlene Tiberghien
Susan Trapnell & Erik Muller
Doug & Maggie Walker
Alison & Warren Wilson
Frank Woodruff & Jan Agosti
5 Anonymous

Actors

\$250 - \$499

Stephanie & Michael Abbott
Bonni & Irv Alpert
Sarah & Robert Alsdorf
Karen F. Aven
Jerry & Judy Baker
Dr. & Mrs. John Baldwin
John & Janet Bauer
Luann & Irving Bertram
Marilyn J. Bierman
Teresa Bigelow
Louise & Jim Biggs
George & Mary Birchfield
David & Inez Black
J. Ray & Priscilla J. Bowen
Julie & Peter Brame
Virginia & Thomas Brewer
Alan & June Brockmeier
James & Donna Brudvik
Carol & Jonathan Buchter
Nancy Buckland & John Searce
Steve & Donna Burnstead
Henry & Olga Butler
John & Arlene Carpenter
Kent & Barbara Chaplin
Royce & Aggie Church
Jack Clay
Cathy & Greg Cobb
John & Wendy Cole-Deardoff
Theodore & Patricia Collins
Judith & Thomas Connor
Michael & Tamara Corliss
Hope A. Curtis
Barb & Phil Cutler
Susanne & Steve Daley
Ruth Darden
Muriel Bach Diamond
Margaret & Stanley Diddams
Paula Diehr & Frank Hughes
Sharon Diel
Darrel & Nancy Dochow
Pamela & Sturges Dorrance
Wayne F. Doucette
Mike & Roberta Doyle
Marc & Beth Droppert
Bruce Eckfeldt & Lisa Dawson
Steve & Monique Elfman
Anne Ellington
Margo & Rodger Fagerholm
Eric & Polly Feigl
Richard, Angela & Ian Finlay
K. Denise Fischer-Fortier &
James M. Fortier
Merlyn Flakus
Mary & Doug Fleming
Alice Forsythe
Fred Fox
Albert & Thelma Franco
Judith L. Frey
Phillip & Noreen Frink
Pam Gates & Cliff Solomon
Pat Gervais
Boyd & Ann Givan
Karen & Alvin Gosney
Jeff & Kelly Greene
Theodore & Sandra Greenlee
Keith Grinstein
Helen & Max Gurvich
Lewis & Elizabeth Hale
Erik & Evelyn Haroldson
John & Marilyn Harris
Ernest & Mary Lou Hartland
Sharon & David Hartman
Peter & Diana Hartwell
Geraldine Hashisaki &
Frank Tubridy
Michele & David Hasson
Nevil & Carol Hermer
John & Michelle Hersman
Vaughn Himes
Gene & Sigrid Hokanson
Susan & Philip Hubbard
Laura Ingham
Ann Janes-Waller & Fletch Waller
Eric & Julia Johnson
Lew & Sonia Johnson
William D. Jones, DDS
Kirk Kassner &
Carol Scott-Kassner
Owen King & Joan Thacker
Ken & Sasa Kirkpatrick
Weldon Ihrig & Susan Knox

2004-2005 ANNUAL PRODUCING FUND

As of May 5, 2005

Kikue Kono
Jane & Peter Lamb
Sharon Lamm
Mary Lou LaPierre
Michele & Jim Lechner
Charles Legault & Jan Powell
Lindsey Family
Steven B. & Anne W. Lipner
Larry & Phyllis Loeb
Kenneth & Peggy Long
Mr. & Mrs. E.E. Loyd, Jr.
Lynch Resources
C. Gilbert Lynn
Bill & Holly Marklyn
Leslie & David Mattson
Anne V. McClellan &
Roger M. Tolbert
Bruce & Coco McDougall
Will & Karen McMahan
Theresa Meditch
Michael & Sarajane Milder
Col. Norman D. Miller
Tom & Nancy Miller
Mark & Susan Minerich
Chuck & Darlene Mitchell
Stan Mitchell
Clyde Moore & Jean Garber
Annette & Gordon Mumford
Jerry & Marcia Nagae
Sarah Navarre
Roland & Deanna Nelson
Linda & Paul Niebanck
Craig & Deanna Norsen
N. Michael Novick
Virgil J. Olson
Don & Helen Owens
Bruce & Cynthia Parks
Linda Paris
Dan & Brenda Paull
Art & Linda Pederson
Ed & Carol Perrin
Mark & Barbara Phillips
Beth Pitt
Susan Porterfield
Lucy & Herb Pruzan
Richard Rafoth
Charles & Doris Ray
Cecilia Paul & Harry Reinert
Rebecca Robar & Gary Swenson
Stephanie Ryan & Craig Fleck
Sue Anne Sanders
Judy Sarkisian
Don Saunders
Joe & Judy Schocken
Evelyn Schutt
Richard & Helen Seiler
Mr. & Mrs. Stan Sidell
Bill & Becky Smead
Kathleen Sneden-Cook
Maya Sonnenberg &
John C. Robinson
Judy Soferman &
Marc Rosenshein
David Spellman
Janet & Sam Stanley
Garth & Drella Stein
Natalie Stien & George Miller
Kim Stindt & Mark Heilala

Margaret Stoner &
Robert Jacobsen
Mr. & Mrs. Robert B. Strong
James Stroupe
Norman H. & M. Lynn Swick
Francis Timlin & Dean Speer
Janet Upjohn
Allan & Sandra Voves
Dennis Wajda & Chantal Stevens
Mary & Findlay Wallace
Toby & Linda Warson
Kimberly Waters
Carol & Jeff Waymack
Leora Wheeler
Mark & Terri Whidby
Daryl & Maridee Wildermuth
Clyde & Kathy Wilson
Douglas L. Wilson &
Kathleen Makielski
Marianne & Jim Wolff
Thomas Wood &
Milicent Whinston
Saundra Willis
Vasil Zolotov
7 Anonymous

Stage Crew \$100 - \$249

Diana & Warren Aakervik
Craig & Nancy Abramson
Caren A. Adams
Diana Ahern & Red Gibbons
William Alexander & Linda Baker
Doreen C. & Joseph S. Alhadeff
David & Gay Allais
Inez Allan
Frank & Nola Allen
Susan & Richard Alvord
David & Connie Anastasi
Connie Anderson
Susan R. Anderson
Gilbert & Mary Jane Anderson
Julie Anderson
Julian & Eva Ansell
Karen & Ronald Auer
Paul Axelrod
Garrison Ayars
Diane & Jean-Loup Baer
Carrie A. Bailey
Dr. & Mrs. John Baldwin
Nancy & Bill Baran-Mickle
William & Marjory Barbee
Cleo Barber
Kathy Barker
Thomas Barkewitz
Mary Bass
Shawn Baz & Ellen Bezona
David Morton &
Sheridan Beauman
Kenneth Bechmann & Cheryl Cox
Yvonne & Thomas Belshaw
Kathleen Bemis & Don Blair
Shirley Reith Bennett
Lora Bennett & Greg Anacker
June & Mick Betsch
Dick Biles
Patricia Blakely
Don & Kathy Bliss
Tim & Erica Blue

Barbara Blywise, Psychotherapist
Libby Boarstad
Charles Bodenstab &
Pamela Nichols
Joseph E. Boling
Russell Borgmann & Andrea Sato
Melissa Borders
Jerome & Barbara Bosley
Ed & Betty Bottler
Rita & Philip Boyer
Gordon A. & Jacklyn Bradley
Kristi Branch & James Moore
Kimberly Brangwin
Joseph & Helen Breed
Robert & Victor Bremson
David & Julia Brewer
Joyce S. Brewster
Barry Briggs
Robert Briscoe
Jonathan & Catherine Britell
Stefanie & Steven Brown
Judge & Mrs. Robert J. Bryan
Dale & Franja Bryant
Gail & Alfred Bryman
Anne Buchinski & Marc Coltrera
Tove Burhen
Carl Bunje
Carol & John Burns
Les & Peggy Bussman
Janet I. Butler
Julie & Jay Byram
Sheila Callahan & Ken Clay
John Van Bronkhorst &
Judith Callahan
Diane E. Calvert
Karen M. Campbell
Linda Capeluto
Arthur Caputo
Deborah & Peter Card
Gwen & Stan Carlson
Tom Carlson & Dale Alekel
Joyce & Harold Carr
Reece Carson
Steve & Midge Carstensen
Ed & Lisa Carter
Mary Casey-Goldstein &
Steve Goldstein
Cesar Castro
Jim & Peggy Champin
Peter & Alice Chang
Anthony L.T. Chen & Shin-Ping Tu
Richard M. &
Miklean R. Couinard
Sarah & Stephen Church
Bob & Amanda Clark
Greta Climer & Kevin Kennedy
Mary M. Clise
Jody & Lawrence Clovis
Virginia Coburn
Patrick & Jerri Cohen
Zan & Stephen Collier
Dick Conway & Susan Williams
Ann W. Cook
Carol & Clayton Cook
Dr. & Mrs. James Copeland
Consuelo & Gary Corbett
Mike & Pam Courtnage
John Cramer & Suzanne Poppema

Wayne & Jean Crill
Joyce Crosby
Virginia & Brian Crynes
Robert & Linda Dahl
Fred Diamondstone &
Mary Monschein
Barbara & Theodore Daniels
Dan & Esther Darrow
Pamela David
Carol Anne Davidson
Aubrey & Henrietta Davis
Richard & Nancy Davis
Col. James & Mary Ann Deal
James Dean
Don & Kathy Decaprio
Steve & Sibby DeForest
Dottie Delaney
Jodie Demuth
Judith L. Dickinson
Robert & Kristi Dierks
Steven Dietz
Brendan & Kim Dixon
John & Julie Doces
Anita P. Dougherty
Lindsay Downs & Ed Lazowska
Luella & Harold Drevecky
Kathy Dugaw
Dianne Dusault
Vasiliki Dwyer
Louise Eagle
Doris & Robert Eckert
Beverly & Thomas Eckley
Lori Eickelberg
Gail & Shmuel El-Ad
Victoria Elijah
James R. Ellis
Herb & Alberta Ellison
Rae Ann Engdahl
Bob & Kathy Erickson
Deborah & Dale Erickson
John & Marilyn Erickson
Susan & Dave Erland
Constance Euerle
Joanne Euster
Kimberly Faucher
James & Gretchen Faulstich
Frank & DeAnn Feeman
Linda & Gary Feldman
Lyn & Paul Fenton
John & Mariley Ferens
Teresa Ferguson
Cynthia Ferrell
John & Linda Findlay
Alexander Fiskien
Hugh & Patricia Fitzgerald
Kerry & Dawn Fitzgibbons
Honorable Betty B. &
Robert L. Fletcher
Bruce Florsheim
Patrick & John Forman
Anne Foster & John Levesque
Jane Fox
Barbara R. & Robert M. Fryan, Jr.
Dick & Sharon Friel
Dr. Rick & Dorothy Fuhrman
Dick & Candice Fulton
Lucy Gaskill-Gaddis &
Terry Gaddis

2004-2005 ANNUAL PRODUCING FUND

As of May 5, 2005

Jane & Richard Gallagher
Roger & Kris Garratt
Sergey Genkin & Anna Nikolaeva
Peter & Catherine Gerber
Lynn Gerl & Richard Curdy
David & Anne Gilbert
Wilnot & Mary Gilland
Dennis & Evette Glauber
Mary Glynn
Tal & Carol Godding
Mark J. Gralia
Beatrice Granen
Mr. & Mrs. James C. Gray
James Greeng
Gretchen Greengo
Barbara & Curtis Greer
Sean & Bernadine Griffin
Wendy & James Griffin
Jan Griffith & Drew Fillipo
aret Griffiths
& Nancy Guppy
Jerry & Susan Haas
Linda Haas
Berthe Habib
Lowell Hagan
Dr. Shawn D. Hagen
James & Amanda Haines
Timothy Hale
Tom & Kathi Hamilton
Louise Kaputka
Francis & Margaret Kareken
Gail & David Karges
Paul Kassen
Sunny & Kirk Kaynor
Gail Kelley & Joan Noste
Laurie & David Kelly
Steven & Patricia Kessler
Randy Nolan & Michael Killoren
Jerry Kimball
Jonna Kincaid
Ed & Mimi Kirsch
P. Kishline
Margaret D. Kley
Allan & Mary Kollar
Kurt & Jill Kosty
Susan Kunimatsu & Gary Epstein
Jim & Jean Kunz
Karen & Mannie Laband
Charles Lacroix
Katherine Lagana
Chris Landes
Ms. Tamara Langton
Inge Larsen
Dennis Larson
Kevin & Melissa Larson
Mary Larson & Robert Lewis
Allan & Beth Las
Rhoda & Thomas Lawrence
Cheryl & Terry Lawrence
David & Catharine Lawson
Ashley Leach
Mary Reeves Leber
Lyn & Doug Lee
Patricia Lein
David & Linda Leisy
Virginia & Brian Lenker
Martha S. Lester
Michael & Nancy Lewars
Marianne Lewis & Stephen Bangs

Greg Home
Daniel D. Honermann
Paul & Diane Hostetler
Cynthia R. Howe
Rob Howell & Jackie Bardsley
Gary & Chris Huff
Randall & Jane Hummer
Earl & Mary Lou Hunt
Melissa Huther & Gordon Hof
Daniel & Kathleen Huxley
Catherine Iles
Wendy Jackson
Jon O. Jacobson, Ph.D
Stu & Sandy Jacobson
Ilga Jansons & Michael Dryfoos
Susan & Fred Jarrett
Reed & Denise Jarvis
Arthur Johnson
Bruce E.H. Johnson & Paige Miller
David B. Johnson
Carol & Bill Jolly
Benjamin F. Kalich
Anne Kao & Stephen Poteet
Clare Kapitani
Charles Kaplan
Dr. & Mrs. Charles Kaplan
H. David Kaplan
Louise Kaputka
Francis & Margaret Kareken
Gail & David Karges
Paul Kassen
Sunny & Kirk Kaynor
Gail Kelley & Joan Noste
Laurie & David Kelly
Steven & Patricia Kessler
Randy Nolan & Michael Killoren
Jerry Kimball
Jonna Kincaid
Ed & Mimi Kirsch
P. Kishline
Margaret D. Kley
Allan & Mary Kollar
Kurt & Jill Kosty
Susan Kunimatsu & Gary Epstein
Jim & Jean Kunz
Karen & Mannie Laband
Charles Lacroix
Katherine Lagana
Chris Landes
Ms. Tamara Langton
Inge Larsen
Dennis Larson
Kevin & Melissa Larson
Mary Larson & Robert Lewis
Allan & Beth Las
Rhoda & Thomas Lawrence
Cheryl & Terry Lawrence
David & Catharine Lawson
Ashley Leach
Mary Reeves Leber
Lyn & Doug Lee
Patricia Lein
David & Linda Leisy
Virginia & Brian Lenker
Martha S. Lester
Michael & Nancy Lewars
Marianne Lewis & Stephen Bangs

Bonnie Lewman
Kathleen Lindenbaum
Esther Littlejohn
Jim Lobsenz & Liz Choy
Karen & John Loeser
Fayne McCaffray Loew
Karen & Gerald Lorch
Sylvia Lucas
Dan & Cathy Lungren Family
H. James Lurie, MD
Gloria C. Luster
Mark P. Lutz
Mr. & Mrs. Stephen Lutz
Jocelyn Lyman
Christopher Madden
Patricia Magnafichi
Alice Mailoux
Jerry Malmo &
Marshall Livingston
Susan Mamlock
Paul & Vivienne Manheim
Janice Marsters
Tony Martello
Alvin Martin & Penny Bass
Paul & Mary Jo Martin
Robert & Verna Maruska
Linda & John Mason
William & Judith Matchett
Victoria Mathew & Andrew Tucker
Suzanne Matsen
George T. Mattson
Michael & Rosemary Mayo
Arthur Mazzola
William H. & Colleen M. McAleer
Pete McCormick &
Kathleen Albrecht
David & Janet McDonald
Joanne McElroy
Maureen McGee
Jim & Betty McKenzie
Rev. Dr. & Mrs.
Samuel B. McKinney
Jill & Joseph McKinstry
Don McLaren & Joanne Chase
Glen & Megan Merriwether
Geraldine Mertz
George L. Meshke
Mary Metastasio
Randy Smith & Sharon Metcalf
Karen Metro & Randy Comstock
Joan Meyer
Jane Meyer Brahm
Robert Michaels
Bruce & Erika Michels
Heath Miller
Gloria W. Milliken
Jerrold & Leslie Milstein
Susan & Michael Mise
Constance & Michael Mitchell
Dolores Mitchell & Jim Broman
H.R. Miyoshi
George & Betty Moering
Megan Moholt
Beth Moll
Donna Moniz
Rosalinda Monteros
Wesley Moore & Sandra Walker
Phoebe Ann & Malcolm A. Moore

Robert Moreland
Eileen & Richard Morris
Roger Morris
Diane Morrison & Joel Bradbury
Kathryn & Dan Mortensen
Harold & Susan Mozer
Barbara Mugford
Duane Muller & Sharon Leishman
Salvador Mungia
John & Faith Munson
Rob & Lee Murray
Robert Mustard
Grayson & Adrienne Myers
Tom & Ellie Naden
Ralph & Phyllis Nansen
John Naye
Charlotte & Robert Nelson
Joan Nelson
Marlene Nelson &
Curt Chenoweth
Mardi Newman
Karen Nims
Marie Nisbet
Arnold Nordisack
Charles & Cathy Novak
Mike & Julie O'Brien
Kenneth H. Olsen
Katherine & James Olson
Betty & Gordon Orians
Brenda Osterhaug & Scott March
Judith & Jay Donald Ostrow
Barb & Larry Otto
Roy C. & Patricia Page
Christine & Jerry Palmer
Janice & Richard Pankratz
Dr. Ruth Ann Parish
Dan & Johnette Pavarnick
Jennifer & Thomas Payne
Lenore Pearlman
Eriann Pearson
Susan Perkins
Daniel S. Perry
Mina & Phillip Person
Margaret L. Perthou-Taylor
Harold Peterson &
Marilyn Shelton
Karen Peterson
Greg & Peggy Petrie
Elaine & Robert Phelps
Marlene & Morris Piha
Ron Pinckney
Brian Placzek & Diana Leung
The Lomberg Family
Steve & Tonya Podradchik
Richard & Barbara Polovitch
William & Joan Potter
Michael & Elizabeth Pray
Michael Preble
Robin Prichard
Greg & Meghan Pursell
Darryn Quincey
Daniel & Barbara Radin
Joyce Radke
Kathy Raich & Dave Jones
Diane & Dale Ramerman
Gail Ingersoll Ransom
Paula Records
Jim & Laura Rehrmann

2004-2005 ANNUAL PRODUCING FUND

As of May 5, 2005

Denise & Stephen Reibman
Virginia Reilly
Peter & Debra Rettman
Rosemary & Roger Richert
Jonathan & Christina Ridgeway
Peg & Pete Rieder
Annemarie Riese
Ted & Teresa Rihn
Ed & Marjorie Ringness
Joan & Don Roberts
Bruce Robertson
Peggy Robertson
Tom & Christine Robertson
Merlin G. Rohrsen
Robert Anthony Romeo
Thomas Rook
Ron & Nadean Ross
Jim Royce
Ed Rubatino
Simeon & Adrienne Rubenstein
Bob & Dianne Russell
James & Lois Russo
Richard & Nancy Rust
William K. Rutledge, Jr.
M. Lynn Ryder Gross
Mary L. Robb
Jerry Sale & Rachel Klevitt
Pat & Dean Sampson
Dr. & Mrs. Werner E. Samson
Jerry & Carolyn Samuelson
Corey M. Sanders
Ingrid Sarapuu &
W. Michael Anderson
Stuart & Amy Scarff
Joseph Schaeffer
Ronald & Ruth Schaps
Stan & Frances Roth Schill
Tell Schreiber & Osa Bogren

Evan & Allyson Schrier
John & Katherine James
Schuitemaker
Jim Scott & Elaine Robin
Barry & Colleen Scovel
Claire & George Scranton
Audrey Seefeldt
Yvonne Seidler
Bill Setter
Barb Shaub
Jeff & Lynda Sherry
Kathryn Shields
Michael & Sheila Shilley
Dr. & Mrs. David B. Shurtleff
Uzma Siddiqi & Paul McKee
Susan & Stan Silberman
Peter Sill & Marcia Joslyn Sill
Goldie & Donald Silverman
Marya Silvernale & Preston Briggs
Alan & Sally Simmons
Marilyn & William Skelly
Arthur Skolnik
Robert & Nadine Skotheim
Sylvia Skratek
Teresa Smith
Karleen Snetsinger
Gregory L. Snider
Richard Spangenberg
Linda Barker Spear
Drs. Michael & Wendy Spekter
Carmen Spofford
Margaret Stanley &
Thomas Bleakney
Stephens Cowles Adventures
Alec & Jane Stevens
Louise Stonington
Louise & John Strander
Bill & Bobby Street
Gary & Becky Streitmatter

Elaine Stucker
Earl & Charlotte Sutherland
Linda & Paul Suzman
Tom Sykes & Sarah Thomas
Alexander & Lucy Sytman
Linda Talley & Ron Norris
Jeanine Tang Low & Terry D. Low
Judith & Eli Tangen
Bill & Pat Taylor
Catherine Taylor & Laurie Scullin
Richard Taylor & Miriam Kahn
G. M. Teichert
Dave & Kathy Tekolste Tempest
Robert & Marilyn Terwilliger
Dr. Horace Thuline &
Janice E. Tessin-Thuline
Michael Theobald
Dr. & Mrs. Joe Thomas
Mary Lou Thomas
Connie Thompson & Don Robert
Greg & Michele Thompson
Linda & John Thompson
Michael Thompson
Mr. & Mrs. Jerry Thonn
John Tilner
Art & Louise Torgerson
May Louise Torina
Betty Lou & Irwin Treiger
Heidi & Brian Tucker
Rae Tufts
Lorraine W. Vagner
Karl Valentine
Mary Lou Van Woerden
John & Susanne Vanderheyden
Tony Ventola
Bruno & Yvonne Vogele
Edmund & Jacquelyne
Von Allmen
Morris & Penny Wade

Tom & Kay Wallin
Stephanie & Leonard Warden
Judith & Mike Waring
Jane & Daniel Warner
V'ella Warren
Herbert & Cecelia Warrick
Judith Warshal & Wade Sowers
Ron & Peggy Watt
Joan Weber
Lee & Don Weber
Aaron & Susan Weholt
John & Sarah Weinberg
Lee & Stuart Weinstein
Morton & Judy Weisman
Jim & Sharron Welch
Jordan & Ronna Weltman
L. Wendy Wendland
Rory & Pravan Westberg
Elizabeth White
Randall Lee Whiteside &
Valerie Hamrick
Karen & Peter Wickstrand
Antoinette Wills
Holly & Gerald Wilson
Kevin Wilson & Emily Evans
Judy & Donald Wilson
Kristine & Patrick Wilson
Richard & Sally Wilson
Mike & Nancy Windus
Sarah W. Wing
Valerie Yackey & Bob Winsor
Barry & Peggy Witham
Rollie Wulff
Pat & Robert Wyman
Bethany Young
Marie R. Zobrist
53 Anonymous

2004-2005 ANNUAL PRODUCING FUND

As of May 5, 2005

CORPORATE & IN-KIND DONORS

\$100,000 or more

ArtsFund

\$50,000 - \$99,999

The Boeing Company
Continental Airlines

\$25,000 - \$49,999

Getty Images

\$10,000 - \$24,999

Milliman

\$5,000 - \$9,999

Commerce Bank of Washington
Harbor Properties
Pacific Place
Ray's Boathouse Catering
Seattle Homes & Lifestyles
The Starbucks Foundation

\$2,500 - \$4,999

Apulent, Ltd.
The Collins Group
Columbia Crest
Dragonfish Asian Café

Lisa Dupar Catering
Exterior Research & Design, LLC
Larry's Markets Catering
Catering by McCormick & Schmick's
Moby's Restaurant
Williams, Kastner & Gibbs PLLC

\$1,000 - \$2,499

R. David Adams Flowers
ArtsFund/Wells Fargo Cultural
Education Enhancement Fund
Bambuza

Bucknell Stehlik Sato & Stubner, LLP
Dilettante Chocloates
The Dorsey & Whitney Foundation
Gull Industries
Magazine 99
Northern Trust Bank
The Paramount Hotel, Seattle
Perkins Coie
Sellen Construction

\$500 - \$999

Alaska Distributors Co.
& Precept Brands
Bergevin Lane Vineyards

Glant Textiles Corporation
The Green Papaya
Joanie's Catering
Museum Quality Framing
Red Lion Hotel on Fifth
Avenue
Sweeney Conrad
Wineglass Cellars
Wright Runstad &
Company

\$250 - \$499

The Benson Hotel, Portland
Coast Plaza Hotel
& Suites, Vancouver
Gordon Biersch Brewery
Restaurant
Hedges Cellars
Prorobics/Gold's Gym
Yakima Cellars

FOUNDATION & GOVERNMENT DONORS

\$50,000 or more

The Paul G. Allen Family Foundation
PONCHO
The Shubert Foundation, Inc.

\$25,000 - \$49,999

Kreielsheimer Remainder Fund
Mayor's Office of Arts & Cultural Affairs
National Endowment for the Arts
Nesholm Family Foundation
The Seattle Foundation

\$10,000 - \$24,999

Norman Archibald Charitable Foundation
ACulture
West Foundation
Kongsgaard-Goldman Foundation
Washington State Arts Commission

\$5,000 - \$9,999

Hamilton Family Foundation
Horizons Foundation

\$2,500 - \$4,999

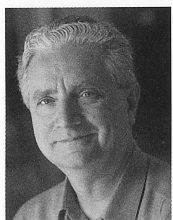
Fales Foundation Trust
Marsha & Jay Glazer Foundation
Schairer Revocable Trust
The Peg & Rick Young Foundation

\$1,000 - \$2,499

The E.K. & Lillian F. Bishop Foundation
The Clovis Foundation
The Chisholm Foundation

1001 4th Avenue 206.623.9649
www.RDavidAdams.com

EXECUTIVE STAFF



Kurt Beattie (Artistic Director) joined ACT in 2001 as Associate Artistic Director and was appointed Artistic Director in April of 2003. Kurt has been creating theatre for Puget Sound audiences for more than 30 years as both actor and director. During ACT's 2005 season Kurt directed *Bach at Leipzig* and will direct *Vincent in Brixton* and ACT's 30th annual production of Charles Dickens' *A Christmas Carol*. In 2004 he directed ACT productions of *Black Coffee*, *Alki* and the holiday classic, *A Christmas Carol*. Previously at ACT he has directed *A Moon for the Misbegotten*, *Fuddy Meers* and *Fully Committed*, as well as *Via Dolorosa* during ACT's 2000 Bullitt season.

Elsewhere he has directed *Things Being What They Are* and *Art* at the Seattle Repertory Theatre and productions at Empty Space, Intiman and the University of Washington. Nationally he has directed at the Milwaukee Repertory Theatre and at The Alley Theatre in Houston. As an actor he has appeared in leading and major roles at ACT (most recently as Ebenezer Scrooge in *A Christmas Carol*), the Seattle Rep, Intiman, and Empty Space, as well as many regional theatres throughout the country. Most recently Kurt played the title role in Seattle Shakespeare Company's production of *King Lear*. Kurt is the co-recipient (with Susan Trapnell) of the 2004 Theatre Puget Sound Gregory A. Falls Sustained Achievement Award.



Susan Trapnell (Managing Director) was appointed Managing Director in April of 2003. She served in the same position from 1982 – 2000. In the intervening 3 years, Susan spent two years as Executive Director of the Seattle Arts Commission (now the Office of Arts & Cultural Affairs) and Managing Director of the Guthrie Theater in Minneapolis. She is delighted to be back in Seattle and back at ACT. Susan holds a Bachelor of Arts degree in French from the University of North Carolina, and has lived in Lyons, France, Guelma, Algeria and Vienna, Austria. She moved to Seattle in 1976 to work with the Bill Evans Dance Company, first as Director of Education programs and then

as Managing Director. She has served as President of the Washington State Arts Alliance, Vice Chair of the King County Arts Commission and on the Board of the Downtown Seattle Association. She currently serves as a member of the Board of Directors of Theatre Communications Group, the Advisory Board of Arts Space, the Board of Town Hall, and is a Trustee of the Kreielsheimer Remainder Trust. Susan is the co-recipient (with Kurt Beattie) of the 2004 Theatre Puget Sound Gregory A. Falls Sustained Achievement Award.

SPECIAL THANKS TO

ACT Theatre gratefully acknowledges the following for their contributions to this production and season:

Daniel Keane, Market Place Salon – Burien
Morgan Rowe, Children's Casting Associate
Intiman Theatre
Seattle Repertory Theatre
UW School of Drama
Beverage Bistro of Redmond

Larry's Markets Catering
Impromptu Wine Bar & Café – Madison Park
Moby's Restaurant
Pacific Place
R. David Adams Flowers

ACT STAFF

Kurt Beattie
Artistic Director
Susan Trapnell
Managing Director

Artistic

Margaret Layne
Artistic Associate &
Casting Director
Anita Montgomery
Literary Associate &
Education Outreach Director
Sarah Guthu
Literary Intern

Administration

Nicole Boyer Cochran
Assistant to the Artistic &
Managing Directors
Andrew Ball
Systems Administrator &
Web Site Manager
Chris DeGracia
Operations & Events Manager
Dave Parmley
Facilities Manager
Liam White
Administrative Assistant
Teddy Heard
Facilities Maintenance

FINANCE

Mary D. Brown
Chief Financial Officer
Tessa Iffert Dul
Accountant
Tobi Beauchamp-Loya
Payroll
Robert G. Silva
Accounting Consultant

DEVELOPMENT, COMMUNICATIONS & MARKETING

Kenneth Johnson
Acting Development Director
Michelle Lewis
Grants Manager
Nicholas Barnett
Development Associate
Ben Formicola
Acting Marketing Director
Jack Hilovsky
Jessica Nikkel
Marketing Assistants

Stephen Belth
Marketing Consultant
Chris Bennion
Photographic Services

AUDIENCE SERVICES

Harley Rees
Director of Audience Services
Derek Pavone
Sales Manager
Shane Chapman
House Manager
Sean Collins
Assistant House Manager

Katalina Caliendo
Christine DiTolvo
Maureen Finneran
Stephen Jackson
Kate Kowal
Emilie Kuester
Chris McCool
Deanna Mustard
Chris Olson
Desereè Reyes
Ryan Rowell
Brendan Toner
Bill Williams
Patron Services
Christine Jew
Volunteer Usher Coordinator

Production

Joan Toggenburger
Producing Director
Kristina Wicke
Production Coordinator
Beth Hamrick
Technical Production Assistant

STAGE MANAGEMENT

Jeffrey K. Hanson
Production Stage Manager
Anne Kearson
Resident Stage Manager
Erin B. Zatlaka
Nora Menkin
Production Assistants
Stephanie Farhood
Production Intern

COSTUME DEPARTMENTS

Carolyn Keim
Costume Director
Connie Rinchiuso
Costume Shop Foreman

Kim Dancy
First Hand / Lead Dresser
Imelda Daranciang
Tesa Diaz
Lynda Salsbury-Luft
Stitchers
Sally Mellis
Wardrobe Master
Joyce Degenfelder
Wig Master

SCENIC DEPARTMENTS

Steve Coulter
Technical Director
Matthew Eggleton
Assistant Technical Director
Austin Smart
Master Scenic Carpenter
Derek Baylor
Mike Ehmann
Patrick Robinson
Scenic Carpenters
Mona Lang
Scenic Charge Artist
Lisa Bellero
Assistant Charge Artist
Marne Cohen Vance
Properties Master
Ken Ewert
Master Properties Artisan
Tristan E. Hansen
Mark Colombino
Nicolette Vannais
Properties Artisans

STAGE OPERATIONS

Nick Farwell
Stage Operations Supervisor
James Nichols
Master Stage Carpenter
Jason Montgomery
Stage Carpenter
Pam Mulkern
Master Electrician
Dominic CodyKramers
Master Sound Engineer
Ben Radin
Sound Engineer

Scenery, stage and costume work is performed by employees represented by I.A.T.S.E. Locals Number 15, 488 and 887.