

ENCORE



2.5 Minute Ride

A CONTEMPORARY THEATRE

PRESENTS

2.5 MINUTE RIDE

JULY 6 - 30, 2000

PREVIEWS JUNE 30 - JULY 5

7	Title Page
8	Lisa Kron
9	The Production Team
10	News from ACT's Development Department
12	Corporate Council for the Arts
13	ACT Executive Staff
13	Next in The Bullitt
14	Next on the Mainstage
15	ACT Board of Trustees & Advisory Council
16	Major Contributors
18	ACT Staff

Editor: Barry Allar
e-mail: barry@acttheatre.org
Cover design by Jackie Phillips

**A large print version of this playbill
is available from the house staff.**

A Contemporary Theatre
Kreielsheimer Place
700 Union Street • Seattle, WA 98101
Administration: 206-292-7660 / Fax: 206-292-7670
Box Office: 206-292-7676

Visit us on the internet: www.acttheatre.org



RIO COMES TO BELLTOWN!
DINING UNTIL 1:00 AM

2313 First Avenue
Reservations: 206.441.1188

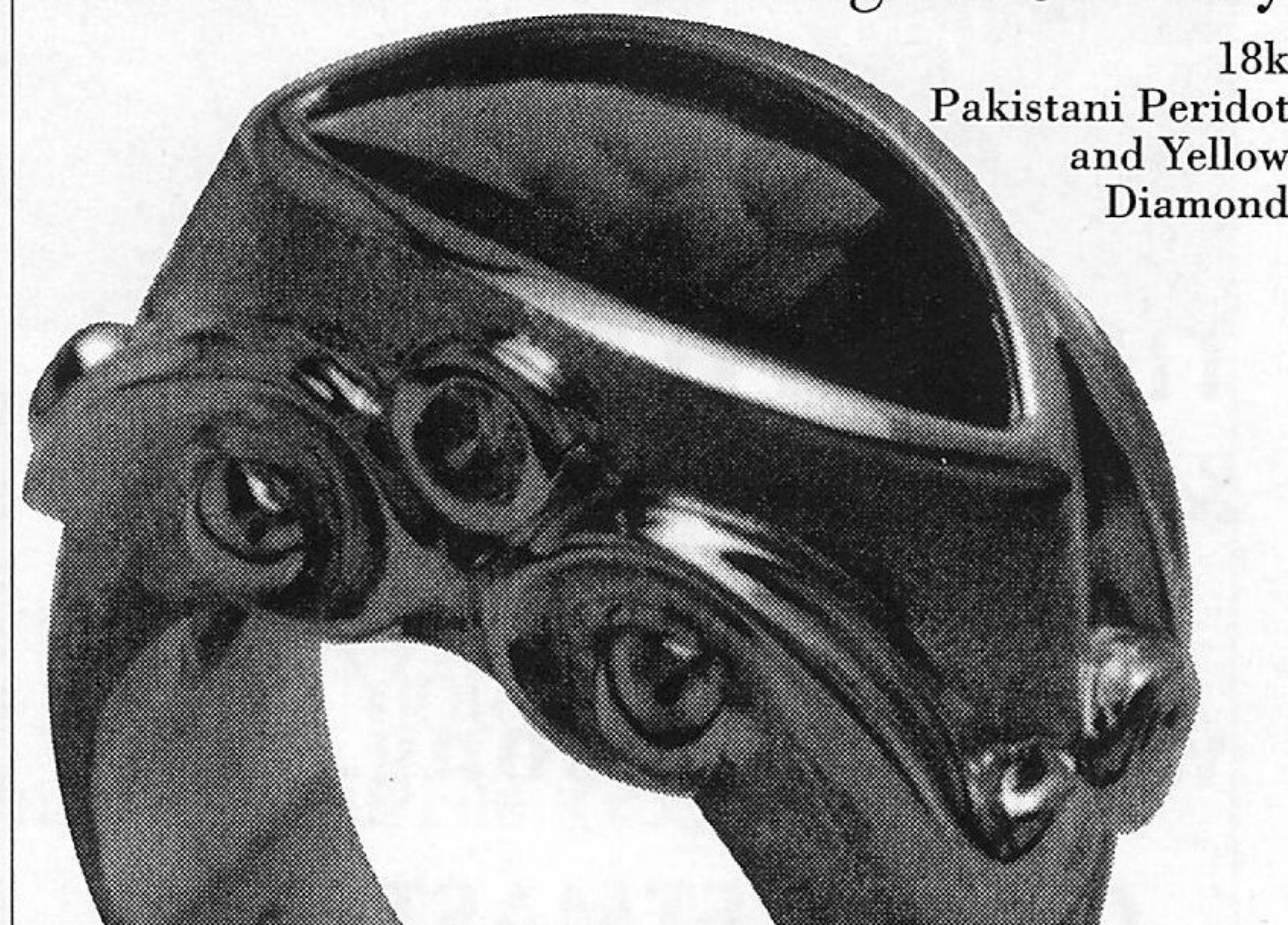
look for us
in our new
location on
the corner of
third & union streets
summer 2000

WILD GINGER

ASIAN RESTAURANT & SATAY BAR

1400 western avenue ♦ 623.4450
reservations recommended

THE WAYWARD SON
Estate and Custom Designed Jewelry



18k
Pakistani Peridot
and Yellow
Diamond

202 First Street, Langley, WA 98260
360-221-3911

Artist: Sandra Jean Wainwright

THE SEATTLE
GILBERT & SULLIVAN
SOCIETY PRESENTS

The
YEOMEN
of the **GUARD**



*The Merryman
and his Maid*

**GILBERT
& SULLIVAN**

◆ LIMITED RUN ◆
THREE WEEKS ONLY

JULY
14-15
20-22 ◆ 27-29

**BAGLEY WRIGHT THEATER
AT SEATTLE CENTER**

Tickets \$12 - \$24

**THE SEATTLE GILBERT
& SULLIVAN SOCIETY:**
206 341-9612

www.patterson.org

OR TICKETMASTER:
206 292-ARTS

**ACT's CORPORATE
ALLIANCE**

Be a 5 Performance Corporate
Sponsor and your company will
receive:

- Corporate Signage in the Theatre lobby
- Recognition in the *Encore* magazine
- Year-round donor recognition on our Season Fund Donor Wall located in the blue lobby
- Acknowledgment in ACT's Newsletter, *Backstage*
- PLUS, a Corporate Night that includes 20 complimentary tickets for your company with a hosted cocktail reception before the performance

This year we have added something new to the Corporate Alliance program. We are now offering our facility venues for various events. We have theatres and lobbies that are unique, well equipped, and lend themselves to creating a stylish meeting facility or an extraordinary party venue. We are already taking reservations for the holiday season. If you are interested in sponsoring an event at the theatre for your clients and/or employees, or having a creative, festive holiday party, call Allison Mollner, ACT's corporate marketing manager at 206-292-7660 ext. 1333.

July 2000
Volume 13, Issue 3



87 Wall Street
Seattle, WA 98121
Phone: 206.443.0445
Fax: 206.443.1246
Email: adsales@encore.wa.com
www.encoremidiagroup.com

Publisher of



A CONTEMPORARY THEATRE
BELLEVUE PHILHARMONIC
BROADWAY CENTER FOR THE PERFORMING ARTS
INTIMAN THEATRE
OFF BROADWAY
KIRKLAND PERFORMANCE CENTER
PACIFIC NORTHWEST BALLET
THE PARAMOUNT THEATRE
SEATTLE CHILDREN'S THEATRE
SEATTLE OPERA
SEATTLE REPERTORY THEATRE
SEATTLE SYMPHONY
TACOMA ACTORS GUILD
VILLAGE THEATRE
Advertising Sales Representatives for
KCTS MAGAZINE
WAC MAGAZINE

**Our 30th Anniversary
is dedicated to
Philbrook Heppner, 1926 - 1999**

Operations

PAUL HEPPNER, *President*
CANDACE FRANKINBURGER, *Controller*
SUSAN PETERSON, *Operations Director*
LINDA COOPER, *Systems Administrator*
CAROL FERNANDES, *Administrative Assistant*
NAOMI STIFFELMAN, *Administrative Assistant*
SUSAN ZARKIN, *Research Analyst*

Publications

JODY CHATALAS, *Publications Manager*
JANNIE CURTIN, *Production Lead*
ROBIN KESSLER, *Production Associate*
KAREN MCCLINTON, *Production Associate*
JONATHAN SHIPLEY, *Advertising Coordinator*

Advertising Sales

MIKE HATHAWAY
Advertising Sales Director
BRENDA SENDEROFF
Marketing Development
CONI IDLER, SHERRI JARVEY, SUSAN LATTA,
KIM PARRIOTT, LENORE WALDRON
Account Executives

National Sales Offices

LOS ANGELES, CHICAGO, DENVER,
BOSTON, DETROIT AND NEW YORK

All rights reserved. © 2000. Reproduction without written permission is prohibited.
Member: Corporate Council for the Arts, Council for Corporate Responsibility,
CSBA, and Greater Seattle Chamber of Commerce.
Printed by Times Litho

A CONTEMPORARY THEATRE

GORDON EDELSTEIN
Artistic Director

JIM LODER
Managing Director

VITO ZINGARELLI
Producing Director

presents

2.5 MINUTE RIDE

Written and Performed by Lisa Kron

Directed by Mark Brokaw

Lighting Designer	Kenneth Posner
Sound Designer	Darron L. West
Original Music	Dan Froot
Stage Manager	Anne Kearson
Consulting Stage Manager	Bess Marie Glorioso
Assistant Lighting Designer	Scott Bolman

There will be no intermission.

**This production is sponsored by a generous grant from
the Nesholm Family Foundation.**

The world premiere of *2.5 Minute Ride*, directed by Lowry Marshall, was produced at the La Jolla Playhouse, La Jolla, California; Michael Greif, Artistic Director & Terrence Dwyer, Managing Director.

2.5 Minute Ride was produced in New York by the Joseph Papp Public Theater/New York Shakespeare Festival, George C. Wolfe, Producer, in March 1999.

The original script for the La Jolla Playhouse production was developed through collaborative work with Lowry Marshall and subsequently reworked during a residency at SoHo Rep, New York City, in April 1997 presented by David Binder.

The actor and stage manager in this production are members of Actors' Equity Association, the union of professional actors and stage managers in the United States.

Audience members are reminded to please silence all electronic devices such as cellular phones, pagers, and watch alarms prior to the performance.

A Contemporary Theatre is a member of the League of Resident Theatres, the American Arts Alliance, the Washington State Arts Alliance, Theatre Puget Sound and is a constituent of Theatre Communications Group. This theatre operates under an agreement between the League of Resident Theatres and Actors' Equity Association, the union of professional actors and stage managers in the United States. Directors and choreographers at ACT are members of the Society of Stage Directors and Choreographers, an independent national labor union.



SEATTLE'S PREMIER
STEAK HOUSE!

Private Dining

1st and Wall • (206) 728-1337

**AFTER THE SHOW,
GET INTO YOUR CAR,
MOVE TO ANOTHER LOT,
PAY MORE MONEY TO PARK,
HAVE DINNER.**

**OR MERELY WALK
ACROSS THE STREET**



Late Night Dining till 1:00 am

In the Paramount Hotel • 8th & Pine
(206) 467-7777 • www.dragonfishcafe.com



A fixture since 1936
VISIT OUR SHOWROOM

**Bath and Kitchen Design...
To Completion**

- Antique Reproductions
- Unique styles of fixtures,
faucets & accessories
- Hard to find parts and supplies

DAWSON PLUMBING CO.
On 12th Ave. between Pike & Pine

Sat. 10-3 **323-2718** M-F 9-5

LISA KRON
Writer and Performer



**"THE FIRST TIME
YOU TELL A STORY,
IT'S FACT.
THE SECOND TIME
IT'S FICTION."
—ANONYMOUS**

Lisa Kron has been writing and performing solo work for the past 15 years. Her work has been presented at New York Theatre Workshop, The Joseph Papp Public Theater, Serious Fun! at Lincoln Center, La Jolla Playhouse, Center Stage (Baltimore), American Repertory Theatre (Cambridge), Actors Theatre of Louisville, Yale Rep, Spoleto U.S.A., Trinity Rep/Perishable Theatre, the Wexner Center, the WOW Cafe, Dixon Place, P.S. 122, and at the Barbican Theatre Center in London. For *2.5 Minute Ride* she received an Obie Award, a Los Angeles DramaLogue Award, Drama Desk and Outer Critics Circle nominations and the New York Press Award for Best Autobiographical Solo Show. For her show *101 Humiliating Stories*, she received a Drama Desk nomination. Other awards include a 1999 GLAAD Media Award, the 1997 CalArts/Alpert Award in Theatre, a Creative Capitol Foundation Grant, an NYFA Fellowship in playwriting, and the Robert Chesley Gay and Lesbian Playwriting Award. Lisa is a founding member of the Obie and Bessie Award-winning theater company, The Five Lesbian Brothers, whose plays *The Secretaries*, *Voyage to Lesbos*, *Brave Smiles*, and *Brides of the Moon* have been produced by NYTW, WOW Cafe, Dixon Place, P.S. 122, Theatre Rhinoceros/San Francisco, and Diverse Works/Houston. As an actress, Lisa has appeared in such productions as Paul Rudnick's *The Most Fabulous Story Ever Told* at NYTW and the Minetta Lane, and the workshop production of Paula Vogel's *The Mineola Twins* at NYTW and A.R.T. This past fall, Lisa appeared nationally and at the Joyce Theatre in New York as a guest artist in the modern dance piece, *The Descent Beckons*, with Susan Marshall & Company. Lisa's work has been excerpted in numerous books and periodicals, and anthologies of both her solo work and the plays of The Five Lesbian Brothers will be brought out by Theatre Communications Group in the coming year. She is currently at work on a new piece called *The Contents of Mildred's Purse*.

PRODUCTION STAFF

MARK BROKAW

Director

New York credits include *The Dying Gaul* and the Pulitzer Prize-winning *How I Learned to Drive* (Vineyard Theatre; Drama Desk, Obie, Lortel awards for direction); *This is Our Youth*, *Gemini*, *The Good Times are Killing Me* (Second Stage); *As Bees in Honey Drown* (Drama Dept.); *Wake Up, I'm Fat!*, *Tartuffe* (New York Shakespeare Festival/Public Theater); and productions at Manhattan Theatre Club, Playwrights Horizons, WPA, and the *Encore!* series at City Center. Regional credits include the Guthrie Theater, Mark Taper Forum, Steppenwolf Theatre Company, Seattle Repertory Theatre, La Jolla Playhouse, Hartford Stage Company, Long Wharf, Yale Rep, Actors Theatre of Louisville, Huntington Theatre Company, Studio Arena, Portland Stage, and the O'Neill National Music Theatre Conference. Mark was the recipient of a National Artists Residency Grant from Pew Charitable Trusts and Theatre Communications Group in association with Second Stage, where he is the resident director. He is on the executive board of the Society of Stage Directors and Choreographers, and is a member of Drama Dept.

KENNETH POSNER

Lighting Designer

Broadway credits include *Swing*, *Uncle Vanya*, *Side Man*, *You're a Good Man Charlie Brown*, *The Lion in Winter*, *Little Me*, *A View from the Bridge*, *The Last Night of Ballyhoo*, *Getting Away with Murder*, *The Little Foxes*, *The Rose Tattoo*, *The Father*, and *The Rehearsal*. Off-Broadway designs include *The Wild Party* (Manhattan Theatre Club), *The Waverly Gallery*, *The Winter's Tale* (Delacorte), *That Championship Season*, *Pride's Crossing*, *Misalliance*, *As Bees in Honey Drown*, *Cowgirls*, *The Food Chain*, *SubUrbia* (Lincoln Center Theatre), and productions at Playwrights Horizons, The Public Theater, Second Stage, and Classic Stage Company. Regional design credits include Actors Theatre of Louisville, Alley Theatre, Arena Stage, Berkshire Theatre Festival, Center Stage, Dallas Theatre Center, The Goodman Theatre, The Guthrie Theater, Old Globe Theatre, Hartford Stage, Huntington Theatre Company, McCarter Theatre, Seattle Repertory Theatre, and Williamstown

Theatre Festival. Opera credits include designs for the New York City Opera and the Chicago Symphony Orchestra.

DARRON L. WEST

Sound Designer

Darron is an associate and "usual suspect" at New York Theatre Workshop (NYTW), and a company member and soundscapes designer for Anne Bogart's Saratoga International Theatre Institute (SITI Co.). He made his Broadway debut with *Wait Until Dark*. At NYTW, he designed a myriad of productions including *Quills*, *The Most Fabulous Story Ever Told* (also at Minetta Lane), *The Secretaries*, and *Rent*. With Bogart and the SITI Co., he designed numerous productions in the United States and internationally of *The Medium*, *Small Lives Big Dreams*, *Going Going Gone*, *Ms. Julie*, *Culture of Desire*, *Private Lives*, and *BOB* (Drama Desk Award nomination, 1998 Obie Award for Soundscape). Recent off-Broadway credits include *Chesapeake* at Second Stage (2000 Drama Desk Award nomination) and *Y2K* for Manhattan Theatre Club (2000 Drama Desk Award nomination). He is a two-time American Theatre Wing and Barrymore Award nominee for sound design, a former resident sound designer at Actors Theatre of Louisville, and is a 1997 Princess Grace Award winner for his soundscapes with SITI Co.

DAN FROOT

Original Music

Dan received a 1991 Bessie Award for his music/theatre work *Seventeen Kilos of Garlic*. His music concerts, theater pieces, and performance events have been presented across the U.S. and Europe by leading alternative arts centers including Dance Theater Workshop, La MaMa ETC, P. S. 122, and The Danspace Project in New York. Over the past twelve years he has composed numerous scores for dance and theater companies and has danced, acted, and played music with the likes of David Dorfman, Victoria Marks, Yoshiko Chuma, Mabou Mines, David Cale, Ping Chong, and Dan Hurlin. Last May he premiered a concert entitled *Blow Molding*, featuring his dancing saxophone quartet, David Dorfman, and Laurie Carlos at P.S. 122. He is currently an M.F.A. candidate at UCLA's Department of World Arts and Cultures.

ANNE KEARSON

Stage Manager

Anne is pleased to return to ACT, having stage managed *God of Vengeance* earlier this season, and *A Christmas Carol*, *Side Man*, *Stonewall Jackson's House*, and *The Crucible* last season. She also served as assistant stage manager for ACT's production of *Violet* in 1998. Locally she has worked at Seattle Repertory Theatre (*The Beauty Queen of Leenane*, *An Ideal Husband*, *Seven Guitars*), Tacoma Actors Guild (*Miss Julie*, *Oleanna*, *The Glass Menagerie*), and The Bathhouse Theatre (*A Legend of St. Nicholas*, *A Midsummer Night's Dream*, *Temptation*). Other stage management credits include five seasons with South Coast Repertory, five seasons with Shakespeare Santa Cruz where she served as production stage manager, two seasons with the Utah Shakespearean Festival, Shakespeare Orange County, the Los Angeles Festival of the Arts and the "Latino Laugh Festival" for Showtime. Anne finds continuous joy in her daughter, Rebecca, and is proud to be the third generation of Kearsons in the entertainment industry.

BESS MARIE GLORIOSO

Consulting Stage Manager

Bess has worked on the off-Broadway productions of *Bosoms and Neglect*, *Lonely on the Bayou*, and *The Night They Burned Washington* in addition to *2.5 Minute Ride*. Her regional credits include *Blade to the Heat*, *Mules*, *Bocon*, *Changes of Heart*, *Play of Father and Junior*, and *Square Root of Terrible* (Mark Taper Forum). Ms. Glorioso has also worked on the PSRC Project (Roundabout), and at Manhattan Class Company, Circle Reb Lab, Poem Pictures, and MGR Playhouse.

ACKNOWLEDGMENTS

*ACT gratefully acknowledges
the following for their
generous assistance:*

Daniel Keane, Market Place Salon

Amazing Vase.com

Dragonfish Asian Café

Rock Bottom Brewery

Trapeze Bar & Bistro

ACT CAPITALIZATION FUND

ACT gratefully acknowledges the generosity, confidence, and vision of our Capitalization Partners.

The Allen Foundation for the Arts

Buster & Nancy Alvord

The Boeing Company

Philip Condit & Geda Maso

John Graham Foundation

Lawton Hansell & John Hansell

(in memory)

King County Office of Cultural Facilities

Kreielsheimer Foundation

Microsoft Corporation

Doug & Nancy Norberg

The Nordhoff Foundation

Don & Bonnie Paterson

Sam & Gladys Rubinstein

The Seattle Foundation

David & Catherine Skinner

Kayla Skinner

Samuel & Althea Stroum Foundation

George & Colleen Willoughby

Dr. William M. Womack

The Bagley Wright Fund

For information about ACT's Capitalization Fund, contact Jim Loder, managing director, at 206-292-7660, extension 1222.

CORPORATE ALLIANCE

ACT salutes the following companies for joining the 2000 Corporate Alliance program. We appreciate your support!

Shah Safari

Primus Knowledge

Immunex

The Hotel Group

Davis Wright Tremaine

Nortel Networks

Riddell Williams, P.S.

Jewish Federation of Greater Seattle

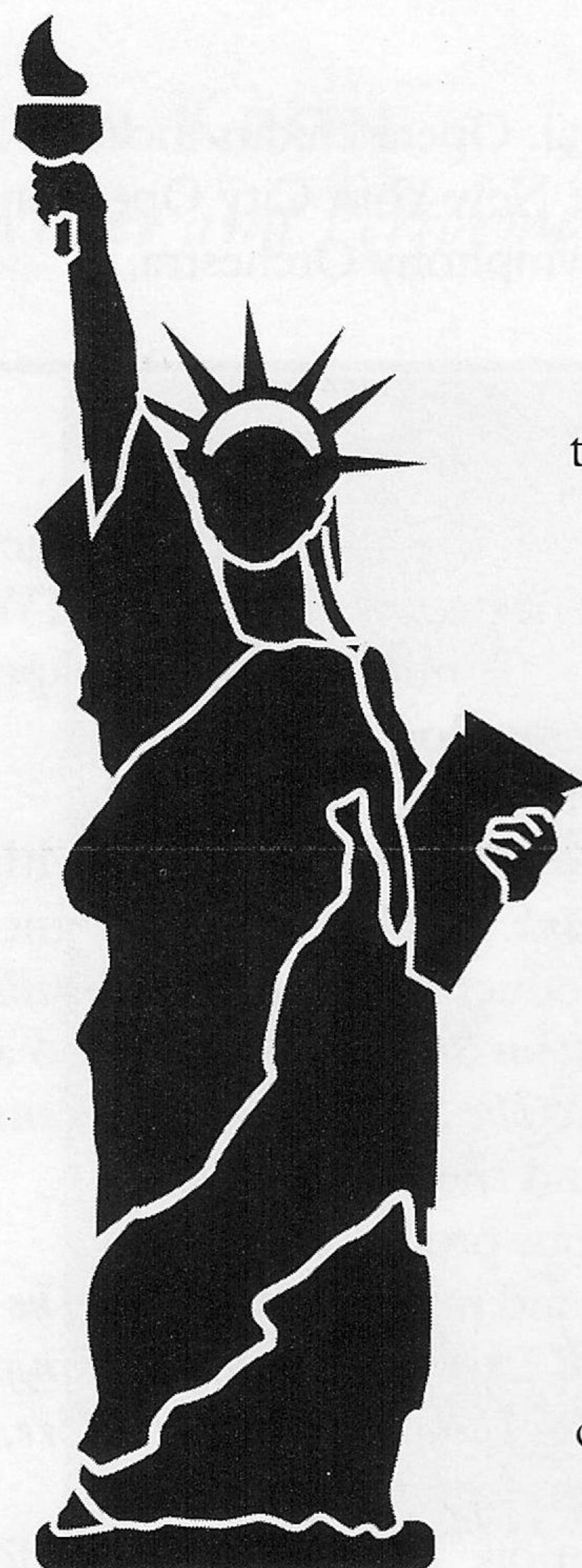
WRQ

Young Presidents Organization

Data Dimensions

Benefits of joining the Corporate Alliance include season tickets, corporate recognition, and opportunities for special events and sponsorships. For more information on ACT's Corporate Alliance, contact Allison Mollner, corporate marketing manager, 206-292-7660 ext. 1333.

Start Spreadin' the News!



ACT/New York Theatre Tour

Spring 2001

(Exact Dates TBA)

ACT's Artistic Director Gordon Edelstein is ready to show you around his "town" —New York, New York— during a thrilling three-day weekend.

Included in this tax-deductible trip will be:

Reservations in one of New York City's finest hotels.

Dinner with a special guest (to be announced).

Theatre tickets to the hottest shows playing.

A behind-the-scenes tour of a major arts organization.

A luscious departure brunch.

And More!

For more information, and to be put on the mailing list, contact Shawna Akin in ACT's Development Department, 206-292-7660 ext. 1338. Full details on this exciting trip will be sent to you as soon as they are available!

Please Consider ACT as a Part of Your Planned Giving

When you write or review your will, please consider leaving A Contemporary Theatre a charitable bequest to help ensure great theatre in downtown Seattle for future generations.

Please check the appropriate box and return this response card in the attached envelope.

☐ I have included ACT in my will.

☐ I am considering naming ACT in my will.

☐ Please send me more information about wills and bequests.

Name _____

Address _____

City _____

State _____ Zip _____

Phone _____

OR

call Ashley Leasure, ACT's Development Director, 206-292-7660 ext. 1334.

A CONTEMPORARY THEATRE
700 UNION STREET • SEATTLE, WA 98101

Share a Seat with the Future...

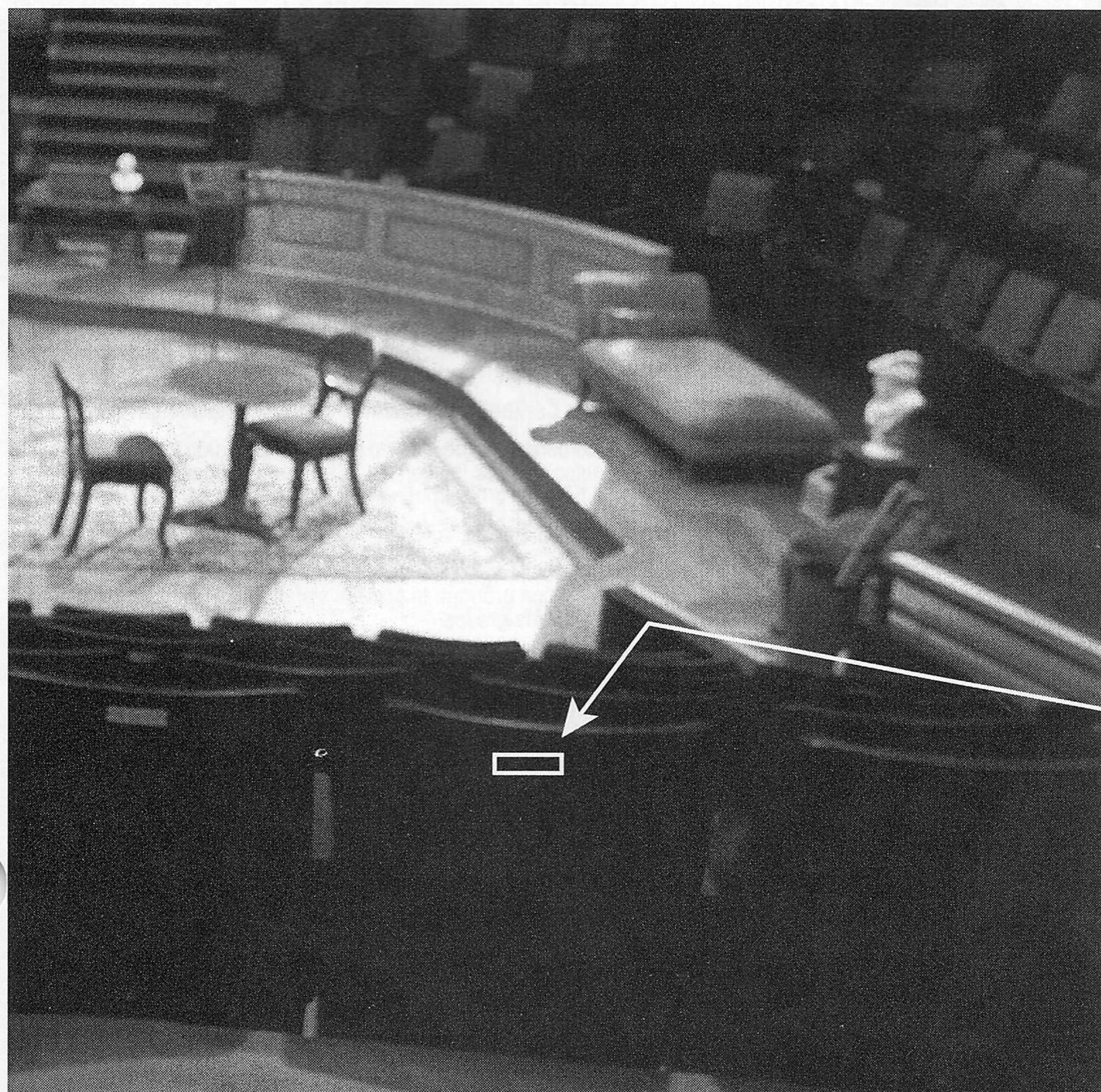
You can play a crucial role in ACT's future by purchasing a seat in one of ACT's extraordinary theatre spaces. The revenue generated through the purchase of seats will help support the theatre's education and outreach programs, will encourage future generations to develop an affinity for this wonderful art form, and stimulate their cultural identity. For a \$1500 investment in the theatre, you will receive a seat, in the theatre of your choice, that will permanently display your personalized plaque. Installment options are available.

By supporting this seat campaign, you will give someone the unique and magical gift of experiencing live theatre. Portions of this seat campaign will be used to underwrite student matinees, Under Twenty-five Tickets, Equal Access Programs, higher education and community collaborations, as well as outreach programs benefitting senior citizens.

"Your purchase of a seat in one of our intimate and beautiful theatre spaces allows us to fill our corridors with the country's most innovative and dynamic talents, as well as the Seattle artists who have come to consider ACT their creative home."

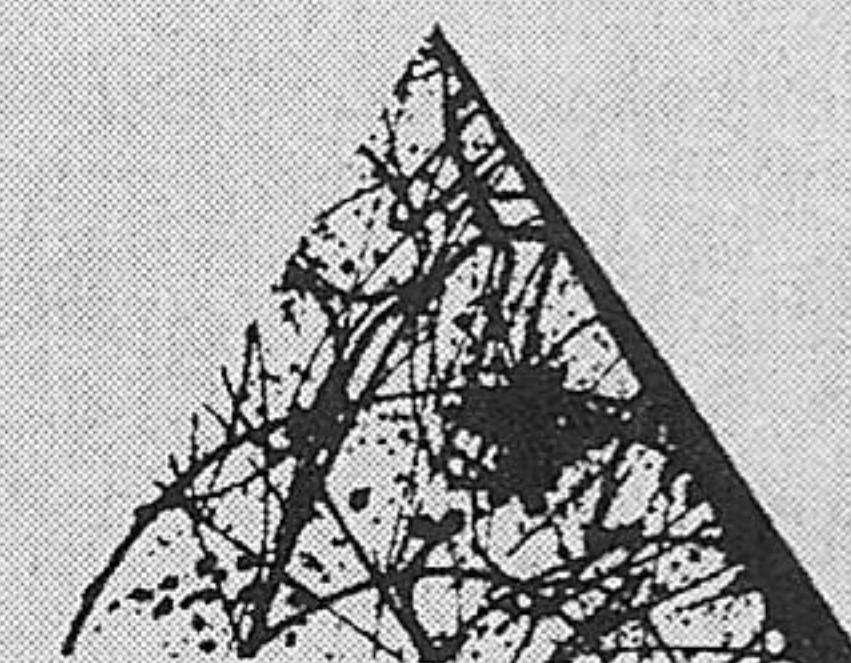
— Gordon Edelstein,
ACT Artistic Director

For more information or to purchase a seat(s), please fill out and return the enclosed envelope or contact Ashley Leasure in the Development Department at 206-292-7660. Detailed brochures are also available in the lobby.



YOUR
NAME
HERE

ONGOING SUPPORT



Corporate Council
for the Arts



SEATTLE ARTS
COMMISSION

PONCHO

Because the arts can't flourish on imagination alone



KING COUNTY
ARTS COMMISSION

THE SHUBERT FOUNDATION, INC

WASHINGTON STATE
ARTS COMMISSION



NATIONAL
ENDOWMENT
FOR THE ARTS

ACT's education and outreach programs are sponsored by a grant from **The Norcliffe Foundation.**

ACT's New Play Development activities are supported by the Albert & Harriet H. Hoffenberg Charitable Trusts.

The 2000 Student Matinee Series is supported by The Horizons Foundation and the Dupar Foundation.

The pay-what-you-will performance is supported by a grant from the King County Arts Commission.



King County
Arts Commission

Some people dance. Some people sing. Some people paint.
[Luckily, others simply give.]

KING COUNTY CONTRIBUTORS OF \$850 OR MORE AS OF JUNE 30, 1999:

Corporate Donors

\$400,000 and above

The Boeing Company

\$250,000 - \$399,999

Microsoft Corporation

Employees of Microsoft Corporation

\$150,000 - \$249,999

PACCAR Foundation

SAFECO Corporation

\$100,000 - \$149,999

BankAmerica Foundation

Washington Mutual

Savings Bank

Weyerhaeuser Company

Foundation

Employees of Weyerhaeuser Company

\$50,000 - \$99,999

U.S. Bank

U S WEST

Wells Fargo Bank

\$25,000 - \$49,999

The Ackerley Group

AT&T Wireless Services

Attachmate Corporation

Costco

Encore Media Group

KeyBank

KING 5 TV

Employees of KING 5 TV

The Seattle Post-Intelligencer

The Seattle Times

\$15,000 - \$24,999

Airborne Express

The Bon Marche

Employees of The Bon Marche

Deloitte & Touche

Eddie Bauer, Inc.

Employees of Eddie Bauer, Inc.

Expeditors International of

Washington

Nordstrom, Inc.

Northern Life Insurance

Company

Penford Corporation

Puget Sound Energy

Staging Techniques

Union Pacific Foundation

\$10,000 - \$14,999

Alaska Airlines, Inc.

AON Risk Services, Inc. of

Washington

Employees of AON Risk Services,

Inc. of Washington

ARCO

Caribiner Digital Media Group

The Coca-Cola Company

The Commerce Bank of

Washington

Employees of The Commerce

Bank of Washington

Graham & James LLP/

Riddell Williams P.S.

Employees of Graham & James

LLP/Riddell Williams P.S

Immunex Corporation

King County Journal

Newspapers

Employees of Metropolitan

King County

Ovation, Inc.

Price Waterhouse LLP

\$7,500 - \$9,999

Continental Savings Bank

Davis Wright Tremaine

Employees of Davis Wright

Tremaine

Foster Pepper & Shefelman

PLLC

Employees of Foster Pepper &

Shefelman PLLC

Perkins Coie

The Production Network

\$5,000 - \$7,499

Alaskan Copper & Brass Company/

Alaskan Copper Works

Bureau of Education & Research

Benaroya Capital Company

CH2M Hill

Employees of CH2M Hill

Chateau Ste. Michelle Winery

Employees of the City of Seattle

Corbis Corporation

Dorsey & Whitney Foundation

Ernst & Young LLP

Esterline Technologies

KCPQ-TV/Kelly Foundation

KPMG Peat Marwick LLP

KOMO Radio and Television

Medical Consultants Network, Inc.

Mitsui & Co. (U.S.A.), Inc.

MNC Enterprises

Nintendo of America Inc.

Pacific Coast Feather Company

Preston Gates & Ellis

Employees of Prudential

Securities, Inc.

Ragen MacKenzie Incorporated

Rowley Enterprises, Inc.

Simpson Fund

United Airlines, Inc.

\$2,500 - \$4,999

ABN AMRO Bank

Advanced Integration

Technology, Inc.

AEI Music Network Inc.

Alhadeff Properties

Anonymous

Artcraft Printing Company

Battelle

Baugh Enterprises, Inc.

Ben Bridge Jeweler

Callison Architecture, Inc.

Canon U.S.A., Inc.

Cavanaugh's on Fifth Avenue

City University

Financial Resources Group

Flow International Corporation

Focused Change International

Foss Maritime Company

Fred Meyer, Inc.

GM Nameplate, Inc.

Gordon, Thomas, Honeywell,

Malanca, Peterson & Daheim

Hugh G. Goldsmith &

Associates, Inc.

J.C. Penney

Lane Powell Spears Lubersky

LeDuc Packaging, Inc.

LMN Architects

McCann-Erikson Seattle

Medtronic Physio-Control

NBBJ

N.C. Machinery Company

Pepsi-Cola Company

Rick Eiber Design (RED)

Regence BlueShield

Employees of the Seattle School

District

Sellen Construction Co., Inc.

Services Group of America

Sheraton Seattle Hotel & Towers

Skilling Ward Magnusson

Barkshire Inc.

Sparling Technology Consultants

Employees of Steel Rives LLP

Towers Perrin

UNICO Properties, Inc.

Union Bank of California

Universal Services

University Book Store

USAA Foundation, A Charitable

Trust

Washington Federal Savings

WestFarm Foods

Williams Kastner & Gibbs PLLC

Woods & Associates

Wright Runstad & Company

Zellerbach, A Mead Company

\$1,250 - \$2,499

Alcoa Foundation

Alvin Goldfarb, Jeweler

Anonymous

ARGOSY

Arthur Andersen / Andersen Consulting

Employees of Arthur Andersen /

Andersen Consulting

Bardsley Associates Inc.

BMW Seattle

Brotherton Automotive Group

Cascade Drilling, Inc.

The Chevron Companies

Christensen, O'Connor, Johnson &

Kindness P.L.L.C.

Compton Lumber Company

Dexter Adhesive and Coating Systems

Dunn Lumber Company, Inc.

Eileen of China

Ewing & Clark Real Estate, Inc.

Fossil, Inc.

Four Seasons Olympic Hotel - Seattle

Garvey, Schubert & Barer

Irvin, Inc.

Hillis Clark Martin & Peterson

Home Owners Club

Jameson Babbitt Stites & Lombar

J&H Marsh & McLennan

K & L Distributors, Inc.

KIRO TV

Laird Norton Trust Company

Lake Union Drydock Company

Mitsubishi International Corporation

Molbak's Inc.

Morton Clarke Fu & Metcalf, Inc.

The Nord Group

Northwest Flower & Garden Show

\$850 - \$1,249

3M Abrasive Systems Division

Acordia Northwest, Inc.

Activate

Alaska National Insurance Company

American Building Maintenance Co.

Business Interiors Northwest

Cairncross & Hempelmann

Cochran Electrical Contractors

The Collins Group

Employees of The Collins Group

Contract Hardware Inc.

Cosmopolitan Motors

Covenant Mortgage Corporation

Ducky's Office Furniture

Eldec Corporation

Farmers New World Life

Insurance Company

The Glosten Associates, Inc.

Grinnell Fire Protection Systems

HDR Engineering, Inc.

Heller, Ehrman, White & McAuliffe

Iridio

Kaiser/Group Health

Lindal Cedar Homes Inc.

Matson Navigation Company

Matsushita Avionics Systems

Corporation

Melvyn Poll Inc.

Murray Pacific Corporation

National Bank of Alaska

National Frozen Foods

Corporation

Nowogroski/Rupp Insurance

Group

Olympic Pipe Line Company

Otis Elevator Company

Penguin Picture Framing Fine Arts

Pioneer Industries

QFC/Quality Food Centers, Inc.

Seattle NW Securities Corporation

Seattle VIP Services Inc.

Sebris Busto, P.S.

Seed and Berry

See's Candies, Inc.

Shannon & Wilson, Inc.

Sirach Capital Management, Inc.

Sterling Realty Organization Co.

Stratos Product Development Group

Targeted Genetics Corporation

Teutsch Partners

Ticon, Inc.

Totem Ocean Trailer Express Inc.

W. G. Clark Construction

Willis Corroon Corporation of Seattle

ArtsFund

Individuals and foundations contributing directly or through the workplace.

Arts Benefactor Circle

Contributors of \$600 or more.

\$150,000 and above

Kreielsheimer Foundation

\$25,000 - \$49,999

Anonymous (2)

Joshua Green

Foundation, Inc.

\$15,000 - \$24,999

Glen E. Archer and

Anne R. Wilson

\$10,000 - \$14,999

Priscilla Bullitt Collins

Mr. and Mrs. Alexander C.

Stewart, Jr.

Bert J. McNae, Inc.

George and Jane Russell

Kayla Skinner

Arlene Wright

Norman Archibald

Charitable Foundation

\$5,000 - \$9,999

J.D. and Carol Alexander

Sally and Bob Behnke

David D. and Nancie M. Buck

Katharyn A. Gerlich

Laura E. Ingham

William H. Neukom

Mark and Heather

ACT EXECUTIVE STAFF

GORDON EDELSTEIN

Artistic Director

Gordon Edelstein became artistic director of ACT in September of 1997. Since his arrival, ACT has enjoyed its highest subscription renewal rate in 16 years, its first increase in subscribers in five years, and was named "Best Theater" two years in a row by readers of the *Seattle Weekly*. Gordon directed ACT's world premiere of Lisette Lecat Ross's *Scent of the Roses* starring the legendary Julie Harris, and directed last season's acclaimed production of *The Crucible*, which was named one of the top productions in the country by *The Wall Street Journal*, as well as the world premiere of David Wiltse's *Temporary Help* which is currently slated for an off-Broadway run in 2000/2001. Previously at ACT, he directed the sold-out production of *Death of a Salesman* starring John Aylward and he directed this season's opener, Donald Margulies' world premiere adaptation of *God of Vengeance*. Also at ACT, Gordon produced the world premiere of *Power Plays* which went on to a hit run off-Broadway, Eve Ensler's *The Vagina Monologues* which is currently running in New York at the West Side Arts, and the world premiere of Pamela Gien's *The Syringa Tree* which will open off-Broadway later this year. Prior to moving to Seattle, Gordon was associate artistic director of the Long Wharf Theatre in New Haven, Connecticut, where he directed over 15 productions, and he was the associate artistic director of the Berkshire Theatre Festival in Stockbridge, Massachusetts, where he produced over 30 shows. His extensive New York credits include the acclaimed Broadway revival of Pinter's *The Homecoming* at the Roundabout Theatre Company, and Michael Henry Brown's *The Day the Bronx Died* both off-Broadway and at the Tricycle Theatre, London and premiere works by Arthur Miller, Constance Congdon, and Paula Vogel. His other directing work has been seen around the country, from the Perseverance Theatre in Alaska to Arena Stage in Washington, D.C. Gordon's work has long been distinguished by his deep commitment to the development of contemporary playwrights, and he has either directed or

produced works by such diverse writers as Alan Ayckbourn, Jon Robin Baitz, Michael Henry Brown, Caryl Churchill, Pearl Cleage, Darrah Cloud, Noel Coward, Russell Davis, Christopher Durang, Keith Glover, Simon Gray, Christopher Hampton, Silas Jones, Warren Light, Donald Margulies, Dael Orlandersmith, Polly Pen, Stephen Sondheim, Harold Pinter, Jonathan Reynolds, Peter Sagal, Paula Vogel, Mac Wellman, Doug Wright and Paul Zaloom. He has also produced and directed works by Beckett, Brecht, Chekhov, Feydeau, Eugene O'Neill, Shakespeare, and Tennessee Williams. Gordon was nominated for an Emmy Award for his direction of "Abby My Love" for CBS and he directed "Brotherly Love" for HBO as well as "Notes for My Daughter" for ABC. He has served on the boards of the Stage Directors and Choreographers Foundation and the Seattle fringe company, House of Dames. Gordon is married to Joan Berman and has two children, Marlena and Noah.

JIM LODER

Managing Director

Jim was appointed managing director of ACT in February of this year, after serving as ACT's general manager since July of 1999. He arrived at ACT with 12 years of experience in theatre management, company management, facilities management and operations, as well as human resources experience. He also has an extensive background in construction management and quality assurance. Jim spent five years with Seattle's Intiman Theatre as general manager and another five years as company manager for The Utah Shakespearean Festival. He also spent two years at Seattle Repertory Theatre. For the last three years he has been on the board for the Northwest AIDS Foundation's "Audiences Fight AIDS" project, and has served on the Technical Advisory Committee for Seattle Central Community College's Arts Management Certificate Program. Jim holds an M.F.A. in Drama from the University of California at Irvine and a B.A. in Theatre from Southern Utah State College.

VITO ZINGARELLI

Producing Director

Vito joined ACT as producing director in 1998 after more than 20 years as a producing director, production manager and stage manager at resident professional theatre companies across North America. He trained in stage management and production management at the Guthrie Theater in Minneapolis under the artistic leadership of Michael Langham and moved to Seattle in 1978 where he continued his work as a stage manager with seasons at the Milwaukee Repertory Theater and Alaska Repertory Theatre as well as at the original Empty Space Theatre in Seattle. Vito became the Seattle Repertory Theatre's first production manager from 1980 - 85 working under the artistic leadership of both John Hirsch and Daniel Sullivan. He also enjoyed a close collaboration with then technical production director, Robert Scales, in The Rep's building and move into the Bagley Wright Theatre, where for the first time Seattle Rep's performance stages, production shops and administrative offices were combined under one roof. After serving as producing director for the Washington State Pavilion at EXPO '86 in Vancouver, Canada, he joined Sharon Ott at the Berkeley Repertory Theatre and served as production manager from 1987 - 92. He returned to the Pacific Northwest most recently in 1995 after serving as director of production for all producing activities at North America's largest resident theatre company, the Stratford Shakespeare Festival in Ontario, Canada. Prior to his appointment at ACT, Vito produced several independent productions and tours to Europe and Japan as well as serving as executive director of the Whidbey Island Center for the Arts near his home on Whidbey Island in Puget Sound.

COMING UP IN THE ALLEN THEATRE

American Premiere!

A Skull in Connemara

by Martin McDonagh

Directed by Gordon Edelstein

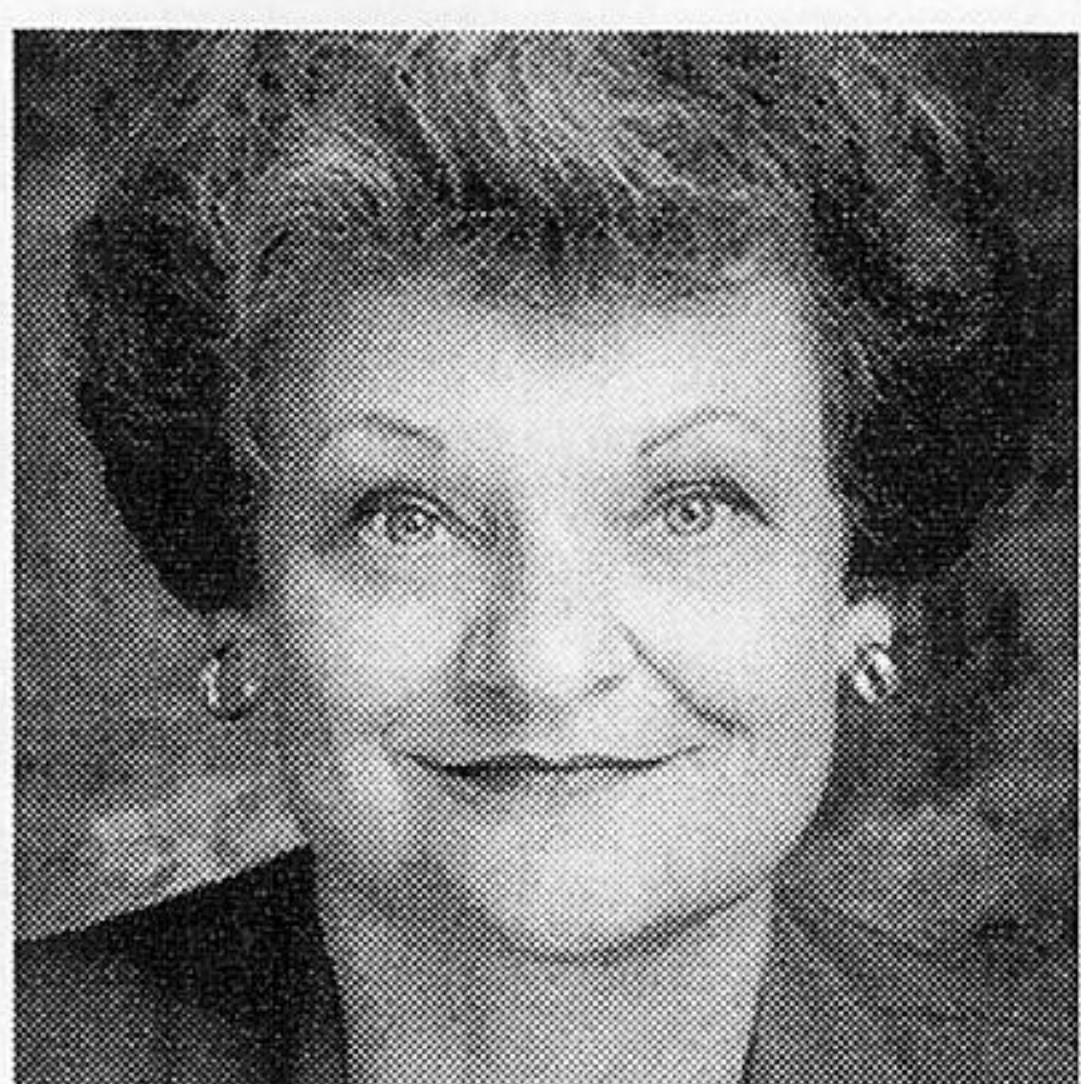
JULY 27-AUGUST 20
PREVIEWS JULY 21-26

One of the freshest, most original new voices in the theatre to come along in years, Martin McDonagh has created a sensation in London and is now making a splash overseas. ACT is proud to present the American premiere of *A Skull in Connemara*, a black comedy of unapologizing surprises and unexpected depths.

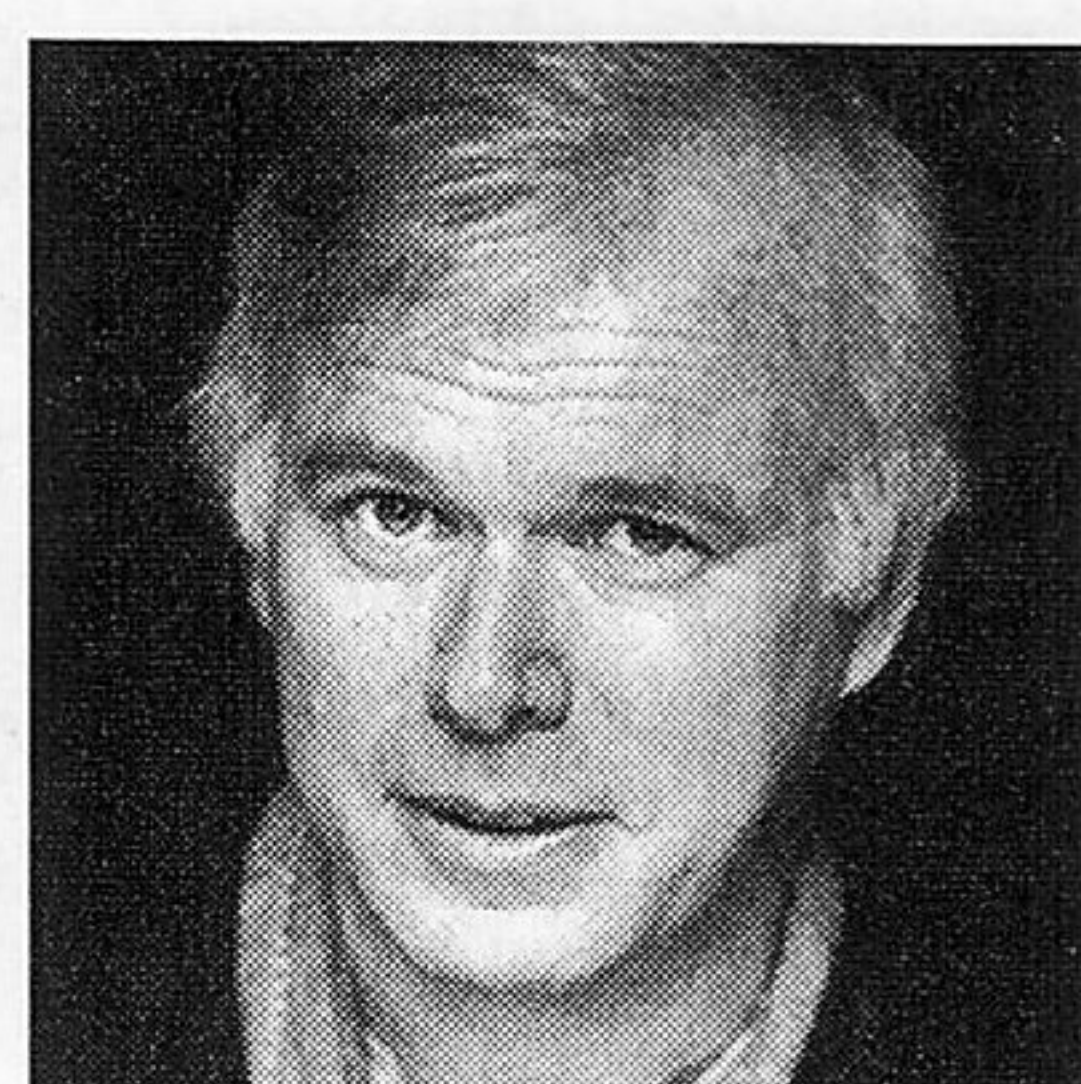
For one week each autumn, Irishman Mick Dowd is hired to dig up the bones in parts of his local cemetery to make room for the new arrivals. When it comes time for him to move those of his own late wife, strange rumors begin to surface regarding his involvement in her sudden death seven years before. Told with brutal humor and wicked irony, McDonagh's unique gift of storytelling explores the secrets of souls that will thrill and chill you down to your bones.

Martin McDonagh's theatrical debut in 1996 took London and New York by storm. *A Skull in Connemara* continues with his unique style of writing that is consistently praised as lyrical, frighteningly funny and taut with suspense. His other plays include the Tony Award-winning *The Beauty Queen of Leenane*, as well as *Lonesome West* and *The Cripple of Inishmaan*, and he has received both the Evening Standard Award and the George Devine Award for Most Promising Playwright.

ACT's American premiere, directed by Gordon Edelstein, will feature Zoanne LeRoy, Andrew McGinn, Kevin Tighe, and Christopher Evan Welch.



ZOANNE LEROY



KEVIN TIGHE

NEXT IN THE BULLITT

The 2000 Bullitt Season continues this summer with our unique solo performance series featuring two more of Seattle's most gifted and respected actors. All in the intimate setting of The Bullitt at ACT.

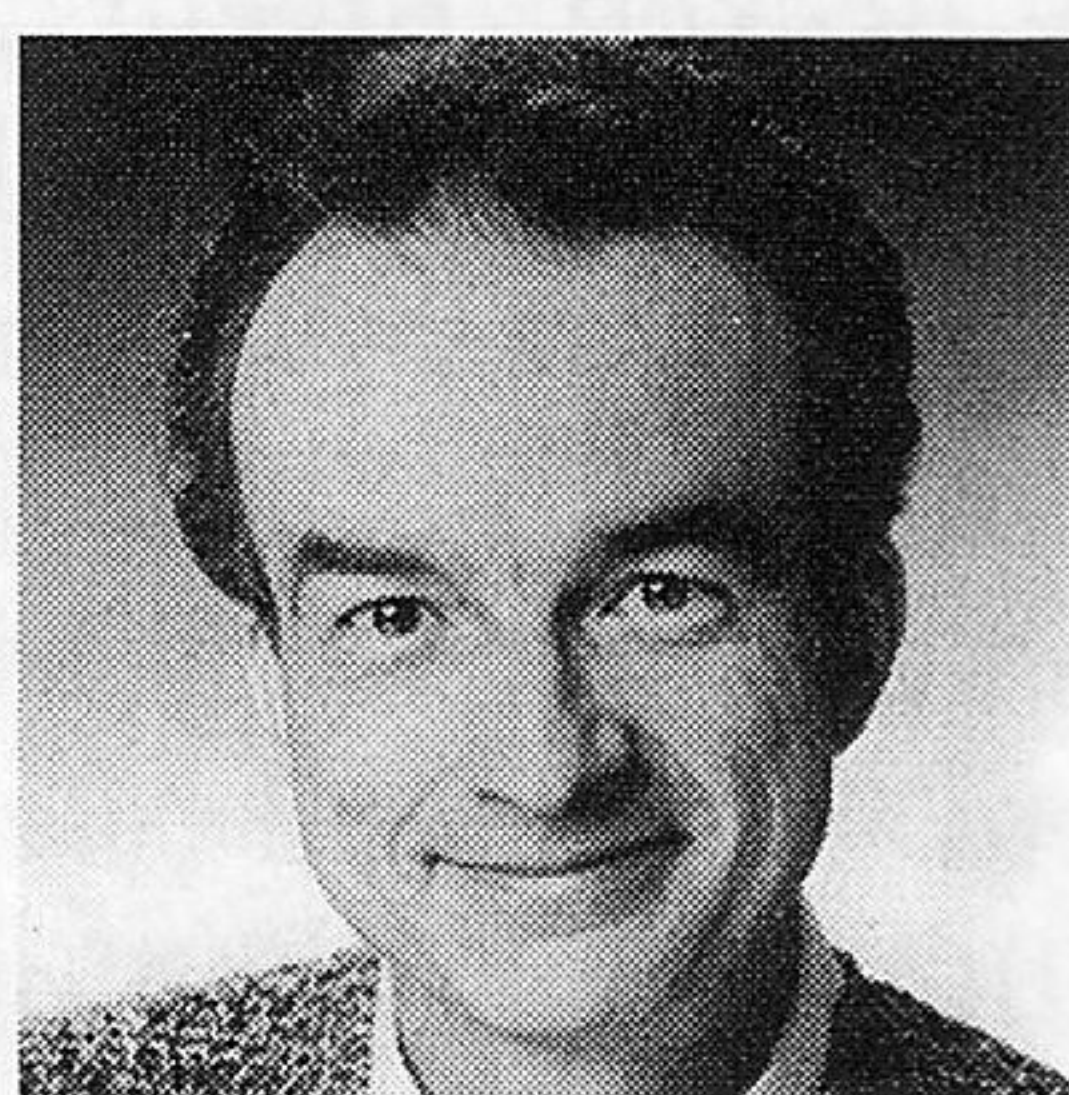
JULY 13-AUGUST 6

Via Dolorosa

by David Hare

Featuring David Pichette

Directed by Kurt Beattie



DAVID PICHETTE

Via Dolorosa is playwright David Hare's autobiographical tale of his journey to the Middle East, where he ventures deep into both Israeli and Palestinian territories to meet the people who live the headlines. Familiar ACT favorite David Pichette (*Communicating Doors*, *Side Man*) offers Hare's intelligent and sensitive observations on one of the most critical and impassioned conflicts of the century.

"Always, (Hare) offers offbeat humor amid contradictions, poignancy in moments of terror, and squalor plus humanity behind the political convictions."

—USA Today

"*Via Dolorosa* is stuffed to bursting with memorable accounts of characters of every political stripe and mood. And yes, they are great material."

—Wall Street Journal

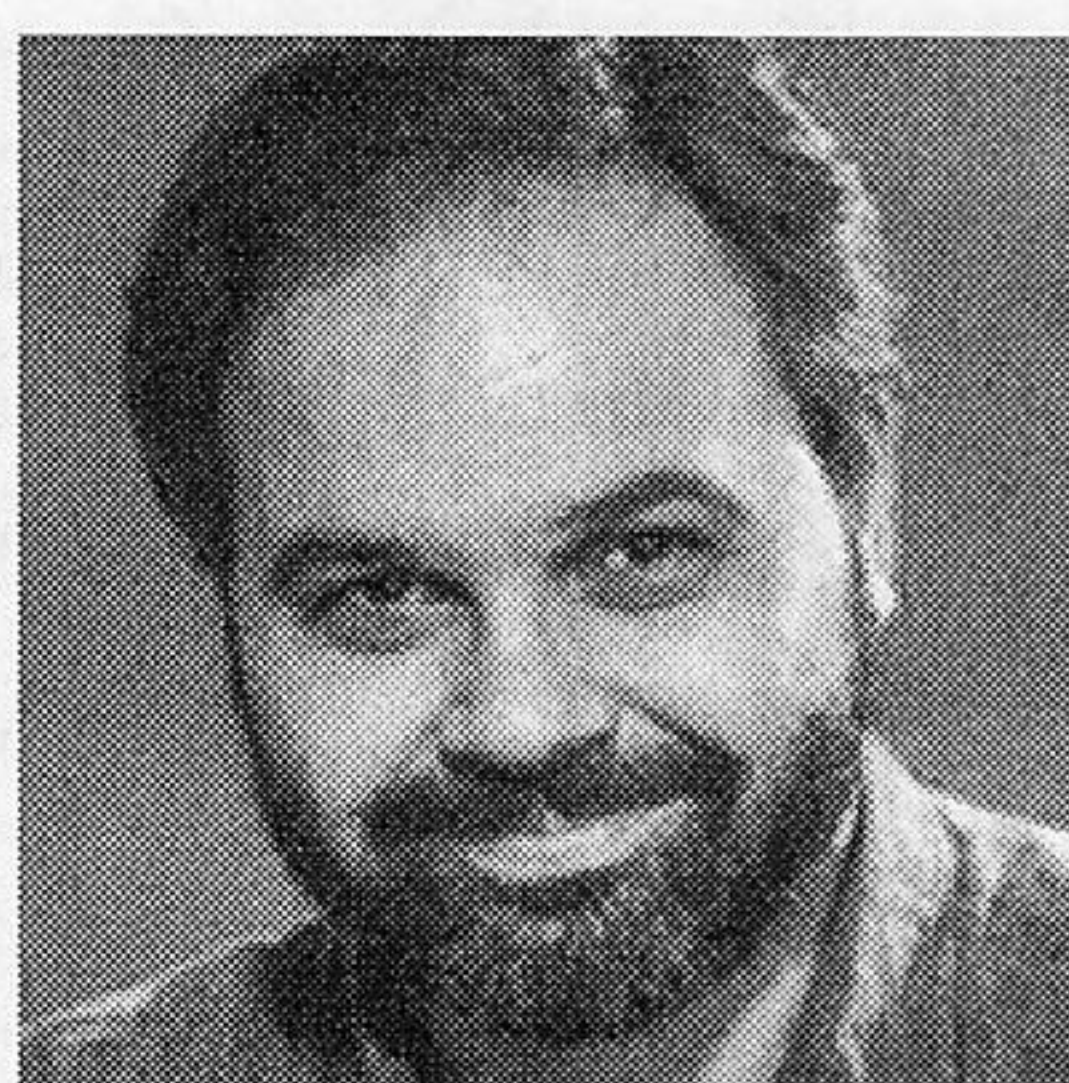
AUGUST 17-SEPTEMBER 10

St. Nicholas

by Conor McPherson

Featuring Laurence Ballard

Directed by Jeff Steitzer



LAURENCE BALLARD

From the author of *The Weir* comes this delectably droll tale of a theatre critic whose obsession with a mysterious actress leads him out of his dull and redundant life and into a London underworld of deception, seduction, and vampires! A rare solo turn by Laurence Ballard, veteran of more than 20 memorable performances at ACT including *Death of a Salesman*, *Lonely Planet*, *The Revengers' Comedies*, and *A Walk in the Woods*.

"...a devious tease of a tale...Mr. McPherson combines old-fashioned yarn-spinning skills with a canny grasp of the frayed contemporary psyche."

—The New York Times

Limited seating available. Order your tickets today!

All seats Bullitt \$15.

ACT Box Office 206-292-7676.

www.acttheatre.org

ACT BOARD & ADVISORY COUNCIL

GREGORY A. FALLS, *Founding Director*

BOARD OF TRUSTEES

DAVID E. SKINNER, *Chairman*

PHILIP M. CONDIT, *President*

ELLSWORTH C. ALVORD, JR., M.D.,

Immediate Past President

BRIAN K. BOGEN, *Vice President*

DONALD B. PATERSON, *Treasurer*

BRUCE T. GOTO, *Secretary*

WALTER WALKINSHAW, *Founding Secretary*

CATHERINE MCCONNELL,

VP, Institutional Advancement

NEIL B. MCCURDY,

VP, Community Relations

KRISTIN G. OLSON, *VP, Fund Development*

JOAN BAROKAS

CHARLES R. BLUMENFELD

MARGARET BULLITT

KEVIN CALLAGHAN

DANIEL D. EDERER

ANDREW FALLAT

JOHN H. FARIS

FRANK FLEETHAM

LAWTON HENRY HANSELL

SARA COMINGS HOPPIN

KATE JANEWAY

KEITH LARSON

LOUISE J. MCKINNEY

GLORIA MOSES

THOMAS MURPHY

DR. CHARLES NOLAN, *On Leave*

DOUGLAS E. NORBERG

ERIC PETTIGREW

KATHERINE L. RAFF

ALAN RAPPOPORT

CATHERINE ROACH

JO ANNE ROSEN

PATRICK M. SHANAHAN

JANE WARNER, *Ex Officio*

SHANNON R. WILLIAMS

GEORGE V. WILLOUGHBY

DR. WILLIAM WOMACK

CCA BOARD INTERNS

SHAWN BURNHAM

DOUGLAS G. LARSON

ADVISORY COUNCIL

ROSEMARY (WADE) BALLINGER

RICHARD C. CLOTFELTER

AUBREY DAVIS

P. CAMERON DeVORE

JEAN BURCH FALLS

CAROLYN H. GRINSTEIN

C. DAVID HUGHBANKS

JANE W. LYONS

RAY MOORE

NADINE H. MURRAY

PAMELA POWERS

BROOKS G. RAGEN

SAM RUBINSTEIN

GEORGE S. SCHAIRER

MRS. WALTER E. SCHOENFELD

MARVEL STEWART

SAMUEL N. STROUM

DR. ROBERT WILLKENS

DAVID E. WYMAN, JR.

JANE H. YERKES



dinner 5:30-10pm
post show menu until 1am
open every night
open for lunch Tuesday-Saturday 11:30-2
Pike Place Market • 206-682-3049

Seattle Youth Symphony Orchestras



invites you to honor conductor
Walter F. Cole

After 31 wonderful years with SYSO, Mr. Cole will step down from the podium. Join SYSO for his final concert and a reception on June 9th at Ballard High School at 7PM.

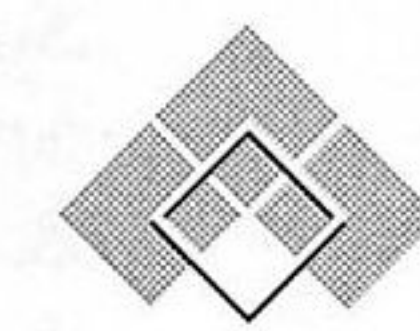
(206) 362-2300 | www.syso.org



- ◆ MAKES YOU MORE STREAMLINED
- ◆ ADJUSTS TO FIT YOU
- ◆ HIGH PERFORMANCE IN COMPETITIVE ENVIRONMENTS
- ◆ MAKES YOU MORE VISIBLE
- ◆ KEEPS YOUR HEAD TOGETHER

At Riddell Williams, we don't sell bike helmets, but we do know about protection, speed, and competitive advantage in business. Our 100 years of experience, combined with fresh perspectives on the ever-changing energy of business, creates countless opportunities for our clients. If that sounds interesting

to you, come see us at
www.riddellwilliams.com
or call 206-624-3600.



RIDDELL WILLIAMS P.S.

ATTORNEYS AT LAW

LAW, BUSINESS & STRAIGHT TALK

CONTRIBUTORS TO ACT's 1999-2000 SEASON CAMPAIGN

A Contemporary Theatre is deeply grateful for the generous support of many individuals, corporations, foundations, and government agencies. Special thanks to these outstanding supporters. (This list reflects gifts received prior to June, 2000.)

ACT BENEFACTORS

(\$50,000+)

The Allen Foundation for the Arts *
Buster & Nancy Alvord *
Katharyn A. Gerlich *
John Graham Foundation *
King County Arts Commission *
Kreielsheimer Foundation *
The Nordhoff Family *
PONCHO
Sam & Gladys Rubinstein *
Kayla Skinner *
Samuel & Althea Stroum Foundation *
TCG/Pew Charitable Trust
The Bagley Wright Fund *

FOUNDERS CIRCLE

(\$25,000 - \$49,999)

Philip Condit & Geda Maso *
Albert & Harriet H. Hoffenberg
Charitable Trusts
National Endowment for the Arts
Nesholm Family Foundation
Douglas & Nancy Norberg *
Seattle Arts Commission
The Shubert Foundation, Inc.

CONSERVATORS CIRCLE

(\$10,000 - \$24,999)

Jean Burch Falls
Katherine Janeway & Howard S. Wright
III
The McIntosh Foundation
Katherine & Douglass Raff
Herman & Faye Sarkowsky
Catherine & David E. Skinner *
Washington State Arts Commission
George & Colleen Willoughby *

PLAYWRIGHTS CIRCLE

(\$7,500 - \$9,999)

Kevin & Patricia Callaghan
Hedgebrook Foundation
Keith & Joan Larson
Shannon R. Williams

DIRECTORS CIRCLE

(\$5,000 - \$7,499)

Norman Archibald Charitable Foundation •
Brian & Lisa Bogen • Bruce & Marge
Bradburn • Daniel D. Ederer • Hellmut &
Marcy Golde • Horizons Foundation •
Gloria & David Moses • Charles & Eleanor
Nolan

PRODUCERS CIRCLE

(\$2,500 - \$4,999)

The Joan Alhadeff Family • Chap & Eve
Alvord • Bob & Clodagh Ash • Wade &
Stewart Ballinger • Larry & Joan Barokas •
The E.K. & Lillian F. Bishop Foundation •
Margaret Bullitt • The Bullitt Foundation •
Judith & Robert Cline • Priscilla Bullitt
Collins • Allan & Nora Davis • Marc &
Beth Droppert • Andrew Fallat • Bruce &
Dawn Goto • Lawton Henry Hansell and
John Hansell (in memory) • Jim Loder •
Catherine & Barry McConnell • Donald &
Bonnie Paterson • Brooks & Suzanne
Ragen • Christopher & Ginny Rice •
Catherine & Thurston Roach • Jo Anne &
Donald Rosen • George & Polly Schairer •
Strider Fund • United Way of King
County • David & Shirley Urdal • Walter &
Jean Walkinshaw • Jane & Leonard Yerkes

ARTISTS CIRCLE

(\$1,000 - \$2,499)

Allan & Anne Affleck • Richard &
Constance Albrecht • Richard & Nancy
Alvord • Jennifer Anderson • John &
Deetsy Armstrong • Robert M. Arnold •
Joseph & Dr. Lee Ashley • Bishop Fleet
Foundation • Charles Blumenfeld & Karla
Axell • Herman Blumenthal & Karen
Badgley • Jordan Buck • Bill Campbell •
Clement Family Foundation • The Clovis
Foundation • Ida Cole • Michael & Tamara

Corliss • John Currie • Sherry Anne
Davidson • Jane & David R. Davis •
Deloitte & Touche L.L.P. • John P.
Dickover & Valerie LaBerge • Patrick J. &
Lanie Dineen • Roberta & Michael Doyle •
Dupar Foundation • Jack & Karen Faris •
The Fred Jones Foundation • The Bill &
Melinda Gates Foundation • Natalie & Irvin
Gendler • Kenneth L. Greif • Sara Comings
Hoppin • Anna Cottle & Mary Alice Kier •
Ann Lennartz • Ali Long * Springcreek
Foundation • Wah & May Lui • Neil &
Ann McCurdy • Rev. Dr. & Mrs. Samuel B.
McKinney • Tim & Janet Merriam •
Nadine & John Murray • The Norcliffe
Foundation • Stephen & Anne Norman •
Kristin & Robert Olson • Susan
Porterfield • Pamela & Gilbert Powers •
Andrea & Alan Rabinowitz • Alan &
Barbara Rappoport • Bob & Dianne Russell
• Lance & Lucinda Richmond • Anne
Grosvenor Robinson • H. Stewart Ross •
Raman & Christina Sarin • Seattle
Foundation • Patrick M. & Kimberley
Shanahan • Simpson Reed Fund • Radm
Horton & Lei-Llah Smith • Jolanta &
Ronald Spaulding • Jack J. & Charlotte
Spitzer • Springcreek Foundation • Marty
& Carol Steele • Strider Fund • TCI Media
Services • Susan Trapnell & Erik Muller •
David & Joyce Veterane • Jean Viereck &
Robert Leventhal • Washington Women's
Foundation • Roberta Weeks • Robert &
Marjory Willkens • Douglas Wilson &
Kathleen Makielski • Marianne & Jim Wolf
• Charles & Barbara Wright • Gerard &
Pamela Zytznicki • 4 Anonymous

ACT SUSTAINERS

(\$500 - \$999)

William Adamucci • Jerry Anches • Eliza M.
Anderson • Bob & Rhoda Besecker •
Rachael Black & Ronald Barensten • Norm
& Lisa Bontje • Citigroup Foundation •
Hugh & Suzanne Clark • Mary Clise • Lois
& King Curtis • Philip & Barbara Cutler •
William Donnelly & Lori Patton • Pam &
Sturges Dorrance • Lynne & Robert
Dowdy • Betty Ederer • Klaus & Edith
Engel • Emily Evans & Kevin Wilson •
Margo & Rodger Fagerholm • Frank
Fleetham • The Gilman Foundation •
Michael J. & Jacquelyn M. Goldfarb •
Theodore & Sandra Greenlee • Malcolm
Haar • Timothy Hale • Clare Hansen •
Peter & Ann Hanson • Sylvia & Robert
Harris • Roger Harrison & Margaret
Harris • Steve Haynes • Kathryn Hinds •
Carol & Bruce Hosford • Gary & Parul
Houlahan • Mr. & Mrs. Edward Hunt •
Charles Kane • Charles & Lillian Kaplan •
Hal & Francoise Kerry • Owen King & Joan
Thacker • Ken & Sasa Kirkpatrick • Shirley
& Glenn Kloss • Janet & Gordon
Livengood • Mr. & Mrs. Bruce Lorig •
Jane W. & James A. Lyons • Collin
Madden • Alan Mandell • Jerry & Elizabeth
Mayberry • Frank & Anita Meyer • Col.
Norman D. Miller • Pam & Curt Miller •
Allison & Greg Mollner • Sallie & Lee
Morris • Bill & Mary Ann Mundy • Shirley
Newell • Chris Olson • Donald & Le Vere
Phelan • Eloise & Glen Rice, M.D. • Ben &
Esther Rosenbloom Foundation Inc. •
Raman & Christina Sarin • Joseph
Shapiro • M. Darrel & Barbara Sharrard •
Debra Sinick & David Ballenger • Jil
Spitzer-Fox & David B. Fox • Gail & David
Sunde • Lore & Henry Tenckhoff • Linda
& David Tennesen • Scott Thomson • John
& Marilyn Warner • Marion O. Williams •
Dr. William Womack • Mrs. T. Evans
Wyckoff • 4 Anonymous

ACT SUPPORTERS

(\$250 - \$499)

Bob & Tina Alexander • Sandra and Edward
Alto • Lauren & Susan Anstead • Jerry &
Judy Baker • Jane & Peter Barrett • Carole

Barron • Cynthia & Christopher Bayley •
Valentin Berger • Luann & Irving Bertram •
Laurie Besteman & Jack Lauderbaugh •
David & Inez Black • Tim Bueneman • Adele
Burnett • Henry & Olga Butler • Dr. William
Calvin & Dr. Katherine Graubard • Deborah
& Peter Card • Charles & Diana Carey •
Richard & Mikleane Chouinard • Mr. & Mrs.
Royce Church • Linda & Randy Clark • Jack
Yager & Kathryn Crandell • Hope Curtis •
Robert & Linda Dahl • Kirin Danby • Alan
& Barbara Davidoff • Aubrey & Henrietta
Davis • Vincent K. & Susan Del Rosso •
Paula Diehr & Frank Hughes • Daniel Dierks
& Sally Avenson • Anita & Jack Dingrani •
Mary & James Dunnam • Bruce Eckfeldt •
Sandy J. Eeds • Susan Lynn Ehlers • Frances
L. Engelman • Mordie & Marian Eskenazi •
Jim & Gretchen Faulstich • Claudia
Finkelstein • Mr. & Mrs. Edward Fisher •
Douglas & Mary Fleming • Albert & Toby
Franco • Phillip & Noreen Frink, Jr. • Jean
Garber & Clyde Moore • Robert & Eileen
Gilman • Anwar & Linda Girgis • Ann &
Boyd Givan • Tica Gordon • James &
Therese Gray • Jonathan Green & Jean
Komai-Green • Cheryl Hafer-Lott • James
Hailey • Elizabeth & Lewis J. Hale • Alice &
Dayne Hansen • Walter Hanson • Beth
Harmon • Sharon & Chapin Henry •
Howard & Judy Herrigel • David C.
Hoedemaker & Joni Henry Hoedemaker •
Mary Horvitz • Gwen & Randy Houser •
Doris & Lynn Huff • James & Dorothy
Hussey • Philip Irwin & Margaret Lake •
Sandra & Stuart Jacobson • Mark & Laura
Jennings • The Jewish Community
Endowment Fund • Lew & Sonia Johnson •
Philip & Marcia Johnson • Linda Kaz •
Doug & Camille Klunder • Leslie Koch •
George & Linda Lamb • Elizabeth & Robert
Lamson • Bob & Elizabeth Landau • Betty
Laughlin • Janice L. Levis • Larry & Phyllis
Loeb • Kenneth & Peggy Long • Mr. & Mrs.
Lee Loveland • C. Gilbert Lynn • Don &
Fane Lytton • R. Alex & Lynn Macdonald •
Charles & Aileen Mangham • Leslie
Mattson • Marcella McCaffray • Mary
McEntire • Margaret McKeown & Peter
Cowhey • Dr. & Mrs. John Mensher • Linda
Maxson & Toby Miller • Mark & Susan
Minerich • Constance & Michael Mitchell •
Thomas & Ellenor Naden • J. Shirley Nagy •
Roland & Deanna Nelson • Joyce Nessif •
Mr. & Mrs. Gary R. Neumann • Linda &
George Ojemann • Pacific Architects • Steve
& Sandra Parker • Marvin Parsons • Molly
Pengra • Eric & Jada Pettigrew • Kevin
Phaup & Cathy Wissink • Jackie Phillips •
Mrs. GNP • Marlene & Morris Piha • Beth
& Bill Pitt • Marianna & Andrew Price •
Ronald & Sharon Quarles • Denise Raasina •
Jean Radford • Judy Soferman & Marc
Rosenshein • Nathan & Judy Ross •
Stephanie Ryan & Craig Fleck • Joan &
Werner Samson • Ron Schaevitz • Karen &
Patrick Scott • Sheila Scott • Randolph &
Lynn Beaty Sealey • Bob & Sandra
Seidensticker • George Sheppard • Michele
& Andrew Sherman • David & Susan Sigl •
Sarah Singer • Charles Sitkin • Linda Spain
Watkins • Sonia Spear • Darlene & Victor
Spino • Mary Jo & Michael Stansbury •
Lawrence Stein & Patricia Cogen • Edgar &
Gail Steinitz • Thomas P. Struthers, Jr. • Jane
Subjally • Dan & Susan Sullivan • Judy
Pigott Swenson • Mikal & Lynn Thomsen •
Christopher Troth & Mary Jerome • Janet
Upjohn • Barbara Volin • James & Mary
Wallace • Jane & Daniel Warner • Toby &
Linda Warson • Kenneth Weiner & Katherine
Fletcher • Brant & Cindy Weyer, Sajasa
Construction • Edith & Brian Whitfield •
Karen & Peter Wickstrand • Winslow &
Catherine Wright • David Zank •
7 Anonymous

* These individuals and foundations, in addition to supporting ACT's Season Fund, have also generously supported ACT's Capitalization Fund with a gift of \$25,000 or more.

CORPORATE PARTNER CONTRIBUTORS

The following companies have generously supported ACT as a part of the 1999-2000 Corporate Partnership Program.

CORPORATE INVESTORS

(\$100,000+)

The Boeing Company
Corporate Council for the Arts

CORPORATE PARTNERS

(\$25,000 - \$99,999)

Microsoft Corporation
SAFECO Corporation
SAFECO Matching Funds

CORPORATE CO-SPONSORS

(\$10,000 - \$24,999)

A & E Television Networks

CORPORATE UNDERWRITERS

(\$5,000 - \$9,999)

Alaskan Copper & Brass
Company/Alaskan Copper
Works
BMW of Seattle
Lowell-Hunt Catering
Rainier Investment Management,
Inc.
Seafirst Bank
Shadowcatcher Entertainment
Special Events
Wright Runstad & Company

CORPORATE ASSOCIATES

(\$2,000 - \$4,999)

Acordia Northwest Inc.
Callison Architecture
Davis Wright Tremaine LLP
Ederer Investments Company
Sellen Construction
Totem Resources
US WEST Foundation

CORPORATE CIRCLE MEMBERS

(\$1,000 - \$1,999)

Diamond Parking
Duganair Technologies
Gull Industries, Inc.
Larry's Markets
Nissho Iwai American
Corporation
Riddell Williams, P.S.
US Bank
Western Washington Beverage

MERCHANTS GUILD

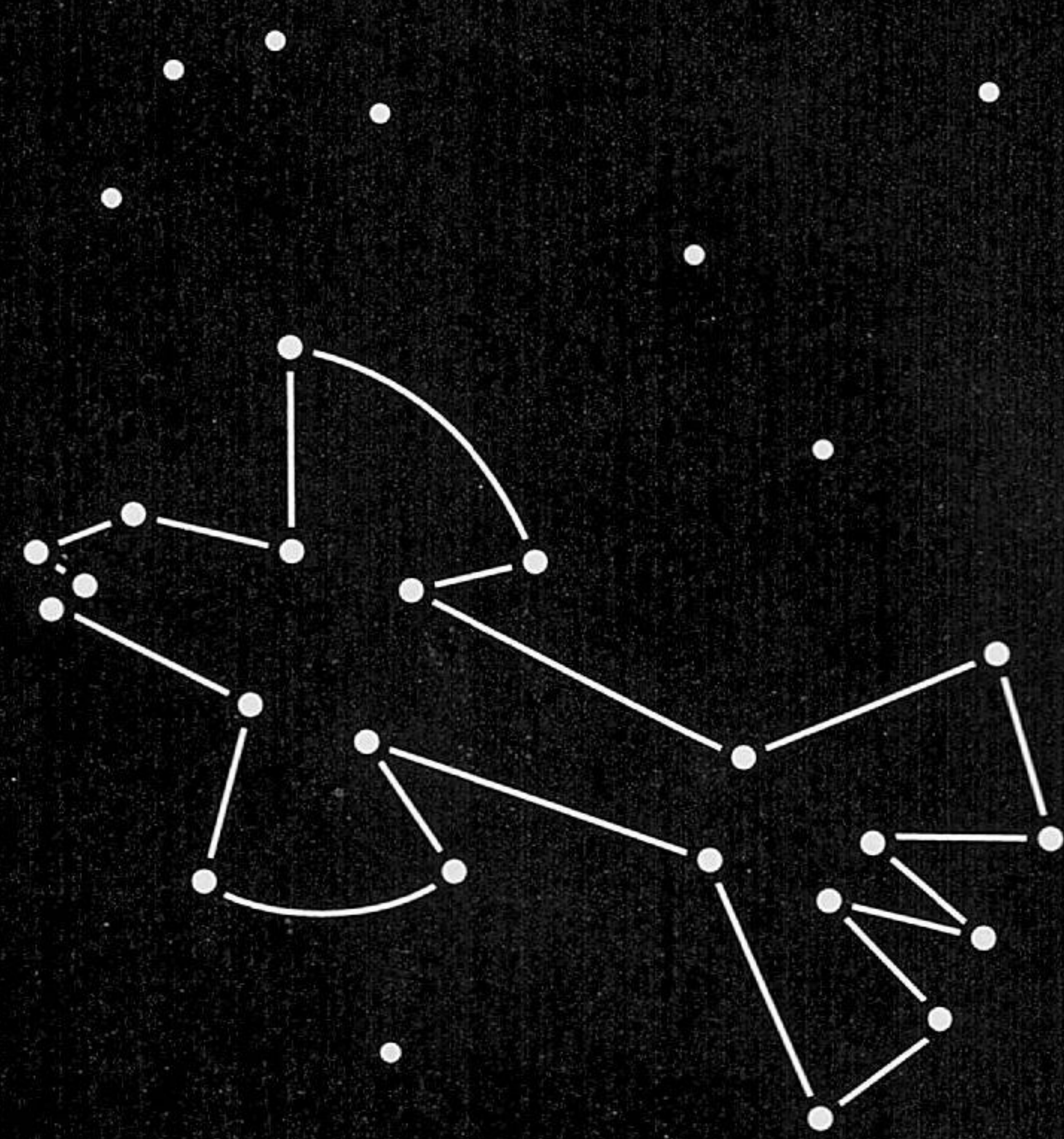
(\$500 - \$999)

The Austin Company
Ben Bridge Jeweler
Foushee & Associates
Pine Street Development
Anonymous

RICHLY WHIMSICAL LOOK
WITH HERITAGE STYLE
MENU AND COMFORT



1933 Fifth Avenue, Seattle
(206) 441-6330



Late Night Fish.

Dinner
Until 1:00 AM
Every Night

Bar Open
Until 2:00 AM

First & Bell
206-728-8595



It's buy low,
sell high, right?*

*42% of ENCORE readers use a stock broker.
— GMA Research 1997

Advertise in ENCORE.

ENCORE

206.443.0445
encoremidiagroup.com

ACT STAFF

GORDON EDELSTEIN
Artistic Director

JIM LODER
Managing Director

VITO ZINGARELLI
Producing Director

ARTISTIC

ELIZABETH CRANE
Producing Associate

LIZ ENGELMAN
*Literary Manager &
Dramaturg*

MARGARET LAYNE
*Artistic Associate & Casting
Director*

CLARE ARONOW
Artistic Assistant

COURTNEY BITNER
Artistic Intern

ADMINISTRATION

CLAUDETTE EVANS
General Manager

GARTHA FERRAND
*Assistant to the Managing
Director*

PAUL N. KRAMER
Systems Administrator

LINAYE SOLOMON
Receptionist

TED HEARD
Facilities Manager

HARLEY REES
Ticket Operations Manager

RACHEL WELKER
Assistant Box Office Manager

JERUSHA TEETER
KEIKO ICHINOSE
DEBRA SAROW
STEPHANIE TIMM
DEREK PAVONE
Box Office Assistants

SARA BATHUM
House Manager

SARA MAY
AMBER ALLEN
ELISABETH A. PRICE
CAREY F. STUMM
SUZANNE TURBEVILLE
ALAN MOTLEY
CARLY SKONE
SCOTT SIEGERT
ANTHONY GARCEA
STEPHEN JACKSON
House Staff

CHRISTINE JEW
Usher Coordinator

GARY SMITH
Sign Interpretation Coordinator

JESSE MINKERT
Audio Description Coordinator

COMMUNICATIONS

NICOLE CREVELING
Marketing Director

GARY D. TUCKER
PR Manager

BARRY ALLAR
Communications Manager

ALLISON MOLLNER
Corporate Marketing Manager

SARAH ESCH
*Communications Assistant &
Group Sales Coordinator*

JACKIE PHILLIPS
Graphic Designer

JAYME POWERS
Marketing Manager

NANCY PRINGLE
PR Intern

CHRIS BENNION
Photographic Services

DEVELOPMENT

ASHLEY LEASURE
Development Director

SHAWNA AKIN
Development Manager

DAVID KAZ
Grants Manager

CHRISTINE EXLINE
*Development Operations &
Website Manager*

ADAM MOOMEY
Special Events Manager

FINANCE

DEAN BARNEY
Finance Director

RENEE D. REILLY
Accounting Manager

DEANNE ENGLAND
REBEKAH WONG
Accounting Assistants

PRODUCTION

ANN CIECKO
Assistant Producing Director

SUSAN E. JETER
Company Manager

COLLEEN JONES
Technical Production Assistant

STAGE MANAGEMENT

JEFFREY K. HANSON
Production Stage Manager

ANNE KEARSON
Resident Stage Manager

STEPHANIE TOSTE
Production Assistant

COSTUME DEPARTMENTS

CAROLYN KEIM
Costume Director

CONNIE RINCHIUSO
Costume Shop Foreman

JEANNA M. GOMEZ
Costume Assistant

SALLY MELLIS
Wardrobe Master

KIM DANCY
Lead Dresser

JOYCE DEGENFELDER
Wig Master

SCENIC DEPARTMENTS

STEVE COULTER
Technical Director

JOHN BARNETT
Assistant Technical Director

JAMES E. PETERS
Master Scenic Carpenter

JAMES NICHOLS
AUSTIN SMART
ALEX KORAHAI
Scenic Carpenters

STEVEN LA ROSE
Scenic Charge Artist

MONA LANG
Assistant Charge Artist

CHERYL TOMBLINSON
Properties Master

GILES THOMPSON
Master Properties Artisan

STAGE OPERATIONS

ANDREW BALL
Stage Operations Supervisor

SILAS AEMMER
Master Stage Carpenter

KAREN ANDERSON
Master Electrician

DOMINIC KRAMERS
Master Sound Engineer

SCENERY, STAGE AND
COSTUME WORK IS
PERFORMED BY EMPLOYEES
REPRESENTED BY I.A.T.S.E.
LOCALS NO. 15, 488, AND
887.