

ENCORE

我們的美國朋友

AGES.
RED SPIES AT TOP
Army Reveals Startling Operations in Tokyo Before Attack on Pearl Harbor.
TIP ON THRUST AT RUSSIA
Knowledge That Japs Would Not Attack Siberia Set Up Defense Against Nazis.
STILL MAY BE MENACE
MacArthur Says Remnants of Ring Could Be Active in World Capitals.
(ADDITIONAL STORIES AND ILLUSTRATIONS RELATING TO THE SOVIET RING IN THE FAR EAST SEE PAGE 5.)
DAYTON MOORE.
Feb.
at spy

Agnes Smedley:

Our American Friend

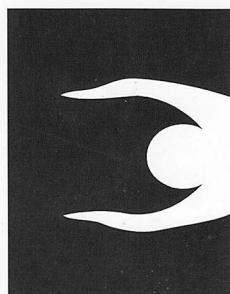
PETERSON
ART
FURNITURE



JILL DAVIS, GLASS TABLECLOTH TABLE

A Gallery of HANDCRAFTED
STUDIO FURNITURE, FEATURING FINE
CABINETRY, UNIQUE METALWORK,
DECORATIVE ACCESSORIES AND
Gift Registry.

122 CENTRAL Way
Kirkland, WA 98033
206•827•8053



ERSKINE
FITNESS

A Pilates-based exercise studio.

The best-kept exercise secret of the
dance world is now available to you.
Safe, effective personalized fitness
training by appointment.

On lower Queen Anne.

174 Roy Street
Seattle, WA 98109
206.286.8991

ENCORE
PUBLISHING, INC.

Agnes Smedley: Our American Friend

By Doris Baizley

Directed by Steven E. Alter

September 11 – October 10, 1993

Table of Contents

- 3 ACT Board and Staff
- 4 General Information
- 6 The Birth of a New Order
- 7 Chronology
- 9 Title Page
- 10 The Actors
- 14 Next at ACT
- 15 Major Contributors to ACT's 1992-93 Annual Fund

Cover and poster design by studio OZUBKO.

A Contemporary Theatre
100 W. Roy Street
Seattle, WA 98119
Administration: 285-3220
Box Office: 285-5110
TDD: 285-3224

ENCORE PUBLISHING, INC.

Publisher
Paul P. Heppner
Founder
Philbrook Heppner
Controller
Candace Frankinburger
Production Manager
Barb Switzer
ACT Editor
Barry Allar
ACT Assistant Editor
Noreen O'Brien
Publications Coordinator
Denise Russell
Account Executives
Lenore Waldron
Robert Pfoutz
Paul Greene
Caroline B. LaRocca

ENCORE publications are produced for:

A Contemporary Theatre, Pacific
Northwest Ballet, Broadway Center for the
Performing Arts, Seattle Chamber Music
Festival, Seattle International Music Festival,
Seattle Opera, Seattle Repertory Theatre,
and Seattle Symphony.

ENCORE Publishing, Inc.
87 Wall Street
Seattle, WA 98121
(206) 443.0445
FAX (206) 443.1246

All rights reserved. Reproduction
without written permission is prohibited.
ENCORE Publishing, Inc. is a member of
the Greater Seattle Chamber of Commerce,
Council for Corporate Responsibility and
Corporate Council for the Arts.
Printed by Times Litho.

ACT Board and Staff

Gregory A. Falls
Founding Director

Board of Trustees

Douglas E. Norberg
Chairman

Katherine L. Raff
President

George Willoughby, Jr.
Vice President

Walter Walkinshaw
Secretary

Patrick J. Dineen
Treasurer

Ellsworth C. Alvord, Jr., M.D.

Victoria D. Anderson

Deetsy Armstrong

Brian Bogen

Gail Mason Brilling

Margaret Bullitt

Philip M. Condit

Aubrey Davis

Bert Downey

Margo Fagerholm

Andrew Fallat

Jean Burch Falls

Frank Fleetham

Katharyn A. Gerlich

Nina B. Hale

Sara Comings Hoppin

George Hutchinson

David Landes

Keith Larson

Jane W. Lyons

Louise McKinney

Jane H. Milholland

Gloria Moses

Dr. Charles Nolan

Donald B. Paterson

Sherry Paulsell

Suzanne Ragen

Catherine Roach

Jo Anne Rosen

Gilbert Scherer

David E. Skinner

Nadine H. Troyer

Jane Warner, *ex officio*

Kenneth S. Weiner

Dr. William Womack

Advisory Council

Rosemary (Wade) Ballinger

Richard Clotfelter

P. Cameron DeVore

Gregory A. Falls

Jacquetta Blanchett Freeman

Carolyn H. Grinstein

C. David Hughbanks

George Lhamon

Senator Ray Moore

Nadine H. Murray

Pamela Powers

Brooks G. Ragen

Sam Rubinstein

George S. Schairer

Mrs. Walter E. Schoenfeld

Marvel Stewart

Samuel N. Stroum

Dr. Robert Willkens

David E. Wyman, Jr.

Artistic Staff

Jeff Steitzer
Artistic Director

Steven E. Alter
Artistic Associate/Literary Manager

Administrative Staff
Susan Trapnell Moritz

Managing Director

Gartha Ferrand
Administrative Assistant

Chris Chambreau
Computer Coordinator

Brian Koceski
Receptionist

Teri Mumme
Marketing Director

Barry Allar
Press & Public Relations Director

Noreen O'Brien
Marketing/PR Assistant

Mary K. Stevens
Development Director

Tim Crow
Capital Campaign Director

Anne-Marie Guerrero
Development Associate

David Gow
Development Assistant

Mark Crawford
Operations Director

Patricia Burget
Audience Services Director

Laura Robbins
Box Office & Group Sales Coordinator

Tracy DeCroe
Kirsten Erickson
Heather Mueller
Kathy Robertson
Thom Sweeney
Box Office Assistants

Salah Mason
House Manager

Ben Scholtz
Assistant House Manager

Nancy Alexander
Candace Alston
Elias Avinger
Marie Barry
Justin Gallop
Claudine Hansen
Gretchen O'Connell
Lauren J. Yarmuth
House Staff

Chris Bennion
Photographic Services

All Seasons Cleaning
Janitorial Service

Gary Smith
Sign-Interpreted Performances Coordinator

Jesse Minkert
Audio Description Coordinator

Production Staff

Phil Schermer
Producing Director

James Verdery
General Manager

Mary Corrales-Diaz
Assistant Production Manager

Renee D. Reilly
Bookkeeper

Jonathan Rosario
Bookkeeping Assistant

Carolyn Keim
Costume Shop Manager

Connie Rinchiuso
Cutter

Paula Tankersley
Stitcher

Sally Mellis
Dresser

Joyce Degenfelder
Wig Master

Richard Hogle
Design Coordinator

Sharon McNeil
Scenic Artist

Julia Franz
Painter

Scott Atherton
Lead Carpenter/Shop Foreman (IATSE #15)

Richard Bruvold
Shop Carpenter (IATSE #15)

Brian Morningstar
Apprentice Carpenter

Shawn Robertson
Properties Master

Sparkle Finley
Properties Assistant

George Johnson
Staff Electrician

Mary Corrales-Diaz
Jeffrey K. Hanson
Stage Management

Robert Cloyes
Kathryn Cowles
Jill Marie Norling
Production Apprentices

Aura Myerson
Student Intern

Steve Collins
Sound Operator

Announcing our 1993 Portraits of The Past Fall Fashion Show

Together at last, both men and women's collections in one incredible fashion show.

Join us as we celebrate Fall by previewing the latest collections from DKNY, Ellen Tracy, Calvin Klein, Liz Claiborne, Jones New York, Polo by Ralph Lauren, Tommy Hilfiger, Nautica, Colours by Alexander Julian and more.

The shows will be held at our Downtown Seattle Store, in the Stewart Street Room on the Third Floor.

Make it a date.

Monday, September 20, 1993

12:00 p.m. – Doors open,
Luncheon

12:30 p.m. – Fashion Show
\$18 per ticket, plus tax.

Tuesday, September 21, 1993

6:00 p.m. – Doors open,
Hors d'oeuvre Buffet

6:45 p.m. – Fashion Show
\$18 per ticket, plus tax.

Reservations are now being accepted. Tickets are available at the Downtown Seattle "At Your Service" counter on the main floor. To order by phone call 344-6221 or 344-8709. You may use your Bon Marché, American Express®, Visa® and Mastercard® accounts.

The **BON MARCHÉ**

BLUE RIBBON SCHOOL
Selected by U.S. Dept. of Education



**ETON
SCHOOL**

founded 1978

***I Am Becoming...
learning for lifelong growth***

Elementary • Middle School
Contemporary Montessori

2701 Bellevue - Redmond Road
Bellevue, Washington 98008

Phone 881-4230

THE FINE ART OF ATTRACTING ATTENTION



**HOW TO GET
YOUR ADVERTISING
NOTICED BY ALL
THE RIGHT PEOPLE**

FOR A FREE BROCHURE CALL

443-0445

ENCORE PUBLISHING, INC.

General Information

ACCESS

A Contemporary Theatre is pleased to offer these services, made possible in part by The Norcliffe Fund and The Glaser Foundation. The building itself is accessible for the physically challenged.

ACT offers **sign-interpreted performances** on the following dates (all Fridays) at 8 p.m.:

Agnes Smedley: Our American Friend -
October 1

Dreams from a Summer House -
November 5

Audio-described performances are provided by AVIA (Arts and Visually Impaired Audiences), funded in part by The Norcliffe Fund, the Seattle Arts Commission, the King County Arts Commission, and the Washington State Arts Commission.

They are scheduled for the following Sundays at 7 p.m.:

Agnes Smedley: Our American Friend -
October 3

Dreams from a Summer House -
November 7

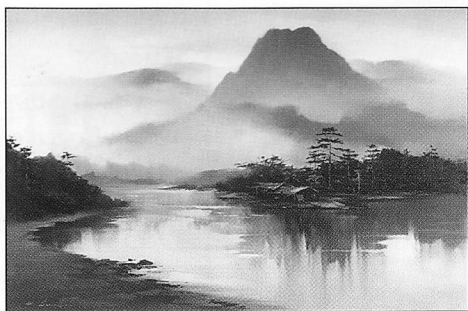
Assistive listening devices are available at no charge for all performances (except those which are audio-described). They are provided by **Ackerley Communications, Inc.** Please see the House Manager for them.

Tickets, Please

"Tickets, Please" is a program developed by ACT and Leadership Tomorrow that offers complimentary tickets to community groups and social service agencies. To become a private or corporate sponsor of this program, please contact the Development Office at 285-3220.

Large print programs are available upon request.

UNDER NEW DIRECTION



River Dusk
36" x 48"
H. Leung

The Lawson Gallery is pleased to announce it is now under the new direction of *Art Find Publishing*. *Art Find* searches worldwide to locate gifted artists and exceptional works of art at investor prices. We are delighted to bring these special artists and their works to Seattle art patrons.

We cordially invite you to visit our newly remodeled gallery to view the works of over 40 exciting local, national and international artists. We feature original works and prints. We also can help you locate special pieces and provide professional framing services. Look for our upcoming special exhibitions.

Art Find — The Lawson Gallery

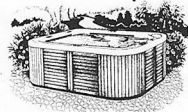
2207 First Avenue / Seattle, WA 98121 / 443-9515

Hours: Mon-Wed 10 am-7 pm / Thurs-Sat 10 am-9 pm / Sunday 12 pm-5 pm

Freudian therapy.
Jungian therapy.
Primal therapy.
Radical therapy.
Sexual therapy.
Hypnotherapy.
No therapy.

Hydrotherapy?

There are many ways to get in touch with your feelings, but



only one that lets you go home and feel

like a million bucks for under ten dollars a month.



So, relax in a

Hot Spring Spa and enjoy the maximum comfort and efficiency of America's #1 best seller.

OLYMPIC
HOT TUB COMPANY
The hottest name in spas™

Call us in Seattle
for your free brochure

206-634-0700

Open 7 days a week

The Birth of a New Order by Deborah Frockt

The People's Republic of China may have been the culmination of the Chinese Revolution that was born in 1911. After centuries of dynastic rule and foreign exploitation of Chinese economic resources, the last Qing emperor was driven from the throne. Installed as president was Dr. Sun Yat-sen, the father of the Chinese Republican movement. Although universally admired and respected among the Chinese people, Sun's tenure as president was short-lived. The new Republic had no money and was, therefore, reliant upon the loans of foreign banks. The cash-flow was severely hampered, however, as banks refused to lend the Republic money as long as it was led by a "dangerous radical." Under these circumstances, Sun's power base quickly eroded. He was then succeeded by army strongman Yuan Shikai as president. After Yuan's death, the already weakened Republic disintegrated, and China came to be chaotically and violently ruled by autonomous military governors and feudal warlords.

During World War I, Japan's imperialist ambitions toward China became increasingly pronounced, and domination by their eastern neighbors was to afflict the Chinese until the end of World War II. In response to the signing of the Treaty of Versailles in 1919, the May



Smedley and friends, c. 1937.

Fourth Movement was born as Chinese students protested the ceding of German interests in China to Japan. It was on the heels of this upheaval that Mao Zedong and Chen Duxiu organized the Chinese Communist Party in 1921. The Communists quickly became

known as the most radical and anti-Western of China's revolutionary movements, and thus grew rapidly.

When Sun Yat-sen died in 1924, the broad coalition that was the Nationalist Party (of which the Communists were a part) was shattered as the military leader Chiang Kai-shek began his ascent. At

first, Chiang relied on the Communists as allies, but in 1927 he turned on his former partners. The Communists, upon Russian advice, organized a series of urban uprisings which were bloodily defeated by Chiang. At this point, Mao broke with the Russian Communists, declaring that urban revolution was bound to fail in China. Instead, he argued that victory in the

China must be won with the full support and cooperation of the peasants, who were not only the vast majority but also the most oppressed.

After invading Manchuria in 1931 and facing no resistance from Chiang's army, the Japanese installed a puppet state with their eyes set on further conquest. Despite the humiliating defeat of foreign invasion, Chiang was convinced that nothing was more dangerous than the spread of Communism. As a result, he began a brutal liquidation policy against the Communists. In 1934, to escape extermination camps, 100,000 Communists began the 6000-mile trek northwards that became known as the Long March. Fewer than 10,000 people survived a year later when the Red Army arrived in Yen'an. It was during this period that the nucleus of Communist leadership solidified with Mao as supreme leader flanked by Chu Teh (Zhu De) as his military chief of staff and Chou En-lai as his administrator.

In 1936, Chiang was finally forced to

Harnessing
the power of
the peasants
was the
definitive,
winning
weapon.



125 Boren N.
SEATTLE
The Original!
682-2513
18000 Pacific Hwy S.
SEA-TAC
Live Entertainment!
243-9500

Great Play. Let's Eat!

24 hour performances that really cook
...and the results are good enough to eat!

...be a part of Seattle's Counter Culture.



join forces with the Communists to fight Japanese aggression. Despite a united Chinese front, 1937 saw the continuation of Japanese expansion throughout China. Yen'an, however, remained under Communist control throughout World War II. There, Mao was able to put his theories of peasant communism to work, taking land from the landlords and distributing it to the workers. The Red Army, in addition to waging guerrilla warfare against the Japanese, worked alongside the common people, building roads, schools and hospitals.

After Japan's defeat and withdrawal from China in 1945, American diplomats tried to negotiate a Nationalist-Communist coalition which would unite China. The armies of Chiang and Mao were never to fight together again, however, and in 1946, civil war erupted. Despite the superior arms the Nationalists

received from the United States, the Communists were ultimately victorious. As Mao had predicted, harnessing the power of the peasants was the definitive, winning weapon. In the climactic battle at Huaihai in early 1949, whole divisions of Nationalist troops turned their guns on their officers and deserted to the Communist side. Nationalist tanks were futile dinosaurs, unable to cross miles of defensive ditches dug by peasants under Communist direction.

As Mao Zedong stood on the Gate of Heavenly Peace in front of Beijing's Forbidden City on October 1, 1949 proclaiming the founding of the People's Republic of China, a new order was born. A hierarchical and repressive way of life, twenty-five centuries old, resting on a foundation of feudalism, was cast aside forever.

A Remarkable Life

- 1892** Agnes Smedley is born in Osgood, Missouri.
- 1904-10** Her family begins an itinerant lifestyle as her father seeks mining work in the West.
- 1911** Smedley enrolls at the Tempe Normal School. Here, she begins her career as a journalist, writing editorials that champion the needs of the underprivileged.
- 1912** She marries Ernest Brundin, a Socialist, in San Francisco.
- 1916** She joins the Socialist Party, even though she is already separated from Ernest.
- 1917-19** After arriving in New York, Smedley begins writing for *The Call*, a Socialist paper. She works with Margaret Sanger and the birth control movement. As a result of the Espionage Age, she is jailed for 6 months because of her association with the Indian Freedom Movement.
- 1920** With espionage charges still pending, Smedley sails for Berlin without a passport. There she continues her work for the Indian Revolutionary Committee and she lives with Viren Chattopadhyaya, an Indian leader, in common-law marriage.
- 1929** *Daughter of Earth*, Smedley's autobiographical novel, is published. She arrives in China.
- 1931** Smedley and Harold Issacs found the radical Shanghai periodical *China Forum*.
- 1932** Smedley and Issacs complete *Five Years of Guomindang Reaction*, a bitter indictment of Chiang's government. She is subject to surveillance and harassment by Guomindang and foreign police. With Madame Sun Yat-sen and others, she forms the League of Civil Rights to help publicize the Chinese predicament abroad. She tries unsuccessfully to establish a birth control clinic in Shanghai.
- 1933** *Chinese Destinies*, a collection of Smedley's writings about China, is published.
- 1934** She gathers material for her work on the Jiangxi Soviet, *China's Red Army Marches*.
- 1937** Smedley arrives in Communist controlled Yen'an and begins work on Chu Teh's biography. She applies for membership to the Chinese Communist Party, but her application is rejected.
- 1938** She reports from the front with the Communist-led New Fourth Army. Her account of this time is published in 1943 as *Battle Hymn of China*.
- 1940** Ill health forces Smedley to leave China for the United States.
- 1941-48** There is a relatively calm period for her, as she continues her work on China. She writes for *The New Republic* and spends time at the writers' colony Yaddo.
- 1949** The United States government releases a report accusing Smedley of having been a Soviet spy since the early 1930s. Even though she goes to court to deny these allegations, the virulent anti-communist mania of the period robs her of enough work to support herself. She goes to England to await a visa for her return to China and continues work on Chu's biography.
- 1950** Smedley dies of complications resulting from abdominal surgery. *The Great Road*, her account of Chu's life, is published posthumously.

Scaylea

Joseph Scaylea's Our Northwest

July 24, 1993 - April 10, 1994

50 years of Northwest photojournalism

with over 200 photographs on view

Open daily 10am to 5pm, 324-1126



MUSEUM
OF HISTORY & INDUSTRY

BEST SEAT IN THE HOUSE. OR GARDEN.



Cape Cod Comfys
Famous Resort Chairs...
the ultimate in outdoor
and indoor comfort.

Cedar\$189.00

Pine\$159.00

Stained\$249.00

Please visit our showroom,
or call for our free brochure.

**CAPE COD
COMFYS**

3413 FREMONT N. • SEATTLE
545-4309

SINCE 1890

WESTERN PIANOS

the official supplier
of pianos to the

SEATTLE OPERA



Schimmel • Samick • Kawai
Mason & Hamlin • Wurlitzer

BELLEVUE

FEDERAL WAY

NORTH

SOUTH

10644 NE 8th

2012 S. 320th

13018 Lake City Wy NE

17366 Southcenter Pkwy

A Contemporary Theatre

Gregory A. Falls
Founding Director

Jeff Steitzer
Artistic Director

Phil Schermer
Producing Director

Susan Trapnell Moritz
Managing Director

presents
the World Premiere of
**Agnes Smedley:
Our American Friend**
by Doris Baizley

Director	Steven E. Alter
Set Designer	Shelley Henze Schermer
Costume Designer	Jeanne Arnold
Lighting Designer	Michael Wellborn
Sound Designer	Steven M. Klein
Choreographer	Mayme Paul-Thompson
Chinese Movement	Ernest Abuba
Dramaturg	Deborah Frockt
Stage Manager	Mary H. Corrales-Diaz

The Cast

Agnes Smedley	Susan Barnes
Chu Teh (Zhu De)	Ernest Abuba
Lily Wu (Wu Guangwei)	Jeanne Sakata
The Guard	David Mong

The time is 1937.
The action takes place in Yen'an, China, and in Agnes's memory.
This performance runs without an intermission.

Los Angeles casting by Lisa Zarowin

This production is co-sponsored by the Seattle Arts Commission.
Agnes Smedley: Our American Friend was first developed at The Gathering at Bigfork, Montana.

A Contemporary Theatre is a member of the League of Resident Theatres, the American Arts Alliance, the Washington State Arts Alliance, and is a constituent of the Theatre Communications Group.

This theatre operates under an agreement between the League of Resident Theatres and Actors' Equity Association, the Union of Professional Actors and Stage Managers in the United States.

Directors and choreographers at ACT are members of the Society of Stage Directors and Choreographers, an independent national labor union.



Dusty Strings
Guitars, banjos,
mandolins, harps,
dulcimers, books,
recordings and
more...
DUSTY STRINGS
3406 Fremont Ave. N.
Seattle, WA 98103
(206) 634-1656

New Connections

RELATIONSHIPS

...with a future

Built on Commonalities

- Lifestyles
- Attitudes
- Values

Let us begin that building process for you. With over 20 years of experience, we know how.



Eric Meltzer



Gayle Zawaideh

Very **Personal** & Strictly **Confidential**

726 • 2660

New Connections



*Creative
Contemporary
Cuisine*

2701 Cedar (at First)
441-4805

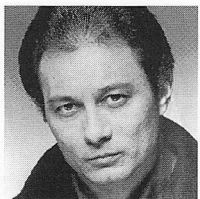
The Actors



Susan Barnes
Agnes Smedley

began as a dancer, then earned an MFA in directing before starting her acting career. Her extensive theatre credits

include: *La Bete*, *The Ice Fishing Play* and *Stanton's Garage* with Actors Theatre of Louisville; *Remembrance* with the Old Globe in San Diego; *Alfred Steiglitz Loves O'Keefe* with the New Mexico Repertory; *Stepping Out* with the Pasadena Playhouse; *The Five of Us* and *On The Verge* with the Mark Taper Forum; *Women Behind Bars* with the Roxy Theatre in Los Angeles and Alcazar Theatre in San Francisco, where she earned the Drama Critics Circle Award for Best Supporting Actress; *Goodbye Freddie* with the South Coast Repertory; and *Kilo* with the Ensemble Studio Theatre in New York. Across the Atlantic, she appeared in *Still Life* in Edinburgh as well as in London's West End at the Royal Court and at the Riverside Studios. From 1984 to 1991 she was an acting member of Robert Redford's Sundance Institute, developing such plays as *The Kentucky Cycle* and *Angels in America*. She was also one of four actors chosen to represent the U.S.A. in Reykjavik, Iceland, for a theatrical event involving all the Scandinavian countries. Made-for-TV movies include *In the Best Interest of the Children*, *Don't Touch My Child*, *Mischief*, *A Deadly Silence*, *She's in the Army Now* and *Angel on My Shoulder*. TV series include *L.A. Law*, *Growing Pains*, *A Year in the Life*, *Hooperman*, *Cagney & Lacey* and *The Young and the Restless*. Films include *Two Moon Junction*, *The Vanishing*, *Meet the Applegates*, *Frances*, *Extremities*, *They Live* (directed by John Carpenter), *PeeWee's Big Adventure* (directed by Tim Burton), *Repo Man* (directed by Alex Cox), *Swingshift* (directed by Jonathan Demme) and *The Enforcer* (directed by Clint Eastwood).



Ernest Abuba
Chu Teh

Ernest has performed on Broadway in *Shimada*, *Zoya's Apartment*, *Loose Ends* and *Pacific Overtures*. Off-

Broadway, his credits include the lead in *Shogun Macbeth*, *The Reciter* in the revival of *Pacific Overtures*, *Chebutykin* in *Three Sisters*, *Singer* in *Caucasian Chalk Circle* at La Mama Annex as well as *Yellow Fever* at Pan Asian Repertory and workshops at Actors Studio. Around the country, Ernest has played Oberon in *A Midsummer Night's Dream* at New Stage in Mississippi, *Autolycus* in *A Winter's Tale* at the Huntington Theatre in Massachusetts, *King Arthur* in *Pendragon* at George St. Playhouse in New Jersey and *Steve* in *F.O.B.* at the Eugene O'Neill Playwrights Conference. He has also worked at Missouri Repertory, Indiana Reper-

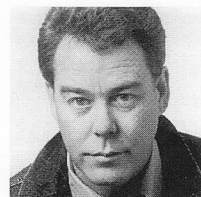
tory, Arena Stage, Buffalo Studio Arena, Dallas Shakespeare Festival, Merrimack Repertory and the Old Globe. In addition to appearing in a number of films, such as *Article 99*, *King of New York*, *Call Me*, *Intimate Strangers*, *Vestige of Honor* and *Forever Lulu*, Ernest has appeared on *The Bill Cosby Show*, *Kung Fu: The Legend Continues*, *Counterstrike* and *Adderly*. The recipient of an Obie Best Actor Award and a Rockefeller Fellowship, he earned a Best Actor award from the Focus Press for his work at Buffalo Studio Arena and a nomination for Best Supporting Actor for his work at the Old Globe in California.



Jeanne Sakata
Lily Wu

Jeanne just finished performing the roles of Suzuki and Comrade Chin in the Arizona Theatre Company's

production of David Henry Hwang's *M. Butterfly*. She has performed at the Mark Taper Forum as *The Gardener* in *Richard II*, as Dr. Libushe Lorencova in Vaclav Havel's *Temptation*, and in the Taper Forum workshop production of *Orestes*. She was also featured in the Oregon Shakespeare Festival's production of *M. Butterfly*, at the New York Shakespeare Festival as a witch opposite Raul Julia in *Macbeth*, and at Syracuse Stage as Himiko Hamilton in *Tea*. A veteran of over two dozen L.A. plays at such theatres as Will Geer's Theatricalum Botanicum, the Odyssey Theatre, the Back Alley Theatre, and the East West Players, she especially cherished playing Ellida in Ibsen's *The Lady from the Sea* at the Fountain Theatre. Jeanne's TV credits include *L.A. Law*, *Knots Landing*, *The New Adam 12*, and the TV movies *Fine Things* and *Hiroshima: Out of the Ashes*. She recently co-starred in the feature film *Poison Ivy*. She thanks her husband Tim Patterson, Meg Kruszezwska and Lenore Zerman for their faith and support.



David Mong
The Guard

David was last seen at ACT in *Red Noses*. Before that he appeared here in a number of plays, including *The*

Downside, *Quartermaine's Terms*, *On the Razzle*, *End of the World* (with *Symposium to Follow*), *King Lear* and, of course, *A Christmas Carol*. He has appeared in theatres throughout the Northwest including the Seattle Repertory Theatre, Intiman Theatre, Empty Space, Seattle Group, Portland Repertory and Tacoma Actors Guild. Nationally, theatres include Virginia Stage Company, Westbeth Theatre in New York City, New Mexico Repertory in Santa Fe and Albuquerque, Salt Lake Acting Company and the Gathering at Bigfork, Montana.

Directors and Production Staff

Steven E. Alter Director

is in his fifth year as ACT's Artistic Associate/Literary Manager after coming to Seattle to work on the world premiere of Steven Dietz's *God's Country* in 1988. He has directed the Young ACT touring productions of *The Falcon* and *Face 2 Face*, and recently directed John Olive's *The Voice of the Prairie* for Tacoma Actors Guild. He originally directed a reading of *Agnes Smedley* at The Gathering at Bigfork, where he most recently directed a reading of a new play by Erik Brogger. Steven has served as Production Dramaturg on over twenty new plays, and is particularly proud of his ongoing relationships with playwrights Doris Baizley, Erik Brogger, Steven Dietz, Jon Klein and Kevin Kling. He was a Literary Intern at Actors Theatre of Louisville during the 1985/86 season, where he dramaturged plays in three festivals: *Shorts '85*, *Classics in Context* and the *Humana Festival of New American Plays*. In Minneapolis, he was Marketing Director at Illusion Theatre, and assistant to the Executive Director at the Playwrights' Center.

Jeanne Arnold Costume Designer

is pleased to return to ACT, where she last designed *The Revengers' Comedies*. Previously her work has been seen locally in *Rumors* at Tacoma Actors Guild, *Three Men on a Horse* at the Bathhouse, *Peter Pan* and *Into the Woods* at Civic Light Opera, *A Midsummer Night's Dream* at The Village Theatre, and *La Serva Padrona* for the Seattle Symphony Orchestra. Other work includes *The Homecoming* and *The Norman Conquests* for New Rose Theatre in Portland, *Just Between Ourselves* for Portland Repertory Theatre and *Cat on a Hot Tin Roof*, *Painting Churches* and *Driving Miss Daisy* at New Harmony Theatre in Indiana. Jeanne received her MFA from the University of Washington, has been an assistant designer for two seasons at the Oregon Shakespeare Festival in Ashland, and currently teaches costume design at the University of Puget Sound. She is also working on projects for *Hansel and Gretel* at Seattle Opera this fall.

Doris Baizley Playwright

lives in Los Angeles where she is a founding member of LA Theatreworks and leads their Writer's Dialogue workshop for women playwrights. For seven years she was resident playwright for the Mark Taper Forum's Improvisational Theatre Project. Her plays *Tears of Rage*, *Mrs. California*, *Catholic Girls*, *Daniel in Babylon* and *A Christmas Carol* have been performed at many regional theatres including ACT,

The
Collection
available
exclusively

ADRIENNE
VITTADINI
Y A R N S

at Tricoter • 3121 E. Madison Street • Seattle • 328-6505



Custom Sweaters for Men and Women available by Appointment

UNTIL YOU GET A PERSONAL VALET, GET A CALIFORNIA CLOSET.



In a California Closet,
every fine suit, every
power tie, every acces-
sory has a custom-designed place of its own. Where
it's well cared for. And
displayed so creative combinations are easy to see.

A California Closet protects your investment in
your wardrobe. And it'll never ask for the night off.

CALL FOR A FREE IN-HOME DESIGN SESSION

Seattle
(206) 762-1313

Lynnwood
(206) 776-6262

Tacoma
(206) 752-6606

Bellevue
(206) 644-1006



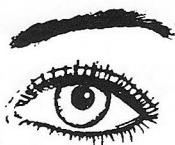
OVER ONE MILLION SATISFIED CUSTOMERS

"DO NOT CLIMB A TREE TO LOOK FOR FISH." -Ancient Chinese Proverb

WILD GINGER
ASIAN RESTAURANT & SATAY BAR

1400 WESTERN AVENUE ♦ 623.4450

Permanent Eyebrows, Eyeliner & Full Lip Color



A tattoo process, never smears. Enhance your lash line. Great for allergic eyes and contact wearers. Gives shape to sparse eyebrows. Covers scars.

822-3620

The Change Point



◆ Freshly Baked Pot Pies & Irish Soda Bread

◆ Slow-Roasted Prime Rib & Northwest Salmon

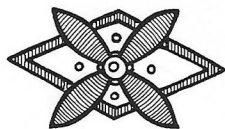
◆ Post-Theater Menu

◆ Live Irish Sing-a-Long Friday Evenings

◆ 20 Draught Beers Featuring Northwest Brews

21 Mercer Street
Across from Tower Books
282-1910
Reservations gladly

Yazdi



Unique and Unusual Clothing
at Affordable Prices

Wallingford Center Pike Place Market
Broadway Market

Directors and Production Staff (cont.)

Capital Rep, the Cleveland Playhouse, the Mark Taper Forum and the National Theatre of the Deaf. Her adaptation of *A Christmas Carol* is now being performed annually at the Semafor Theatre in Prague and *Daniel in Babylon* opened the new Icon Theatre at the National Theatre of Taiwan in April. With Victoria Ann Lewis, she is co-adaptor of *Ph*reaks*, writing from the Disability History Project, performed at the Taper's 1993 New Play Festival. Two of her screenplays have been presented on American Playhouse, *Until She Talks* (1984) and *Land of Little Rain* (1987). She began working with Steve Alter on *Agnes Smedley: Our American Friend*, her third production at ACT, at the 1992 Gathering at Bigfork.

Mary H. Corrales-Diaz Stage Manager was stage manager last winter for *A Christmas Carol*. For the past three years, she has stage managed the Young ACT touring shows throughout Washington State. Locally she has stage managed for Spectrum Dance Theatre. Mary has also worked for Intiman Theatre, Empty Space Theatre, Pioneer Square Theatre and the Village Theatre as well as Bumbershoot. Previously, she stage managed at the Colorado Shakespeare Festival, where some of her favorite shows were *Titus Andronicus*, *Taming of the Shrew* and *Henry IV, Part I*. Mary also was the stage manager and road manager for *Cinders*. A graduate of the U.W., she is certified as an actor/combatant by the Society of American Fight Directors.

Deborah Frockt Production Dramaturg is the researcher and dramaturg for *The Rememberer* and *Just So and Other Stories*, two new plays to premiere at the Seattle Children's Theatre in the 1993-94 season. She has worked at The Empty Space as dramaturg for *Mad Forest*. As the Associate Literary Manager at Actors Theatre of Louisville, Deborah was the dramaturg for numerous world premieres, including plays by David Hwang and John Conklin. She is also the author of four one-act plays that were produced at Actors Theatre of Louisville: *A One-Night Stand One Morning*, *Gynodynamics*, *No Proof* and *Hard-Boiled*.

Steven M. Klein Sound Designer designed *Life During Wartime* and three shows for ACT last season, *Shadowlands*, *The Revengers' Comedies* and *A Christmas Carol*. His previous ACT designs include *Tears of Rage*, *My Children! My Africa!*, *Halcyon Days*, *Four Our Fathers*, *A Normal Life*, *The Jail Diary of Albie Sachs*, *The Downside*, *Breaking the Silence* and *Mrs. California*. Other local credits include over 50 productions at the

Seattle Repertory Theatre as well as many productions at the Empty Space Theatre, Alice B. Theater, Seattle Children's Theatre and others in the Seattle area. Nationally, his work has been heard at The Kennedy Center, Arizona Theatre Company, Philadelphia Drama Guild, The Arena Stage, The Circle Repertory and the Utah Shakespearean Festival. Upcoming projects include *Harvey* for the Seattle Repertory, *Master Harold and the Boys* at Intiman, *Shadowlands* for Arizona Theatre Company and *La Bete* for the Group Theatre.

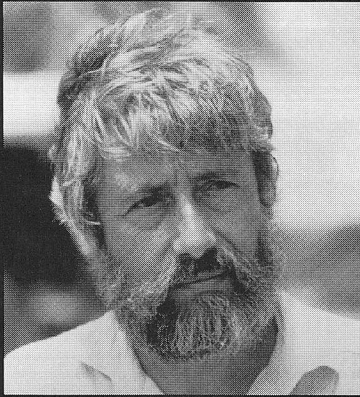
Shelley Henze Schermer Scene Designer has been associated with ACT for 20 years, designing properties, masks, costumes and scenery for ACT's Mainstage, Songworks and Young ACT Company. Shelley's Mainstage designs include *Lloyd's Prayer*, *God's Country*, *Custer*, *Amadeus*, *Fool for Love*, *On the Razzle*, *Little Shop of Horrors*, *My Children! My Africa!* and, most recently, *The Revengers' Comedies*. Her numerous set designs for The Bathhouse Theatre include *Wild Oats*, *Twelfth Night*, *Threepenny Opera*, all versions of *The Big Broadcast* including those seen in Vancouver, B.C., and Cincinnati, and *Black Stage Views*. Recently she designed *Dr. Doolittle* at Seattle Children's Theatre. Her work has also been seen at most of the other theatres in town, as well as at the Honolulu Theatre for Youth and the Seattle Children's Museum.

Mayme Paul-Thompson Choreographer has choreographed over 40 productions in the Seattle area. In the past year, her credits include *What to Say* at the Seattle Repertory, *Sweet Charity* and *Me and My Girl* at Civic Light Opera, *Grease* at Alice B. Theatre and four episodes of *Northern Exposure*. She has also staged Opening Day ceremonies and other special events for the Seattle Mariners for the past four years. As a performer, Mayme danced on Broadway in *The Tap Dance Kid*, *Little Johnny Jones*, *A Chorus Line* and at the 1984 Tony Awards. She has worked with such stars as Michael Jackson, Juliet Prowse, Tom Hulce, Gwen Verdon and Woody Allen. Mayme also acts and can be seen in local and national commercials, and will soon be playing Cassie in the Tacoma Actors Guild production of *A Chorus Line*.

Michael Wellborn Lighting Designer has designed lighting for many organizations in the Northwest, including the Seattle Repertory Theatre, Intiman, Tacoma Actors Guild, Empty Space, Seattle Children's Theatre, Spectrum Dance Theatre and the

(continued on page 14)

Cousteau



SLA presents

Science, Technology and Society Lectures

Ocean Explorer

Jean-Michel Cousteau,
September 27th, in a live
personal presentation with
dramatic new film footage.

Also:

MIT's Dr. Philip Morrison
(Oct. 25th) on the cosmic dark
matter issue "Radiance without
Shadows", Howard Rheingold
(Nov. 15th) on "Virtual Reality"
Harvard's Dr. Stephen Jay
Gould (Nov. 30th) "Rethinking
Evolution", Dr. Linda Schele
(Jan. 31st) on "Maya Cosmos:
3000 Years on Shaman's Path",
anthropologist Dr. Don
Johanson (Apr. 16th) author of
LUCY, "Searching for Our
Oldest Ancestors",
Dr. Frank Tipler (May 10th)
"Physics of Immortality:
Modern Cosmology and God".

All presentations are at
Seattle's Paramount Theatre.
Start at 7:30pm.

For Info/Tickets
Call Ticketmaster
628-0888

Produced by the Institute for
Science, Engineering and
Public Policy. Co-sponsored
by KCTS/9, Seattle University,
CH2M Hill, Waggener
Edstrom, KUOW, and
The Boeing Company.
Special thanks to the
Alexis Hotel.



Alaska Contemporary Dance Company.
Nationally he has completed four seasons at
the Colorado Shakespeare Festival and has
toured the U.S. and Southeast Asia with the
Ririe-Woodbury Dance Company. Michael
is also the Technical Director/Lighting
Designer for the University of Washington
Dance Program.

Acknowledgments

ACT gratefully acknowledges the
following for their assistance with this
production:

Liz Huddle
Intiman Theatre Company
Daniel Keane, Market Place Salon
Phyllis K. Look
Stella Norman,
Department of Asian Languages,
University of Washington
School of Drama,
University of Washington
Seattle Opera
Seattle Repertory Theatre

ACT also thanks the following for
their generous donations to the
Opening Night parties during 1993:

A La Francaise
Boyd Coffee Company
Kaspar's
Mama's Mexican Kitchen
Queen Anne Cafe
Queen Anne Thriftway
Spot Bagel Bakery
Triangle Tavern
Tup Tim Thai
Vince's Italian Restaurant & Pizzeria

A very special *thank you* to
R.O. Ruppin Florist.

Special thanks go to the **Arizona
State University** at Tempe for allowing
ACT to reproduce photos from its
Agnes Smedley Collection, in the
University Library's Department of
Archives and Manuscripts.

Grateful acknowledgement is made
to: **University of California Press** for
permission to use material from Agnes
Smedley: *The Life and Times of an
American Radical* by Janice MacKinnon,
Stephen MacKinnon. © 1987, The
Regents of the University of California;
and to **Random House, Inc.** for
permission to use material from *Battle
Hymn of China* by Agnes Smedley,
1943, 1970.

Next at ACT

An American Premiere ***Dreams From a Summer House***

A magical, musical comedy by
Alan Ayckbourn with
music by John Pattison

Previews October 16 – 20
Oct. 21 through Nov. 14

From the pen of England's greatest
comic playwright comes a magical,
musical confection that puts a fanciful
new spin on the age-old battle of the
sexes. Robert, a disenchanted artist, is
illustrating a new edition of "Beauty and
the Beast." To his surprise and delight,
the beauty he has been painting appears
in the flesh! Creator and creation find
themselves falling in love — until
Robert's ex-wife conjures up the Beast,
whose time is running out. Witty lyrics
and charming music combine in this
irresistible cliffhanger that raises
hilarious new questions about "happily
ever after."

"Enchanting, ingenious...
uproariously funny!"
—*Daily Telegraph*, London

Alan Ayckbourn, the popular and
prolific English playwright, is the
author of *The Revengers' Comedies*,
Woman in Mind, *How the Other Half
Loves*, *The Norman Conquest and Absurd
Person Singular*. This U.S. premiere of
his latest work will be directed by Jeff
Steitzer. Suzanne Bouchard and R.
Hamilton Wright, who last appeared at
ACT in *The Revengers' Comedies*, and Liz
McCarthy, who played Tood in *The
Cover of Life* this season, are among the
cast of *Dreams from a Summer House*.

Sign-Interpreted performance: Friday,
Nov. 5 at 8 pm — reserve in advance.

Audio-described performance: Sunday,
Nov. 7 at 7 pm — reserve in advance.

Major Contributors to ACT's 1992-1993 Annual Fund

A Contemporary Theatre is deeply grateful for the generous support of many individuals, corporations, foundations and government agencies. These contributors make excellent contemporary theatre possible, and we are proud to salute them. (Please note that the contributor listings reflect gifts received prior to Aug. 1, 1993.) A "+" denotes the gift was matched by a business or foundation.

ACT Benefactors (\$10,000+)

The Allen Charitable Foundation for the Arts
Buster & Nancy Alvord
Corporate Council for the Arts
Katharyn & Norman Gerlich
King County Arts Commission
National Endowment for the Arts
PONCHO (Patrons of Northwest Civic, Cultural & Charitable Organizations)
Seattle Arts Commission
The Shubert Foundation, Inc.
Washington State Arts Commission

Founders Circle (\$5,000+)

Chap & Eve Alvord
+Katherine & Douglass Raff
1 Anonymous Gift

Patrons Circle (\$2,500+)

Bruce & Marge Bradburn
+Gail & Steve Brilling
The Bullitt Foundation
Dr. & Mrs. Gregory A. Falls
Mr. & Mrs. Samuel N. Stroum

Playwrights Circle (\$1,000+)

Victoria & Kermit Anderson
+John & Deetsy Armstrong
Mr. & Mrs. Jack Benaroya
+Jerry & Sally Block
Mr. & Mrs. Louis Burzycki
+Philip & Janice Condit
Jane M. & David R. Davis
Aubrey & Henrietta Davis
Patrick J. Dineen
+Mr. & Mrs. Klaus Engel
Margo & Rodger Fagerholm
The Fales Foundation Trust
Mr. & Mrs. George P. Hutchinson
Keith & Joan Larson
George & Mary Bruce Lhamon
+Mr. & Mrs. James A. Lyons
Mr. & Mrs. Frank Meyer
+Gloria & David Moses

Eleanor & Charles Nolan
Doug & Nancy Norberg
Rep. & Mrs. George Marshall Paris
Mr. & Mrs. Frederick O. Paulsell
Mr. & Mrs. Ancil H. Payne
+Suzanne & Brooks Ragen
Mr. & Mrs. Thurston Roach
Jo Anne & Donald Rosen
Sam & Gladys Rubinstein
+Mr. & Mrs. Herman Sarkowsky
+George & Polly Schairer
Kayla Skinner
Nadine H. Troyer
Walter & Jean Walkinshaw
Roberta Weeks
Kenneth S. Weiner & Katherine Fletcher
George & Colleen Willoughby
Mrs. T. Evans Wyckoff
2 Anonymous Gifts

Directors Circle (\$500+)

The ACT Staff
+Mr. & Mrs. Gilbert W. Anderson
The Ash-Gudaitis Foundation
Mr. & Mrs. Stewart Ballinger
Bill Campbell
+Eric & Susan Campbell
+Jack Yager & Katherine Crandell
+Merlyn Flakus
Frank Fleetham & Regina LeFeve
Nina Hale/Davis Wright Tremaine
Mr. & Mrs. Fred Haslund
Sara Comings Hoppin
Mr. & Mrs. L.P. Hughes
+Owen King & Joan Thacker
David Landes
Mrs. Janice L. Levis
+Alice Mailloux
Charles & Aileen Mangham
Elizabeth A. Mayberry
Jane H. Milholland
John A. & Nadine M. Murray
Pamela & Gilbert Powers
Andrea & Alan Rabinowitz
Helen Rosen
Martha Scannell
Gilbert Scherer & Marilyn Friedlander

Davis Fox & Jil Spitzer-Fox
Margaret Stoner
David and Shirley Urdal
Robert & Marjory Willkens
Winslow & Catherine Wright
1 Anonymous Gift

Artists Circle (\$250+)

Mr. & Mrs. Edward W. Andrews Jr.
Bob & Rhoda Besecker
Brian Bogen
David & Sheryl Burgstahler
Mrs. Bud J. Burnett
+Arthur Caputo
+Peter & Diana Christofferson
+Ceil & Stephen Church
Hugh & Suzanne Clark
Wendy Cohen & John M. Chenault
Jim & Jan Coleman
Mr. & Mrs. Michael Corliss
Chris Curry
King & Lois Curtis
+Nancy Cushwa
John P. Dickover & Valerie LaBerge
Daniel Dierks
Daniel D. Ederer
Lisa Ely
Andrew Fallat
Bill & Karen Feldt
Honorable Betty B. & Robert Fletcher
Mr. & Mrs. Albert M. Franco
+Shirley & Bob Girard
+Mr. & Mrs. Boyd Givan
Martha Kongsgaard & Peter Goldman
Mr. & Mrs. Max Gurvich
Bill Hanlin
David Harrison
Mrs. George M. Hellyer
Charles M. Henderson
+Steve & Robin Henn
Howard & Judy Herrigel
John & Michelle Hersman
+William A. Horton
Mrs. Ruth Husfloen
Mr. & Mrs. Lewis H. Johnson
Roger & Jeanne Jones
Sara Kaplan

+K.G. Larson & W.L. Rankin
Douglas J. Lee
Mark Levine
Ken & Peggy Long
Mr. & Mrs. Everil E. Loyd Jr.
Wah & May Lui
+Susan Martin
Elaine McBee
Mr. & Mrs. Larry McKinney
Mrs. John & Gail Mensher
+Mr. & Mrs. John J. Messerly
Col. Norman D. Miller
+Mr. & Mrs. Thomas W. Miller
Mr. & Mrs. Stanley N. Minor
Mrs. Harold D. Mitchell
Mr & Mrs. Clyde Moore
Elizabeth Morrison
Judith O'Brien
+Daniel Osterman
Michael Otani/Air Commodities Inc.
Don & Bonnie Paterson
Mark & Barbara Phillips
Elizabeth & Harry Poll
John Polstra
Daniel & Barbara Radin
Dr. & Mrs. Glen Rice
Robert & Carol Riede
Mrs. Dwight E. Robinson
Mr. & Mrs. John C. Rudolf
+Myrna L. Schaevitz
Phil & Shelley Schermer
Sheila Scott
Cynthia Sears & Frank Buxton
Patricia A. Sias
Judy Soferman & Marc Rosenshein
Don Spickard
Mr. & Mrs. Jack Spitzer
RADM & Mrs. Emory Stanley Jr.
Dr. & Mrs. Walter C. Stolov
Gail & David Sunde
Geraldine Tyler
Janet L. Upjohn
Jeanne C. Wintz
Diana & Clint Worthington
Mr. & Mrs. Bagley Wright
Mrs. Ruth Yasgur
+Doug York
1 Anonymous Gift

The following companies have generously supported ACT through the Corporate Partnership Program:

Corporate Partners (\$20,000+)

The Boeing Company
Corporate Council for the Arts
SAFECO Corporation

Corporate Co-Sponsors (\$10,000+)

American Passage Media Corporation
Coopers & Lybrand

Corporate Underwriters (\$5,000+)

Seafirst Bank

Corporate Associates (\$2,500+)

Alaskan Copper & Brass Company
The Callison Partnership

Corporate Circle Members (\$1,000+)

Airborne Express
Ballard Computer
Davis Wright Tremaine
Foster, Pepper & Shefelman
Knoll Lumber & Hardware
Met Life Capital
Pacific First Bank
Preston, Thorgrimson, Shidler, Gates & Ellis
Ragen MacKenzie, Inc.

Riddell, Williams, Bullitt & Walkinshaw
Totem Ocean Trailer Express
U.S. Bank
Walker, Richer & Quinn
West One Bank
Wright Runstad & Company

Corporate Supporters (\$250+)

Aiken, St. Louis & Siljeg, P.S.
Continental Bakers
Gull Industries
Northwest Protective Services
Paul Thomas Winery
Redhook Ale Brewery, Inc.
Sullivan Golden Fulton