

ARTS NEWS

By Jane Lotter

Wonderful Ideas

Seattle actor Glenn Mazen
audiences here for his perform-
ances at the Empty Space

ARTS

L I N E

A CONTEMPORARY THEATRE
EDITION

Volume II, No. 3

July, 1984



and he tells a lot of wonderful stories. So
(continued on page 21)

new heating and ventilation

BUTLER
Fire and Yelder: 625-1234

A Contemporary Theatre

Gregory A. Falls
Producing Director

Phil Schermer
Producing Manager

Susan Trapnell Moritz
Administrative Manager

presents

Angels Fall

by Lanford Wilson

July 12 - August 4, 1984

Director	Fred Chappell
Scenic Designer	Karen Gjelsteen
Costume Designer	Josie Gardner
Lighting Designer	Rick Kennedy-Paulsen
Sound Designer	Robert Bulkley
Stage Manager	Bonita M. Ernst

THE CAST

Niles Harris	Clayton Corzatte
Vita Harris	Katherine Ferrand
Salvatore (Zappy) Zappala	Rudy Goldschmidt
Marion Clay	Jeanne Paulsen
Don Tabaha	René Moreno
Father William Doherty	Ben Tone

Understudies: William Bishop, *Don/Zappy*; Elizabeth Douglas, *Vita/Marion*; Charles Noland, *Niles/Fr. Doherty*.

THE PLACE: a mission in northwest New Mexico

THE TIME: 5 p.m., Saturday, early June

There will be one 15-minute intermission.

This production is made possible, in part, by The Seattle Arts Commission, City of Seattle, and by the Washington State and King County Arts Commissions. ACT gratefully acknowledges support from the National Endowment for the Arts in Washington, D.C., a Federal agency, and from the Corporate Council for the Arts (CCA).

About the Play

*The shepherd's brow, fronting forked lightning, owns
The horror and the havoc and the glory
Of it. Angels fall, they are towers, from heaven—a story
Of just, majestic, and giant groans.
But man—we, scaffold of score brittle bones;
Who breathe, from groundlong babyhood to hoary
Age gasp; whose breath is our memento mori—
What bass is our viol for tragic tones?*

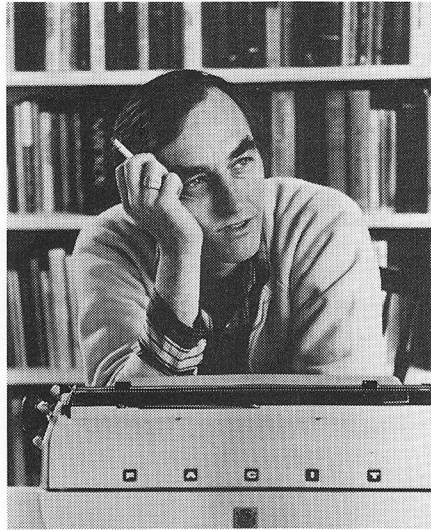
—Gerard Manley Hopkins

Lanford Wilson is the author of over 40 plays, including *Hot I Baltimore*, which ACT presented in its 1974 mainstage season, and the 1980 Pulitzer Prize-winning *Talley's Folly*. He is playwright-in-residence and co-founder of the Circle Repertory Company in New York, and he has said he writes his plays with specific company members in mind (as did Molière, Shakespeare, Odets, and others with their own companies).

In May, 1983, Wilson shared with the Circle Rep and its artistic director, Marshall Mason, an Obie Award "for sustained achievement" in the theatre. It was Wilson's third Obie among the numerous honors he has received.

Angels Fall was commissioned by the New World Festival of the Performing Arts in Miami, where it was first presented on June 19, 1982. It has been reported that Wilson was asked to write the play, replacing Arthur Miller, who at the time could not accept the commission. *The Financial Times* added that Wilson was inspired to write *Angels Fall* by a postcard of the Arizona desert displayed on the wall of a New York bar.

Angels Fall opened at the Circle Rep on October 16, 1982. It was transferred to



**"I'm trying to record my
contemporary history—
where we are and what
I see around me today."**

—Lanford Wilson

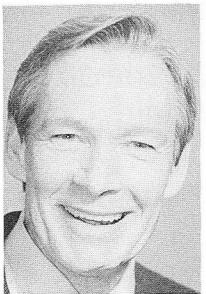
Broadway's Longacre Theatre, where it opened on January 18th, last year, and where it received a Tony Award nomination for Best Play of 1983.

Frank Rich of *The New York Times* wrote: "Mr. Wilson, one of the most gifted American playwrights of our era, fills the stage with six fully observed people and draws us totally into their struggles to find meaning and peace in their lives. Their talk is by turns lively and touching, and by evening's end, all six characters have become old and valued friends. *Angels Fall* is to be savored... for the intelligence and clear-eyed compassion that can be found in every line Mr. Wilson writes. [He] is one of the few artists in our theater who can truly make America sing."

Lanford Wilson's other plays include *5th of July*, *A Tale Told*, *The Family Continues*, *Serenading Louie*, and *Thymus Vulgaris*. He also wrote the libretto for Lee Hoiby's opera of Tennessee Williams' *Summer And Smoke*, as well as two television plays, *Taxi!* and *The Migrants*. Earlier this year he completed an entirely new translation of Chekhov's *The Three Sisters*. Mr. Wilson makes his home in Sag Harbor, New York.

WHO'S WHO

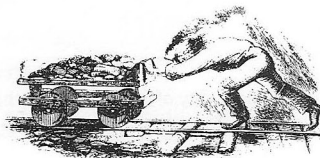
CLAYTON CORZATTE (*Niles Harris*) has played leading roles with many of the nation's best known theatre companies, including The Guthrie in Minneapolis, Arena Stage in Washington, D.C., and the Actors Theatre of Louisville. During eight years with the APA-Phoenix in New York, he received an Obie Award for his performances as Constan-



tine Treplex in *The Sea Gull* and was nominated for a Tony Award for Charles Surface in *The School for Scandal*. Since moving to Seattle, Clayton has worked as actor and director with all our area's professional

theatres. ACT audiences saw his productions of *Fanshen*, *Whose Life Is It Anyway?*, and *Holy Ghosts* and his performances in *Artichoke*, *Travesties*, and *A Day in the Death of Joe Egg*. This past year he was seen as Billy Bishop at TAG and as Friar Lawrence and Tom Alley in *Make and Break* at The Seattle Rep. He and his wife, Susan Ludlow, are creators of *Antic Diversions* and share a position on the faculty of Cornish Institute.

KATHERINE FERRAND (*Vita Harris*) was last seen at ACT as Helen of Troy and

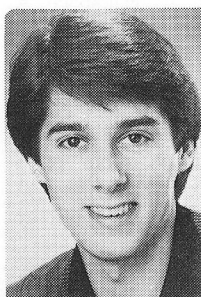


Amy in *Wings*, Violet in *Man and Superman*, Ginny in *Relatively Speaking*, and Ruth in *Night and Day*. In 1982 Katherine went to Australia as the second part of an exchange between ACT and the Playbox Theatre in Melbourne, where she played Sally in *Talley's Folly*. (Australian actor Neil Fitzpatrick ap-

Artemis in *The Greeks*. Since then she has appeared in *Uncle Vanya* at the Arizona Theatre Company, *Design for Living* at Boston's Huntington Theatre Company, and in the Empty Space's *Vampires*. Katherine's many performances here at ACT include

peared in our production of *Night and Day*.) Katherine was a leading member of The Guthrie Theater Company for six years and has appeared on Broadway. Locally she was a founding member of the Floating Theatre Company and has worked with Intiman, Bathhouse Theatre, and The Seattle Rep, where her credits include *Strider*, *The Front Page*, *Maggie in Cat on a Hot Tin Roof*, and *Kate in The Taming of the Shrew*.

RUDY GOLDSCHMIDT (*Zappy*) makes his Northwest debut in this production. He has



worked extensively with the Alliance Theatre in Atlanta, performing such roles as Buddy Layman in *The Diviners* (directed by Fred Chappell) and Huckleberry Finn in *The Adventures of Tom Sawyer*. His many other credits there include *A Streetcar Named Desire*, *A Midsummer Night's Dream*, *The Taming of the Shrew*, and *A Stag at Eve*. His substantial on-camera work includes Pia Zadora's new thriller, *Voyage of the Rock Aliens*, several PBS appearances, and "The Catlins" on WTBS-TV. Rudy holds a B.F.A. in dramatic arts from Auburn University.

RENÉ MORENO (*Don Tabaha*) is making his first appearance at ACT. He holds a B.F.A.



from the Professional Actors Training Program at Southern Methodist University, where his many credits include the roles of Jacques Roux in *Marat/Sade*, Sebastian in *Twelfth Night*, Melchior in *Spring's Awakening*, and Filch in *Three Penny Opera*,

among others. René understudied the role of Mozart in both the Broadway production and the national touring company of *Amadeus*. Among his other credits are *A Midsummer Night's Dream* with the Dallas Theatre Center, *Merchant of Venice* and *The Taming of the Shrew* with the Dallas Shakespeare Festival, *A Christmas in Old Vic* at the New Arts Theatre of Dallas, and the off-off-Broadway productions of *And That's The Way It Is* at the Writer's Theatre and *The Man of Destiny* and *Bits and Pieces* at the Lakota Theatre Company. René now lives in New York City.

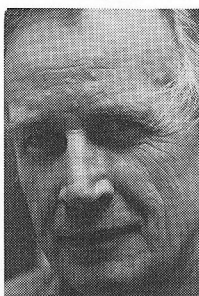
JEANNE PAULSEN (*Marion Clay*) was seen by ACT audiences as Teresa Salieri in



this season's opener, *Amadeus*, and then as Pope Joan and Louise in *Top Girls*. Last year she played several roles in *Cloud 9* here, after which she performed with the San Jose Repertory Theatre and played Mrs. Cratchit in The Milwaukee Rep's production of *A Christ-*

mas Carol. Jeanne was a member of The Oregon Shakespearean Festival company for three years, playing Irene Molloy in *The Matchmaker*, Kitty Carberry in *Spokesong*, Amy in *Wings*, Margaret in *Artichoke*, Julie in *Two Gentlemen of Verona*, Maria in *Twelfth Night*, and Lady Percy in *Henry IV, Part 1*. She also appeared in *Wild Oats*, *Richard II*, *Juno and the Paycock*, *Coriolanus*, and *Inherit the Wind*. At the Denver Center Theatre Company, Jeanne performed in *Waiting for Lefty*, and she has worked with the Pacific Conservatory of the Performing Arts in California.

BEN TONE (*Fr. William Doherty*) last year retired from his teaching position at Montana



State University to devote full time to acting. He was seen here most recently as Ebenezer Scrooge in our 1983 production of *A Christmas Carol*. He adapted and directed his own version of that holiday classic in Montana. His prior appearances on our mainstage include the roles of Weller in *The Gin Game*, Dodge in *Buried Child*, and Gramps in *Artichoke*. He also has extensive Off-Broadway credits and was seen in The Seattle Rep's presentation of *The National Health*. Ben appeared in four Hallmark Hall of Fame productions and played the Colonel in the movie *Bombs Away*, made here in Seattle.

FRED CHAPPELL (*Director*) was appointed Artistic Director of the Alliance



Theatre in Atlanta seven years ago. Prior to then he worked as a performer, while also serving as Resident Director. In the decade he has been directing, Mr. Chappell has staged over 60 productions, ranging from Shakespeare to musical comedy. Among his direct-

ing credits are *A Midsummer Night's Dream*, *Whose Life Is It Anyway?*, *The Robber Bridegroom*, *The Crucible*, *The Shadow Box*, *Educating Rita*, *A Streetcar Named Desire*, and most recently *Crimes of the Heart*. He also directed a production of *Vanities* which ran for six months at The Studio Theatre. Mr. Chappell has worked as an actor and director throughout the country, and he was honored with a Governor's Award in his native Georgia "for outstanding contributions to the arts."

KAREN GJELSTEEN (*Scenic Designer*) returns to ACT for the first time since designing our 1982 season opener, *Da*. Prior to that her work here was seen in *Makassar Reef*, *The Shadow Box*, *For Colored Girls...*, *The Club*, and *As You Like It*, among others. In the Seattle area, she has designed for The Empty Space, Intiman, Tacoma Actors Guild,



Bathhouse Theatre, and the Pioneer Square Theater. Her work also includes designs for the Alaska Rep, The Oregon Shakespearean Festival, Oregon Contemporary Theatre, and the Berkeley Rep, where her recent design for Alan Ayckbourn's *Season's Greetings* won a Bay Area Theatre Critics' Circle Award. Ms. Gjelsteen has been a member of the faculty at Cornish Institute since 1980, when she was awarded an N.E.A. guest artist fellowship to teach scenic design.

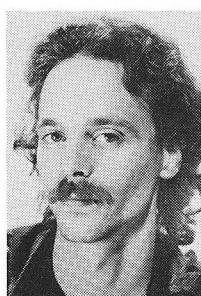
JOSIE GARDNER (*Costume Designer*) designed *Not Just Kidstuff* for the 1984 Young



ACT Company. She was supervisor of ACT's costume shop before that for the YAC's touring production, *The Persian Princess*, and for our 1983 production of *A Christmas Carol*. Josie is the resident costumer for the Village Theatre in Issaquah,

where her work has been seen in such productions as *Annie* and *Threads*. She holds an M.F.A. from the University of California at Los Angeles and has worked with Theatre 40 in Hollywood, the Palo Alto Players, the Children's Theatre of New Britain (Conn.), and The Seattle Rep. She also served on the faculty of the University of Washington School of Drama, where her design credits include the opera *Elixir of Love*.

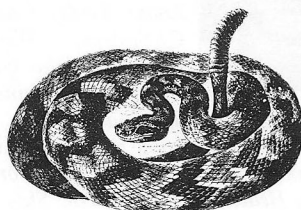
RICK KENNEDY-PAULSEN (*Lighting Designer*) has designed lighting for several



theatres in this area, although this is his first production with ACT. At Seattle's Children's Theatre, he lit productions of *Newcomers* and *Mother Hicks*. For The Seattle Rep, he designed *Between East and West*, and assisted The Rep's guest designers. At the Oregon

Contemporary Theatre, his designs include *Hello and Goodby*, *A Doll's House*, *Side by Side by Sondheim*, *Don Juan Comes Back From The War*, and *Old Times*. He was also OCT's technical director for three seasons. His designs for The Empty Space include the recent *Kitchen Church & Kids*, plus *Through*

(continued on page 16)



Art in the Lobby



Pagination, by Pat Kelly

In 1984 ACT once again is providing space in its upper lobby to individual Northwest artists. ACT feels this gives our audience a chance to view new works, enhances their theatre experience, and affords ACT the opportunity to be of service to the greater arts community. Sales of Art in the Lobby also can benefit the theatre.

During the run of *Angels Fall*, our Art in the Lobby curator, **Pamela Powers**, presents the works of Seattle artist **Pat Kelly**.

Ms. Kelly's works have been shown widely in Seattle galleries and some are included in the Seattle City Light and Harborview Medical Center collections, as well as in numerous private collections.

"I have been working with Prismacolor pencil and paint on black and gray papers for three years," she said. "These colored

grounds are beautiful in themselves, suggesting the infinite space of night and twilight skies; color seems to emerge from within them."

In her work on display here, she said she has been concerned "with two kind of energy. The pencil lines are very controlled and generally coalesce into geometrical relationships, often suggesting three-dimensional space. A looser, more fluid, yet directed, energy is revealed in the painted lines. Both kinds of energy exist in fields which interpenetrate: they dance together. And so, I think of these pieces as tunes to dance to!"

If you have any questions about our Art in the Lobby or wish to purchase art work on display, contact the House Manager or call the ACT office at 285-3220.

(continued from page 15)

the *Leaves* and *Oktoberfest*. Rick received his M.F.A. in lighting design from the University of Washington.

ROBERT BULKLEY (*Sound Designer*) also is marking his ACT debut with this production. He has lived in Seattle since 1979 and has directed plays, produced juggling and comedy performances, worked as a children's magician, and performed music as well. For two years he was production stage manager for Seattle Children's Theatre. He designed sound there for the last three productions, including *Tall Tales From Mark Twain*, directed by ACT's Anne-Denise Ford.

BONITA M. ERNST (*Stage Manager*) began her third season here at ACT with *Amadeus*.

Last year she stage managed *The Dresser*, *Crimes of the Heart* and *Cloud 9*, and the year before, *Waiting for the Parade*, *Da* and *The Greeks*, as well as the last two productions of *A Christmas Carol*. She is an M.F.A. graduate of California Institute of the Arts and has stage managed in theatres up and down the West Coast. Among the theatres she has worked with are The Seattle Rep, The Empty Space, the Mark Taper Forum and Westwood Playhouse in Los Angeles, the Globe Theatre in Hollywood, and the Old Creamery Theatre in Iowa.

SUSAN TRAPNELL MORITZ (*Administrative Manager*) came to ACT from Dance



Theatre Seattle, where she was general manager for two years and prior to that educational director. Her work experience ranges from a stint in Paris as UNESCO bilingual aide to writing and editing positions in the Washington, D.C., area. She worked with the National Urban League and also taught English to youngsters in Algeria. Ms. Moritz holds a B.A. in French from the University of North Carolina and has completed her M.A. coursework in dance education at George Washington University. She also attended the University of Lyons in France.

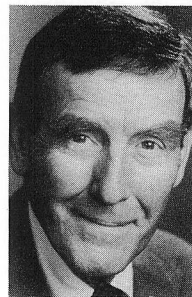
PHIL SCHERMER (*Producing Manager*)

has been with ACT for about 18 years, during which he designed lighting for a great many productions, including *Amadeus* this season and *Cloud 9* last season. Among his other lighting credits here are *The Greeks*, *Loose Ends*, *Custer*, *Catholics*, *Wings*, *Fanshen*, *The Club*, *The Water Engine*, *A Christmas Carol*, *The Shadow Box*, and more. At The Empty Space he designed lighting for *American Buffalo*, *A Prayer For My Daughter*, *Heat*, and *Dusa*, *Fish*, *Stas* and *Vi*. He also has designed lighting for The

Seattle Rep and its 2nd Stage and sets for ACT, the 2nd Stage, and The Empty Space.

GREGORY A. FALLS (*Producing Director*)

is the founder of A Contemporary Theatre and The Young ACT Company. He has directed more than 50 productions here, including *The Greeks*, *Catholics*, *Getting Out*, *Fanshen*, *Henry IV Part 1*, and *Ballymurphy*. He also created five original children's theater revues and three Christmas



shows, plus a scripted version of *The Odyssey* with playwright Kurt Beattie and original scripts of *Aladdin* and *The Magic Lamp*, *The Forgotten Door*, *A Wrinkle In Time*, *The Pushcart War*, *Ali Baba and the Forty Thieves*, and *The Persian Princess*. For ten years Mr. Falls was Executive Director of the U.W. School of Drama. He is past president of the National Theatre Conference and the Washington Association of Theatre Artists, a founding board member of the United Arts Council of Puget Sound, and founder of the Champlain Shakespeare Festival.

POST-PLAY DISCUSSION

A free, informal discussion of *Angels Fall* will take place in the theatre on Sunday, July 22nd, following the 2:30 matinee, at approximately 4:45 p.m. You and your guests are invited to attend and participate, along with members of the company.

Next at ACT

A World Premiere!

Thirteen
by Lynda Myles
August 16 - September 8



Playwright Lynda Myles

It was a much different world for a family in Queens, New York, in the 1950s. A testy grandfather and his two daughters, one of whom has a 13-year-old girl, bring to life a touching, often funny look at growing up in that time not long ago.

ACT's World Premiere presentation of *Thirteen* will be directed by Producing Director Gregory A. Falls. The design team includes Bill Forrester (*set*), Sally Richardson (*costumes*) and Al Nelson (*lighting*). Joan Kennedy is stage manager.

The cast includes Anne O'Sullivan, Stefan Schnabel, Joan Shangold, Barbara Sohmers, and Catherine Wolf, with one more person not yet cast.

Tickets for *Thirteen* are on sale now at the ACT Box Office. Call 285-5110.

NOW AT ACT!

A SERIES OF SPECIAL MONDAY NIGHT "SONGWORKS" PROJECTS

THE EXCITING NEW
MUSIC OF
UNCLE BONSAI



Limited Engagement
All Seats Reserved
Tickets \$7
ACT Box Office
285-5110

TOGETHER WITH

SEX
July 9 & 16
8 p.m.
voted by *People* magazine
as number one hobby of men,
women and others

TRAVEL
August 20 & 27
8 p.m.
"You can't get there from here."

THE ZANY, UNPREDICTABLE
IMPROVISATION OF
NONE OF THE ABOVE



YOUR TICKET TO TRAVEL AND LEISURE AWAITS YOU

ACT's Annual Benefit Drawing is in full swing, with the winning tickets to be drawn in the theatre on October 19th. (You need not be present to win.)

Tickets are available at performances of *Angels Fall*, *Thirteen*, and *Fool For Love*, as well as at the theatre's administrative office.

All prizes have been contributed for the fundraiser; your donation goes directly to ACT's Sustaining Fund in support of our 20th anniversary season.

So, enter today (see our representative in the lobby) and as often as you wish, for a chance to win any of the following fabulous prizes:

- Round trip for two to New York City, via *Western Airlines*
- Accommodations for two at Victoria's *Harbor Towers Hotel*, plus round-trip transportation via *San Juan Airlines*
- A night's lodging at *The Alexis Hotel & Restaurant*
- Gourmet picnic basket from *Chateau Ste. Michelle*
- Weekend for two at the *Four Seasons Hotel*, Vancouver, B.C.
- Dinner for two at *Le Tastevin Restaurant*
- Weekend for two at Seattle's *Madison Hotel*
- Dinner for two at the *1904 Restaurant*
- A night's accommodation for two at *Sally's Bed & Breakfast Manor* in Langley
- A bicycle from *Schuck's Auto Supply*
- A night's accommodation for two at the *Seattle Sheraton Hotel*
- An evening's transportation via *Star Limousine Service*
- A Melitta 10-cup automatic coffeemaker from *Starbucks Coffee & Tea*
- An 8 x 10 color portrait photo by *Yuen Lui Studio*
- A Wenatchee River trip from *Zig Zag River Runners* and more...

Your donation to ACT could be your ticket to **TRAVEL AND LEISURE!**

A Contemporary Theatre

P.O. Box 19400, Seattle, WA 98109

Located at 1st Ave. W. & W. Roy St.

Box Office: (206) 285-5110

Administrative Offices: (206) 285-3220

Gregory A. Falls, Producing Director

ADMINISTRATIVE STAFF

Susan Trappnell Moritz,

Administrative Manager

Administrative Interns **Leontine Gilyard**,

Garth Stein

Administrative Secretary **Robert Haynes**

Audience Services Manager **Janet Upjohn**

Bookkeeper **Bertha Sumner**

Development Director **Ann-Marie Spata**

Development Assistant **Janice Dilworth**

Mail Room Supervisor **Robert Rose**

Marketing Director **Julie Anderson**

Photographer **Chris Bennion**

Public Relations Director . **Michael Eagan, Jr.**

Public Relations Interns **Kelli Curtis**,

Kim Jorgensen

Receptionist **Jennie Sande**

Box Office Manager **Chris Coy**

Box Office Staff **Rose Cano**, **Cameron**

Dokey, **Jeannie Falls**, **Robert I. Lee**,

Cameron Mason, **Sue Schindele**,

Kathy Vitz

House Manager **Nancy Tennenhouse**

Assistant House

Managers **Jensen Brons**,

Kasey Meier

House Assistant **Stuart Ostfeld**

Custodian **Irene Blackford**

Concessions Managers **Brady Smith**,

Eden Stewart, **Jason Stewart**

Concessions Staff **Jeannie Falls**,
Janice Dilworth, **Patrick Turner**

ARTISTIC/PRODUCTION STAFF

Phil Schermer,

Producing Manager

Assistant Artistic Director/

Company Manager **Anne-Denise Ford**

Assistant Technical Director **Jody Briggs**

Music Coordinator **David Hunter Koch**

New Plays Manager **Barry Pritchard**

Stage Managers **Bonita M. Ernst**,

Joan Kennedy

Production Carpenter (IATSE #15)

Howard Neslen

Carpenter (IATSE #15) **Al Nelson**

Scenic Painter **Mary Alyce White**

Shop Assistant **Renee D. Reilly**

Costume Shop Manager **Carolyn Keim**

Cutter **Constance Rinchiuso**

Wigs **Joyce Degenfelder**

Production Assistants **Norbert Herriges**,

Sarah S. Mixson, **Jim Patten**

Production Intern **Kate Dyer**

Assistant Scenic Designer

Maria Bruzas-Zinkevicius

Properties **Kay Ray**

ACT Theatre gratefully acknowledges these businesses who have made opening night parties festive occasions for the 1984 season:

The Washington Post

A La Francaise

Wines selected by Pike & Western

Wine Merchants

BOARD OF DIRECTORS

President

Aubrey Davis

Vice President

Richard C. Clotfelter

Vice President

Pamela Powers

Vice President

Marilyn Batt Dunn

Secretary

Walter Walkinshaw

Treasurer

Donald B. Paterson

Immediate Past President

Harry M. Strong

Sustaining Fund Chairman

David A. McLeod

Ellsworth C. Alvord, Jr., M.D.

John C. Ashton

Jane M. Baxter

Richard C. Clotfelter

Aubrey Davis

Marilyn Batt Dunn

Andrew Fallat

Gregory A. Falls

Carolyn H. Grinstein

David M. Hewitt

Sara Comings Hoppin

Anne J. Kenefick

Barbara Kirk

Mary Lou LaPierre

James B. C. Lockwood

Paul Maffeo

David A. McLeod

Cynthia Stroum Meagher

Jane H. Milholland

Dr. Charles Nolan

Douglas E. Norberg

Donald B. Paterson

Karen Portzer*

Pamela Powers

Katherine L. Raff

Charlotte H. Reed

Judith M. Runstad

Theiline Scheumann

Carrie Soderstrom

Harry M. Strong

William H. Taylor

Walter Walkinshaw

Kenneth Weiner

ADVISORY COUNCIL

Rosemary (Wade) Ballinger

P. Cameron DeVore

Jacquetta Blanchett Freeman

C. David Hughbanks

George Lhamon

Ray Moore

Nadine H. Murray

Brooks G. Ragen

Sam Rubinstein

George S. Schairer

Mrs. Walter E. Schoenfeld

Marvel Stewart

Samuel N. Stroum

Dr. Robert Willkens

David E. Wyman, Jr.

**ex officio*



CORPORATE COUNCIL

FOR THE ARTS

Membership as of
June 8, 1984

The CCA is an association of local businesses which pool annual contributions in support of our local cultural industry. Over \$8.5 million has been provided since this effort began in 1969. ACT Theater has received over \$500,000 in total grants which have been used to offset general operating costs.

ACT salutes these companies which make this important support possible:

CCA MEMBERS \$200,000+

The Boeing Company

CCA MEMBERS \$50,000+

William Randolph Hearst Foundation
Pacific Northwest Bell
Rainier Bancorporation Foundation†
SAFECO Corporation
Seafirst Foundation
Weyerhaeuser Company Foundation†

CCA MEMBERS \$25,000+

Burlington Northern Foundation†
PACCAR Foundation

CCA MEMBERS \$15,000+

Merrill Lynch Pierce Fenner
& Smith
The Seattle Times
Simpson Timber Company Fund
Skinner Foundation
-N C Machinery Company
-Pepsi Cola/Seven Up Bottling Co.
-Skinner Corporation

CCA MEMBERS \$10,000+

Chevron U.S.A., Inc.
Crown Zellerbach Foundation
First Interstate Foundation
Nordstrom, Inc.
People's National Bank
Puget Sound Power & Light Company
Union Pacific Foundation
Univar Corporation
Westin Hotels

CCA MEMBERS \$5,000+

Airborne Freight Corporation
Alaska Airlines
Associated Grocers, Inc.
The Bon
Fisher Broadcasting Company
(KOMO Radio & TV)
John Fluke Manufacturing Company
Frederick & Nelson
KIRO, Inc.
Northern Life Insurance Company
Pay 'N Save Corporation
*Puget Sound National Bank
Seattle Savings League
Telzon Inc.
Unigard Insurance Group
Washington Natural Gas Company
Wright Schuchart, Inc.
-Howard S. Wright Construction
Company
-Wright Schuchart Harbor Company
-General Construction Company

CCA MEMBERS \$1,000+

Alaskan Copper Companies, Inc.
Albertsons, Inc.
Arthur Andersen & Company
Atlantic Richfield Foundation
AT&T
Bank of California
Robert A. Barnes, Inc.
Battelle Human Affairs Research
Center
Eddie Bauer, Inc.
Jack A. Benaroya Company
Bogle & Gates
*Brown & Haley
Cable Howse & Ragan
CH2M Hill

*Chalker Engineers, Inc.
*Concrete Technology Corporation
Continental Can Company, U.S.A.
Continental, Inc.
*Cornerstone Development Corporation
Criton Technologies
Deloitte Haskins & Sells
Eldec Corporation
Ernst & Whinney (Seattle)
Exxon Nuclear Company, Inc.
Farmers New World Life
Insurance Company
Fisher Mills, Inc.
Foster & Marshall/American Express
Foster Pepper & Riviera
General Telephone Company of
the Northwest
Gibson Co.
Gull Industries, Inc.
Hatch & Kirk, Inc.
*The Hillhaven Corporation
Honeywell, Inc.
IBM Corporation
*Jet Equipment & Tools, Inc.
Johnson & Higgins of Washington, Inc.
Howard Johnson & Company
Kerry Investment Company
KING Broadcasting Company
Leckenby Company Foundation
Mayne Nickless Incorporated
*Merrill Lynch Pierce Fenner
& Smith (Tacoma)
Monsanto Fund
*Nalley's Fine Foods
Norcliffe Company/Seaboard Lumber
Company

Northwest Building Corporation
Old National Bank of Washington
*Pacific First Federal Savings Bank
Pacific Gamble Robinson Company
Parker Smith & Feek, Inc.
Peat Marwick Mitchell & Company
J. C. Penney Company
Perkins Coie Stone Olsen & Williams
Physio Control Corporation
Price Waterhouse & Company
Prudential-Bache Securities
*Puget Corporation of Washington
The Rabel Foundation
Rainier Brewing Company
Riddell Williams Bullitt & Walkinshaw
The Robbins Company
Safeway Stores, Inc.
*Schoenfeld/Gardner Foundation
Sears Roebuck & Company
Sheraton Tacoma Hotel
Shidler McBroom & Gates
*South Tacoma Motor Company
Sterling Recreation Organization
Sundstrand Data Control, Inc.
*Tacoma Tent & Awning Co., Inc.
Texaco, Inc.
Touche Ross & Co.
*Tribune Publishing Company
UNICO Properties, Inc.
Union Oil Company
University Book Store
Washington Jockey Club
Weisfield's Jewelers, Inc.
Westmor Partnership
Wright Runstad & Company
Xerox Corporation
Arthur Young & Company
Zetec, Inc.
Anonymous (1)

CCA MEMBERS \$500+

Ackerley Communications, Inc.
Alcoa Foundation
*The Alpac Corporation of Tacoma
ASKO Processing, Inc.
Baugh Construction Company
Bonanza Stores, Inc.
Ben Bridge Jeweler, Inc.
Canadian Imperial Bank of Commerce
*CHG International
Citibank/Citicorp. (USA), Inc.
Consolidated Dairy Products (Darigold)
The Craftsman Press, Inc.
Crescent Manufacturing Company
*Water W. Cribbins Co.
*Dean Witter (Tacoma)
Deluxe Check Printers
*Ernst & Whinney (Tacoma)
Ewing & Clark, Inc.
Exxon Company, U.S.A., Inc.
Family Life Insurance Company
Foss Launch & Tug Company
Gaco Western, Inc.
*Gerrish Bearing & Industrial
Supplies, Inc.
GM Nameplate, Inc.
*The Harris Architects
*The Journal-American
Kawaguchi Travel Service
Keeg's, Inc.
*Kentucky Fried Chicken of Tacoma, Inc.
Kidder Peabody & Company, Inc.
K & L Distributors, Inc.
The Koll Company
Lamson Products Company
Lanier Business Products, Inc.
Lane Powell Moss & Miller
Lease Crutcher Construction Company
Lennon Packing Co., - A Division
of Levinson Enterprises
Litler, Inc.
Marsh & McLennan, Inc.
*J. M. Martinac Shipbuilding
Corporation
The McKinley Architects
Milliman & Robertson, Inc.
Moss Adams & Company (Seattle)
The NBBJ Group
Nicholson Manufacturing Company
E.A. Nord Foundation
Northwest Envelope Company
Northwest Protective Service, Inc.
Northwestern Glass,
an Indian Head Company
Olympic Prefabricators, Inc.
Osberg Construction Company
Pacific Coca Cola Bottling Company
Pacific Northern Oil Corporation
Pacific Propeller, Inc.
Pentagram Services Corporation
Pigott Enterprises, Inc.
Piper Jaffray & Hopwood, Inc.
Pope & Talbot, Inc.
Preston Thorgrimson Ellis & Holman
Pryde Corporation
QFC/Quality Food Centers
Rockcor, Inc.
Rottler Manufacturing Co.
Savings Bank of Puget Sound
*Schwarz, Shera & Associates
Sea-Land Service, Inc.
Seattle Mortgage Company
Seattle Sheraton Hotel
Shell Companies Foundation, Inc.
Skyway Luggage Company

The George Sollitt Construction
Company
Space Needle Corporation
Stusser Electric Company
John F. Sullivan Company
*TAM Engineering Corporation
Ticor Title Insurance
TRA
United Bank, A Savings Bank
The Warwick Hotel
Washington Mutual Savings Bank
Western Automation Corporation
Winsome Industries, Inc.

CCA MEMBERS (less than \$500)

Abaxi Printing Company
*ABC Printers
Aircraft Standards, Inc.
*Allens Jewelers, Inc.
*The American Art Company
*American Plywood Association
*American Savings Bank
*ASARCO, Inc.
Asher Camuso & Gibbs, Inc.
Athletic Supply Company
The Austin Company
Ballard Sheet Metal Works, Inc.
*Ballew's Welding & Trailer, Inc.
*Bank & Office Interiors, Inc.
*Bank of Tacoma
*Barbeque Pete's, Inc.
*William E. Baxter
Belshaw Brothers, Inc.
Bemis Company, Inc.
B & J Industrial Supply Co.
Burnstead-Woolford Company
*Cammarano Bros., Inc.
Camp Lewis Tent & Awning Company
Canteen Service, Inc.
*Cascade Printing Company
Century Hardwood Co.
Clark Nuber & Co.
Coldwell Banker Commercial
Real Estate Services
Compton Lumber Company
Cone-Heiden
*Container Corporation of America
Continental Industries, Inc.
Corcoran Consulting Group
Crissey, Inc.
*Crown Pacific Corporation
Dinner & Klein, Inc.
Dow Chemical, U.S.A.
*William Drury Company, Inc.
*Dwyer Pemberton & Coulson
*Eagle Paper Box Company
Efficiency, Inc.
Fidelity Northwest, Inc.
Flightcraft, Inc.
Doug Fox Travel Service
Frayn Printing Company
*Gensco Inc.
*Bill Gill Lincoln Mercury, Inc.
John Graham & Company
Grange Insurance Association
*Great Northwest Foundation
*Mrs. Wm. R. Gregory
Herfy's Corporation
*Heritage Group, Ltd.
*High Life Helicopters, Incorporated
H.M. & Company, Inc. P.S.
The Hoge Building
Brantley Holt Jr., M.D.
Home Owners Club
*Hygrade Food Products Corporation

Ideal Basic Industries
*InterAcc
Jafco, Inc.
*Johnson-Cox Company, Inc.
Ernest A. Jonson Company
*G.E. Karlen
Kenworth Northwest, Inc.
*Knight Vale & Gregory, Inc.
Kraft Smith, Inc.
Lang Manufacturing Co.
Laventhol & Horwath
Leber, Inc.
*Le Roy Jewelers
*Pete Lovely Volkswagon, Inc.
The Lucks Company
MacPherson's, Inc.
Malarkey Asphalt Company
Morel Foundry Corporation
Moss Adams (Seattle)
*Murray Pacific Corporation
Music-Vend Distributing Company
National Fruit Canning Company
Nelson Iron Works, Inc.
*Nichols Trucking Co.
*North Pacific Bank
North Star Casteel Products, Inc.
Northwest Associates of
Connecticut Mutual Life
*Occidental Chemical Corporation
Olympic Stone Company
Pacific Coast Hemphill Oil Company
Pacific Fabrics Corporation
Pacific Trail, Inc.
Paris American Corporation
*Pennwalt Corporation
*Professional Maintenance Co., Inc.
PSF Industries, Inc.
Rainier Ice & Cold Storage Company
*Rasmussen & Hobbs Architects, AIA
Jay Rockey Public Relations, Inc.
*Roman Meal Company
Rosellini's Four-10 Company, Inc.
*Frank Russell Company
Ryan Instruments, Inc.
*Savage Industries, Inc.
*Sebastian's Steak & Seafood Restaurant
*Selden's Furniture & Carpet
Shannon & Wilson Geotechnical
Consultants
Walter J. Shields, CLU
Shultz Distributing Inc.
*Joseph Simon & Sons, Inc.
The Slope Indicator Company, Inc.
*Standard Paper Company
*Stork Associates, P.S., Inc.
*Thompson Krilich & LaPorte
*Thomson Travel, Inc.
*Tisdale Construction Co., Inc.
Todd Pacific Shipyards Corporation
*Tolotmo, Inc.
*Totem Electric of Tacoma, Inc.
Trident Imports
*Union Bank
United Graphics, Inc.
The Vance Corporation
Vaupell Industrial Plastics, Inc.
Western Alaska Fisheries, Inc.
*Western Clinic
*Western Community Bank
*Western Furnaces, Inc.
Wilbur-Ellis Company
*Woodworth & Company, Inc.
Ye Olde Curiosity Shop, Inc.
Anonymous (2)

†Includes both unrestricted and designated grants

*Contribution through the Tacoma/Pierce County Campaign