

A CONTEMPORARY THEATRE
EDITION

ARTS

L I N E

Volume II, No. 1

May, 1984



WILLIAM H. H. H. H.

A Contemporary Theatre

Gregory A. Falls
Producing Director

Phil Schermer
Producing Manager

Susan Trapnell Moritz
Administrative Manager

presents

Amadeus

by Peter Shaffer

May 3-26, 1984

Director Jeff Steitzer
Set Designer Shelley Henze Schermer
Costume Designer Sarah Nash Gates
Lighting Designer Phil Schermer
Sound Designer Lindsay Smith
Stage Manager Bonita M. Ernst

THE CAST

Antonio Salieri	John Gilbert
The "Venticelli"	James W. Monitor, David Pichette
Salieri's Valet	R. A. Farrell
Joseph II, Emperor of Austria	Peter Silbert
Johann Kilian von Strack	Jerry Harper
Count Orsini-Rosenberg	Frank Borgman
Baron van Swieten	Rick Tutor
Giuseppe Bonno	Larry Paulsen
Leopold, father of Mozart	Rod Pilloud
Teresa Salieri, wife of Salieri	Jeanne Paulsen
Katherina Cavalieri, Salieri's Pupil	Helene McCardle
Constanze Weber, wife of Mozart	Ki Gottberg
Salieri's Cook/Baroness	Gwynne Rhynedance
Wolfgang Amadeus Mozart	Brian Hargrove
Majordomo	Kevin C. Loomis
Young Mozart	Joshua Gillow
Citizens of Vienna/Servants/Courtiers	Rex E. Allen, R. A. Farrell, Jerry Harper, Kevin C. Loomis, David H. MacIntyre, Brian Martin, Helene McCardle, Jeanne Paulsen, Larry Paulsen, Rod Pilloud, Gwynne Rhynedance

THE PLACE: Vienna

THE TIME: November 1823, and, in recall, the decade 1781-1791

There will be one intermission.

Understudies never substitute for listed players unless a specific announcement is made at the time of the performance. Please check the Houseboard for any program changes.

Amadeus is presented by special arrangement with Samuel French, Inc. The first production of *Amadeus* was presented in London by the National Theatre of Great Britain on November 2, 1979. This production is made possible, in part, by The Seattle Arts Commission, City of Seattle, and by the Washington State and King County Arts Commissions. ACT also gratefully acknowledges support from the National Endowment for the Arts in Washington, D.C., a Federal agency, and from the Corporate Council for the Arts (CCA).

WHO'S WHO

REX E. ALLEN (*Citizen*) is making his first appearance at ACT. At Seattle Children's Theatre/Poncho his many credits range from Stephano in *The Tempest* and Antipholus of Syracuse in *The Comedy of Errors* to Baron de Fox in *Pinocchio* and Bob in *The Best Christmas Pageant Ever*. Rex also appeared in *Home Again*, *Kathleen* at Pioneer

Square Theater, *Small Craft Warnings* at Skid Road Theatre, and *Othello* at Intiman. He has performed with The Oregon Shakespearean Festival and other resident theatres, and has directed for several. With his M.A. in directing from Baylor University, Rex has staged such productions as *The Me Nobody Knows* for Skid Road Theatre, *Seascape* and *Ashes* for the Ashland festival's Black Swan Project, and *Loveliest Afternoon of the Year* for the 1983 Directors Festival at the New City Theatre.

FRANK BORGMAN (*Count Orsini-Rosenberg*) has appeared in over 200 productions in his 35 years of professional acting, including work on Broadway and throughout the country. His favorite roles of the past few years have been H. C. Curry in *The Rainmaker*, Arvide Abernathy in *Guys and Dolls*, and whatever he is playing at the moment. His career is highlighted by his Shakespearean work. In 1970 he appeared in the New York Shakespeare Festival's Central Park production of *Wars of the Roses*, appearing in *Henry VI, Parts 1, 2 and 3* and in *Richard III*, climaxed by a marathon presentation of all four plays in one night.

R. A. FARRELL (*Salieri's Valet*) was last seen on our mainstage as Bob Cratchit in *A Christmas Carol* in 1982. That year he also played the Old Man of Atrous and Old Peleus in *The Greeks*, Chuck Hart in *Fridays*, and Oliver in *Da*. Prior to that his many appearances at ACT include *Custer*, *Loose Ends*, *Whose Life Is It Anyway?*, *Fanshen*, and

previous productions of *A Christmas Carol* as Marley's Ghost and Old Joe. R. A. toured twice with The Young ACT Company and has worked with The Seattle Rep, Intiman, The Empty Space, Tacoma Actors Guild and The Oregon Shakespearean Festival, as well

as with other resident theatres around the country.

JOHN GILBERT (*Antonio Salieri*) has appeared on our mainstage numerous times since his 1966 performance in *In White America*. For eight years he has played Scrooge in *A Christmas Carol* here. His ACT credits also include *Fridays*, *The Caucasian Chalk Circle*, *In Celebration*, *Luv*, and *A Streetcar Named Desire*. He

studied at the University of Washington and first worked with Greg Falls in *The Zoo Story* at the Showboat Theatre. John's substantial work as a member of the Intiman Theatre Company includes Sherlock Holmes in *The Crucifer of Blood* and his one-person presentation of *Damien*, as well as *The Seagull*, *A Dream Play*, *In the Jungle of Cities*, and many more. He also has worked with The Seattle Rep, The Empty Space, Poncho Theatre, The Montana Rep, the American Theatre Company in Portland, and other resident theatres.

KI GOTTBORG (*Constanze Weber*) has just completed the run of *Broadway* at The Empty Space Theatre, in which she played Ruby. In the past two years Ki has appeared at The Seattle Rep in *My Uncle Sam*, with the Oregon Contemporary Theatre in *Loot* and *Don Juan Comes Back from the War*, and in Intiman Theatre's staged reading of *Ironheart*.

Last June Ki finished her M.F.A. at the University of Washington. Some favorite roles there were Marianne in *The Miser* and Natasha in *Three Sisters*. Ki's voice can be heard often in national radio and television commercials.

BRIAN HARGROVE (*Wolfgang Amadeus Mozart*) is making his first appearance in the Northwest. He trained at The Juilliard School in New York, with performances as Dromio in *The Comedy of Errors* and Valentine in *You Never Can Tell*, among many others. Off-Broadway he played Fedotik in *Three Sisters* with Manhattan Theatre Club and Sky in

Vieux Carré at the WPA Theatre, plus Georg Von Rauch in *How It All Began* with the New York Shakespeare Festival. His other New York and resident theatre credits range from Jim Noblit in *Never Say Die* at the Classic Theatre to several roles with the Indiana Rep and the Weathervane Summer Theatre in

New Hampshire. He also has appeared on NBC's "Another World" as Howard Ecker and ABC's "One Life to Live" as Mike Seaton.

JERRY HARPER (*Johann Kilian von Strack*) played Dr. Emerson in our 1981 mainstage production of *Whose Life Is It Anyway?* His work on stage, in scores of roles, has taken him from Chicago's Goodman Theatre and Candlelight Dinner Theatre to the Actors Workshop in San Francisco, and from Nassau to the Black Hills

Playhouse in South Dakota, plus several years of performing in the Los Angeles area. Among his extensive television credits are "M*A*S*H," "MacMillan and Wife," "Bonanza," "Mod Squad," "Judd for the Defense," and dozens of others. Jerry's film work includes *The Stone Killers*, *Once Upon A Dead Man*, *Sam Hill*, and *Free To Be*. This past winter Jerry did *Wings* and *The Philadelphia Story* at the Alaska Rep, and most recently *Cardinal Tosca* at TAG.

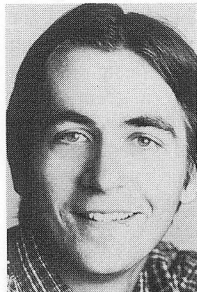
KEVIN C. LOOMIS (*Majordomo*) made his ACT debut last season when he stepped into the cast of *Cloud 9*. Most recently he portrayed Porky in the Empty Space's production of *Broadway*. Kevin holds a B.F.A. from the University of Washington's Professional Actor Training Program, where he played Spettig in *Charley's Aunt* (directed by Jeff Steitzer), Shawn Keogh in *Playboy of the Western World*, and Joel in *All the Way Home*. He also has worked with the Illinois Shakespeare Festival, playing Friar Laurence in *Romeo and Juliet* and Falstaff in *Merry Wives of Windsor*, and with the Oregon Shakespearean Festival, where his work included their 1981 tour and productions of *Two Gentlemen of Verona*, *Othello*, and *Henry IV, Part 1*. In addition to commercials, his television work includes "Cagney and Lacey" and "General Hospital."

DAVID H. MACINTYRE (*Citizen*) also comes to ACT from The Empty Space's production of *Broadway*, and this is his first appearance here. Locally he was seen as Henry in *The Lion in Winter*, Renfrew in *Kid Champion*, Dan Slack in *Hit Parade*, and Whitcomb in The Seattle Rep's in-process presentation of *The Ballad of Soapy Smith*. For two years

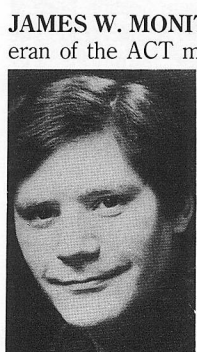
David was an artist-in-residence with the Pacific Conservatory of the Performing Arts in Santa Maria, California, where his numer-

ous roles included Moses in *The School for Scandal*, Pope Julius II in the world premiere of *Michelangelo*, the Captain in *Anything Goes*, and many more. He also spent two years as production manager and director for the Skid Road Theatre. He performed for many years with the Montana Rep and Shakespeare in the Park, in addition to the Utah Shakespeare Festival.

BRIAN MARTIN (*Citizen*) made his ACT debut in our 1983 production of *A Christmas Carol*, playing Bob Cratchit. He holds an M.F.A. from the University of Minnesota and has been working with several Northwest theatres. His work at The Seattle Rep includes the roles of J. D. Stewart and Frenchie Villiers in *The Ballad of Soapy Smith* (and in its previous workshop presentation by The Rep) and Doalty in Brian Friel's *Translations*. He has been seen many times at Intiman, in *Shadow of a Gunman*, *The Crucifer of Blood*, and *In the Jungle of Cities*, among others. At The Empty Space he appeared in *Tartuffe*.



HELENE McCARDLE (*Katherina Cava-lieri*) trained in the Professional Actor Training Program at the University of Washington and holds her B.F.A. in acting from Ithaca College. She is best known to local audiences from her work with The Group, including her performance as Aggie and Clodia in The Group's premiere presentation of *The Last Carnival*. She has been seen as Masha/Olga in *Three Sisters*, Nurse Ratched in *One Flew Over the Cuckoo's Nest*, Elise in *The Miser*, and Margaret Lord in *The Philadelphia Story*. Helene is making her first appearance at ACT in this production, although she understudied our 1983 production of Caryl Churchill's *Cloud 9*.



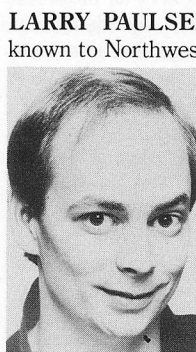
JAMES W. MONITOR (*Venticello*) is a veteran of the ACT mainstage and The Young ACT Company. He was seen here most recently in the YAC touring production, *The Pushcart War*, for which he was Assistant Director as well. Prior to that he appeared in the company's 1978/79 production of *The Odyssey*. On our mainstage he was seen in *Scapino*, *A Christmas Carol*, *Anything Goes*, *Streamers*, and *Henry IV, Part 1*. His work with The Empty Space has included productions of *Butley*, *Knuckle*, *Pulse of New York*, and *School for Clowns* (which he co-directed). Among his other stage credits are *Episode 26*

at the Off-Broadway Queens Theatre in the Park, *A Christmas Carol* at The Milwaukee Rep, and several roles Off Off Broadway in productions of *A Night at the Fights*, *Smash Hits*, *The Game Show*, and more.

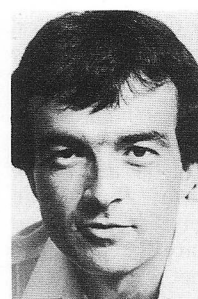
JEANNE PAULSEN (*Teresa Salieri*) played Ellen, Mrs. Saunders, and Lin in *Cloud 9* here last season. Since then she has performed with the San Jose Repertory Theatre and as Mrs. Cratchit in The Milwaukee Rep's *A Christmas Carol*. Jeanne was a member of The Oregon Shakespearean Festival company for three years, playing Irene Molloy in *The Matchmaker*, Kitty Carberry in *Spokesong*, Amy in *Wings*, Margaret Morley in Joanna Glass's *Artichoke*, Julia in *Two Gentlemen of Verona*, Maria in *Twelfth Night*, and Lady Percy in *Henry IV, Part 1*. She also appeared in *Wild Oats*, *Richard II*, *Juno and the Paycock*, *Coriolanus*, and *Inherit the Wind*. At the Denver Center Theatre Company she performed in *Waiting for Lefty*, and she has also worked with the Pacific Conservatory of the Performing Arts in California.



LARRY PAULSEN (*Giuseppe Bonno*) is known to Northwest audiences from his performances as Tom Wingfield in *The Glass Menagerie* and Neal Tilden in *The 1940's Radio Hour* at Tacoma Actors Guild and from several years with The Oregon Shakespearean Festival. He performed with the festival in such roles as Sir Andrew Aguecheek in *Twelfth Night*, Johnny Boyle in *Juno and the Paycock*, Farmer Banks in *Wild Oats*, Dromio of Ephesus in *The Comedy of Errors*, Barnaby Tucker in *The Matchmaker*, and Dr. Eastland in *The Father*. He taught with the festival's School Visit Program 1980-1982. Larry also spent two seasons with the Pacific Conservatory of the Performing Arts and has performed with the Denver Center Theatre Company in *Waiting for Lefty*. He has a B.A. in speech and theatre from the University of Northern Iowa, with an M.F.A. in acting from the University of California at San Diego.



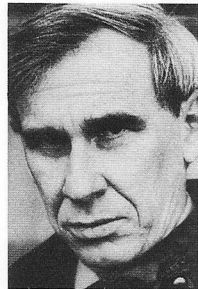
DAVID PICHETTE (*Venticello*) was most recently seen as Cardinal Tosca in *The Incred-*



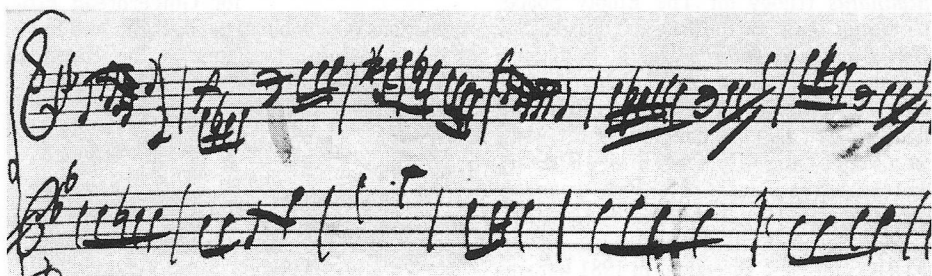
ible Murder of Cardinal Tosca at Tacoma Actors Guild. In 1982 he shared the role of Scrooge here in *A Christmas Carol*, following his mainstage performance as Odysseus in *The Greeks*. Prior to moving to Seattle, David lived in New York City for six

years and performed in numerous Off-Off-Broadway productions, in such roles as Bassanio in *The Merchant of Venice*, Davies in *The Caretaker*, and George in *Of Mice and Men*. At the Virginia Museum Theatre he was Dimple in *The Contrast* and Moritz in *Spring's Awakening*. For two years he worked with the Children's Theatre Company of Minneapolis, and he spent two winters touring with the Montana Rep as Bluntschli in *Arms and the Man*, Geoffrey in *Lion in Winter*, Elyot in *Private Lives*, and Leo in *Chapter Two*, among others.

ROD PILLOUD (*Leopold*) played several roles in our two-part 1982 presentation of *The Greeks*, and prior to that performed here in *Getting Out*, *Custer*, *Catholics*, *Of Mice and Men*, and *The Resistible Rise of Arturo Ui*. He also has worked with The Seattle Rep, Tacoma Actors Guild, and The Empty Space Theatre. Rod's film credits include *Frances*, ABC's *Divorce Wars*, *The Winds of War*, and *The Prodigal*.



GWYNNE RHYNEDANCE (*Salieri's Cook/Baroness*) has appeared with several Northwest theatres, but this is her first time at ACT. She studied at the London Academy of Music and Dramatic Arts and for two years at the Circle in the Square Professional Workshop in New York. Among her roles overseas are Snoopy in *You're A Good Man, Charlie Brown* at the Edinburgh Festival and Phoebe in the British American Academy's *As You Like It*. Locally she was seen as Rachel Brown in *Inherit the Wind* at the Brass Ring

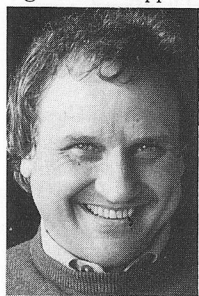


Theatre, Bluebird Girl in *Carnival* at Skid Road Theatre, and Beatrice in *Much Ado About Nothing* with CTC.

PETER SILBERT (*Joseph II*) makes his ACT debut in this production. He has been seen in this area at The Seattle Rep, The Empty Space, Pioneer Square Theater, the Comet Tavern Actors Guild, the New City Theatre and, for five seasons, with Intiman Theatre Company. Peter has appeared Off-Broadway and at

such resident theatres as the Actors Theatre of Louisville, Virginia Museum Theatre, the Oregon and Utah Shakespearean Festivals, and most recently in his second season with the Milwaukee Repertory Theatre, where he is a member of the resident acting company.

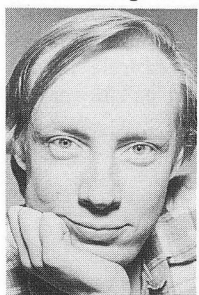
RICK TUTOR (*Baron van Swieten*) is making his fourth appearance at ACT. Last season



he was seen here in several roles in *The Dining Room*, and prior to that as Desmond Drumm in *Da* and Brother Martin in our 1980 world premiere of *Catholics*. Rick is the Founding Artistic Director of Tacoma Actors Guild, where he has directed or acted in

a score of productions in TAG's five-year history. Rick holds a Ph.D. in theatre from Wayne State University, where he was an acting fellow with the Hilberry Repertory Company. He also has participated in more than three dozen productions over the past several years at the University of Puget Sound's Inside Theatre.

JEFF STEITZER (*Director*) returns to ACT after directing last season's *Cloud 9*, which he



will stage again at the Alliance Theatre in Atlanta along with a revised production of *The Fabulous Sateens Spill the Beans*. Since 1975 he has directed more than 35 productions in Seattle, including *Knuckle, Gossip, Filthy Rich, The Paranormal Review*, and the *Il-*

luminatus trilogy for The Empty Space; *Guys and Dolls* for the Palace Theatre; *Bay City Blues* and *Father's Day* at Bathhouse Theatre; and *Pinocchio* and *The Best Christmas Pageant Ever* for Seattle Children's Theatre. Jeff also has directed for the Montana Rep, Chicago's Wisdom Bridge Theatre, and the Actors Theatre of St. Paul, where his productions of *How the Other Half Loves* and *Tartuffe* won Twin Cities Drama Critics' KUDOS for Best Direction. In 1981 Jeff was an NEA Directing Fellow at the Guthrie

Theatre and he recently was named an NEA Artistic Associate to the Actors Theatre of St. Paul, where he has just staged David Mamet's *The Woods*.

PETER SHAFFER (*Playwright*) came to prominence in 1958 with his first play, *Five Finger Exercise*, which won both the London *Evening Standard* Drama Award and the New York Drama Critics Circle Award. ACT introduced his work to Seattle in its 1965, inaugural season with *Private Ear/Public Eye* and since then has presented *Black Comedy* and *Royal Hunt of the Sun*. Peter Shaffer was born in Liverpool in 1926. He was educated at St. Paul's School, London, and Trinity College, Cambridge. Before finding his career in the theatre, he worked at such diverse jobs as coal miner, assistant in the New York Public Library, and editor for the symphonic department of an English music publisher. He was music critic for the magazine *Time and Tide* as well. He now resides in New York.

SHELLEY HENZE SCHERMER (*Set Designer*) created the sets and costumes for the

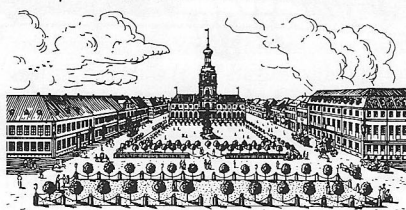


1983/84 Young ACT Company production *The Persian Princess*. She has been associated with ACT since 1971 as property master and designer. Among her credits here are *The Greeks, Man and Superman, Custer, Catholics, The Dresser*, and the original version of *A Christmas Carol*. For The Young ACT Company she designed sets and masks for *The Odyssey* and *A Wrinkle In Time*, masks for *The Pushcart War*, and the entire production of *Ali Baba and the Forty Thieves*. Shelley also has designed for The Empty Space, the Floating Theatre Company, The Group, the Palace Theatre, The Seattle Rep's MOB, and Bathhouse Theatre, including their current production of *Twelfth Night*.

SARAH NASH GATES (*Costume Designer*) makes her ACT debut with this production.

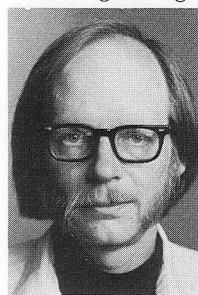


Prior to joining the faculty of the U.W. School of Drama in September of last year, she designed costumes for *Showboat* at the Wolftrap Foundation, *Tales of Hoffmann* for the Aspen Music Festival, and tours of *Showboat* and *The Gin Game* for Gingerbread Productions (Columbia Artists). Sarah was Resident Costume Designer at the Hartman Theatre Company for their 1978/79 season.



She also assisted Raul Pene DuBois on the bus-and-truck tour of *Sugar Babies*, served as supervisor of costuming for the Ringling Brothers, Barnum & Bailey Circus Clown College, and designed the Production Clown Wardrobe for the 108th edition of *The Greatest Show on Earth*. She is a graduate of Boston University, and her work was selected for the 1982 and 1984 USITT Juried Sceneography Expositions.

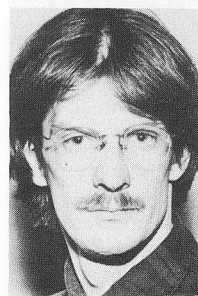
PHIL SCHERMER (*Lighting Designer/Producing Manager*) has been with ACT for



about 18 years, during which he designed lighting for a great many productions, including *Cloud 9* last season. Among his other lighting credits here are *The Greeks, Loose Ends, Custer, Catholics, Wings, Fanshen, The Club, The Water Engine, A Christmas*

Carol, The Shadow Box, and more. At The Empty Space he designed lighting for *American Buffalo, A Prayer For My Daughter, Heat*, and *Dusa, Fish, Stas and Vi*. He also has designed lighting for The Seattle Rep and its 2nd Stage and sets for ACT, the 2nd Stage, and The Empty Space.

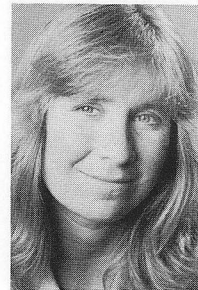
LINDSAY SMITH (*Sound Designer*) moved to Seattle from Nashville, Tennessee, two



years ago and has been designing sound and lighting at several local theatres. This is his ACT debut. At the New City Theatre he created the sound for *The Unseen Hand* and *Coming Attractions*. His work at Seattle Children's Theatre included the sound design for

Mother Hicks and *Great Expectations* and the lighting for *Families*. In addition to his design work, Lindsay is the audio-visual technician at the Seattle Art Museum.

BONITA M. ERNST (*Stage Manager*) is marking her third mainstage season here at

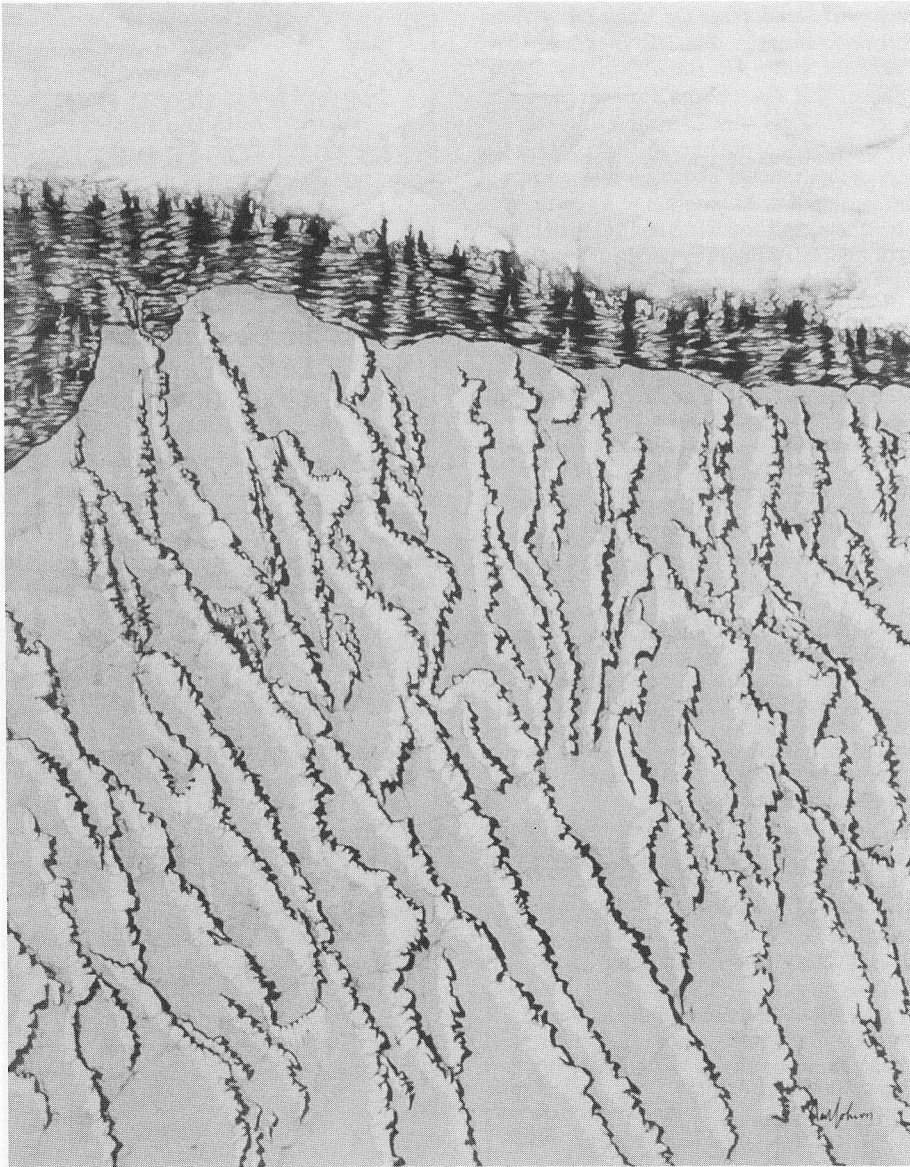


ACT. Last year she stage managed *The Dresser, Crimes of the Heart* and *Cloud 9*, and the year before, *Waiting for the Parade, Da* and *The Greeks*, as well as the last two productions of *A Christmas Carol*. She is an M.F.A. graduate of California Institute of the Arts and

has stage managed in theatres up and down the West Coast. Among the theatres she has worked with are The Seattle Rep, The Empty Space, the Mark Taper Forum and Westwood Playhouse in Los Angeles, the Globe Theatre in Hollywood, and the Old Creamery Theatre in Iowa.

(continued on page 18)

Art in the Lobby



Mocha Cliffs, batik by Nan Johnson

In 1984 ACT once again is providing space in its upper lobby to individual Northwest artists. ACT feels this gives our audience a chance to view new works, enhances their theatre experience, and affords ACT the opportunity to be of public service to the greater arts community. Sales of Art in the Lobby also benefit the theatre.

During the run of *Amadeus*, our Art in the Lobby curator, **Pamela Powers**, presents the works of Seattle artist **Nan Johnson**.

"There are many beautiful and varied environments in this state, and I try to communicate their images in my work. I earned my undergraduate degree in Environmental Planning and spent seven years working as a planner and administrator in shoreline and water resource management. Those experiences taught me what a precious resource natural beauty is. I am a native of Washington, too, and think that has been a major reason I draw my images from the natural surroundings.

"I enjoy watching the movement of clouds, the interaction of clouds and sunlight on mountains, and the effect of light and shadow on flowers. Through my art, I try to share what I see in these.

"I work in the media of batik and wire mesh sculpture. Usually I name my landscapes and cloudscape by the places that inspired them. The magnolias, for example, are from the University of Washington Arboretum; the iris from the flowers I grew myself.

"I have been working in batik since 1968. Most are done in the traditional wax-resist, submersion dye-bath method on silk and cotton. Newer works have combined painted and submersion methods with dyes, pigments, and waxes applied with brush and sponge. Wire mesh sculpture is a new medium for me. The wire mesh is bent and then painted with acrylics."

If you have any questions about our Art in the Lobby or wish to purchase art work on display, contact the House Manager or call the ACT office at 285-3220.

WHO'S WHO

(continued from page 16)

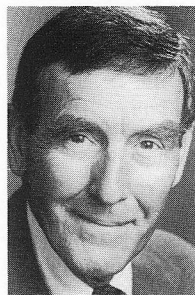
SUSAN TRAPNELL MORITZ (Administrative Manager) came to ACT from Dance



Theatre Seattle, where she was general manager for two years and prior to that educational director. Her work experience ranges from a stint in Paris as UNESCO bilingual aide to writing and editing positions in the Washington, D.C., area. She

worked with the National Urban League and also taught English to youngsters in Algeria. Ms. Moritz holds a B.A. in French from the University of North Carolina and has completed her M.A. coursework in dance education at George Washington University. She also attended the University of Lyons in France.

GREGORY A. FALLS (Producing Director) is the founder of A Contemporary Theatre and The Young ACT Company. He has directed more than 50 productions here, including *The Greeks*, *Catholics*, *Getting Out*, *Fanshen*, *Henry IV Part 1*, and *Ballymurphy*. He also created five original children's theater revues and three Christmas



shows, plus a scripted version of *The Odyssey* with playwright Kurt Beattie and original scripts of *Aladdin and the Magic Lamp*, *The Forgotten Door*, *A Wrinkle In Time*, *The Pushcart War*, *Ali Baba and the Forty Thieves*, and *The Persian Princess*. For ten years Mr. Falls was Executive Director of the U.W. School of Drama. He is past president of the National Theatre Conference and the Washington Association of Theatre Artists, a founding board member of the United Arts Council of Puget Sound, and founder of the Champlain Shakespeare Festival.

Next at ACT

Top Girls by Caryl Churchill
June 7 - 30

A modern businesswoman celebrates her promotion to head of a London employment agency by throwing a party. Her unusual guest list includes famous and successful "top girls" from history and mythology.

Playwright Caryl Churchill, whose *Cloud 9* was seen here last season, proves once again that she is one of the boldest, most imaginative writers in theatre today.

Guest director Sharon Ott, who staged *Educating Rita* on our mainstage in '83, will direct *Top Girls*. She has been Resident Director at The Milwaukee Rep for the past five years and has been named Artistic Director of Berkeley Repertory Theatre, where she will assume her new duties this fall.

Not a subscriber?

Turn in your ticket to *Amadeus* and our Box Office will credit the purchase price to your 1984 ACT subscription. You'll get at least one play for free!

ArtsLine
is
more than just
a
theater program.

ArtsLine
is
Seattle's very own
forum for the arts.

For more information call
Lenore Waldron
(206) 325-4400

THIRD SEASON

July 2 - 20, 1984



Toby Saks, Music Director

9 concerts... 20 nationally-
acclaimed musicians...
pre-concert picnics.

For a truly unforgettable summer,
attend the

1984 SEATTLE CHAMBER MUSIC
FESTIVAL

For information and tickets call
282-1807

Co-sponsored by

Classic
KING FM 98.1

Seattle Post-Intelligencer



POST-PLAY DISCUSSION

A free, informal discussion of *Amadeus* will take place in the theatre on Sunday, May 13th, following the 2:30 p.m. matinee, at approximately 4:45 p.m. You and your guests are invited to attend and participate, along with members of the company.

THANK YOU!

ACT wishes to thank the following for their assistance:

Daniel J. Cole
Intiman Theatre Company
The Seattle Rep
Seattle Opera
Seattle University
University of Washington

Throughout this opening production of ACT's 20th Mainstage Season, we salute the nearly 250 individuals who have consistently supported the theatre with annual contributions in *at least* ten of the past twenty years.

Such loyal generosity and commitment to ACT provides the foundation of contributed support vital to our annual operations, allowing us to balance our budget and to continue producing high-quality professional theatre.

We do not have enough space in this program to list all these honorees, so we ask you to see our dedication display in the main lobby.

If you are not already a member of this cherished group, we cordially invite you to join! If you have any questions, call our Development Office at 285-3220.

ACT Subscribers & Contributors!

Copies of ACT Theatre's 1983 Annual Report are available to you free of charge in the ACT Administrative and Box Offices.

A Contemporary Theatre

P.O. Box 19400, Seattle, WA 98109

Located at 1st Ave. W. & W. Roy St.

Box Office: (206) 285-5110

Administrative Offices: (206) 285-3220

Gregory A. Falls, Producing Director

ADMINISTRATIVE STAFF

Susan Trappnell Moritz,
Administrative Manager

Administrative Intern **Leontine Gilyard**
Administrative Secretary **Robert Haynes**
Audience Services Manager **Janet Upjohn**
Bookkeeper **Bertha Sumner**
Development Director **Ann-Marie Spata**
Development Assistant **Janice Dilworth**
Mail Room Supervisor **Robert Rose**
Marketing Director **Julie Anderson**
Photographer **Chris Bennion**
Public Relations Director . **Michael Eagan, Jr.**
Public Relations Interns **Kelli Curtis,**
Kim Jorgensen

Receptionist **Jennie Sande**
Box Office Manager **Chris Coy**
Box Office Staff **Cameron Dokey,**
Jeannie Falls,
Sue Schindele

House Manager **Nancy Tennenhouse**
Assistant House Manager **Kasey Meier**
House Assistant **Stuart Ostfeld**
Custodian **Irene Blackford**
Concessions Managers **Brady Smith,**
Eden Stewart

Concessions Staff **Kevin Cavanah,**
Tracy Sisley

ARTISTIC/PRODUCTION STAFF

Phil Schermer,
Producing Manager

Assistant Artistic Director/
Company Manager **Anne-Denise Ford**
Assistant Technical Director **Jody Briggs**
Music Coordinator **David Hunter Koch**
New Plays Manager **Barry Pritchard**
Stage Managers **Bonita M. Ernst,**
Joan Kennedy

Production Carpenter (IATSE #15)
Howard Neslen

Carpenters (IATSE #15) **Justin Gelle,**
Al Nelson

Scenic Painter **Mary Alyce White**
Shop Assistant **Renee D. Reilly**
Costume Shop Manager **Carolyn Keim**
Cutter **Constance Rinchiuso**
Stitchers **Jim Arsenault, Nancy Bayer,**
Jan Johnston

Accessories **Larry Tuller**
Wigs **Joyce Degenfelder**
Wardrobe Supervisor **Jan Johnston**
Wardrobe Crew **Dawn Douglas**
Production Assistants **Norbert Herriges,**
Sarah S. Mixson

Assistant Lighting Designer ... **Mary Schuster**
Properties **Nancy Provence, Kay Ray**

Foreign Language Consultants

Rich Hill
Rosa Maria Rossi

BOARD OF DIRECTORS

President

Aubrey Davis

Vice President

Richard C. Clotfelter

Vice President

Pamela Powers

Vice President

Marilyn Batt Dunn

Secretary

Walter Walkinshaw

Treasurer

Donald B. Paterson

Immediate Past President

Harry M. Strong

Sustaining Fund Chairman

David A. McLeod

Ellsworth C. Alvord, Jr., M.D.

John C. Ashton

Jane M. Baxter

Richard C. Clotfelter

Aubrey Davis

Marilyn Batt Dunn

Andrew Fallat

Gregory A. Falls

Carolyn H. Grinstein

David M. Hewitt

Sara Comings Hoppin

Anne J. Kenefick

Barbara Kirk

Mary Lou LaPierre

James B. C. Lockwood

Paul Maffeo

David A. McLeod

Cynthia Stroum Meagher

Jane H. Milholland

Dr. Charles Nolan

Douglas E. Norberg

Donald B. Paterson

Karen Portzer*

Pamela Powers

Katherine L. Raff

Charlotte H. Reed

Judith M. Runstad

Theiline Scheumann

Carrie Soderstrom

Harry M. Strong

William H. Taylor

Walter Walkinshaw

Kenneth Weiner

ADVISORY COUNCIL

Rosemary (Wade) Ballinger

P. Cameron DeVore

Jacquetta Blanchett Freeman

C. David Hughbanks

George Lhamon

Ray Moore

Nadine H. Murray

Brooks G. Ragen

Sam Rubinstein

George S. Schairer

Mrs. Walter E. Schoenfeld

Marvel Stewart

Samuel N. Stroum

Dr. Robert Willkens

David E. Wyman, Jr.

**ex officio*